



## 400-Ft. Wagon Hose Reel Cart

Owner's Manual



**WARNING:** Read and understand all instructions, warnings, and cautions before using this product. Failure to follow the instructions, warnings, and cautions may result in serious personal injury and/or property damage.

Item # 49461

**SAVE THESE INSTRUCTIONS**

Thank you very much for choosing a Strongway product!

For future reference, please complete the owner's record below:

Serial Number/LotDate Code: \_\_\_\_\_

Purchase Date: \_\_\_\_\_

Save the receipt, warranty, and this manual.

This 400 ft. hose reel cart is designed for certain applications only. The distributor cannot be responsible for issues arising from modification or use of this product in an application for which it was not designed. We strongly recommend that this product not be modified and/or used for any application other than that for which it was designed.

For technical questions, please call **1-800-222-5381**.

## Table of Contents

Intended Use.....	4
Technical Specifications .....	4
Specific Operation Warnings.....	6
Assembly Instructions.....	7
Before Each Use.....	11
Operating Instructions.....	11
After Each Use.....	11
Maintenance .....	11
Parts Diagram.....	12
Parts List.....	13
Troubleshooting.....	14
Replacement Parts.....	14
Limited Warranty.....	15

## Intended Use

This hose reel cart has a solid steel frame, long handle and flat-free tires for easy maneuverability. The cart, even with 400 feet of hose loaded, makes it easy for you to reach to anywhere in your yard.

## Technical Specifications

Capacity	400 feet (122 meters) of 5/8in. hose (not included)
Tires	Flat-free tires
Construction	Solid steel frame

### **▲ WARNING**

- The warnings, cautions, and instructions in this manual cannot cover all possible conditions or situations that could occur. Exercise common sense and caution when using this cart. Always be aware of the environment and ensure that the cart is used in a safe and responsible manner.
- DO NOT allow persons to assemble or operate the cart until they have read this manual and have developed a thorough understanding of how it works.
- Use the right tool for the job. DO NOT attempt to force small equipment to do the work of larger industrial equipment. There are certain applications for which this equipment was designed. It will do the job better and more safely at the capacity for which it was intended. DO NOT use this equipment for a purpose for which it was not intended.
- Industrial or commercial applications must follow OSHA requirements.

### **▲ WARNING**

This hose reel contains chemicals, including lead, known to the State of California to cause cancer and birth defects or other reproductive harm. Do not drink water from this hose. Wash hands after use.

## **⚠ WARNING**

### **WORK AREA SAFETY**

- Inspect the work area before each use. Keep the work area clean, dry, free of clutter, and well lit. Cluttered, wet, or dark work areas can result in injury.
- Do not allow the cart to come into contact with an electrical source. Contact will cause electrical shock.
- Keep children and bystanders away from the work area while operating the reel. Do not allow children to operate the reel.
- Be aware of all power lines, electrical circuits, water pipes, and other mechanical hazards in your work area. Some of these hazards may be hidden from your view and may cause personal injury and/or property damage if contacted.

### **PERSONAL SAFETY**

- Stay alert, watch what you are doing, and use common sense when operating the cart or reel. Do not use the cart or reel while tired or under the influence of medication or alcohol.
- Dress properly. Do not wear loose clothing, dangling objects, or jewelry. Keep hair, clothing, and gloves away from moving parts as they can be caught.
- Use ANSI-approved safety goggles or safety glasses with side shields, or when needed, a face shield. Use a dust mask in dusty work conditions. Also use non-skid safety shoes, hardhat, gloves, dust collection systems, and hearing protection when appropriate. This applies to all persons in the work area.
- Do not overreach. Keep proper footing and balance at all times.

## **⚠ CAUTION**

### **HOSE REEL CART USE AND CARE**

- Do not modify the hose reel cart. Unauthorized modification may impair function and/or safety and could affect the life of the cart.
- Do not force the hose reel. Hose reels do a better and safer job when used in the manner for which they are designed. Plan your work, and use the correct hose reel for the job.
- Check for damaged parts before each use. Carefully check that the cart and reel will operate properly and perform its intended function. Replace damaged or worn parts immediately. Never operate the cart and reel with a damaged part.
- Always turn the water off and open the nozzle before rewinding the hose.
- Always release the water pressure by leaving the hose nozzle open when not in use.
- Do not pull or jerk on the hose.
- Do not use the hose reel with any chemical or solid substance that will damage the hose.
- Freezing temperatures can damage the hose. Always disconnect the hose reel from the water supply and drain the water from the hose before freezing conditions.
- Use only accessories that are recommended by the manufacturer for use with the hose reel. Accessories that may be suitable for one size reel may create a risk of injury when used with a smaller size reel. Never use an accessory that has a lower operating pressure than the reel itself.
- Store the cart when it is not in use. Store it in a dry, secure place out of the reach of children. Inspect the cart and reel for good working condition prior to storage and before re-use.

## Specific Operation Warnings

### **⚠ WARNING**

- Ensure that reel is properly installed and in good working order before connecting input and output hoses
- Do not pull or jerk on hose.
- Do not use the hose reel with any chemical or solid substance that will damage the hose.
- Do not operate the cart or reel if any part is missing. Replace the missing part before operating. Failure to do so could result in a malfunction and serious personal injury.
- When unwinding the hose be aware of your surroundings. Ensure all persons and property are clear of the hose. Feet can easily get tangled in the hose and cause you to lose balance and fall.
- Do not drink from the hose.
- Only use the reel with residential water type sources. The reel is not manufactured for excessive water pressure.

## Assembly Instructions

1. See Figure 1. Attach the rear bracket axle (B) to the U-shape frame (A) using two M10 x 20mm screws (M). Then, attach the front axle (C) to the frame (A) using two M10 x 20mm Screws (M).

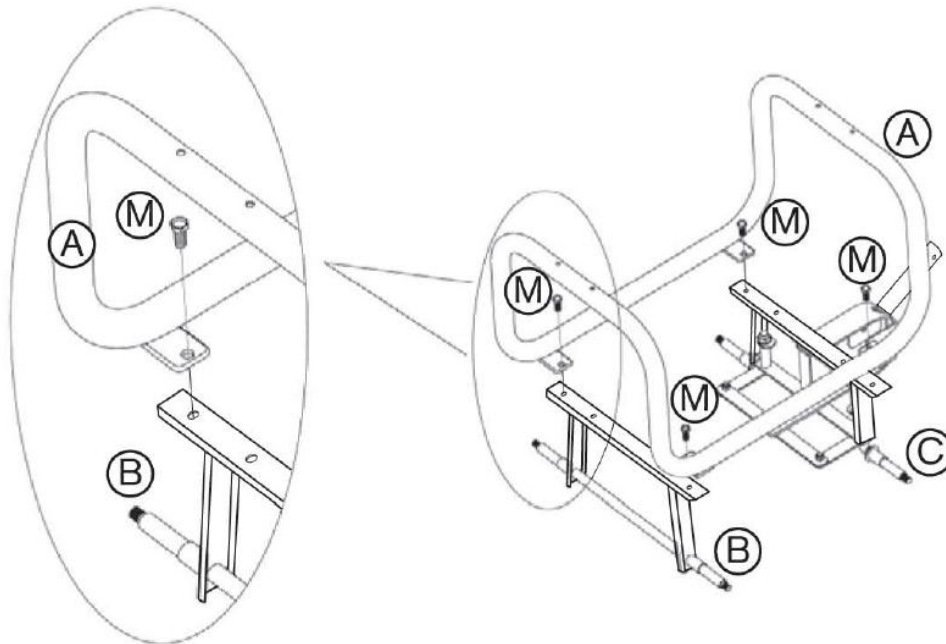


Figure 1

2. See Figure 2. Slide two flat-free tires (D) onto the front axle (C). Tighten with two 12mm lock nuts and washers (N). Next, slide two flat-free tires (D) onto the rear axle (B). Secure with one 16 washer (O) and one pin (P) on each side.

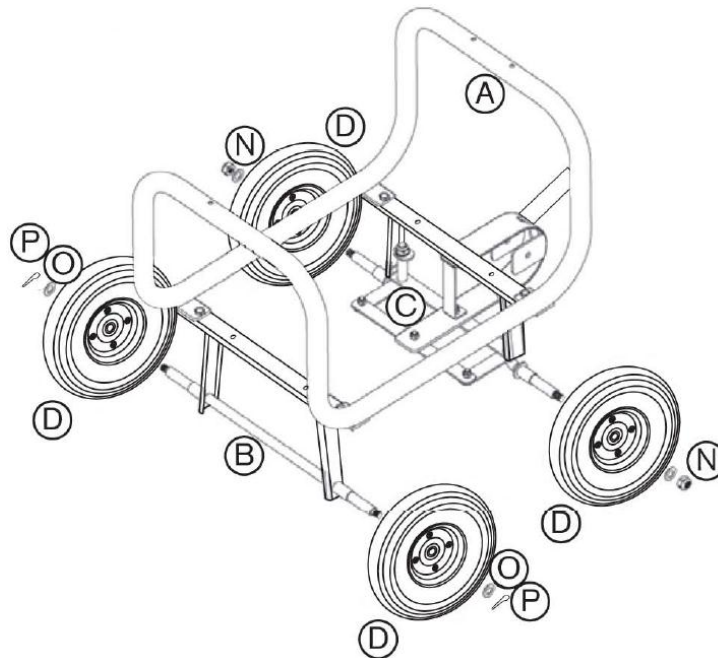


Figure 2

3. See Figure 3. Place the basket (I) on the top surface of the front axle (C) and rear axle (B) and secure with four M8 x 20mm screws and nuts (L).

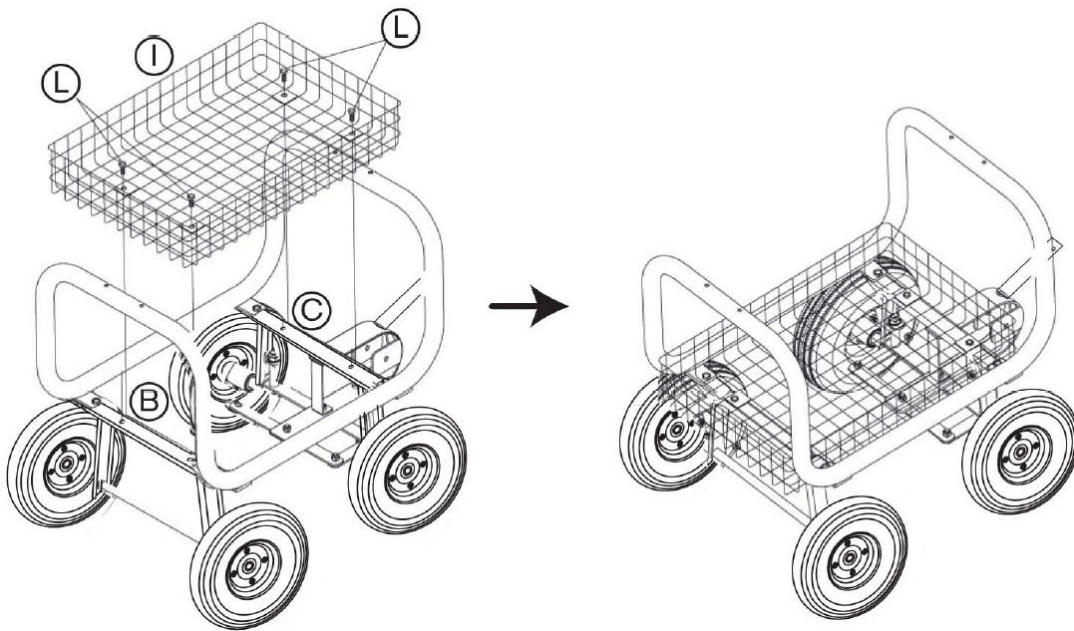


Figure 3

4. See Figure 4. Attach the hose reel wheels (E1 & E2) to the drum (E3) using the M5 x 15mm screws and washers (Q).

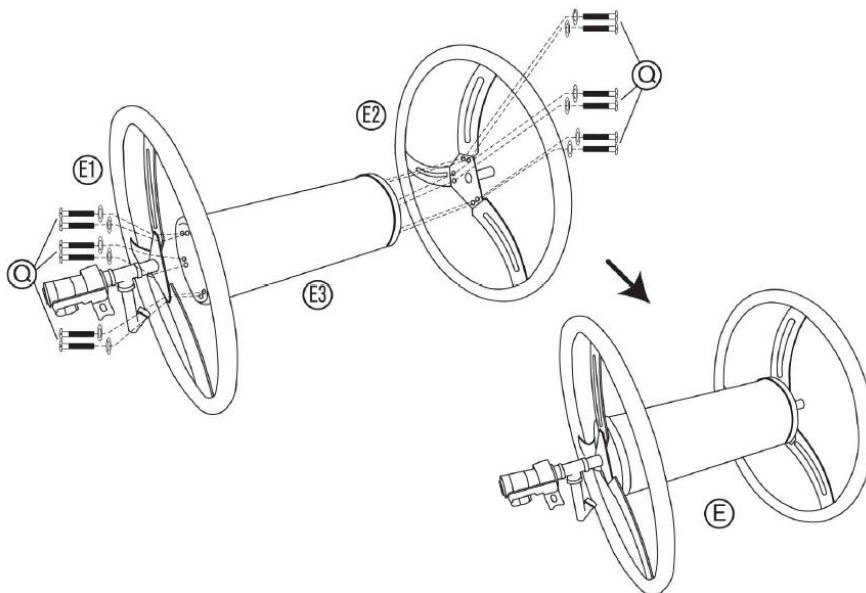
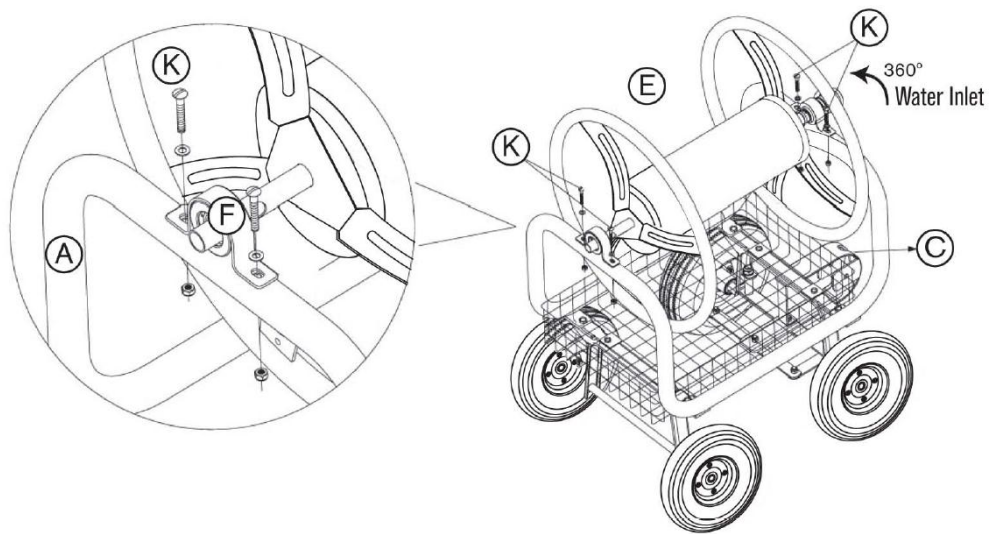


Figure 4

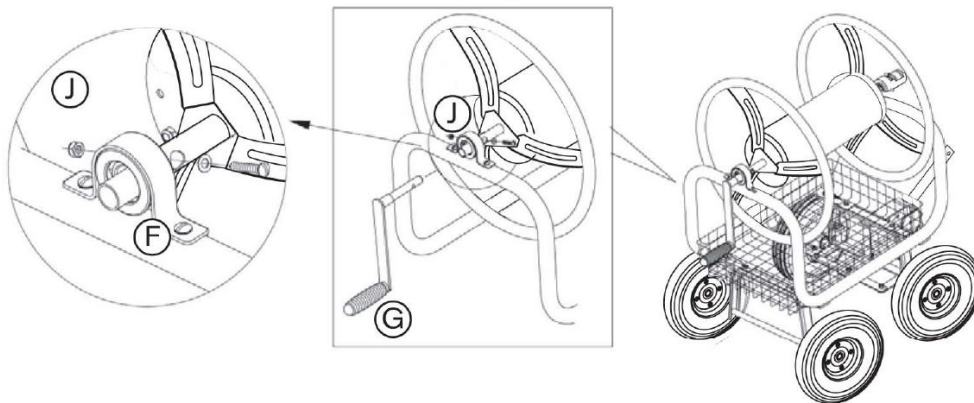


5. See Figure 5. Place the assembled hose reel (E) onto the top of the frame (A). Ensure that the water inlet (with the bearing bracket) is on the same end of the cart as the front axle (C). Place the bearing bracket (F) onto the other end of the hose reel assembly (E) and secure using four M6 x 42mm screw, nut and washers (K).



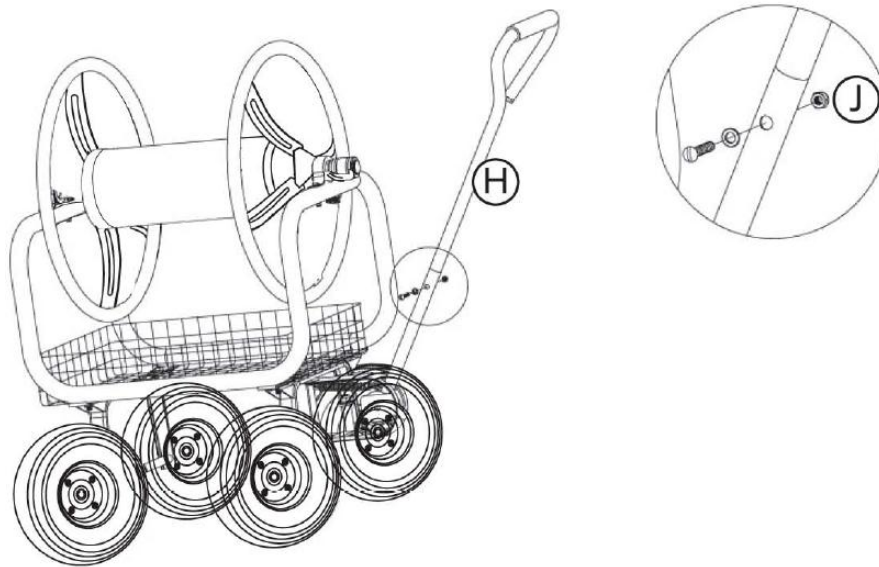
**Figure 5**

6. See Figure 6. Insert the crank handle (G) into the bearing at the rear of the frame (F). Align the holes for proper placement and secure using one M6 x 30mm screw, nut and washer set (J).



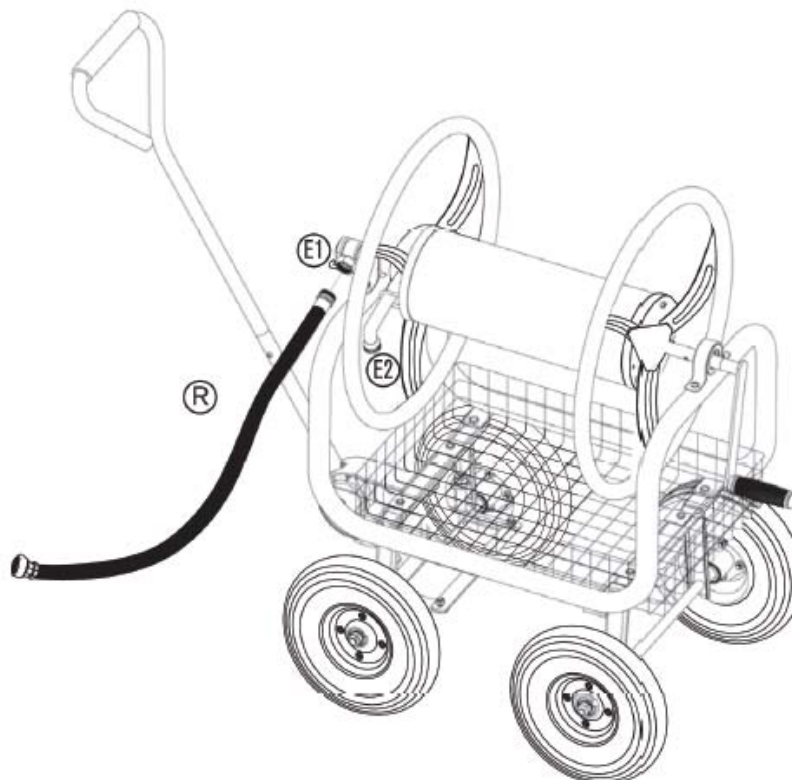
**Figure 6**

7. See Figure 7. Connect the long handle (H) with the bar of the front axle with one M6 x 30mm screw and nut and washer set (J).



**Figure 7**

8. See Figure 8. Attach the male coupling end of leader hose (R) to the water inlet coupling (E1) and tighten.



**Figure 8**

## Before Each Use

- Ensure that the cart and hose reel are in proper working order before use.
- Inspect the cart fittings, alignment, hoses and components periodically. Have damaged or worn components repaired or replaced by an authorized technician.

## Operating Instructions

- Always release water pressure by leaving the hose nozzle OPEN when not in use.
- Be sure to have the water turned OFF and the nozzle OPEN before rewinding hose.

## After Each Use

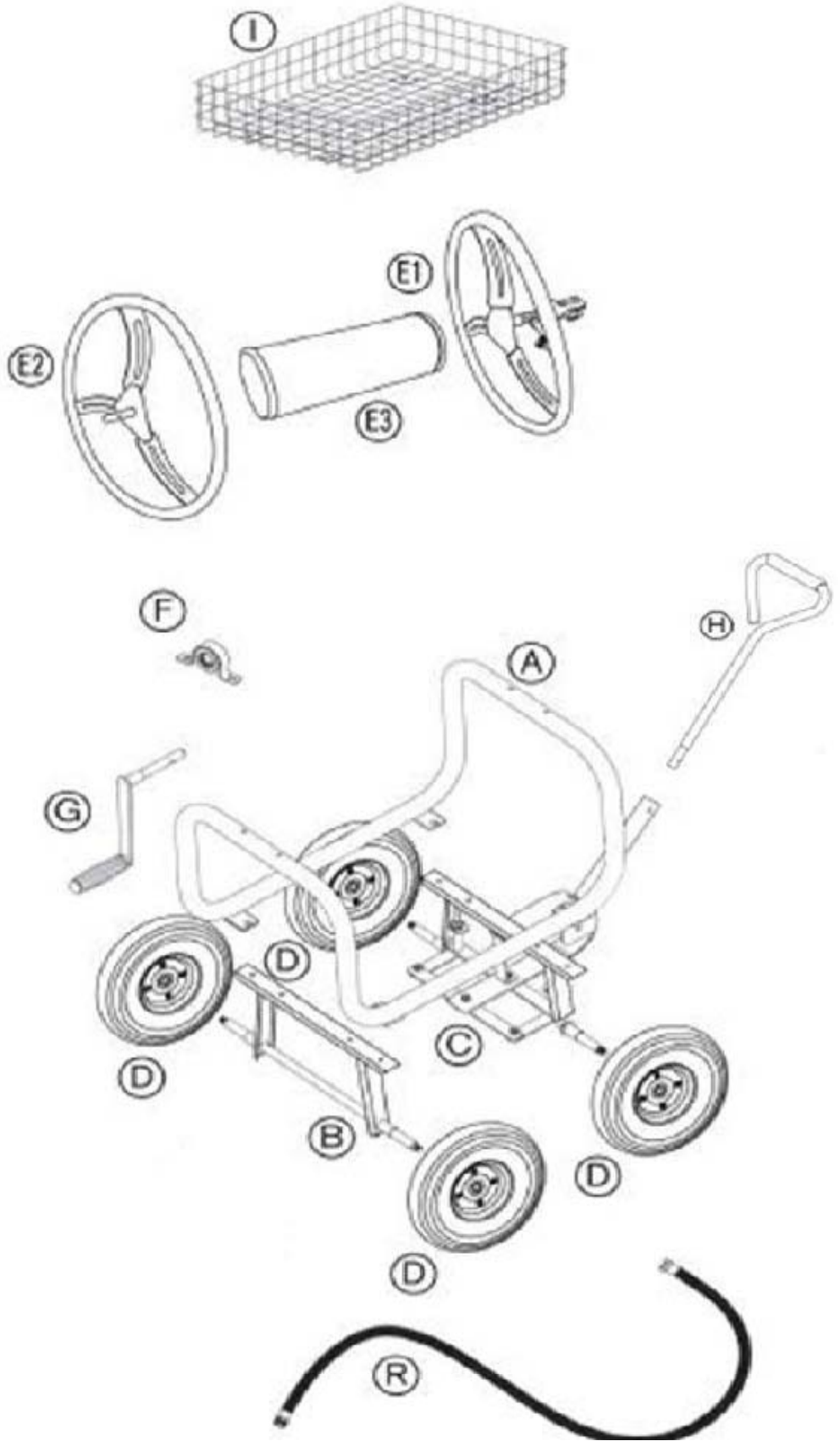
- After use, close water source and release pressure in the hose.
- After releasing pressure, it is recommended to clean the hose with a cloth dipped in warm water to remove dirt or deposits then rewind the hose on the reel keeping the windings straight.
- When the cart will not be used for an extended period, store it indoors.
- Lubricate the cart before storing it. In the event that it becomes necessary to store the tool for an extended period of time (overnight, weekend, etc..) apply no more than 1 ml of silicone oil to the reel bearings at that time to prevent rust.

## Maintenance

Maintain the cart by adopting a program of conscientious repair and maintenance in accordance with the following recommended procedures:

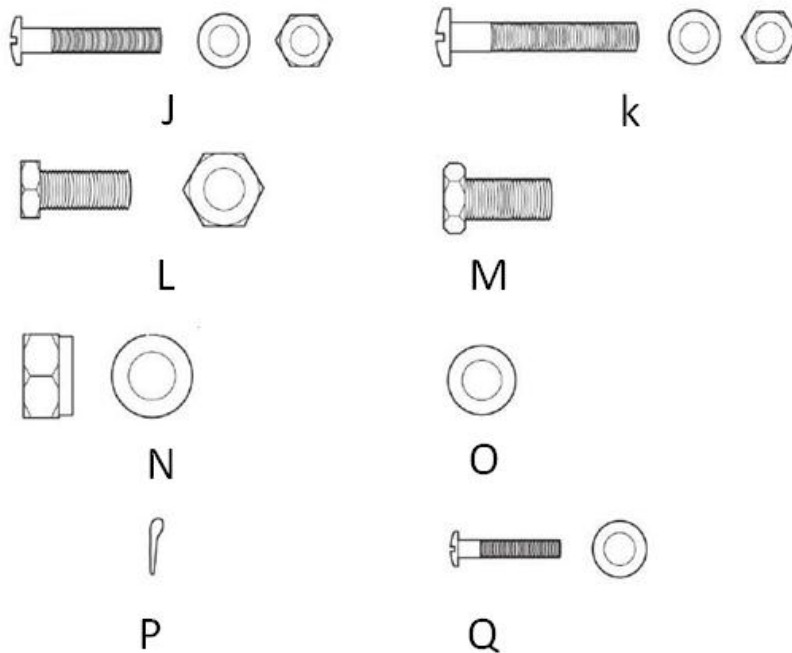
- Freezing temperatures can damage the hose and watering accessories. Always release pressure, disconnect the hose from water connections, then drain the water from the hose prior to freezing conditions. Move the cart indoors.
- Keep handles dry, clean, and free from oil and grease.
- Inspect the cart fittings, alignment, hoses and components periodically. Have damaged or worn components repaired or replaced by an authorized technician.
- Maintain the cart's label and name plate. These contain important information.

Parts Diagram



## Parts List

Part No.	Description	Quantity
A	U-Shape Frame	1
B	Rear Bracket Axle	1
C	Front Swivel Operating Bracket Axle	1
D	Tire	4
E1	Wheel With Brass Coupling	1
E2	Wheel With Crank Axle	1
E3	Drum	1
F	Bearing Bracket	1
G	Crank Handle	1
H	Long Connecting Handle With Grip	1
I	Basket	1
R	Leader Hose	1



Part No.	Description	Quantity
J	M6 x 30mm Screw, Nut & Washer	2
K	M6 x 42mm Screw, Nut & Washer	4
L	M8 x 20mm Screw, Nut	4
M	M10 x 20mm Screw	4
N	12mm Lock Nut & Washer	2
O	16mm Washer	2
P	Pin	2
Q	M5 x 15mm Screw Washer	12

## Troubleshooting

Problem	Solution
Water is leaking from a hose connection.	Tighten the leaking connection. If necessary, check whether the threads are stripped or not.
Water is leaking from the hose.	Check the hose for damage. Repair or replace the hose.
Hose is not retracting.	Check that the hose is not stuck on an obstacle. Check both reel bearings for dirt or damage. If necessary, lubricate the bearings with 1 ml of silicone oil.

## Replacement Parts

- For replacement parts and technical questions, please call Customer Service at **1-800-222-5381**.
- Not all product components are available for replacement. The illustrations provided are a convenient reference to the location and position of parts in the assembly sequence.
- When ordering parts, the following will be required: model number, serial number/lot date code, and description.
- The distributor reserves the rights to make design changes and/or improvements to product lines and manuals without notice.

## Limited Warranty

Northern Tool and Equipment Company, Inc. ("We" or "Us") warrants to the original purchaser only ("You" or "Your") that the Strongway product purchased will be free from material defects in both materials and workmanship, normal wear and tear excepted, for a period of **seven years** from date of purchase. The foregoing warranty is valid only if the installation and use of the product is strictly in accordance with product instructions. There are no other warranties, express or implied, including the warranty of merchantability or fitness for a particular purpose. If the product does not comply with this limited warranty, Your sole and exclusive remedy is that We will, at our sole option and within a commercially reasonable time, either replace the product or product component without charge to You or refund the purchase price (less shipping). This limited warranty is not transferable.

### Limitations on the Warranty

This limited warranty does not cover: (a) normal wear and tear; (b) damage through abuse, neglect, misuse, or as a result of any accident or in any other manner; (c) damage from misapplication, overloading, or improper installation; (d) improper maintenance and repair; and (e) product alteration in any manner by anyone other than Us, with the sole exception of alterations made pursuant to product instructions and in a workmanlike manner.

### Obligations of Purchaser

You must retain Your product purchase receipt to verify date of purchase and that You are the original purchaser. To make a warranty claim, contact Us at 1-800-222-5381, identify the product by make and model number, and follow the claim instructions that will be provided. The product and the purchase receipt must be provided to Us in order to process Your warranty claim. Any returned product that is replaced or refunded by Us becomes our property. You will be responsible for return shipping costs or costs related to Your return visit to a retail store.

### Remedy Limits

Product replacement or a refund of the purchase price is Your sole remedy under this limited warranty or any other warranty related to the product. We shall not be liable for: service or labor charges or damage to Your property incurred in removing or replacing the product; any damages, including, without limitation, damages to tangible personal property or personal injury, related to Your improper use, installation, or maintenance of the product or product component; or any indirect, incidental or consequential damages of any kind for any reason.

### Assumption of Risk

You acknowledge and agree that any use of the product for any purpose other than the specified use(s) stated in the product instructions is at Your own risk.

### Governing Law

This limited warranty gives You specific legal rights, and You also may have other rights which vary from state to state. Some states do not allow limitations or exclusions on implied warranties or incidental or consequential damages, so the above limitations may not apply to You. This limited warranty is governed by the laws of the State of Minnesota, without regard to rules pertaining to conflicts of law. The state courts located in Dakota County, Minnesota shall have exclusive jurisdiction for any disputes relating to this warranty.



Distributed by  
Northern Tool and Equipment Company, Inc.  
Burnsville, Minnesota 55306  
NorthernTool.com

Made in China