

Product features

- SPECIAL DESIGNED HEAD**
 - New improved pump head with "Non-scratched design"
 - Keep clean head without any scratch.
- SOFT TOUCH PUMP**
 - Children, seniors and adults can easily use the soft push head.
- MANY USE**
 - May be used in the home, restaurant, office and hospital will dispense water, sport drinks, sweetened drinks and alcoholic drinks.
- ADJUSTABLE DEPTH**
 - The pump may be adjusted to the depth of the liquid in the container.
- ECONOMICAL**
 - No need battery and long life with the manual type.

Specifications

Product	MANUAL WATER PUMP
Capacity	450 m/m - 490 m/m
Raw material	ABS, P.E, NYLON, SILICONE, SUS 304 (ALL FOOD - GRADE)
Operation Temperature	32° F(0° C)/140° F(60° C)

Model
TRPMW200 Manual Water Pump

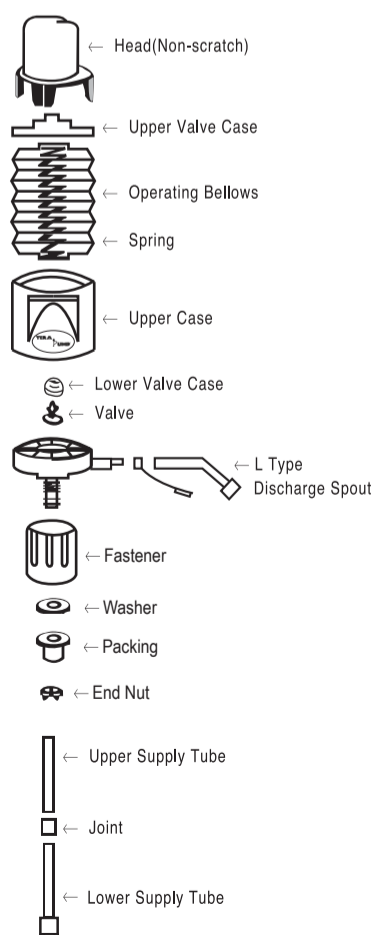
User's Guide



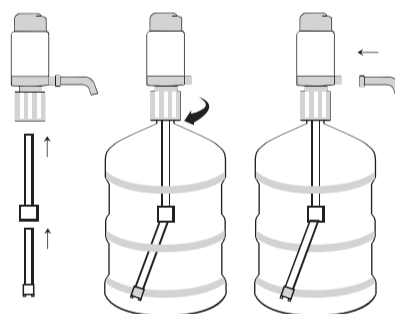
Read this manual carefully before use to avoid damage or unsatisfactory performance

TERA PUMP™
TeraPump
1941 East Occidental Street
Santa Ana CA 92705 USA
www.TeraPump.Net
E-mail : terapump@gmail.com
1-871-251-2288

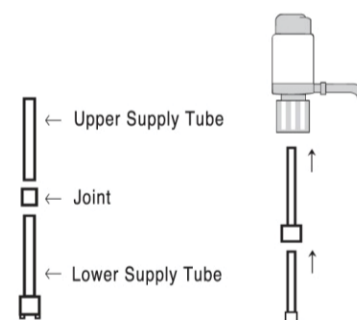
Parts List



Operating instructions



- Clean outside of pump with a soft cloth using a mixture and mild detergent. Fit the lower tube into upper tube and insert them to the body hole tightly.
- Insert pump into the bottle. The pump is made for 5 gallons bottle. Push the pump onto the neck of the bottle and turn clockwise to fix.
- Snap the discharge spout into the pump nozzle.
- Press the head to start the water flow.
- When not in use, cover the end of discharge spout with the lock-tab lid which hangs from the discharge spout.
- Pls clean the intake tube and discharge spout inside with the included brush.



- There are two plastic bags inside with various size tubes. These tubes will be assembled according to the height and/or size of the water bottle.
- There are 3 different sizes for the upper supply tube. The biggest one will fit most 5-6 gallon water bottles, the next smallest will fit most 3 gallon water bottles and the smallest tube will fit most 2 or 3 gallon water bottles.
- You will use the same lower supply tube for each assembly. This tube has small notches on the bottom to allow the flow of water.
- Use the joint to connect the upper supply tube (varies according to the gallon size) and the lower supply tube (stays the same for each size bottle).
- Once assembled, snap the upper supply tube into the bottom of the water pump.

Cautions

- Pls make sure the fastener to fit onto the bottle neck.
- Do not turn the fastener below indicated "STOP LINE."
- Do not drop the pump and keep away from heat or flame.
- Do not use with flammable liquids or hot liquids above 140° F(60° C)