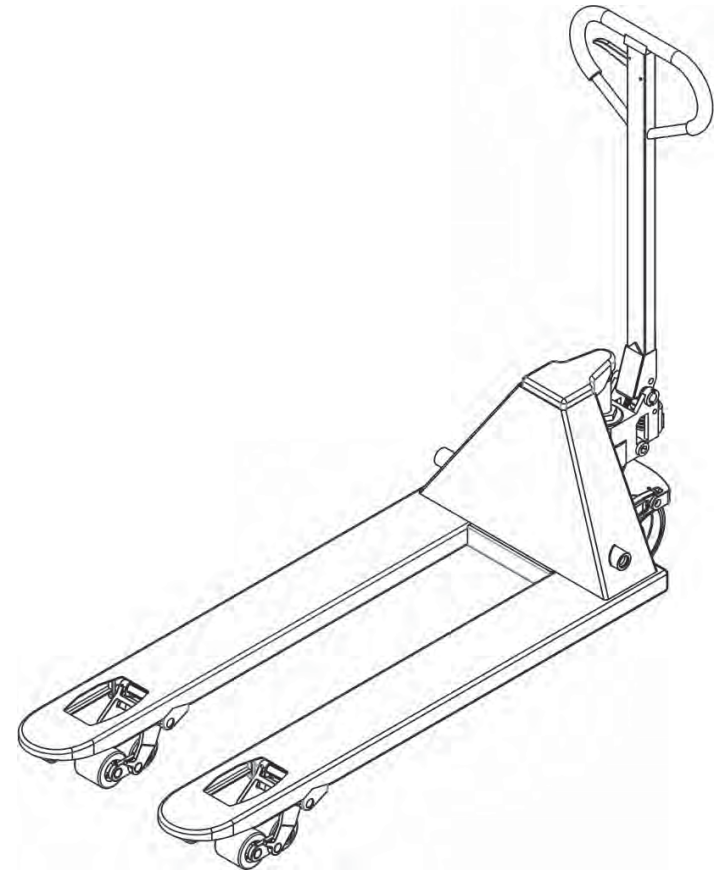


HAND PALLET TRUCK

INSTRUCTION MANUAL

XN20/XN25



Please read this manual carefully before using your machine

OPERATING PALLET TRUCK

To raise the forks, place handle lever in UP position (bottom part of the handle slot).
See Figure 2.

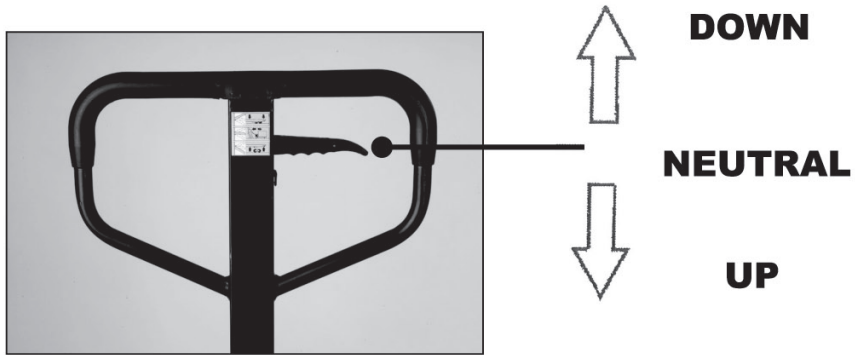


Figure 2

To lower forks, pull lever to DOWN position (upper part of the slot).
To freely move the handle, set the lever in NEUTRAL (center notch of the slot).

To lift a load:

1. Lower forks to lowest position.
2. Insert forks under load or into pallet.
3. Place lever in UP position (bottom part of the slot).
4. Move handles up and down until forks reach desired height.

To move a load:

1. Place lever in NEUTRAL position (center notch of the slot).
2. Pull or push to desired location.

To lower a load:

1. Pull lever to the DOWN position (upper part of the slot).
2. Pull forks away from load.

Cleaning Relief Valve

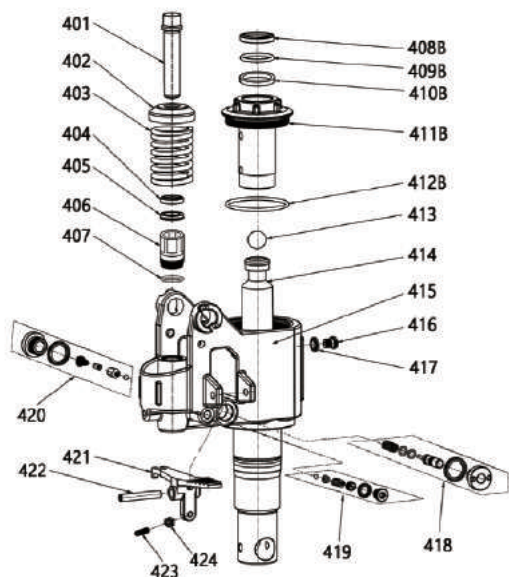
Over time, relief valve may become clogged with debris and will not work properly.

To clean relief valve, flush our hydraulic system as follows:

Pump handle quickly, raising pallet truck to full extent.

Then, quickly release pumping action.

BF Pump



ItemNo.	PartsNo.	PartDescription	QTY
401	30401	Smallpumpcore	1
402	30402	Coverofspring	1
403	30403	Bigspringcap	1
404	30404	Dustring Ø18*26*4.5/6	1
405	30405	Sealwasher Ø18*26*5	1
406	30406	Smallcylinder	1
407	30407	Coppergasket	1
408B	30408B	Dustring Ø31.5	1
409B	30409B	O-ring Ø31.5	1
410B	30410B	Sealwasher Ø31.5	1
411B	30411B	Slidebushing	1
412B	30412B	O-ring	1
413	30413	Steelball Ø19	1
414	30414	Pistonrod	1
415	30415	Pumpbody	1
416	30416	Bolt	1
417	30417	Seal	1
418	30418	Reliefvalve	1
419	30419	Safetyvalve	1
420	30420	Checkvalve	1
421	30421	Leverplate	1
422	30422	Springpin	1
423	30423	Bolt	1
424	30424	Nut	1

TROUBLESHOOTING

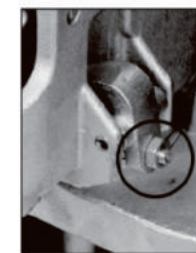
Possible problems could arise in the operation of your hydraulic pallet truck. Their probable cause(s) and corrective action(s) follow:

Condition	Probable Causes	Corrective Action
Hydraulic unit does not lift	Oil low in tank	Make sure there is no till leakage from valve and add oil.
	Steel ball not seated in hydraulic unit	See "Cleaning Relief Valve" in this manual.
	Worn O-ring in ram cylinder	Consult authorized service centre.
Once lifted truck lowers by itself	Steel ball not seated in hydraulic unit	See "Cleaning Relief Valve" in this manual.
	Worn O-ring in ram cylinder	See "Cleaning Relief Valve" in this manual.
	Relief valve not seated properly	See "Cleaning Relief Valve" in this manual.
	Relief valve not adjusted properly	Reload truck within load capacity and adjust valve by pressure adjustment screw.
	Oil leakage from each valve	Tighten plug of each valve.
Fork does not lower	Cam broken	Replace cam chain.
	UP-DOWN cam nut out of adjustment	Refer to "Adjusting UP-DOWN Cam" in this manual.
	Broken fork rods and linkage	Replace broken parts.
Lever does not set at NEUTRAL position	UP-DOWN cam nut out of adjustment	Refer to "Adjusting UP-DOWN Cam" in this manual.

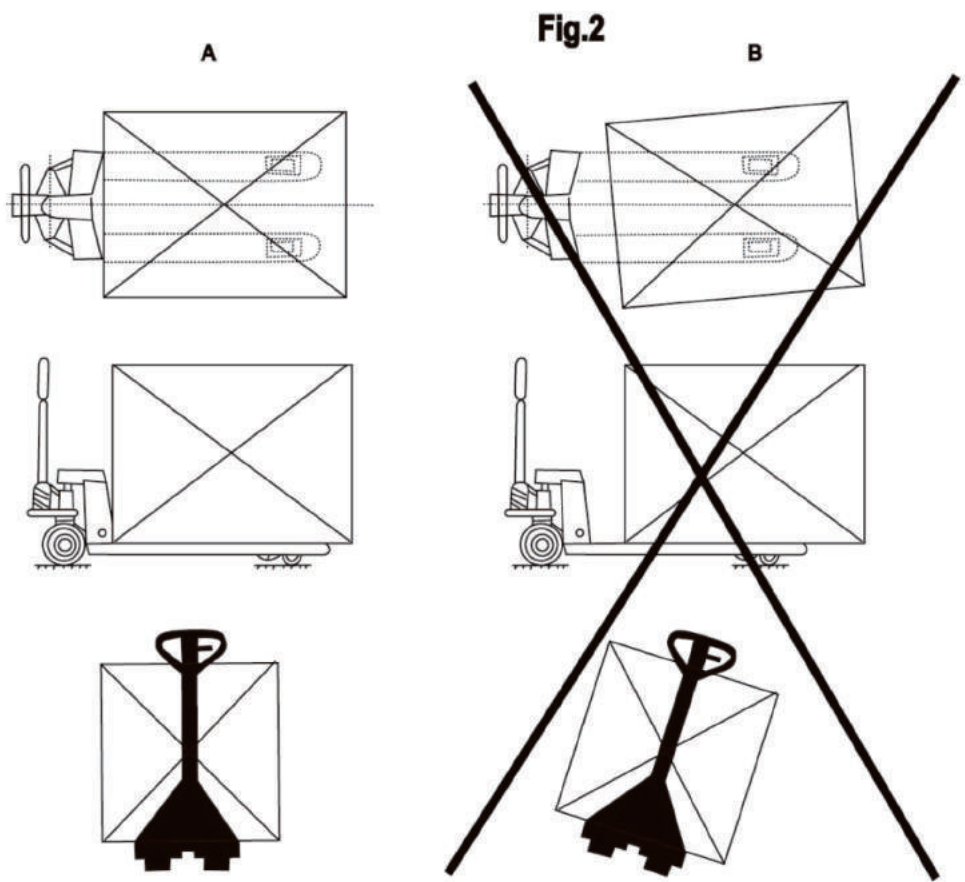
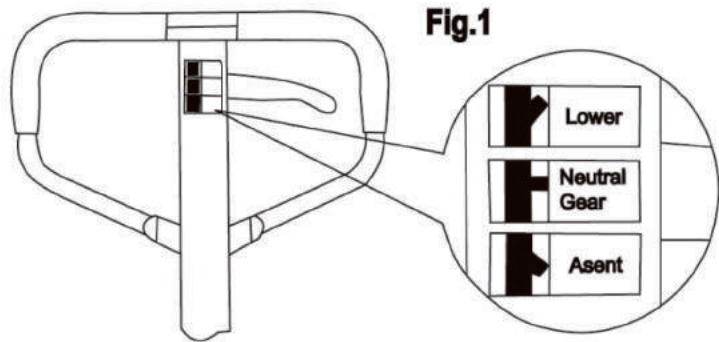
Adjusting UP-DOWN Cam



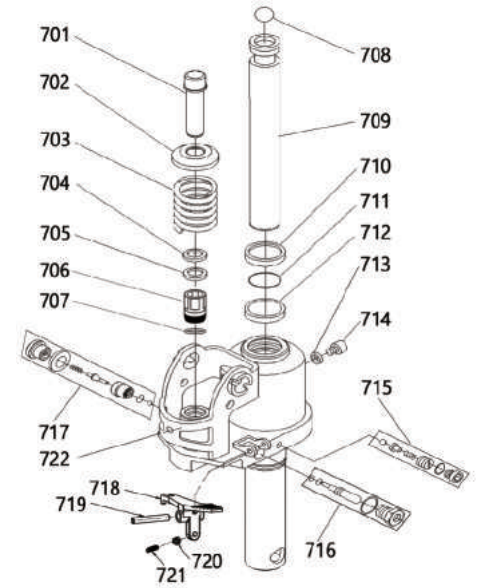
DO NOT adjust the up/down lever control using the lock nut at the end of the handle chain. If nylon locking threads are removed from the screw threads, rolling vibration will cause the nut to unscrew and fall off, leaving the up/down lever unusable.



Use proper set screw and lock nut adjustment located on the side of the pump. This feature was designed to ease the pallet truck adjustment. Tools required are: flat screwdriver and a 14mm wrench.

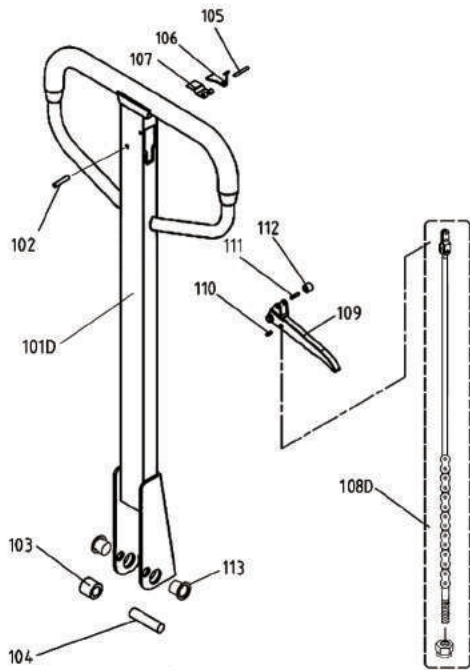


DFH Pump



ItemNo.	PartsNo.	PartDescription	QTY
701	30701	Smallpumpcore	1
702	30702	Coverofspring	1
703	30703	Bigspringcap	1
704	30704	Dustring Ø18*26*4.5/6	1
705	30705	Sealwasher Ø18*26*5	1
706	30706	Smallcylinder	1
707	30707	Coppergasket	1
708	30708	Steelball Ø19	1
709	30709	Pistonrod	1
710	30710	Dustring Ø31.5	1
711	30711	O-ring Ø31.5	1
712	30712	Sealwasher Ø31.5	1
713	30713	Bolt	1
714	30714	Seal	1
715	30715	Safetyvalve	1
716	30716	Reliefvalve	1
717	30717	Checkvalve	1
718	30718	Leverplate	1
719	30719	Springpin	1
720	30720	Nut	1
721	30721	Bolt	1
722	30722	Pumpbody	1

Handle-D (Square with rubber special for DFH pump)



ItemNo.	PartsNo.	Part	QTY
101D	10101D	Handlebody	1
102	10102	Springpin/6x30	1
103	10103	Pinchroller	1
104	10104	Pinchrollerpin	1
105	10105	Springpin/4x30	1
106	10106	Torsionalspring	1
107	10107	Hinge	1
108D	10108D	Connectingrod	1
		Chain	1
		Swingbolt/M5	1
		Nut/M5	1
		Connectingplate	1
		Rivet/Φ3×6	1
109	10109	Fingerlever	1
110	10110	Springpin/4x13	1
111	10111	Springpin/4x17	1
112	10112	Roller	1
113	10113	Axlesleeve	2

WARNING!

- Read and understand the entire operator's manual before using the pallet truck.
- Don't load pallet truck beyond rated capacity of 5,500 lbs. for the standard models and 6,600 lbs. for heavy-duty models.
- Secure load before transporting.
- Keep the load centered on the pallet.
- Don't operate loaded pallet truck on ramps or inclines.
- Always wear appropriate safety shoes.
- Never leave a loaded pallet truck unattended in the raised position; always lower load to the floor.

PALLET TRUCK ASSEMBLY

Note: Individual trucks are assembled and ready to use. Pallet trucks purchased in crate quantities (6 units to a crate) require some assembly.

Tools needed for assembly: hammer, flat screwdriver, 14mm wrench

To attach handle assembly to the frame:



- 1.**
***** IMPORTANT - SAFETY *****
 Verify that spring safety pin is in place. The pin should be well rested in the holes situated on each side of the pump housing. If the safety pin is not rested properly in one of the holes, put pressure on the spring using a "C" clamp pushing down on the pump stem. Once pressure is relieved on the pin, reinsert properly and remove clamp slowly.



- 2.**
 Insert handle pin into corresponding holes and using a hammer, drive in one spring pin on one side only.



- 3.**
 Insert handle pin without the handle and verify that the center hole is facing you.



- 4.**
 If handle pin's center hole is facing away from you, insert pin from other side.
***** IMPORTANT - FACT *****
 The up/down lever's chain passes through this center hole. If left this way, the chain will have an "S" form and be under too much tension, making the up/down lever difficult to use accurately.

Handle-C (Triangle without Rubber)



- 5.**
***** IM PORTANT - CHAIN*****
 Befo re this step, make sure to feed the chain on the outside of the piston stem roller (see yellow arrow). If left in its proper position, it will not be possible to insert the handle pin and chain, breakage may occur.
 Align handle holes with pump housing holes and push through handle pin (see red arrow)



- 6.**
 Make sure that handle pin is completely through the handle and resting on the other side.



- 7.**
 Pull down on the handle to release the tension on the safety pin. CAREFULLY remove the safety pin.



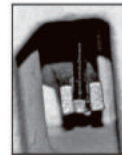
- 8.**
 Feed the chain and nut first back inside the handle THROUGH the handle pin's center hole.
*****IMPORTANT - TIP *****
 Release the up/down lever to its lowest position to make the process easier.



- 9.**
 Once the chain is in the proper position, check to see that it moves freely and that it is not obstructed.



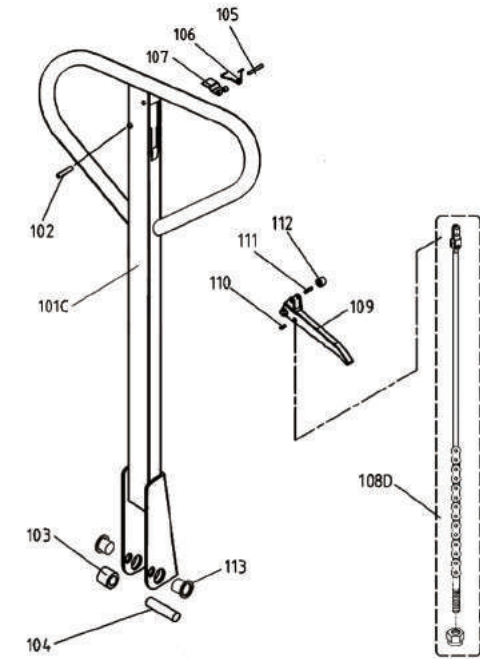
- 10.**
 Using both hands, push on the valve cam to raise the hook inside the housing and feed the end of the chain in the cam. (see image at right)



- 11.**
 Pump the lever a few times to raise the forks. Put the up/down lever to its NEUTRAL position. Using a 14mm wrench and a flat screwdriver, adjust the valve cam so that the forks don't lower or rise (if handle is pumped) at this position.



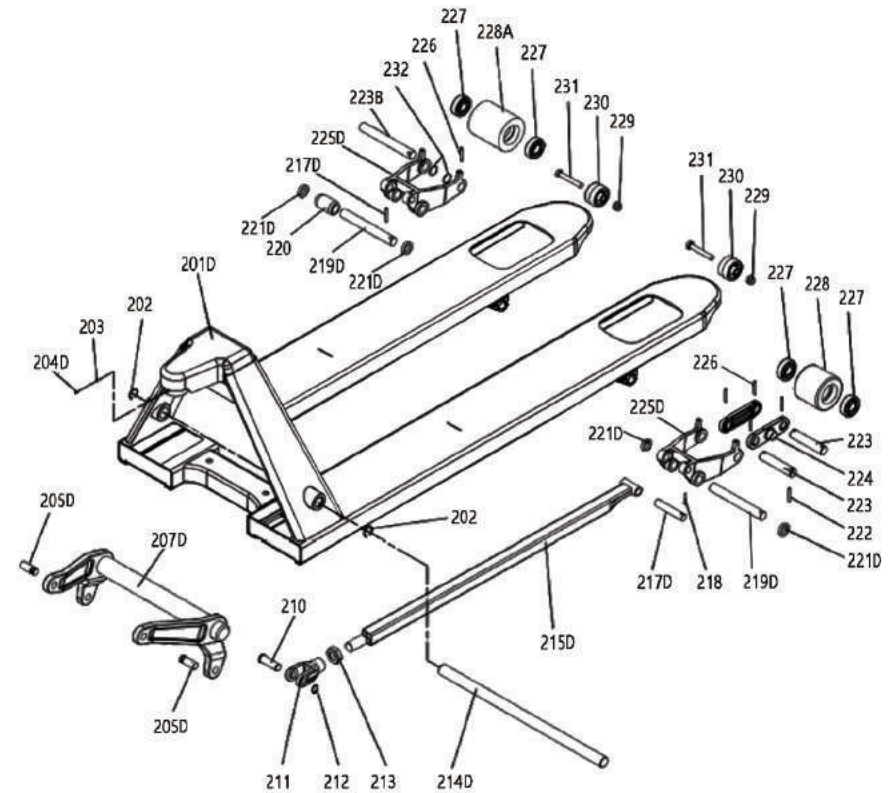
- 12.**
***** IMPORTANT - FINAL CHECK *****
 Test all the features of the pallet truck before this step. The handle should be pumped with full strokes to prime and eliminate air in the system. The up/down lever should be checked at the handle's lowest position for this puts the most tension on the chain. Once the pallet truck is adjusted properly and is performing well, drive in the second spring pin using a hammer.



ItemNo.	PartsNo.	Part	QTY
101C	10101C	Handlebody	1
102	10102	Springpin/6x30	1
103	10103	Pinchroller	1
104	10104	Pinchrollerpin	1
105	10105	Springpin/4x30	1
106	10106	Torsionalspring	1
107	10107	Hinge	1
108D	10108D	Connectingrod	1
		Chain	1
		Swingbolt/M5	1
		Nut/M5	1
		Connectingplate	1
		Rivet/Φ3×6	1
109	10109	Fingerlever	1
110	10110	Springpin/4x13	1
111	10111	Springpin/4x17	1
112	10112	Roller	1
113	10113	Axlesleeve	2

ItemNo.	PartsNo.	Partsdetails	Qty.
100C	10100C	Handleassy(Trianglewithoutrubber)	(1)
100D	10100D	Handleassy(SquarewithrubberspecialforDFHpump)	1
200	10200	SteelballØ19	1
222	10222	Springpin ϕ 5×30	2
226	10226	SpringpinØ5×35	2
227	10227	Bearing6204-2RS	4
300D	20300A	DFHpumpassy.	1
300E	20300B	BFpumpassy.	(1)
301	10301	Wheelaxle	1
302	10302	Dustring	1
303	10303	CirclipforshaftØ20	1
304	10304	Axleadjustinggasket	1
305D	20305	CirclipforshaftØ50(DFHpump)	1
	20305-2	CirclipforshaftØ55(BFpump)	1
306D	20306-1	PUsteeringWheelØ180*50	2
	20306-2	PAsteeringWheelØ180*50	2
	20306-3	RubbersteeringWheelØ180*50	2
307	10307	SpringpinØ8×45	1
309D	20309	Pushingballbearing51110 (DFHpump)	1
	10309	Pushingballbearing51111(BFpump)	(1)
310D	20310	HandleaxleΦ19.8*85.5(ForDFHpump)	1
	10310-1	HandleaxleΦ19.8*98(ForBFpump)	1
311D	20311	Thruststrip(ForDFHpump)	1
	20311-2	Thruststrip(ForBFpump)	1

Chassis



ItemNo.	PartsNo.	Partsdetails	Qty.
201D	20201	Chassis	1
202	10202	CirclipforholeΦ26	2
203	10203	SpringgasketΦ6	1
204D	20204	BoltM6×12	1
205D	20205-1	ConnectingpinΦ15.8*48.5(DFH pump)	2
	20205-2	ConnectingpinΦ15.8*41(BF pump)	(2)
207D	20207-1	Swingarm for550mm	1
	20207-2	Swingarm for685mm	(1)
210	10210	AxleΦ15.8*52	2
211	10211	Pushrodfork	2
212	10212	CirclipforshaftΦ15.8	2
213	10213	NutM22	2
214D	20214-1	LongaxleΦ24.5*496for550mm	1
	20214-2	LongaxleΦ24.5*608for685mm	1
215D	20215	Pushrod(Only1150mm)	2
217D	10217	AxleΦ15.8*105	2
218	10218	SpringpinΦ5×26	2
219D	10219	LevelblockaxleΦ19.8*161	2
221D	10221	Axlesleeve	4
222	10222	Springpin φ5×30	4
223	10223-1	RolleraxleØ19.8*94.5	4
223B	10223-2	RolleraxleØ19.8*128(Single loading wheel)	2
224	10224	Tri-connectplate	4
225D	10225	Levelblock(Fordoubleloadingwheel)	2
226	10226	SpringpinΦ5×35	8
227	10227	Bearing6204-2RS	8
228	10228-1	PUdoubleloadingwheelØ80*70	4
	10228-2	PAdoubleloadingwheelØ80*70	4
	10228-3	PUsingleloadingwheelØ80*93	2
228A	10228-4	PAsingleloadingwheelØ80*93	2
229	10229	NutM10	2
230	10230	Enterroller	2
231	10231	BoltM10×65	2
232	10232	Axleadjustinggasket	2

Handle & Pump

