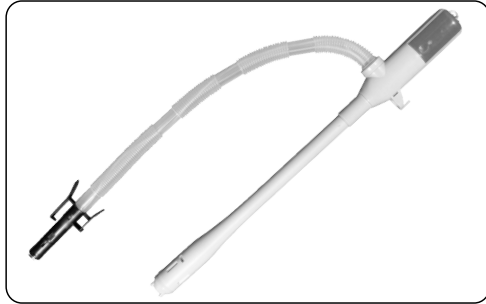


Model
TRHA03

BATTERY OPERATED PUMP

INSTRUCTIONS AND PRECAUTIONS

! SAVE THESE INSTRUCTIONS.
READ ALL PRECAUTIONS AND INSTRUCTIONS.



TeraPump
1941 East Occidental Street
Santa Ana CA 92705 USA
www.TeraPump.Net
E-mail : terapump@gmail.com
1-877-251-2288



OPERATION

1. Check Pump to make sure there is no damage such as splits or holes in the Discharge Hose before use.
2. Immerse the suction pipe into the tank you wish to pump from and insert the discharge hose into the tank you wish to fill. (See Fig. 2)
3. Turn switch ON. It will be automatically stopped when it is filled up until stop line. When you want it to stop in the middle of operation, please turn off switch. Only switch on after submerging the suction pipe first.
4. When buzzer is sounding, it means that filling into tank is completely finished.

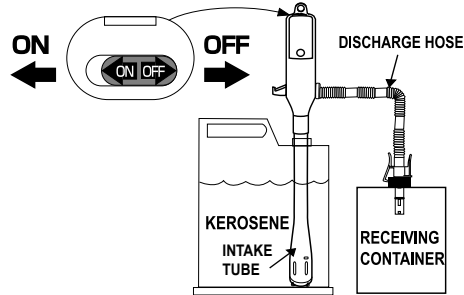


Fig. 2

CAUTION

1. Do not run dry
2. Do not use thinner or solvents.
3. Do not use this pump for hot water.
4. Do not use this pump for transferring the following liquids; Aceton, Benzen, Creosol, Ethyl, Phenol, Methyl ethyl, Concentrated caustic soda liquid, Nitric acid, Hydro-chloric acid, Sulfuric acid, Etc.
5. Before pumping, turn heater off allow to cool.
6. Do not turn the pump upside down after use.
7. Remove batteries when not in use.
8. Operate only in open, cool, and well-ventilated areas.

SPECIFICATIONS

Specifications	Delivery volume : About 9 liter / Min. Main Material : P.P, P.E, Acetal
Applicable Liquids	Gasoline, Kerosene, diesel oils, light oils, water(not safe for drinking), Etc.

ASSEMBLY INSTRUCTIONS

1. Open the Battery Cover with slide up.

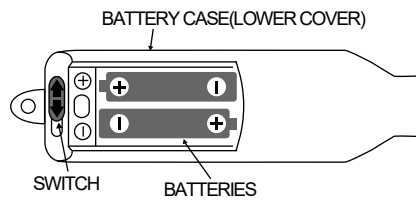


Fig. 1

2. Install two AA-Size batteries according to polarity directions embossed on the Battery Case. (See Fig. 1)

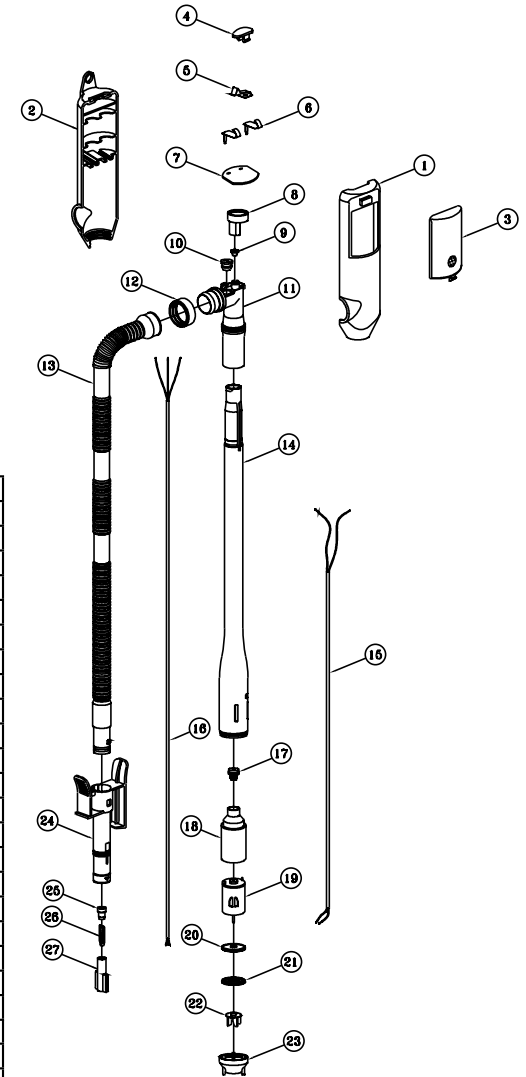
Caution: Position batteries in proper polarity and do not install batteries of different types, charge levels, or capacities together.

3. Slide down and close the Battery Cover onto the Battery Case.
4. Make sure the Discharge Hose is installed securely.

ASSEMBLY DIAGRAM

PLEASE READ THE FOLLOWING CAREFULLY

THE MANUFACTURER AND/OR DISTRIBUTOR HAS PROVIDED THE PARTS LIST AND ASSEMBLY DIAGRAM IN THIS DOCUMENT AS A REFERENCE TOOL ONLY. NEITHER THE MANUFACTURER NOR DISTRIBUTOR MAKES ANY REPRESENTATION OR WARRANTY OF ANY KIND TO THE BUYER THAT HE OR SHE IS QUALIFIED TO MAKE ANY REPAIRS TO THE PRODUCT, OR THAT HE OR SHE IS QUALIFIED TO REPLACE ANY PARTS OF THE PRODUCT. IN FACT, THE MANUFACTURER AND/OR DISTRIBUTOR EXPRESSLY STATES THAT ALL REPAIRS AND PARTS REPLACEMENTS SHOULD BE UNDERTAKEN BY CERTIFIED AND LICENSED TECHNICIANS, AND NOT BY THE BUYER. THE BUYER ASSUMES ALL RISK AND LIABILITY ARISING OUT OF HIS OR HER REPAIRS TO THE ORIGINAL PRODUCT OR REPLACEMENT PARTS THERETO, OR ARISING OUT OF HIS OR HER INSTALLATION OF REPLACEMENT PARTS THERETO.



PARTS LIST

Part	Description	Qty.
1	Upper Cover	1
2	Lower Cover	1
3	Battery Cover	1
4	Switch	1
5	Switch Spring	1
6	Terminal	1
7	PCB	1
8	Check Valve Case	1
9	Check Valve	1
10	Body Packing	1
11	Body	1
12	Ring	1
13	Discharge Hose	1
14	Suction Pipe	1
15	Motor Wire	1
16	Sensor Wire	1
17	Wire Packing	1
18	Motor Case	1
19	Motor	1
20	Motor Packing	1
21	Motor Case Cover	1
22	Impeller	1
23	Impeller Housing	1
24	Sensor Stem	1
25	Sensor Packing	1
26	Sensor Ass'y	1
27	Sensor Case	1