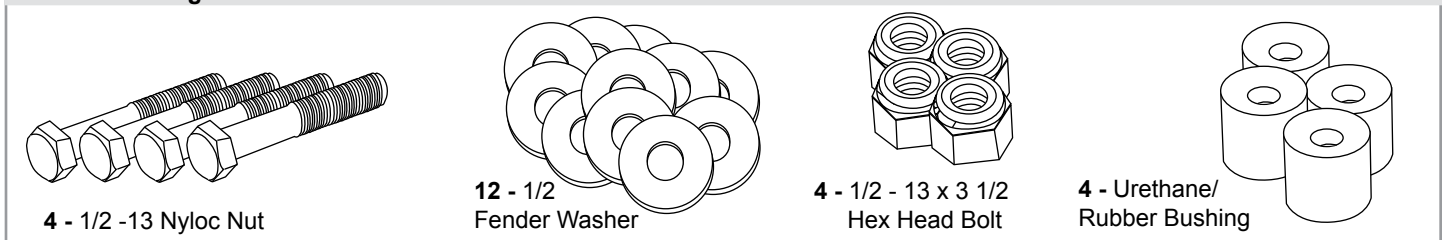


TRANSFER TANK INFORMATION SHEET

- **THIS TANK IS FOR PRIVATE USE AND IS TO BE USED ONLY AS A TRANSFER TANK! IT MUST NEVER BE CONNECTED TO A VEHICLE'S EXISTING FUEL SYSTEM AS AN AUXILIARY FUEL TANK!**
- Do not weld or cut on this tank for any reason.
- Do not pressurize this tank.
- This tank does NOT meet D.O.T. requirements for flammable fuels. Note that gasoline is a flammable fuel.
- This tank must be mounted securely to the transporting vehicle, either truck or trailer.
- The hoisting rings must not be used when liquid is in the tank. It must be emptied before moving.
- Remove filler cap slowly. Internal pressure can build up and vent suddenly when the cap is loosened.
- There must be a filter in the pump system used to transfer fluids from this tank.
- Follow the mounting instructions and use the rubber mounting kit provided. Proper mounting procedures must be observed to maximize the tank life. Mounting is not required, but is recommended.
- Improper mounting and/or use of third party kit in lieu of included rubber mounting kit will void warranty.
- Each state's Fire Marshall regulates fuel transportation, and the laws can vary from state to state.
- The tank user must contact the local authorities for correct regulations before filling this tank.
- The filler cap provided with this tank is designed to relieve pressure at 2 to 3.5 psi, and vacuum release at 2 oz. Transfer pumps with a flow rate greater than 25 GPM will exceed the cap's ability to vent.

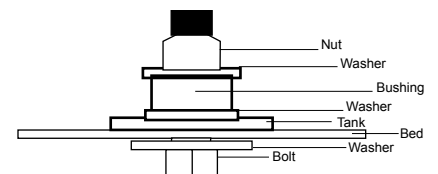
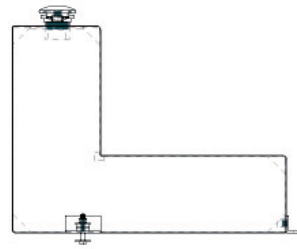
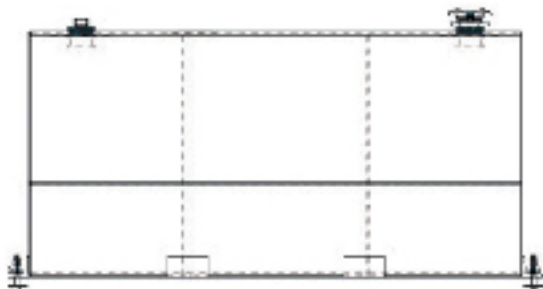
Kit Component List: Instruction sheet --- NOTE: Tighten bolts to compress bushing 1/8" to 1/4" only!

Hardware Package



Mounting Procedure:

1. Check hardware kit to ensure that all components are accounted for. Refer to kit component list.
2. Place tank in desired location in bed of pick-up (Be sure tank is not rubbing edges of cargo bed).
3. Mark location of (4) mounting holes in the mounting bracket at the desired location (Remove tank before drilling holes).
4. Drill 9/16" holes in marked location (CAUTION!: Check to ensure the area is free of fuel lines, brake lines, and wiring).
5. Return tank to predetermined location.
6. a) Insert Bolt with Fender Washer up into 9/16" hole in floor of pick-up bed & mounting foot on tank.
b) Slip Fender Washer / Bushing / Fender Washer on to Bolt.
c) Secure Bolt with Nylock Nut.
7. Do not over tighten Nylock Nut! Compress bushing 1/8" to 1/4" only!
8. **(OPTIONAL)** If your tank included a pump at time of purchase, please see the instructions included in the pump packaging for proper mounting procedures.



CAUTION: FAILURE TO FOLLOW INSTALLATION INSTRUCTIONS MAY RESULT IN LOSS OF CONTENT AND MAY PRODUCE A FIRE AND/OR ENVIRONMENTAL HAZARD.

WARNING

These transfer tanks are designed and manufactured to be used as a liquid transfer tank. **ONLY. These are SOLELY FOR PRIVATE USE** and not for interstate commerce or commercial applications. These are NOT designed for use as an auxiliary fuel tank to be connected to your vehicle's primary fuel system. Their intended use and design

DOES NOT meet Title 49 of the U.S. Federal Register, governing transportation. These tanks **MUST BE VENTED AT ALL TIMES** to allow for expansion and to prevent any vacuum formation during liquid removal. These Liquid Transfer Tanks are intended for use with combustible fuels only (such as diesel fuels). These tanks **DO NOT MEET** Department of Transportation regulations for flammable fuels (such as gasoline).

