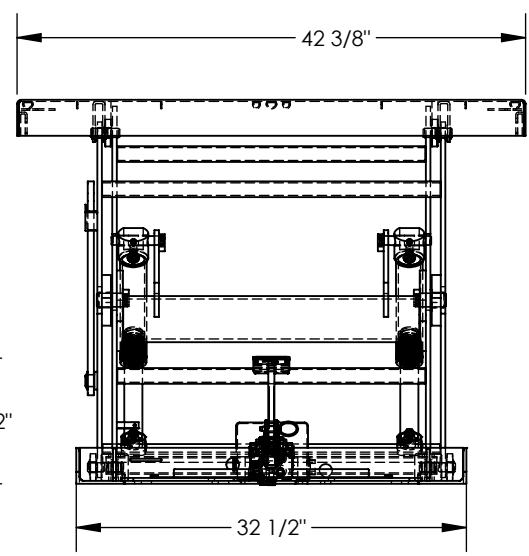
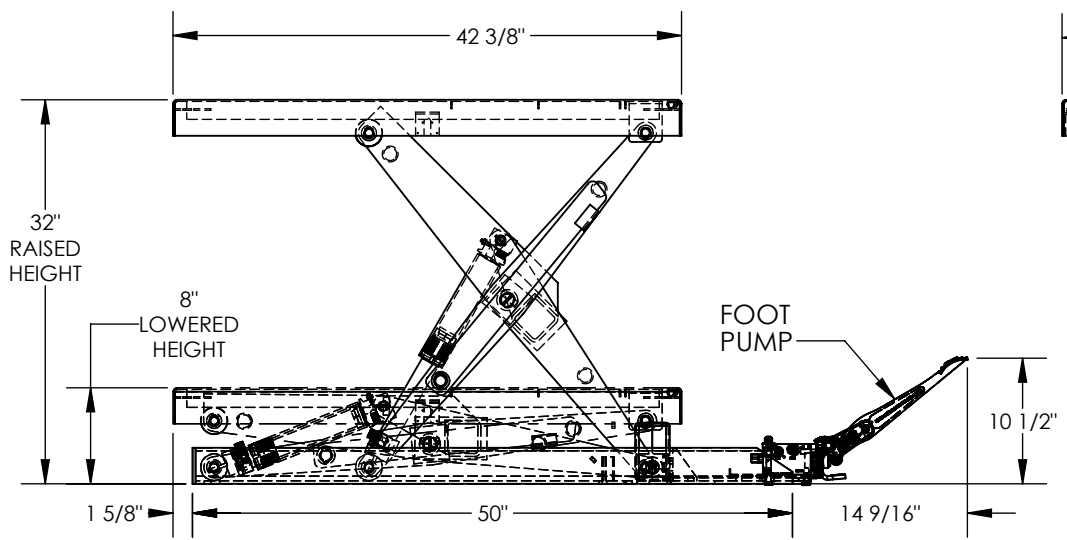


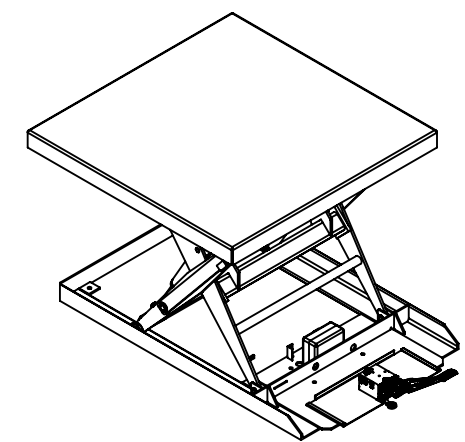
# FOOT PUMP HYDRAULIC SCISSOR LIFT TABLE - SCTAB-2000-4242-FP

APPROX WEIGHT: 360.02 lbs.  
 DOES NOT INCLUDE WEIGHT OF POWER OR PACKAGING!!!

\*\*\* ANY ADDITIONS, DELETIONS, OR OMISSIONS MUST BE CORRECTED ON THIS DRAWING AS THIS DRAWING WILL BE CONSIDERED ALL INCLUSIVE \*\*\*  
 ALL GRAPHICS PROVIDED ARE FOR REFERENCE ONLY. IF CERTAIN DIMENSIONS ARE CRITICAL PLEASE VERIFY THOSE DIMENSIONS WITH YOUR SALESPERSON



**DECK TOLERANCE ± 1/2"**  
**TABLE HEIGHT TOLERANCES ± 1/2"**  
**DECK FLATNESS ± 1/4"**



## STANDARD FEATURES

- MODEL NUMBER IS SCTAB-2000-4242-FP
- PLATFORM WIDTH IS 42 3/8"
- PLATFORM LENGTH IS 42 3/8"
- RAISED HEIGHT IS 32"
- LOWERED HEIGHT IS 8"
- TABLE CAPACITY (EVENLY DISTRIBUTED)
- MAX CAPACITY IS 2,000 LBS
- SAFETY MAINTENANCE PROPS, DISPLACEMENT
- STYLE CYLINDERS INSTALLED ROD DOWN
- EMERGENCY SAFETY STOP HYDRAULIC FUSES
- TWO SPEED AUTO SHIFTING MANUAL FOOT PUMP
- NUMBER OF PUMPS TO RAISE TABLE
- LOW PRESSURE: 20
- HIGH PRESSURE: 56
- DURABLE LIQUID PAINT BLUE FINISH

## SPECIAL FEATURES

NONE

DIMENSION TOLERANCE ± 1/4"

|   |  |             |
|---|--|-------------|
| <b>APPROVAL</b>   | I, THE UNDERSIGNED, AGREE THAT THE PRODUCT AS REPRESENTED SATISFIES DESIGN AND DIMENSION REQUIREMENTS. I ALSO ACKNOWLEDGE MY DUTY TO CONFIRM PRODUCT AND INSTALLATION COMPLIANCE WITH ALL APPLICABLE FEDERAL, STATE AND LOCAL REGULATIONS AND STANDARDS. |             |
|   | <b>UNITS REQUIRING APPROVAL DRAWINGS OR MODIFIED ARE NON-RETURNABLE</b>  |             |
|   | [ ] As drawn [ ] As marked   |             |
|   | Signed: _____  | Date: _____ |
| Printed Name: _____   |  |             |
| <i>LEAD TIME WILL START UPON RECEIPT OF SIGNED APPROVAL DRAWING</i> |  |             |

|                             |               |            |
|-----------------------------|---------------|------------|
| DISTRIBUTOR'S NAME:         |               | P.O.#      |
| <b>VESTIL MANUFACTURING</b> |               | X          |
|                             |               | W.O.#      |
| DRAWN BY: VG                | DATE: 2/13/13 | X          |
| REFERENCE: X                | SCALE: 1:16   | FILE NAME: |
| QUOTED LEAD TIME: X         | QUOTE # X     | 01-007-003 |