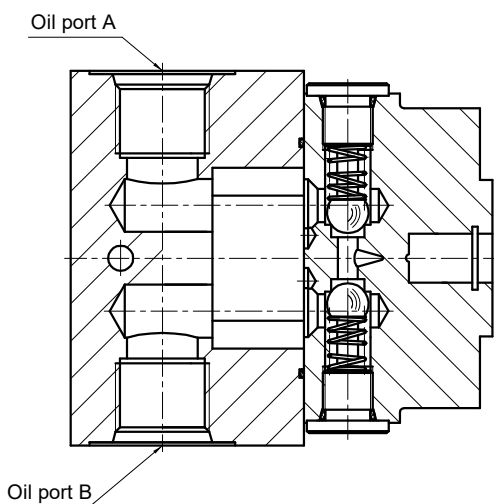


Hydraulic Schematic



Section A-A

| NTE P/N | BHWX P/N | Displacement | | Pressure Rating(PSI) | | Flow | | | | Oil port A and B | L1 (mm) | L2 (mm) |
|---------|-------------|--------------|--------|----------------------|--------------|---------|-------|---------|-------|------------------|---------|---------|
| | | cc/r | cu.in. | Continuous | Intermittent | 1800RPM | | 3600RPM | | | | |
| | | | | | | GPM | L/Min | GPM | L/Min | | | |
| 47345 | CBS6-F1.0SS | 1.16 | 0.07 | 3000 | 4000 | 0.55 | 2.08 | 1.1 | 4.16 | 9/16-18UNF | 99.2 | 118.2 |
| 47346 | CBS6-F1.6SS | 1.73 | 0.10 | 3000 | 4000 | 0.82 | 3.11 | 1.64 | 6.22 | 9/16-18UNF | 101.2 | 120.2 |
| 47347 | CBS6-F2.1SS | 2.17 | 0.13 | 3000 | 4000 | 1.03 | 3.90 | 2.06 | 7.80 | 3/4-16UNF | 101.2 | 121.7 |
| 47348 | CBS6-F3SS | 3.18 | 0.19 | 3000 | 4000 | 1.51 | 5.72 | 3.02 | 11.44 | 3/4-16UNF | 104.7 | 125.2 |
| 47349 | CBS6-F4SS | 4.34 | 0.26 | 2300 | 4000 | 2.06 | 7.81 | 4.12 | 15.62 | 3/4-16UNF | 108.7 | 129.2 |
| 47350 | CBS6-F6.3SS | 6.36 | 0.39 | 1600 | 2500 | 3.02 | 11.45 | 6.05 | 22.90 | 7/8-14UNF | 114.2 | 136.2 |
| 47351 | CBS6-F8.8SS | 8.83 | 0.54 | 1200 | 2000 | 4.20 | 15.89 | 8.40 | 31.78 | 7/8-14UNF | 114.2 | 144.7 |
| 47352 | CBS6-D9.6SS | 9.69 | 0.59 | 1200 | 2000 | 4.60 | 17.44 | 9.20 | 34.88 | 7/8-14UNF | 117.2 | 147.7 |

| | | | | | | |
|-------------|------------|-------------|-------------|------|-------------------------|--|
| Designed by | Checked by | Reviewed by | Approved by | Name | Bidirectional gear pump | BUCHER Bucher Hydraulics (Wuxi) Co., Ltd. hydraulics www.wx-dl.com tech@wx-dl.com |
| | | | | P/N | CBS6-F*SS | |
| | | | | Rev. | C | |