



FAST ACTION TRAILER JACK

2000 LB. CAPACITY

OWNER'S MANUAL



WARNING:

WARNING: Read carefully and understand all INSTRUCTIONS before operating. Failure to follow the safety rules and other basic safety precautions may result in serious personal injury.

Thank you very much for choosing an Ultra-Tow Product! For future reference, please complete the owner's record below:

Model: _____ Purchase Date: _____

Save the receipt, warranty and these instructions. It is important that you read the entire manual to become familiar with this product before you begin using it.

This machine is designed for certain applications only. The distributor cannot be responsible for issues arising from modification. We strongly recommend this machine is not modified and/or used for any application other than that for which it was designed. If you have any questions relative to a particular application, DO NOT use the machine until you have first contacted the distributor to determine if it can or should be performed on the product.

For technical questions please call **1-800-222-5381**.

TECHNICAL SPECIFICATIONS

Item Number	47344	47253	47252	47256	47255
Type	A-FRAME MOUNT	SWIVEL MOUNT	SWIVEL MOUNT	TUBE MOUNT	TUBE MOUNT
Capacity	2,000 lb.	2,000 lb.	2,000 lb.	2,000 lb.	2,000 lb.
Min. Mounting Height	10-1/4"	12"	9-5/8"	12-1/4"	9-5/8"
Crank Lifting Travel	7-5/8"	7-5/8"	7-1/4"	7-1/2"	7-1/4"
Fast Adjust Travel	11-5/8"	11-3/4"	12-3/8"	11-3/4"	12-3/8"
Working Range	10-1/4" to 29-1/2"	12" to 31-1/2"	9-5/8" to 29-1/4"	12-1/4" to 31-1/2"	9-5/8" to 29-1/4"
Handle Type	Topwind	Sidewind	Topwind	Sidewind	Topwind
Mount Type	Bolt or Weld on	Weld on	Bolt on, Ring Mount	Bolt on, Ring Mount	Weld on

GENERAL SAFETY RULES



WARNING: Read and understand all instructions. Failure to follow all instructions listed below may result in serious injury.



WARNING: The warnings, cautions, and instructions discussed in this instruction manual cannot cover all possible conditions or situations that could occur. It must be understood by the operator that common sense and caution are factors that cannot be built into this product, but must be supplied by the operator.

SAVE THESE INSTRUCTIONS

WORK AREA

- **Keep work area clean**, free of clutter and well lit. Cluttered and dark work areas can cause accidents.
- **Inspect work area** for any hazards prior to use of jack.
- **Keep children and bystanders** away while using a trailer jack. Distractions can cause you to lose control, so visitors should remain at a safe distance from the work area.
- **Be aware of all power lines, electrical circuits**, water pipes and other mechanical hazards in your work area, particularly those hazards below the work surface hidden from the operator's view that may be unintentionally contacted and may cause personal harm or property damage.
- **Be alert of your surroundings**. Using a trailer jack in confined work areas may put you dangerously close to cutting tools and rotating parts.

PERSONAL SAFETY

- **Not for use by children** or people with reduced mental capacity.
- **Do not use under** the influence of drugs or alcohol.
- **Use personal protective equipment. Always wear eye protection**. Safety equipment such as dust mask, non-skid safety shoes, hard hat, or hearing protection used for appropriate conditions will reduce personal injuries.
- **Do not overreach. Keep proper footing and balance at all times**. This enables better control of the trailer jack in unexpected situations.
- **Dress properly. Do not wear loose clothing or jewelry. Keep your hair, clothing and gloves away from moving parts**. Loose clothes, jewelry or long hair can be caught in moving parts.
- **Stay alert, watch what you are doing and use common sense when operating a jack**. A moment of inattention while operating jacks may result in serious personal injury.

TRAILER JACK USE AND CARE

- **Use on smooth, flat surfaces only**.
- **Do not force the trailer jack. Do not attempt to lift more than the rated maximum lifting capacity of this jack**.
- **Store idle jacks out of the reach of children and do not allow persons unfamiliar with the jack or these instructions to operate it**.
- **Maintain your trailer jack. Check for misalignment or binding of moving parts breakage of parts and any other condition. If damaged, have the jack repaired before use**.
- **Use the jack and accessories in accordance with these instructions, taking into account the working conditions and the work to be performed**. Use of the trailer jack for operations different from those intended could result in a hazardous situation.
- **Lifting device only**. Do not use for supporting load for an extended period of time.
- **Do not exceed rated capacity**.
- **Lock jack in vertical position before applying load**.
- **Wear ANSI-approved safety goggles during use**.

ADDITIONAL SAFETY WARNINGS

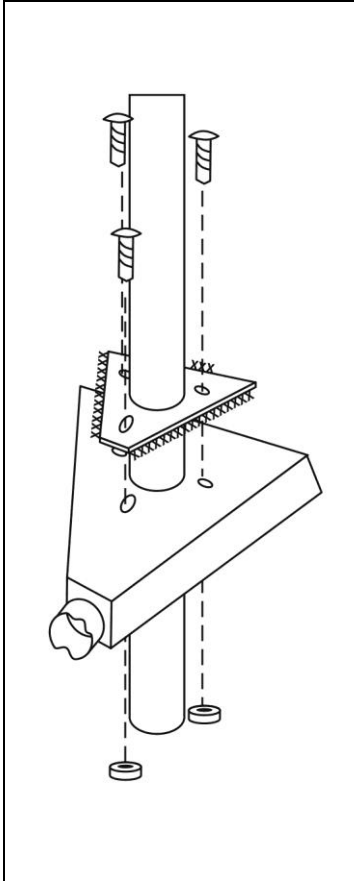
- Prevent trailer wheels from moving using wheel chocks while raising or lowering the jack. (if used with wheel)
- Before towing, fully raise the jack and secure properly in its horizontal position.
- Never position any part of body under jack or trailer while jack is supporting load.
- Inspect before use. Do not use if parts are loose or damaged.
- Use in accordance with the D.O.T. regulations.
- Maintain labels and nameplates on the jack. These carry important safety information. If unreadable or missing, contact the distributor for a replacement.
- Do not use blocks for additional ground clearance.
- Do not use on round tongue trailer.
- Apply force to jack vertically only. Side forces will compromise the jack. Lower trailer tongue height as far as possible before rolling trailer on the jack. Roll slowly on flat, level, hard surfaces only.
- Do not climb aboard any trailer/vehicle supported by a jack.
- This product is not a toy. Keep it out of reach of children.
- Use caution when using the jack to move a trailer without a vehicle. Losing control of the trailer due to uneven surfaces can lead to property damage or serious personal injury.
- Not a transport device. Minimize movement of trailer while supported by jack.
- Always secure the lock pin into position after raising or lowering, NEVER remove the lock pin when the jack is under load.
- DO NOT step or press the release plate when the jack is still under load. Always return/release the jack tube AFTER your jack is fully off the ground.
- Use your foot instead of your hand to do the return, be AWARE of the strong force when the jack returns.

MOUNTING

ASSEMBLY

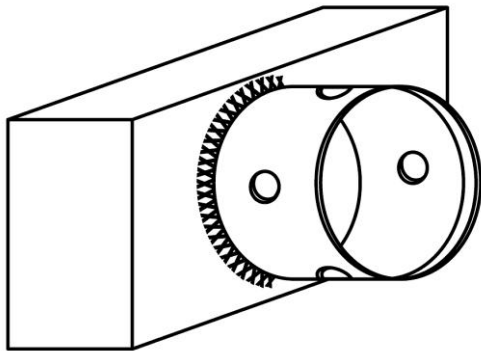
Depending on model, jacks can be bolted or welded on.

A-FRAME ASSEMBLY (Item# 437344)



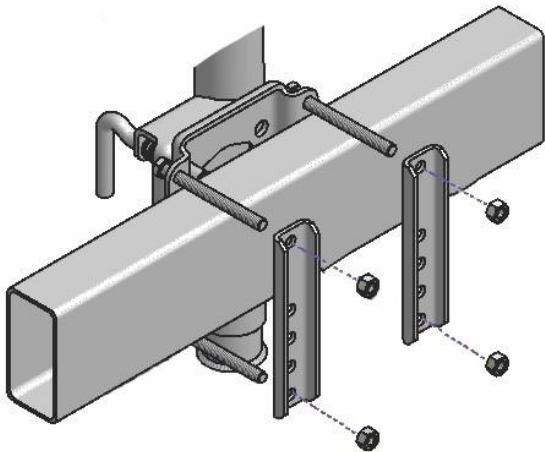
1. When mounting trailer jack, it is best to hook up to the tow vehicle to make sure trailer is secure. Chock the trailer wheels and support trailer frame securely using jack stands (sold separately).
2. Mount jack based on drawing shown at left.
3. Remove crank handle (#3) from jack by removing crank handle bolt (#4) and Nut (#5).
4. Remove middle tube assembly from outer tube (#1) and set aside middle tube assembly.
5. Place outer tube onto the A-frame hitch and align bolt hole pattern. Secure the outer tube to A-frame using bolts and washers (sold separately). With three 3/8" x 1" bolts and nuts (sold separately) secure jack tightly to the top of the a-frame coupler. (Regularly check to ensure bolts/nuts are tightened securely.)
6. Reinstall middle tube assembly up and into outer tube assembly, install crank handle, crank handle bolt and nut.
7. Install the foot pedal (#13) onto the bottom of the inner tube (#11). Use Foot Plate bolt (#14) and nut (#15) to secure the foot plate in place.
8. If your application is a plain mount, it may be mounted directly to a coupler with a 3/16" fillet weld. Align the foot (with the jack **and** coupler) as desired before welding. If welding, weld the recommended support plate to the bottom of the trailer frame. Use a 3/16" fillet weld. **All welding must be performed by an AWS certified welder.**

TUBE MOUNT ASSEMBLY (Item#s 47255 and 47256):



1. Determine the best location to mount the jack onto the trailer tongue. Make sure that the Jack does not interfere with the vehicle or trailer when turning or passing over speed bumps, boat ramps, etc.
2. Using a suitable welder, weld the Adapter Ring (#10) to the trailer tongue. Make sure the Adapter Ring (#10) is welded in right place and the Trailer Jack can be locked onto the Adapter (#10) in vertical position and horizontal position.
3. **All welding must be performed by an AWS certified welder.** A poor weld may cause the trailer to fall suddenly, potentially causing serious personal or property damage.
4. Attach the trailer jack by installing Outer Tube (#9) over the Adapter Ring (#10). Install the Lock Pin (#11) through the appropriate hole in the Outer Tube and the Adapter Ring to secure the trailer jack to the trailer tongue. Test the operation of the Trailer Jack. Place the Travel Lock Pin (#28) in each of the holes of the Inner Tube to make sure it holds the Trailer Jack in each of the possible positions. Insert the Foot Plate (#32) onto the bottom of the Inner Tube (#30). Use the Bolt (#33) and Nut (#34) to secure the Foot Plate in place.
5. Attach the Grip (#13) and the Bolt (#14) to the Crank Handle (#12) and secured with the Nut (#15).

SWIVEL MOUNT ASSEMBLY (Item#s 47252 and 47253):



1. Determine the best location to mount the Jack onto the trailer tongue. Make sure that the Jack does not interfere with the Vehicle or trailer when turning or passing over speed bumps, boat ramps, etc.
2. The Mounting Hardware includes two jack mounting plates, four mounting bolts, flat washers, spring washers, and nuts to attach the Jack to trailer tongue. Position the Rotating Mounting Plate so that the mounting bolts are as close as possible to the top and bottom edge of the trailer tongue. Use the configuration that best fits the trailer tongue. **Note:** Insert the Bolts from the Rotating Mounting Plate side, so that the Nuts and Bolts ends do not interfere when rotating the Jack.
3. Test the operation of the Trailer Jack. Rotate the Crank to raise and lower Trailer Jack. Pull the Release Handle and rotate the Trailer Jack from its vertical position to its horizontal position. Make sure that the Jack is able to lock into both of its positions.
4. Test the operation of the trailer jack. Place the Travel Lock Pin (#23) in each of the holes of the Inner Tube to make sure it holds the Trailer Jack in each of the possible positions.
5. Make any adjustments to the Trailer Jack location as necessary, then tighten the Mounting Hardware firmly to 15-20 ft. lb. Use a torque wrench to confirm tightness.
6. Insert the Foot Plate (#36) onto the bottom of the inner Tube (#34). Use the Bolt (#37) and Nut (#38) to secure the Foot Plate in place.
7. Attach the Grip (#30) and the Bolt (#31) to the Crank (#12) and secured with the Nut (#32). Determine the best location to mount the Jack onto the trailer tongue. Make sure that the Jack does not interfere with the Vehicle or trailer when turning or passing over speed bumps, boat ramps, etc.

OPERATION



WARNING: Never use Trailer Jack if the mounting hardware is not secure on the tongue of trailer. Regularly inspect hardware for proper mounting assembly.

DISCONNECTING THE TRAILER FROM THE TOWING VEHICLE



CAUTION: Before disconnecting, chock the trailer wheels to prevent the trailer from rolling. Never leave trailer unattended while in the process of connecting or disconnecting trailer.

1. With the trailer on the hitch, pull out the safety lock pin (#25), press down on the foot plate (#13) until foot plate hits the ground, immediately replace the safety lock pin (#25).
2. Rotate the Crank Handle until the trailer tongue clears the hitch. Once the trailer is at the desired height, fold the Crank over so that the knob is facing downward. This will help keep the knob out of the way.
3. Disconnect any safety chains, electrical connections and all other connections, if any, between the vehicle and the trailer.
4. When the vehicle is completely clear, and it is safe to do so, drive the vehicle away from the trailer.



CAUTION: Have a spotter watch this operation to be sure the trailer is clear of the vehicle, and does not roll away.

5. Level the trailer by turning the Crank Handle to raise or lower the trailer to the desired height. Flip the Crank up and over when completed to help keep the knob out of the way.

CONNECTING THE TRAILER TO THE TOWING VEHICLE



CAUTION: If the trailer tongue is too heavy, do not attempt to lift it; seek assistance.

1. Before connecting tow vehicle to trailer, chock the trailer wheels to prevent the trailer from rolling.
2. Rotate the Crank Handle to raise the trailer to the level of the towing vehicle's hitch.
3. With the assistance of a spotter, move the vehicle to the trailer, or roll the trailer to the vehicle.
4. Connect the trailer onto the towing vehicle's hitch.
5. Once trailer is fully connected to towing vehicle, continue to retract Jack to its uppermost position. Retract the Trailer Jack fully before towing the trailer. Flip the Crank up and over when completed to help keep the knob out of the way.
6. With the trailer coupled to the hitch, pull out the safety lock pin (#25), **keep your body and hands away from the area between the Foot Pedal Release (#16) and The Foot Plate (#13)**, carefully press down on the foot pedal release (#16) with foot, the Foot Plate will retract to its uppermost position automatically.
7. Immediately replace the safety lock pin (#25).



CAUTION: Do not tow trailer with jack in lowered position.

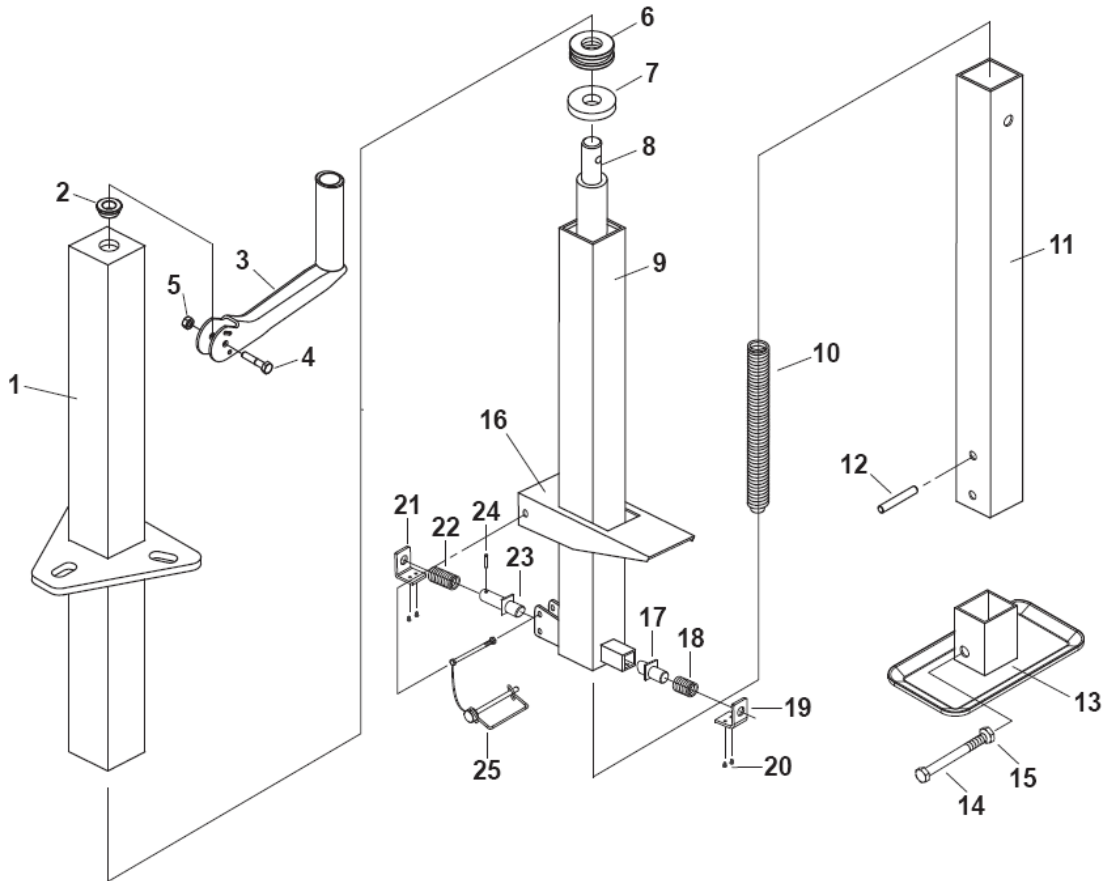
MAINTENANCE

- **Maintain your Trailer Jack.** Before each use, inspect the general condition of the jack. Check for loose hardware, misalignment or binding of moving parts, cracked or broken parts, damaged electrical wiring, and any other condition that may affect its safe operation.
- **Keep all moving parts lightly lubricated to prevent corrosion.**
- **After use,** wipe external surfaces of the jack with clean cloth.



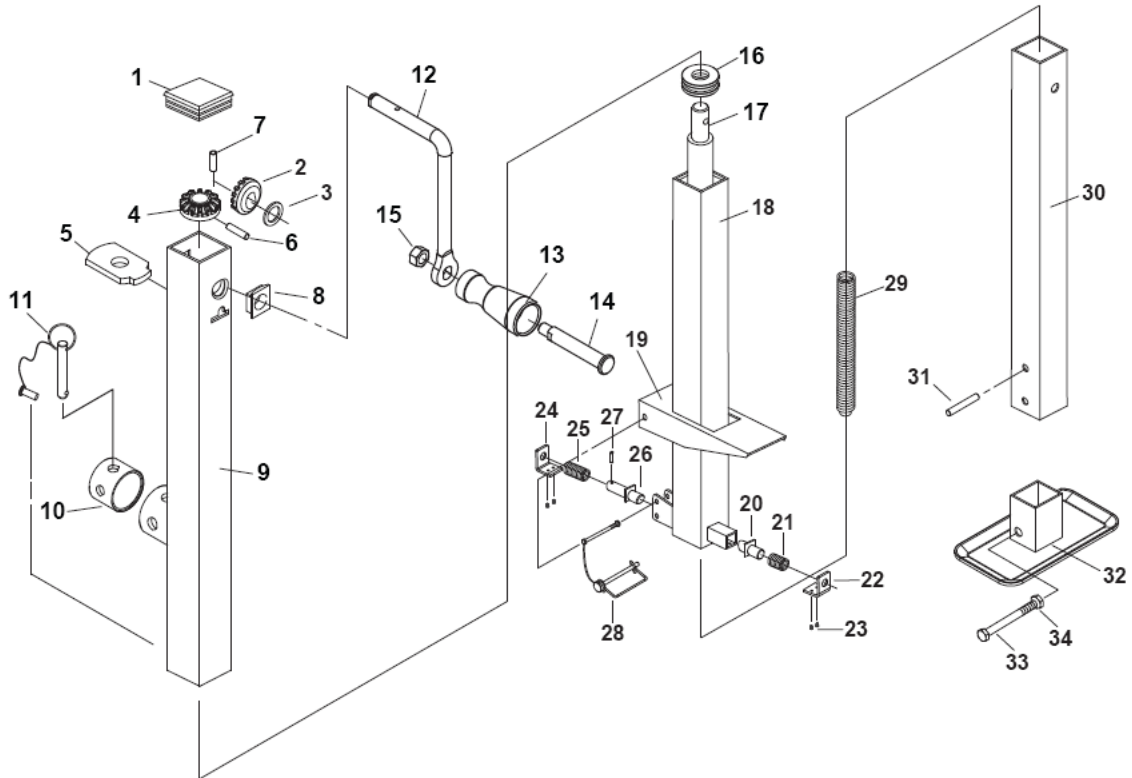
WARNING: FAILURE TO FOLLOW THESE INSTRUCTIONS COULD RESULT IN LOSS OF LOAD AND/OR PERSONAL INJURY OR DAMAGE TO PROPERTY.

DIAGRAM AND PARTS LIST — A-FRAME MOUNT (Item# 47344)



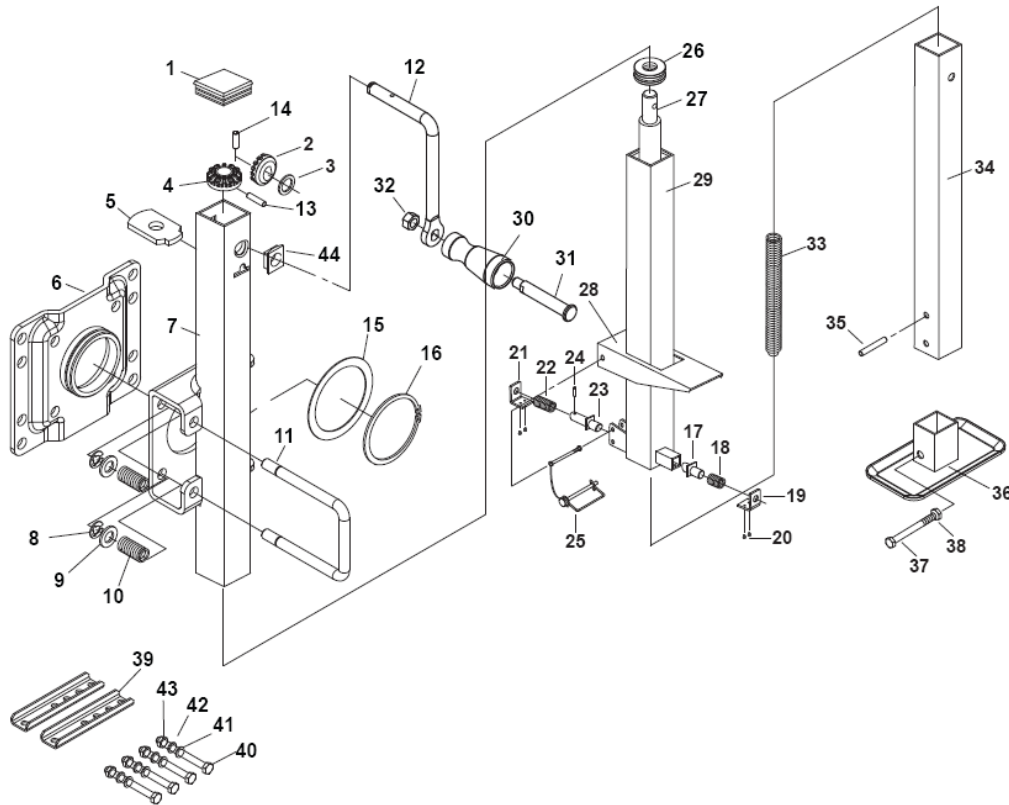
Ref #	Description	Qty	Ref #	Description	Qty
1	Outer Tube	1	14	Foot Plate Bolt	1
2	Axle Seal	1	15	Foot Plate Nut	1
3	Crank Handle	1	16	Foot Pedal Release	1
4	Crank Handle Bolt	1	17	Over Travel Lock Pin	1
5	Crank Handle Nut	1	18	Over Travel Lock Spring	1
6	Ball Bearing Kit	1	19	Over Travel Lock Cover	1
7	Bearing Washer	1	20	Lock Bolt	4
8	Screw	1	21	Travel Lock Cover	1
9	Middle Tube	1	22	Travel Lock Spring	1
10	Main Spring	1	23	Travel Lock Pin	1
11	Inner Tube	1	24	Travel Lock Roll Pin	1
12	Spring roll Pin	1	25	Safety Lock Pin	1
13	Foot Plate	1			

DIAGRAM AND PARTS LIST — TUBE MOUNT (Item#s 47255 and 47256)



Ref #	Description	Qty	Ref #	Description	Qty
1	End Cap	1	18	Middle Tube	1
2	Vertical Gear	1	19	Foot Pedal Release	1
3	Gear Washer	1	20	Over Travel Lock Pin	1
4	Horizontal Gear	1	21	Over Travel Lock Spring	1
5	Screw Axle Bushing	1	22	Over Travel Lock Cover	1
6	Horizontal Gear Lock Pin	1	23	Lock Bolts	4
7	Vertical Gear Lock Pin	1	24	Travel Lock Pin Cover	1
8	Jack Handle Shaft Bushing	1	25	Travel Lock Pin Spring	1
9	Outer Tube	1	26	Travel Lock Pin	1
10	Adapter Ring	1	27	Travel Lock Roll Pin	1
11	Lock Pin	1	28	Safety Lock Pin	1
12	Crank Handle	1	29	Main Spring	1
13	Handle Grip	1	30	Inner Tube	1
14	Handle Mount Bolt	1	31	Spring Roll Pin	1
15	Handle Mount Nut	1	32	Foot Plate	1
16	Ball Bearing Kit	1	33	Foot Plate Mount Bolts	1
17	Screw	1	34	Foot Plate Mount Nuts	1

DIAGRAM AND PARTS LIST — SWIVEL MOUNT (Item#s 47252 and 47253)



Ref #	Description	Qty	Ref #	Description	Qty
1	End Cap	1	23	Travel Lock Pin	1
2	Vertical Gear	1	24	Travel Lock Pin	1
3	Gear Washer	1	25	Safety Lock Pin	1
4	Horizontal Gear	1	26	Ball Bearing Kit	1
5	Screw Axle Bush	1	27	Screw Axle Kit	1
6	Rotating Mount Plate	1	28	Foot Pedal Release	1
7	Outer Tube	1	29	Middle Tube	1
8	E-Clip	2	30	Grip	1
9	Washer for Release Handle	2	31	Handle Mount Bolt	1
10	Spring for Release Handle	2	32	Handle Mount Nut	1
11	Release Handle	1	33	Main Spring	1
12	Crank	1	34	Inner Tube	1
13	Horizontal Gear Lock Pin	1	35	Roll Pin	1
14	Vertical Gear Lock Pin	1	36	Foot Plate	1
15	Washer for Rotating Mount Plate	1	37	Foot Plate Mount Bolt	1
16	Snap Ring for Rotating Mount Plate	1	38	Foot Plate Mount Nut	1
17	Over Travel Lock Pin	1	39	Jack Mounting Plates	2
18	Over Travel Lock Spring	1	40	Jack Mounting Bolt	4
19	Over Travel Lock Cover	1	41	Jack Mounting Flat Washer	4
20	Cover Bolts	4	42	Jack Mounting lock Washer	4
21	Travel Lock Pin Cover	1	43	Jack Mounting Nut	4
22	Travel Lock Spring	1	44	Jack Handle Shaft Bush	1

For replacement parts and technical questions, please call **1-800-222-5381**.

Limited Warranty

Northern Tool and Equipment Company, Inc. ("We" or "Us") warrants to the original purchaser only ("You" or "Your") that the Ultra-Tow Fast Action Jack product purchased will be free from material defects in both materials and workmanship, normal wear and tear excepted, for a period of one year from date of purchase. The foregoing warranty is valid only if the installation and use of the product is strictly in accordance with product instructions. There are no other warranties, express or implied, including the warranty of merchantability or fitness for a particular purpose. If the product does not comply with this limited warranty, Your sole and exclusive remedy is that We will, at our sole option and within a commercially reasonable time, either replace the product without charge to You or refund the purchase price (less shipping). This limited warranty is not transferable.

Limitations on the Warranty

This limited warranty does not cover: (a) normal wear and tear; (b) damage through abuse, neglect, misuse, or as a result of any accident or in any other manner; (c) damage from misapplication, overloading, or improper installation, including without limitation, welding; (d) improper maintenance and repair; and (e) product alteration in any manner by anyone other than Us, with the sole exception of alterations made pursuant to product instructions and in a workmanlike manner.

Obligations of Purchaser

You must retain Your product purchase receipt to verify date of purchase and that You are the original purchaser. To make a warranty claim, contact Us at 1-800-222-5381, identify the product by make and model number, and follow the claim instructions that will be provided. The product and the purchase receipt must be provided to Us in order to process Your warranty claim. Any returned product that is replaced or refunded by Us becomes our property. You will be responsible for return shipping costs or costs related to Your return visit to a retail store.

Remedy Limits

Product replacement or a refund of the purchase price is Your sole remedy under this limited warranty or any other warranty related to the product. We shall not be liable for: service or labor charges or damage to Your trailer incurred in removing or replacing the product; any damages, including, without limitation, damages to tangible personal property or personal injury, related to Your improper use, installation, or maintenance of the product; or any indirect, incidental or consequential damages of any kind for any reason.

Assumption of Risk

You acknowledge and agree that any use of the product for any purpose other than the specified use(s) stated in the product instructions is at Your own risk.

Governing Law

This limited warranty gives You specific legal rights, and You also may have other rights which vary from state to state. Some states do not allow limitations or exclusions on implied warranties or incidental or consequential damages, so the above limitations may not apply to You. This limited warranty is governed by the laws of the State of Minnesota, without regard to rules pertaining to conflicts of law. The state courts located in Dakota County, Minnesota shall have exclusive jurisdiction for any disputes relating to this warranty.



Distributed by
Northern Tool + Equipment Co., Inc.
Burnsville, MN 55306
NorthernTool.com
Made in China