



A Regal Brand

Northern Tool

Catalog # : 111275.00

Product Type: AC MOTOR

Description: 5HP..3450RPM.56.DP./230V.1PH.60HZ.CONT.MANUAL.40C.1.0SF.RIGID.COMPRESSOR DUTY.P6K34DB5F

Model: P6K34DB5F

Stock: Stock

Quote: Price:

Date: 05/12/2014



A Regal Brand

Northern Tool

Catalog # : 111275.00

Model: P6K34DB5F

Product Type: AC MOTOR

Stock: Stock

Description: 5HP..3450RPM.56.DP./230V.1PH.60HZ.CONT.MANUAL.40C.1.0SF.RIGID.COMPRESSOR DUTY.P6K34DB5F

Engineering Data

Volts	230	Volts	Volts
F.L. Amps	20.8	F.L. Amps	F.L. Amps
S. F Amps	None	S. F Amps	S. F Amps

RPM	3600	Hertz	60	TYPE	KD
HP	5	Duty	CONTINUOUS		
KW	3.73				
Frame	56Y	Serv. Factor	1.0	Phase	1
Max Amb	40	Design	L	Code	E
Insul Class	F	Protection	MANUAL	Therm.Prot.	BEJ34DB
Eff 100%	82.5	Eff 75%		PF	95
UL	No	CSA	Yes	Bearing OPE	6203
CC Number		CE	No	Bearing PE	6205
Load Type		Inverter Type		Speed Range	NONE

Motor Wt.	47 LB	Enclosure	DP	Lubrication	POLYREX EM
Nameplate	004001	Mounting	RIGID	Rotation	SELECTIVE CW
Assembly	NONE	Shaft Dia.	5/8 IN	Ext. Diag.	005056.02
Cust Part No		Outline	028586-850C	Ext. Diag2	
Packaging	B	Outline Dash No		Winding	K632130
Carton Label	Leeson Gen Purpose			GROUP :	2
Iris		Paint	STANDARD	Test Card	01

Form Factor		RMS Amps	Const Torque	Speed Range
Torque		Peak		
AB Code		Peak@DegC		
Resistance				
Connection				

Rework Status	Rework TYPE
---------------	-------------

Hazardous Loc
Explosion Proof
Class
Class

NONE

Temp Op Code
GROUP
GROUP

Brake Motors
FORCE
VDC
ADC

Brake Coil OHMs @25 C

Performance
Torque UOM
Torque
CURRENT (amps)
Efficiency (%)
PowerFactor

Inertia (WK²)

Load Curve Data @60 HzVolts,5Horsepower
Load Amps KW RPM Torque

Eff

PF

Rise By Resis

Frame Rise

Load Curve Data Not Available
Load Curve Data @60HzVolts,5Horsepower
Load Amps KW RPM Torque

Eff

PF

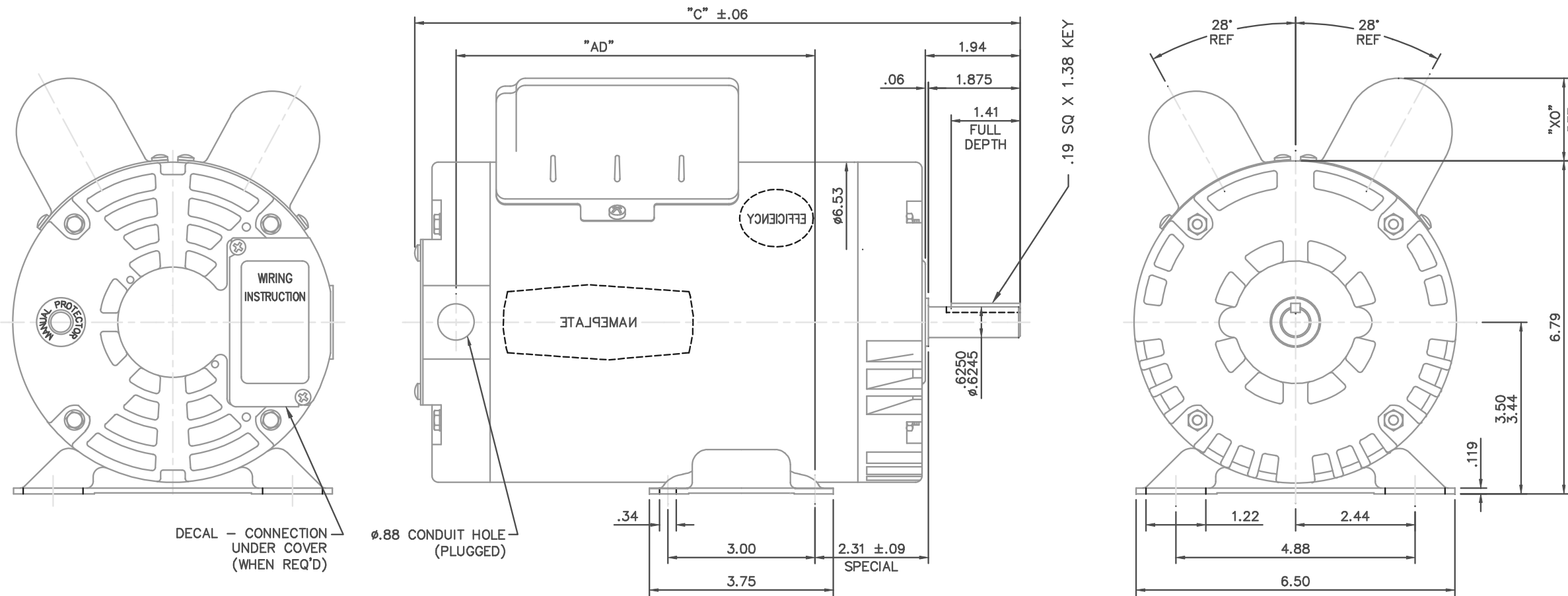
Rise By Resis

Frame Rise

Load Curve Data Not Available

Quote: Price:

Date: 05/12/2014



DASH NO.	"C"	"AD"
650	11.34	6.32
700	11.84	6.82
750	12.34	7.32
800	12.84	7.82
850	13.34	8.32

CAP. DASH	"XO"
A	1.08
B	1.42
C	1.69

NO.	REVISION	BY & DATE
01	ADDED "WIRING INSTRUCTION" DECAL, TO MATCH BOM	BJB 09/13/04

TOLERANCES UNLESS SPECIFIED	
DEC.	INCHES
.X	±.1
.XX	±.03
.XXX	±.005
.XXXX	±.0005
ANG	±1/2°

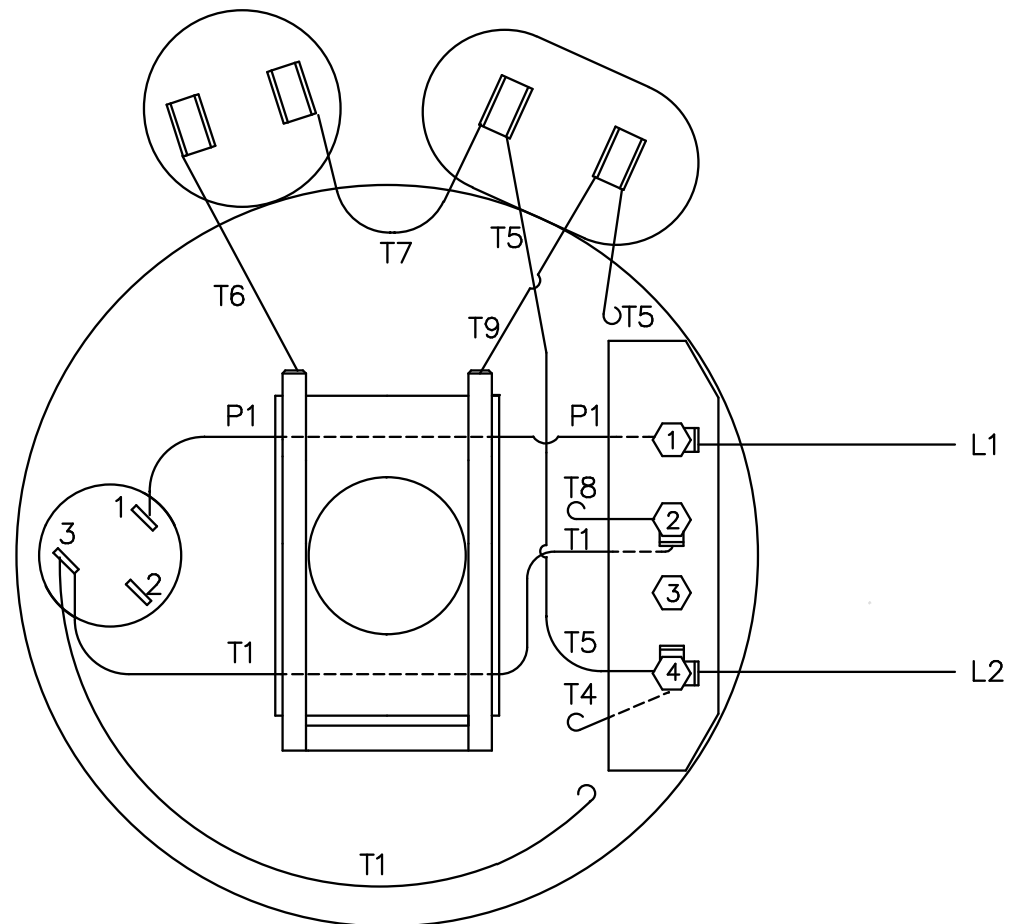
LEESON	ELECTRIC MOTORS GEARMOTORS AND DRIVES
TITLE	OUTLINE- 56 FRAME DRIP PROOF- RIGID
MAT'L	COMPRESSOR DUTY

DRAWN	RDW 05/26/04
CHK	
APPD	SW 05/26/04
SCALE	1=2
REF	032798
FMF	111275.00
PREV	
SIZE	DRAWING NO.
B	028586
REV.	01

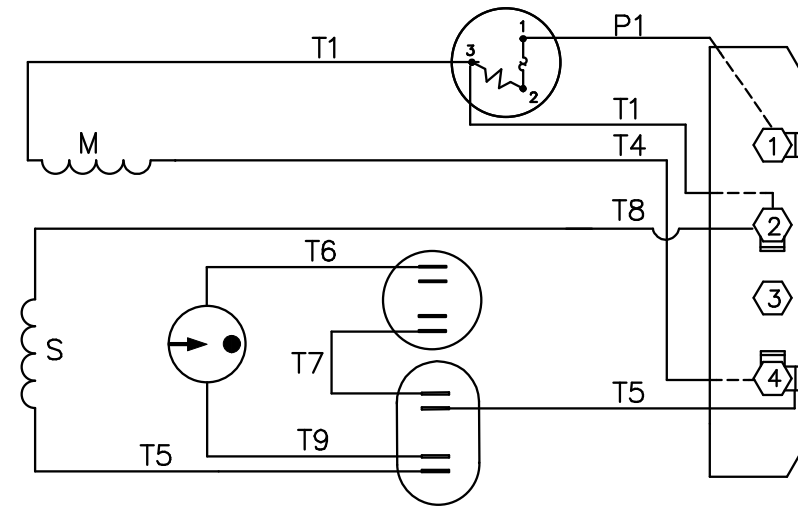
THIS DRAWING IN DESIGN AND DETAIL IS OUR PROPERTY AND MUST NOT BE USED EXCEPT IN CONNECTION WITH OUR WORK ALL RIGHTS OF DESIGN AND INVENTION ARE RESERVED THIS IS AN ELECTRONICALLY GENERATED DOCUMENT - DO NOT SCALE THIS PRINT

005056-02

VIEW FROM OUTSIDE OF MOTOR AT SWITCH END.

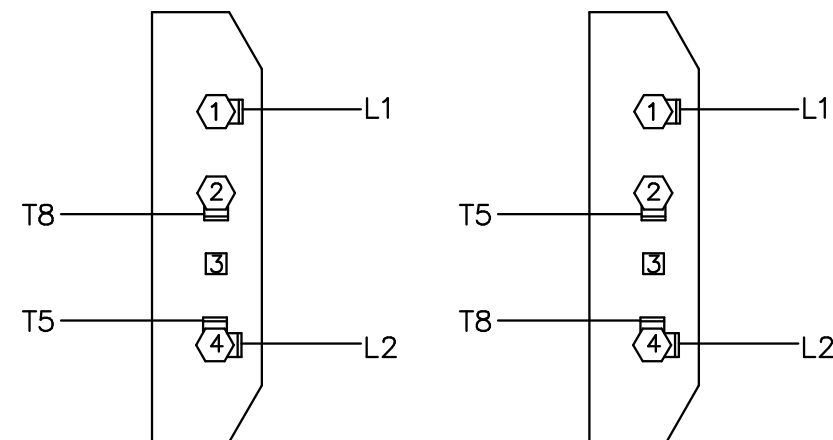


LINE LEADS



C.C.W. L.E. ROTATION

C.W. L.E. ROTATION



				TOLERANCES UNLESS OTHERWISE SPECIFIED		LEESON ELECTRIC CORPORATION	
				DECIMALS			
				.00	± .01	DRAWN JRW 12/12/75	TITLE
				.000	± .005	CH'K'D. TEM	EXTERNAL WIRING DIAGRAM
10	REDRAWN ON CAD	DBT	06/23/97	.0000	± .0005	APPR. 12/17/75	TYPE "K" W/ PROTECTOR
NO.	REVISION	BY	DATE	FRACTIONS	± 1/64	SCALE 1=1	MAT'L. DECAL - 004112 BRF
THIS DRAWING IN DESIGN AND DETAIL IS OUR PROPERTY AND MUST NOT BE USED EXCEPT IN CONNECTION WITH OUR WORK ALL RIGHTS OF DESIGN AND INVENTION ARE RESERVED				ANGLES	± 1/2'	REF.	FINISH
				INCH/MM		FMF A6K34DC1	SIZE A