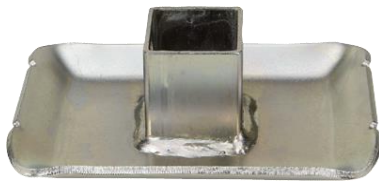




FOOT PLATES AND CASTER WHEELS

OWNER'S MANUAL



Item# 44082



Item# 44085



Item# 44084



WARNING:

Read carefully and understand all **ASSEMBLY AND OPERATION INSTRUCTIONS** before operating. Failure to follow the safety rules and other basic safety precautions may result in serious personal injury.

Item#s 44082, 44083, 44084, 44085

Thank you very much for choosing an Ultra-Tow product! For future reference, please complete the owner's record below:

Model: _____ Purchase Date: _____

Save the receipt, warranty and these instructions. It is important that you read the entire manual to become familiar with this product before you begin using it.

These items are designed for certain applications only. The distributor cannot be responsible for issues arising from modification. We strongly recommend these items not be modified and/or used for any application other than that for which it was designed. If you have any questions relative to a particular application, DO NOT use these items until you have first contacted the distributor to determine if it can or should be performed on the product.

For technical questions please call **1-800-222-5381**.

INTENDED USE

Easy-to-install jack foot or wheels provide convenience and support when teamed with compatible trailer jacks (sold separately).

| Item# | Type | Capacity | Fits | Includes | Size |
|-------|-----------------|-----------|-----------------------------|---------------------|---------------|
| 44082 | Base foot plate | 5000 lbs. | 1.75in.–2.25in. square tube | 3/8in. mounting pin | 8in. x 6in. |
| 44083 | Base foot plate | 2000 lbs. | 2in. round tube | 3/8in. mounting pin | 6in. x 4in. |
| 44085 | Base foot plate | 2000 lbs. | 2.25in. round tube | 3/8in. mounting pin | 6in. x 4in. |
| 44084 | Jack wheel | 1200 lbs. | 2.25in. square tube | 3/8in. linchpin | 6in. diameter |

GENERAL SAFETY RULES



WARNING

- Read and understand all instructions. Failure to follow all instructions listed below may result in serious injury.
- Owner must ensure that the foot plate/caster wheel is installed according to these instructions
- Never position any part of body under this product or supported load.
- Foot plate and/or caster wheel accessories must be removed before towing. These are only to be used when trailer is disconnected and parked.
- Do not allow children to play on or around this foot plate and/or caster wheel while supporting a load.
- Secure the load, vehicle and trailer from rolling when operating jack.
- Never attempt to lift or support loads in excess of the rated strength of the trailer jack, base foot plate, or jack wheel, whichever has the lowest rated strength.
- This foot plate and/or caster wheel is designed for vertical loading. Excessive side forces may cause failure and or injury.
- Do not modify the foot plate and/or caster wheel in any way. Unauthorized modification may impair the function and/or safety and could affect the life of the equipment.

SAVE THESE INSTRUCTIONS

ASSEMBLY

1. When mounting foot plate and/or caster wheel to your trailer jack, it is best to hook up to the tow vehicle to make sure trailer is secure.
2. Slide foot plate or caster up into inner tube of the trailer jack.
3. Line up holes.
4. Slide in and secure pin/clip provided to secure.

MAINTENANCE

- **Maintain your foot plate and/or caster wheel.** It is recommended that the general condition of any foot plate and/or caster wheel be examined before it is used. If foot plate and/or caster wheel is damaged, discontinue use of the foot plate and/or caster wheel.

WARRANTY

3-year limited warranty

ULTRA-TOW[™]

Distributed by
Northern Tool + Equipment Co., Inc.
Burnsville, Minnesota 55306
NorthernTool.com
Made in China