



**Three-Beam Magnetic Torpedo Laser Level
with Base
Model No. 40-6184**



Instruction Manual

Congratulations on your choice of this Magnetic Torpedo Laser Level. We suggest you read this instruction manual thoroughly before using the instrument. Save this instruction manual for future use.

This is a Class IIIa laser tool and is manufactured to comply with CFR 21, parts 1040.10 and 1040.11 as well as international safety rule IEC 285.

Table of Contents

1. Kit Contents
2. Features and Functions
3. Safety Instructions
4. Location/Content of Warning Labels
5. Location of Parts/Components
6. Operating Instructions
7. Using the Product
8. Self-Check and Calibration
9. Technical Specifications
10. Application Demonstrations
11. Care and Handling
12. Product Warranty
13. Product Registration
14. Accessories

1. Kit Contents

<u>Description</u>	<u>Qty.</u>
Magnetic Torpedo Laser Level	1
“AA” Alkaline Batteries	3
Leveling Bracket	1
Instruction Manual with Warranty Card	1
Soft-sided Carrying Case	1

2. Features and Functions

- Simultaneously projects three, square beams for your level, plumb and square applications
- Leveling vials are in four directions: 45°, 90°, 180° and cross check
- Magnetic base attaches onto any ferrous surfaces
- Able to work with a 1/4" - 20 tripod
- Removable base plate can make horizontal leveling more convenient
- V-groove aligns unit with pipes.

3. Safety Instructions

Please read and understand all of the following instructions, prior to using this tool. Failure to do so, may result in bodily injury.

DANGER!

Class IIIa Laser Product

Max. Power Output: $\leq 5\text{mW}$

Wavelength: 640-660nm

**THIS TOOL EMITS LASER RADIATION.
DO NOT STARE INTO BEAM.
AVOID DIRECT EYE EXPOSURE.**



ATTENTION



IMPORTANT

- Read all instructions prior to operating this laser tool. Do not remove any labels from tool.
- Do not stare directly at the laser beam.
- Do not project the laser beam directly into the eyes of others.
- Do not set up laser tool at eye level or operate the tool near a reflective surface as the laser beam could be projected into your eyes or into the eyes of others.
- Do not place the laser tool in a manner that may cause someone to unintentionally look into the laser beam. Serious eye injury may result.
- Do not operate the tool in explosive environments, i.e. in the presence of gases or flammable liquids.
- Keep the laser tool out of the reach of children and other untrained persons.
- Do not attempt to view the laser beam through optical tools such as telescopes as serious eye injury may result.
- Always turn the laser tool off when not in use or left unattended for a period of time.
- Remove the batteries when storing the tool for an extended time (more than 3 months) to avoid damage to the tool should the batteries deteriorate.
- Do not attempt to repair or disassemble the laser tool. If unqualified persons attempt to repair this tool, warranty will be void.
- Use only original AccuLine Pro™ parts and accessories purchased from your AccuLine Pro authorized dealer. Use of non-AccuLine Pro parts and accessories will void warranty.

4. Location/Content of Warning Labels



LASER RADIATION. AVOID DIRECT EYE EXPOSURE.

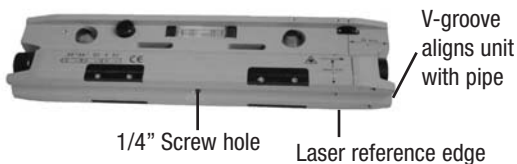
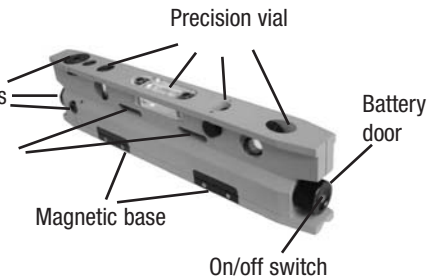
MAXIMUM OUTPUT POWER: < 5mW @ 640-660nm
CLASS IIIa LASER PRODUCT. THIS PRODUCT COMPLIES WITH THE APPLICABLE
REQUIREMENTS OF 21CFR PARTS 1040.10 & 1040.11.

5. Location of Part/Components

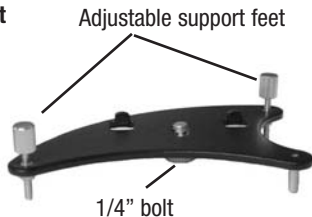
3 beams: plumb,
level & square

Laser output windows

Strap raceway (strap
not included)



Leveling Bracket



V-Groove:

Use the V-groove to align on pipes up to 10" (254 mm) in diameter.

1/4"-20 Tripod Mount:

Use the threaded hole in the base to mount to a camera tripod.

Strap Raceways:

Use straps (not included) to fasten to pipes, studs, etc.

Magnetic Base:

Use the magnetic base to lock on to metal studs or pipes.

6. Operating Instructions

IMPORTANT: It is the responsibility of the user to verify the calibration of the instrument before each use.

Battery Installation

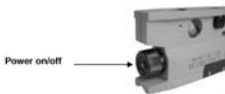
Turn on/off button in the counter-clockwise direction and completely unscrew the switch. This will provide you access to the battery compartment. Insert all three batteries by following the polarity on the outside of the unit. Return the switch to the original position.

Note: Used (discharged) batteries are hazardous waste and should be disposed of properly.



7. Using the Product

With the press of the red power-on/off button, the instrument will simultaneously project 3 laser dots through the laser output windows, and with one more press of the power-on/off button, the laser dots will turn off. When the laser dot appears dim, it is time to replace the batteries.

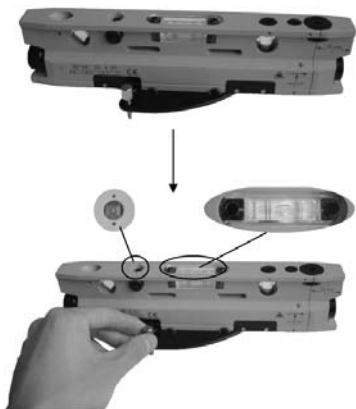


Laser output mode is shown as follows:



Horizontal Usage with Base

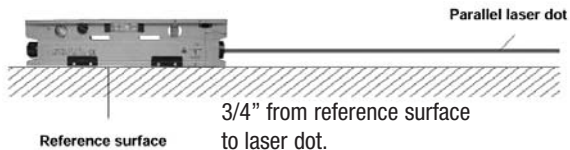
Connect the laser level with the leveling bracket



Center the bubble by adjusting the support feet

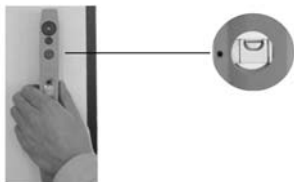
Adjust the support feet to center the bubble. The laser level is now level in the horizontal plane.

Project horizontal laser dot



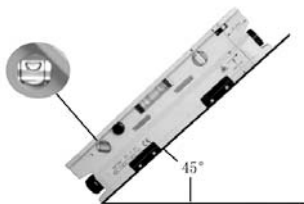
Vertical Usage

Center the plumb vial as shown in the illustration



Angle Usage

Center the 45° vial as shown in the illustration.



Magnetic base usage



Attached on any ferrous surface

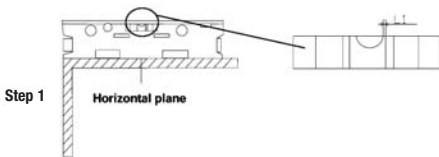


Attached on iron pipe

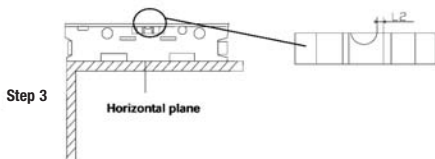
8. Self-Check and Calibration

Horizontal bubble vial check

Put the laser level on a smooth and horizontal plane, and then check according to steps as follows:



Step 2 Rotate unit 180 degrees.

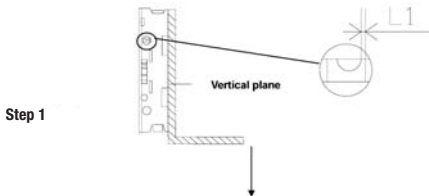


If the laser level is in horizontal, the bubble vial position should be as follows:

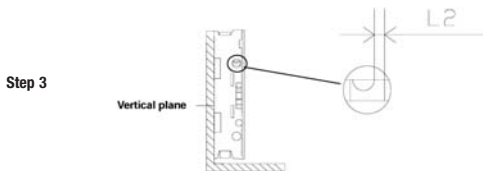


Vertical bubble vial check

Put the laser level on a smooth and vertical plane, like fixed and firm window glass, and then check according to steps as follow:



Step 2 Rotate unit 180 degrees.



If the laser level is in vertical, the bubble vial position should be as follows:



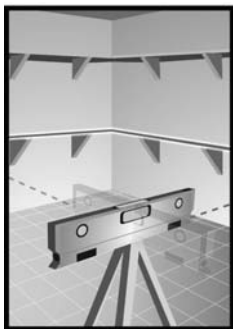
9. Technical Specifications

Laser Wavelength	650nm \pm 10
Laser Classification	Class IIIa
Maximum Power Output	\leq 5mW
Accuracy	\pm 1/8"/50 ft. (\pm 1mm/5m)
Interior Range	Up to 100 ft. (30m) depending upon light conditions
Power Supply	3 "AA" alkaline batteries
Battery Life	Approx. battery life 70 hours continuous use
Dimensions	9 1/2" x 2 1/8" x 1" (242 x 56 x 25.4mm)
Weight	1.653 lbs. (0.75 Kg)
Working Temperature	14°F to 113°F (-10°C to +45°C)
Center Screw Thread	1/4" – 20

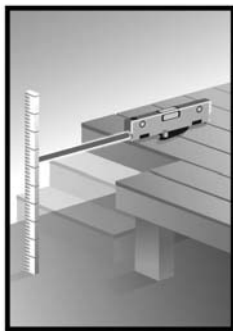
10. Application Demonstrations



Squaring (window frame)



Leveling (cabinets)



Point (deck)

11. Care and Handling

- This laser unit is a precision tool that must be handled with care.
- Avoid exposing unit to shock vibrations and extreme temperatures.
- Before moving or transporting the unit, make sure that the unit is turned off.
- Remove the batteries when storing the unit for an extended time (more than three months) to avoid damage to the unit should the batteries deteriorate.
- Always store the unit in its case when not in use.
- Avoid getting the unit wet.
- Keep the laser unit dry and clean, especially the laser output window. Remove any moisture or dirt with a soft, dry cloth.
- Do not use harsh chemicals, strong detergents or cleaning solvents to clean the laser unit.

12. Product Warranty

Johnson Level & Tool offers a one year limited warranty on each its products. You can obtain a copy of the limited warranty for a Johnson Level & Tool product by contacting Johnson Level & Tool's Customer Service Department as provided below or by visiting us online at www.johnsonlevel.com. The limited warranty for each product contains various limitations and exclusions.

Do not return this product to the store/retailer or place of purchase. Required repair/calibration must be done by an authorized AccuLine Pro™ service center or Johnson Level & Tool's limited warranty, if applicable, will be void and there will be NO WARRANTY. Contact our Customer Service Department to obtain a Return Material

Authorization (RMA) number for return to an authorized service center. Proof of purchase is required.

NOTE: The user is responsible for the proper use and care of the product.

It is the responsibility of the user to verify the calibration of the instrument before each use.

For further assistance, or if you experience problems with this product that are not addressed in this instruction manual, please contact our Customer Service Department.

In the U.S., contact Johnson Level & Tool's Customer Service Department at 800-563-8553.

In Canada, contact Johnson Level & Tool's Customer Service Department at 800-346-6682.

13. Product Registration

Enclosed with this instruction manual you will find a warranty card to be completed for product warranty registration. Product warranty registration can also be completed online at our web site www.johnsonlevel.com. You will need to locate the serial number for your product that is located at the side of the torpedo level. **PLEASE NOTE THAT IN ADDITION TO ANY OTHER LIMITATIONS OR CONDITIONS OF JOHNSON LEVEL & TOOL'S LIMITED WARRANTY, JOHNSON LEVEL & TOOL MUST HAVE RECEIVED YOUR PROPERLY COMPLETED WARRANTY CARD WITHIN 30 DAYS OF YOUR PURCHASE OF THE PRODUCT OR ANY LIMITED WARRANTY THAT MAY APPLY SHALL NOT APPLY AND THERE SHALL BE NO WARRANTY.**

14. Accessories

AccuLine Pro™ accessories are available for purchase through authorized AccuLine Pro dealers. Use of non-AccuLine Pro accessories will void any applicable limited warranty and there will be NO WARRANTY. If you need any assistance in locating any accessories, please contact our Customer Service Department.

In the U.S., contact Johnson Level & Tool's Customer Service Department at 800-563-8553.

In Canada, contact Johnson Level & Tool's Customer Service Department at 800-346-6682.