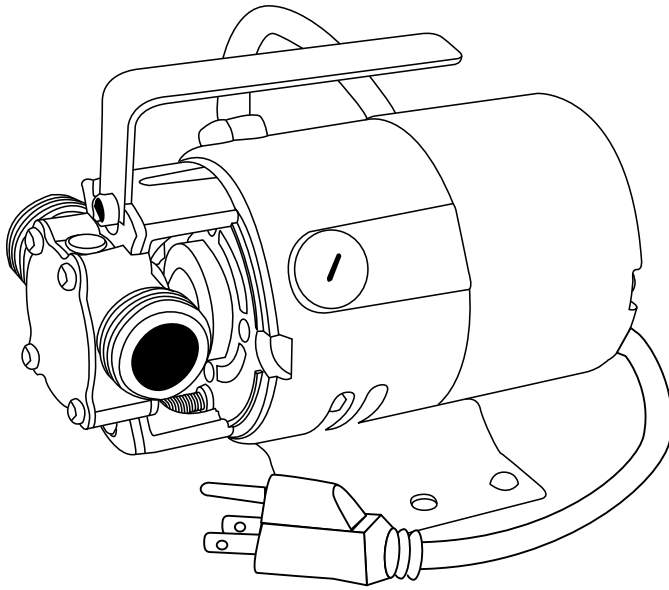


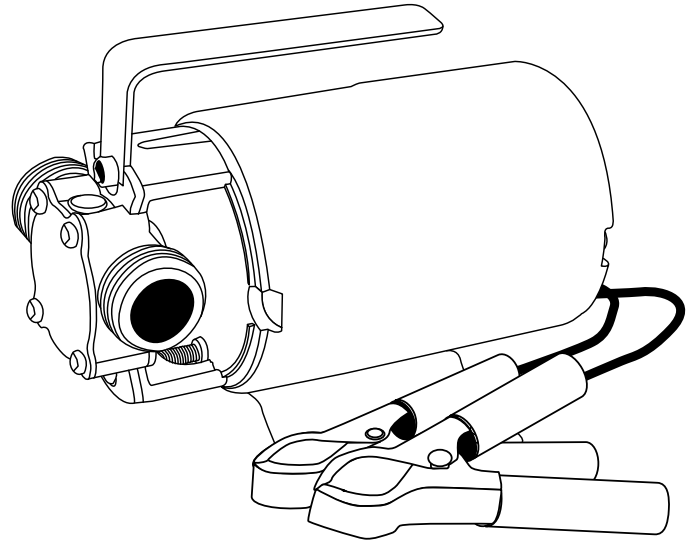
GARDEN HOSE UTILITY PUMP

MODEL #HPP360, HPP12V, 473707

FW0269
0313
SUPERSEDES
1012



MODEL #HPP360, 473707



MODEL #HPP12V

ATTACH YOUR RECEIPT HERE

Purchase Date _____

SAFETY INFORMATION

Please read and understand this entire manual before attempting to assemble, operate or install the product.

- **NOTE:** Pumps with the “UL” Mark and pumps with the “US” mark are tested to UL Standard UL778. CSA certified pumps are certified to CSA Standard C22.2 No. 108. (CUS.)



Questions, problems, missing parts? Before returning to your retailer, call our customer service department at 1-800-724-5044.

023911 B

SAFETY INFORMATION

DANGER

ELECTRICAL SHOCK HAZARD.

This pump is non-submersible. Keep the motor dry at all times. Do not wash the motor. Do not immerse. Protect the motor from wet weather. Do not allow any part of cord or receptacle ends to sit in water or in damp locations. Failure to follow these warnings will result in death or serious injury and/or property damage.

FIRE/EXPLOSION HAZARD.

Pump only clear water. Do not pump flammable or explosive fluids such as gasoline, fuel oil, kerosene, etc. Do not use in a flammable and/or explosive atmosphere. Failure to follow these warnings could result in death or serious injury and/or property damage.

RISK OF ELECTRIC SHOCK.

These pumps have not been investigated for use in swimming pool areas.

WARNING

ELECTRICAL SHOCK ALERT.

Before installing this product, have the electrical circuit checked by an electrician to ensure proper grounding.

ELECTRICAL SHOCK ALERT.

All wiring should be performed by a qualified electrician.

ELECTRICAL SHOCK ALERT.

Connect Models HPP360 and 473707 to a properly-grounded 115 volt circuit equipped with a Ground fault Circuit Interrupter (GFCI) device.

ELECTRICAL SHOCK ALERT.

Do not handle pump or pump motor with wet hands or when standing on a wet or damp surface or in water.

ELECTRICAL SHOCK ALERT.

Protect pump from extreme heat, cold and humidity. This unit is not waterproof and is not intended to be used in showers, saunas, or other potentially wet locations. The motor is designed to be used in a clean, dry location with access to an adequate supply of cooling air. Ambient temperature around the motor should not exceed 104°F (40°C). For outdoor installations, motor must be protected by a cover that does not block airflow to and around the motor. This unit is not weatherproof, nor is it able to be submersed in water or any other liquid. Do not use in or near swimming pool or spa.

ELECTRICAL SHOCK ALERT.

BE CERTAIN the pump power source is disconnected before installing or servicing pump.

ELECTRICAL SHOCK ALERT.

In any installations where property damage and/or personal injury might result from an inoperative or leaking pump due to power outages, discharge line blockage, or any other reason, a backup system(s) should be used. In order to safely use this product, familiarize yourself with this pump.

ELECTRICAL SHOCK ALERT.

Protect electrical cord from sharp objects, hot surfaces, oil and chemicals. Avoid kinking the cord. Replace or repair damaged or worn cords immediately.

PERSONAL INJURY ALERT.

Models HPP360 and 473707 are equipped with an automatic resetting thermal protector and may restart unexpectedly. Refer to troubleshooting.

CHEMICAL ALERT.

This product contains chemicals known to the state of California to cause cancer and birth defects or other reproductive harm.

SAFETY INFORMATION

CAUTION

PERSONAL INJURY OR PRODUCT DAMAGE MAY RESULT

Models HPP360 and 473707 operate on 115 volts. Make certain that the power source conforms to the requirements of your equipment.

PRODUCT DAMAGE MAY RESULT

This pump is not designed to handle salt water, brine, laundry discharge or any other liquid that may contain caustic chemicals and/or foreign materials.

PRODUCT DAMAGE MAY RESULT

The maximum temperature of the pumped liquid must not exceed 130°F (54°C). The minimum allowable temperature is 40°F (4°C).

PRODUCT DAMAGE MAY RESULT

Be sure the water source and piping are clear of sand, dirt and scale. Debris will clog the pump and void the warranty.

PRODUCT DAMAGE MAY RESULT

Failure to protect the pump and piping from freezing will cause damage and void the warranty.

PRODUCT DAMAGE MAY RESULT

Do not run pump dry. Impeller and seal damage will result.

PERSONAL INJURY MAY RESULT

Release all pressure within the system before servicing any component. Provide a means of pressure relief for installations where the discharge line can be shut off or obstructed.

PROPERTY DAMAGE MAY RESULT

Drain all liquids from the system before servicing.

PERSONAL INJURY AND/OR PROPERTY DAMAGE MAY RESULT

Secure the discharge line before starting the pump. An unsecured discharge line will whip, possibly causing personal injury and/or property damage.

PERSONAL INJURY MAY RESULT

Do not touch motor while operating pump. Motor is designed to operate at high temperatures.

PACKAGE CONTENTS

Description	Quantity
Pump 115V or 12V	1
Inlet Hose	1
Puddle Vac	1

MODEL #HPP360 / 473707

MODEL #HPP12V

PREPARATION

Before beginning installation of product, make sure all parts are present. Compare parts with package contents list. If any part is missing or damaged, do not attempt to assemble the product.

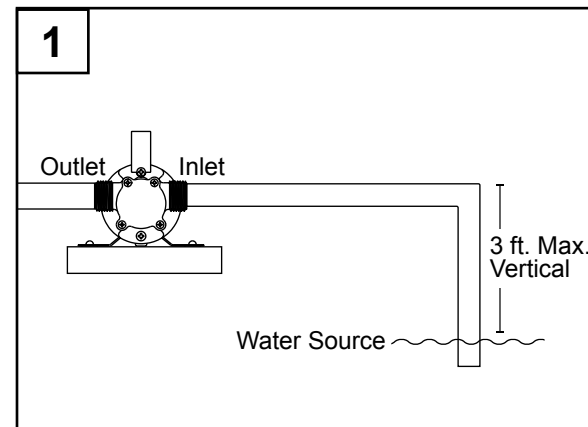
Estimated Installation Time: 5 minutes

No tools required for assembly.

INSTALLATION INSTRUCTIONS

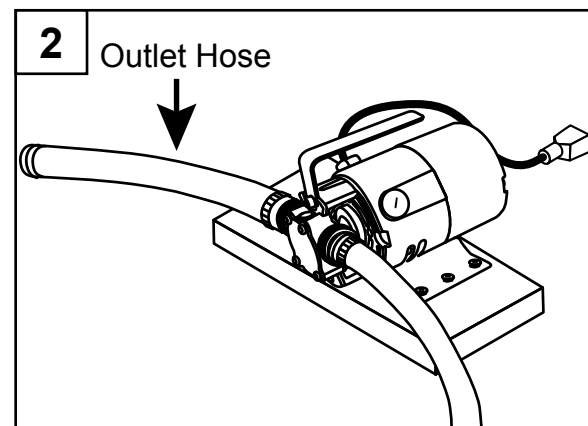
NOTE: Pump depends on the liquid flowing through it for lubrication. **DO NOT RUN THE PUMP DRY!**

1. Mount pump solidly on a stable platform. Pump should be located so that the water source is within reach of supplied 6 ft. inlet hose.



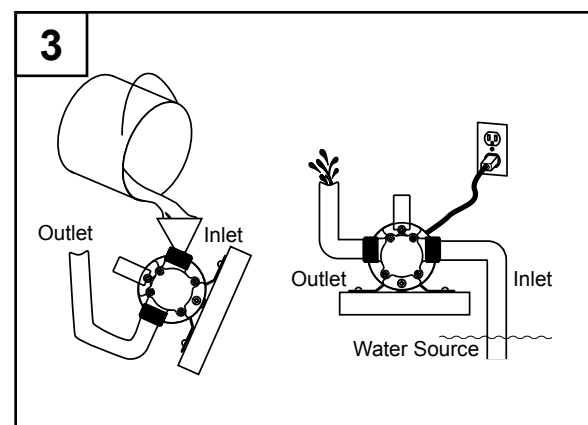
2. Check the washer in the inlet fitting of pump to make sure it is air tight. If this leaks, pump will not operate. Install inlet hose on the inlet side of pump. Make sure all connections are tight.

Install a 5/8 in. outlet hose (not included) on the outlet side of pump. Outlet hose should be as short as possible and no longer than 25 ft. The inlet hose must reach below the surface of the water and the outlet hose must be kept above water.



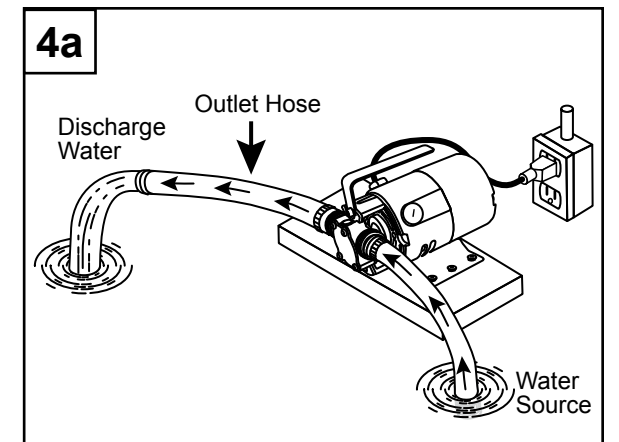
PRIMING AND STARTUP

3. To prime pump, fill the pump cavity through inlet to wet impeller. Connect supplied 6 ft. inlet hose and submerge below surface of water. Turn on pump.

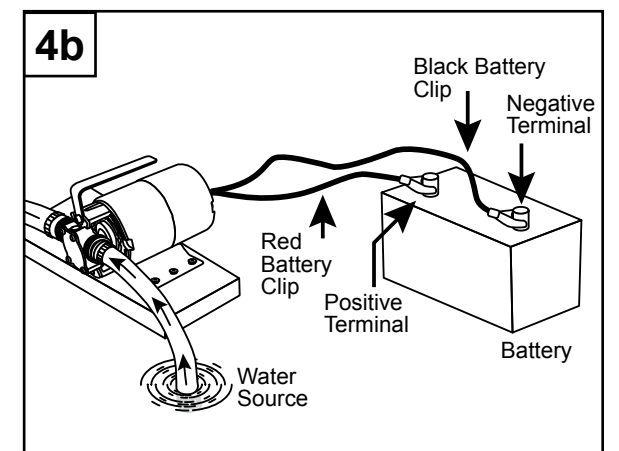


PRIMING AND STARTUP

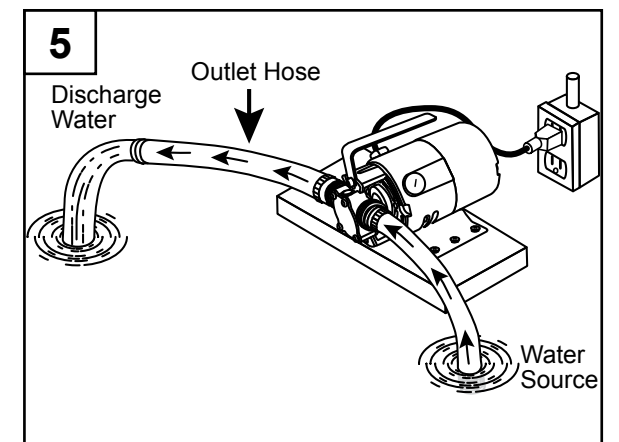
- 4a. For models HPP360 and 473707, plug the cord into a 3-wire, 115 volt, 60Hz grounded A/C outlet protected by a ground-fault circuit-interruptor. Pump will deliver 350 gallons per hour with an unrestricted discharge line. If the discharge line is restricted or raised, pump will pump less water.



- 4b. For model HPP12V, attach red battery clip to positive terminal and black battery clip to negative terminal of a fully charged battery.

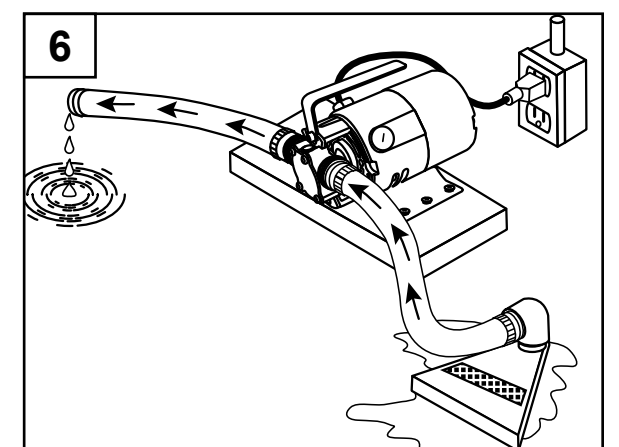


5. To reduce friction, do not coil or kink the hoses. When pumping from a well or stream, raise the inlet hose a few inches off the bottom to avoid pumping in debris which can damage the pump.



6. This unit is shipped with a puddle vac accessory which allows it to remove water from flat surfaces. After attaching inlet hose in step 2, screw the puddle vac onto the end of the inlet hose and place it on the surface to be pumped.

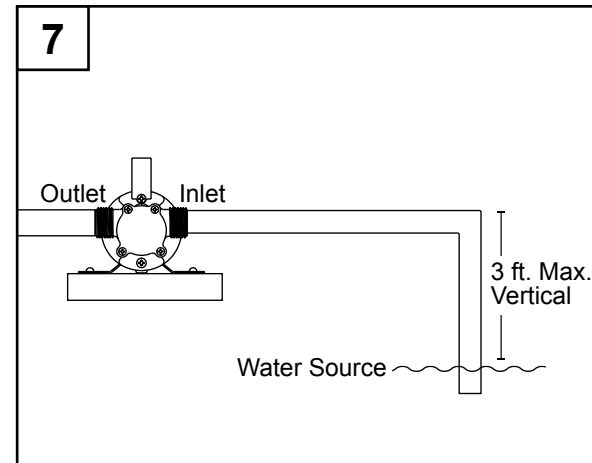
CAUTION: Before water is completely gone, unplug the pump. **DO NOT RUN PUMP DRY!**



INSTALLATION INSTRUCTIONS

7. If pump does not start to pump water within 30 seconds, unplug and re-check the installation and plumbing as follows.

- Check to be sure pump is located so that the water source is within reach of supplied 6 ft. inlet hose.
- Check to be sure all inlet connections are air and water-tight and inlet hose is as short as possible.
- Check to be sure inlet hose is below the surface of the water source.
- Check to be sure the outlet hose is less than 25 ft. in length and is above the surface of the outlet water.



CARE AND MAINTENANCE

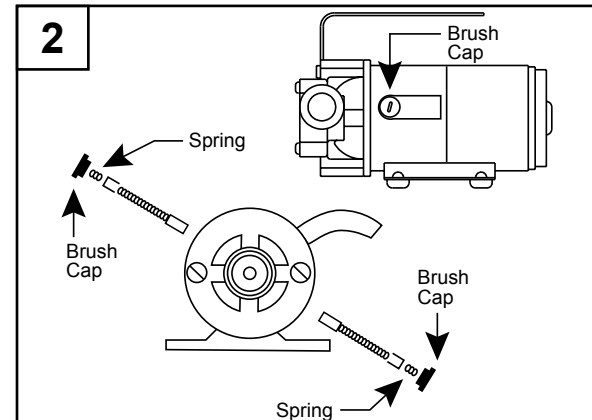
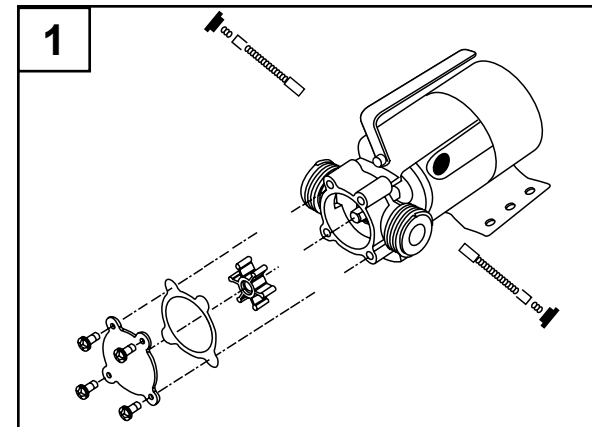
1. Always drain pump when not in use. If pump is going to be out of use for a month or longer, flush with fresh water and remove face plate cover. Remove impeller, clean inside pump cavity and apply a generous coating of petroleum jelly (not included) to the inside of the cavity and the impeller before replacing the impeller. The pump should be checked frequently for proper operation. If anything has changed since the pump was new, it should be repaired or replaced.

CAUTION: Only qualified electricians should repair this unit. Improper repair and/or assembly can cause electrical shock hazard.

2. How to Replace Brushes (115V pump only)

NOTE: Motor brushes (not included) are normal wear items and must be replaced periodically.

- Be sure pump is disconnected from power source.
- Unscrew brush cap located along the side of the motor. Remove brush and spring and spring cover by pulling them straight out of the brush holder.
- Install new brush and spring assembly (not included), keeping the new brush curvature aligned the same as the previous brush.
- Replace cap.

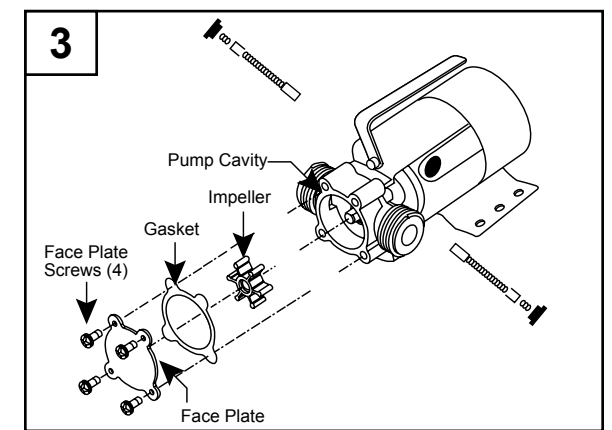


CARE AND MAINTENANCE

3. How to Replace Impeller

NOTE: Replace the impeller when it has been worn or damaged by foreign objects, improper liquid or running dry.

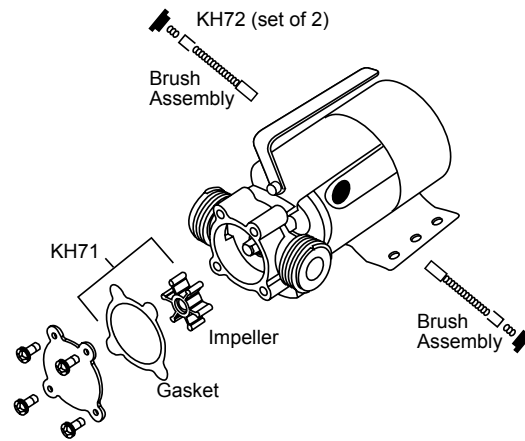
- Remove four face plate screws, face plate and gasket.
- Remove damaged or worn impeller.
- Clean the inside of the pump cavity and remove any foreign materials that might prevent the impeller from moving easily.
- Apply petroleum jelly to the inside of the pump cavity and the outside of the new impeller (not included).
- Align the flat on the new impeller with the flat on the motor shaft. Push into place while twisting blades in a clockwise direction.
- Place new gasket on pump cavity face, align holes and replace cover. Tighten all four screws evenly and snugly.



TROUBLESHOOTING

Problem	Possible Cause	Corrective Action
Pump will not prime or retain prime after operating.	<ol style="list-style-type: none"> 1. Pump won't prime. 2. Suction lift too high. 3. Hose kinked. 4. Hose fitting not tight on inlet. 5. Air leak in suction hose. 	<ol style="list-style-type: none"> 1. See priming instructions on page 6. 2. Move pump closer to water source. 3. Straighten hose. 4. Tighten fitting. 5. Repair or replace hose.
Pump runs but no water is discharged.	<ol style="list-style-type: none"> 1. Hose kinked. 2. Pump is not primed. 3. Defective impeller. 4. Suction lift too high. 5. Discharge height too great. 6. Clogged inlet. 	<ol style="list-style-type: none"> 1. Straighten hose. 2. See priming instructions on page 6. 3. Replace impeller. 4. Move pump closer to water source. 5. Reduce discharge height. 6. Clean inlet.
Motor runs too hot.	<ol style="list-style-type: none"> 1. Voltage incorrect. 2. Restricted discharge hose. 3. Impeller damaged. 4. Liquid too viscous. 5. Plugged or kinked discharge. 6. Insufficient air flow on motor. 	<ol style="list-style-type: none"> 1. Connect to 115 volt outlet. 2. Increase hose diameter to 3/4 in. 3. Replace impeller. 4. Reduce viscosity of liquid. 5. Clean and straighten hose. 6. Make sure ample fresh air is available at the motor.
Flow rate is low.	<ol style="list-style-type: none"> 1. Hose kinked. 2. Clogged impeller. 3. Worn impeller. 4. Excessive length of hose. 	<ol style="list-style-type: none"> 1. Straighten hose. 2. Clear obstruction. 3. Replace impeller. 4. Reduce length of inlet and outlet hose.
Pump will not run.	<ol style="list-style-type: none"> 1. No power. 2. Impeller jammed. 3. Motor overheated. 	<ol style="list-style-type: none"> 1. Verify that unit is plugged into 115 volt outlet. 2. Clean pump cavity and impeller. 3. Motor has automatic thermal protector. Wait fifteen minutes for motor to cool.

REPLACEMENT PARTS



Part #	Description
KH71	Gasket & impeller kit for HPP360, 473707 & HPP12V
KH72	Brush kit for HPP360, 473707
023754	Pump Head Kit (Includes face plate, seal, impeller and pump head)

LIMITED WARRANTY

This product is warranted for one year from the date of purchase or two years from the date of manufacture, whichever occurs first. Subject to the conditions hereinafter set forth, the manufacturer will repair or replace to the original consumer, any portion of the product which proves defective due to defective materials or workmanship. To obtain warranty service, contact the dealer from whom the product was purchased. The manufacturer retains the sole right and option to determine whether to repair or replace defective equipment, parts or components. Damage due to conditions beyond the control of the manufacturer is not covered by this warranty.

THIS WARRANTY WILL NOT APPLY: (a) To defects or malfunctions resulting from failure to properly install, operate or maintain the unit in accordance with printed instructions provided; (b) to failures resulting from abuse, accident or negligence or use of inappropriate chemicals or additives in the water; (c) to normal maintenance services and the parts used in connection with such service; (d) to units which are not installed in accordance with normal applicable local codes, ordinances and good trade practices; and (e) the unit is used for purposes other than for what it was designed and manufactured.

RETURN OF WARRANTED COMPONENTS: Any item to be repaired or replaced under this warranty must be returned to the manufacturer at Kendallville, Indiana or such other place as the manufacturer may designate, freight prepaid.

THE WARRANTY PROVIDED HEREIN IS IN LIEU OF ALL OTHER EXPRESS WARRANTIES, AND MAY NOT BE EXTENDED OR MODIFIED BY ANYONE. ANY IMPLIED WARRANTIES SHALL BE LIMITED TO THE PERIOD OF THE LIMITED WARRANTY AND THEREAFTER ALL SUCH IMPLIED WARRANTIES ARE DISCLAIMED AND EXCLUDED. THE MANUFACTURER SHALL NOT, UNDER ANY CIRCUMSTANCES, BE LIABLE FOR INCIDENTAL, CONSEQUENTIAL OR SPECIAL DAMAGES, SUCH AS, BUT NOT LIMITED TO DAMAGE TO, OR LOSS OF, OTHER PROPERTY OR EQUIPMENT, LOSS OF PROFITS, INCONVENIENCE, OR OTHER INCIDENTAL OR CONSEQUENTIAL DAMAGES OF ANY TYPE OR NATURE. THE LIABILITY OF THE MANUFACTURER SHALL NOT EXCEED THE PRICE OF THE PRODUCT UPON WHICH SUCH LIABILITY IS BASED.

This warranty gives you specific legal rights, and you may have other rights which vary from state to state. Some states do not allow limitations on duration of implied warranties or exclusion of incidental or consequential damages, so the above limitations may not apply to you.

WARRANTY VALID IN CANADA AND MEXICO.