

GENERAL PUMP *A member of the Interpump Group*

DG5010/W

Rear Inlet Spray Gun

**SPECIFICATIONS**

Part Number:	DG5010 / DG5010W	
Maximum Volume:	10.5 GPM	
Maximum Pressure:	5000 PSI	
Maximum Temperature:	320° F	
Port Sizes:	Inlet	3/8" NPT-F
	Outlet	1/4" NPT-F
Dimensions:	9.27" x 5.67" x 1.44"	
Weight:	1.4 lbs.	
Material:	Brass, Stainless Steel, Plastic, Viton	
REPAIR KIT - DG5010	2100249	
REPAIR KIT - DG5010W	2100277	

FEATURES

- All flow passages designed for minimum pressure drop - maximum flow
- Fluorocarbon seals for maximum high temperature performance
- Large comfortable hand grip to accommodate work gloves
- Additional venting for excellent high temperature performance
- Durable glass-filled housing
- Trigger made from Zytel (high tech nylon)



General Pump
is a member of
the Interpump Group

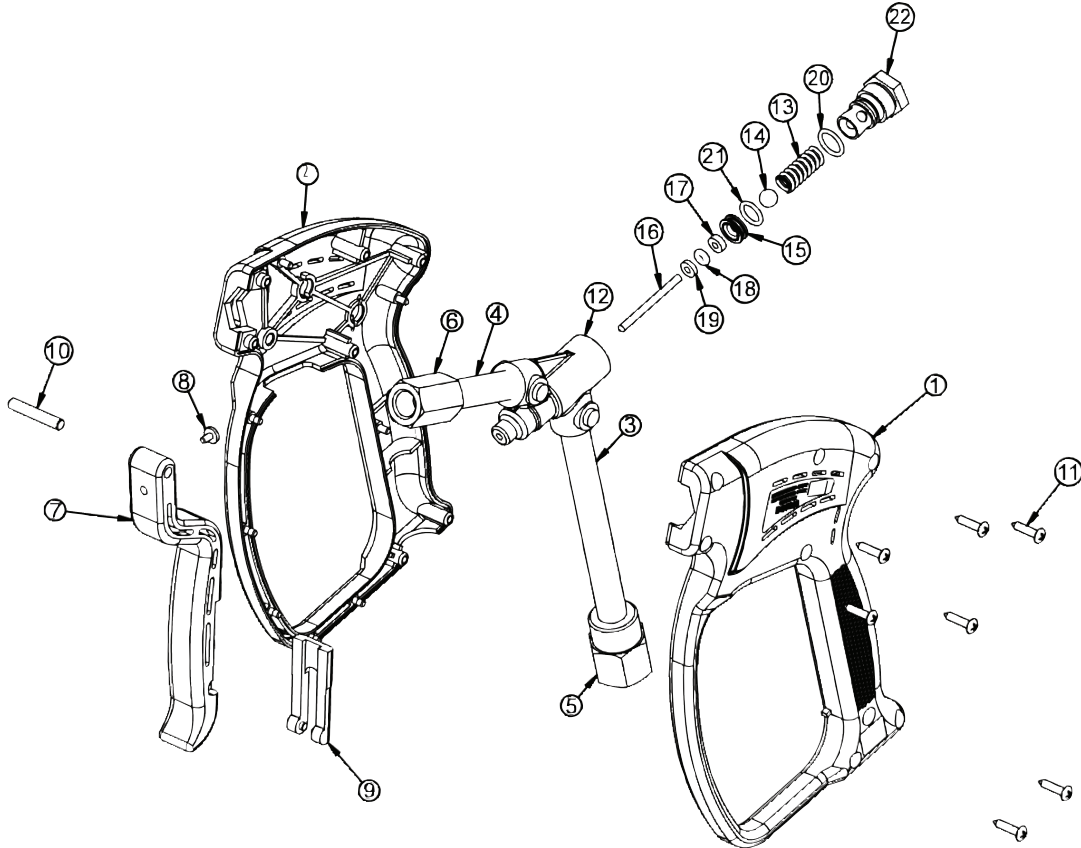


DG5010/W

Rear Inlet Spray Gun

GENERAL PUMP *A member of the Interpump Group*

PARTS LIST

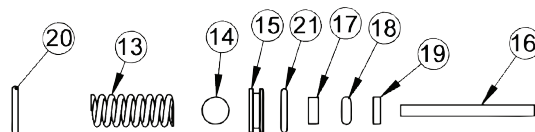


Item	Part No.	Description	Qty.
1	2660095	Housing, Gun	1
2	2660146	Housing, Gun	1
3	2550048	Tube, Inlet	1
4	2550049	Tube, Outlet	1
5	2510003	Fitting, Inlet, Gun	1
6	2510081	Fitting, Outlet	1
7	2660096	Trigger (DG5010)	1
	2660108	Trigger (DG5010W)	1
8	2520010	Striker	1
9	2660026	Trigger, Lock	1
10	2510155	Pin, Trigger	1
11	2200065	Screw	7
12	2452011	Forging, Gun	1
13*	2720001	Spring	1

Item	Part No.	Description	Qty.
14*	2520004	Ball	1
15*	2520085	Seat, Gun (DG5010)	1
	2520092	Weep Seat, Gun (DG5010W)	1
16*	2520084	Pin, Forging	1
17*	2510004	Washer, Brass	1
18*	2701048	O-ring	1
19*	2710018	Washer, Teflon	1
20*	2701049	O-ring	1
21*	2701045	O-ring	1
22	2510156	Plug, Gun	1

- * 2100249 Repair Kit - DG5010
- * 2100277 Repair Kit - DG5010W

* Repair Kit 2100249



Ref 300673 Rev D
10-10

GENERAL PUMP • 1174 Northland Drive • Mendota Heights, MN 55120
Phone: (651)686-2199 • Fax: (800)535-1745 • email: sales@gpcompanies.com • www.generalpump.com

