

DG4000 / W

Rear Inlet Spray Gun



SPECIFICATIONS

Part Number:	DG4000/DG4000W	
Maximum Volume:	8.0 GPM	
Maximum Pressure:	4000 PSI	
Maximum Temperature:	250° F	
Port Sizes:	Inlet	3/8" NPT-F
	Outlet	1/4" NPT-F
Dimensions:	9.5" x 5.25" x 1.2"	
Weight:	1.0 lbs.	
Material:	Brass, Stainless Steel, Plastic	
REPAIR KIT - DG4000	2100261	
REPAIR KIT - DG4000W	2100305	

FEATURES

- Economic design with brass inlet and outlet
- All flow passages designed for minimum pressure drop - maximum flow
- Large comfortable hand grip to accommodate work gloves
- Additional venting for excellent high temperature performance
- Durable glass-filled housing
- Trigger made from 30% glass filled Nylon 6.6

Ref 300753 Rev B
10-11



General Pump
is a member of
the Interpump Group

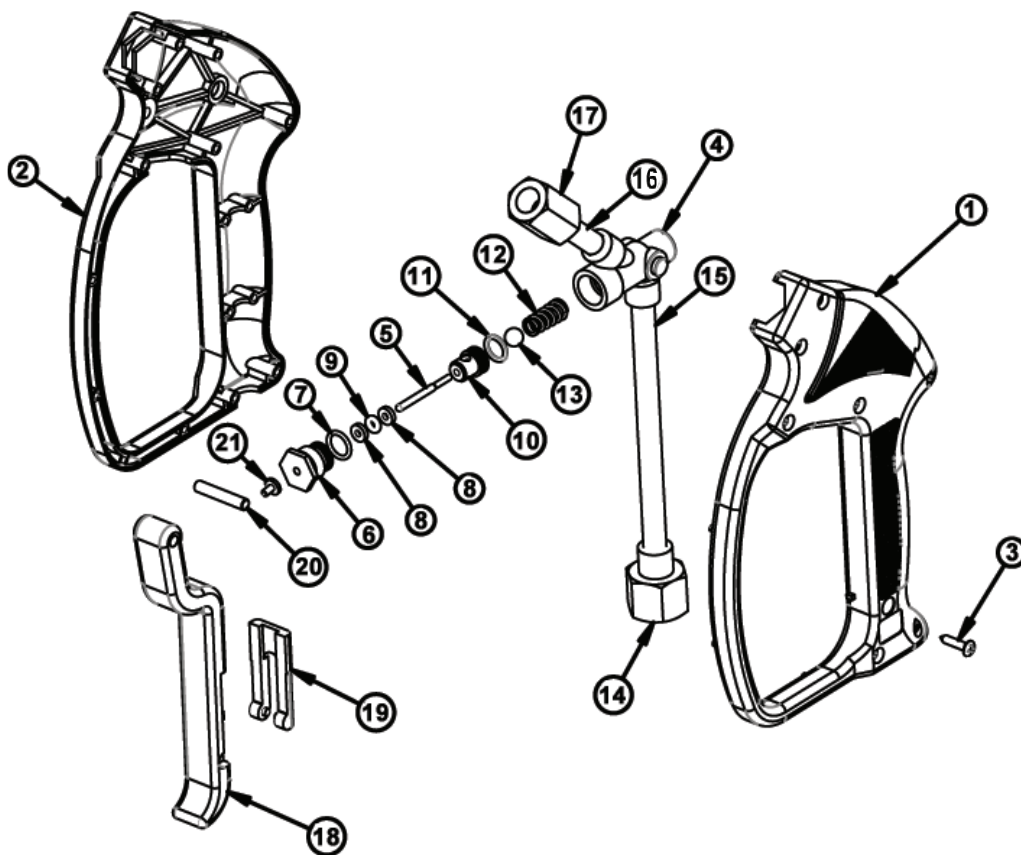


DG4000 / W

Rear Inlet Spray Gun

GENERAL PUMP *A member of the Interpump Group*

PARTS LIST



Item	Part No.	Description	Qty.	Item	Part No.	Description	Qty.
1	2660117	Housing, Gun	1	13*	2520004	Ball	1
2	2660118	Housing, Gun	1	14	2510026	Fitting, Inlet, 3/8 NPT-F	1
3	2550065	Screw	7	15	2520005	Tube, Inlet	1
4	2452012	Forging	1	16	2550062	Tube, Outlet	1
5*	2520063	Pin, Gun	1	17	2510095	Fitting, Outlet	1
6	2510008	Plug	1	18	2660111	Trigger (DG4000)	1
7*	2701013	O-ring	1		2660206	Trigger (DG4000W)	1
8*	2660029	Ring, Backup	2	19	2660026	Trigger, Lock	1
9*	2701048	O-ring	1	20	2520012	Pin, Trigger	1
10*	2520006	Seat (DG4000)	1	21	2520010	Striker	1
	2520207	Seat (DG4000W)	1				
11*	2701002	O-ring	1				
12*	2720002	Spring	1				
				*	2100261	Repair Kit - DG4000	
				*	2100305	Repair Kit - DG4000W	

Ref 300753 Rev B
10-11

GENERAL PUMP • 1174 Northland Drive • Mendota Heights, MN 55120
Phone: 651.686.2199 • Fax: 800.535.1745 • email: sales@gpcompanies.com • www.generalpump.com

