




36" METAL BENDER

OWNER'S MANUAL



 **WARNING:** Read carefully and understand all **INSTRUCTIONS** before operating. Failure to follow the safety rules and other basic safety precautions may result in serious personal injury.

Item #426282

INTENDED USE

Heavy-duty metal bender easily bends up to 12-gauge sheet metal. Quickly adjusts for different sheet metal thickness.

TECHNICAL SPECIFICATIONS & PACKING LIST

| Item | Description |
|--------------------|-------------|
| Metal Bender | 36" |
| Stand | Included |
| Maximum Thickness | 12 gauge |
| Minimum Bend Angle | 0° |
| Maximum Bend Angle | 120° |

PACKAGE CONTENTS

COMPONENTS:

1. Upper Handles
2. Body
3. Press Plate Assembly
4. Lower Handles
5. Mounting Foot
6. Mounting Holes
7. Stand



The Metal Bender is shipped in a one ply-wooden case with the stand. Please review contents before assembly.

SAVE THESE INSTRUCTIONS FOR FUTURE REFERENCE.

This manual contains important information regarding safety, operation, maintenance and storage of this product. Before use, read carefully and understand all warnings, cautions, instructions and labels. Failure to do so could result in serious personal injury, property damage or even death.

GENERAL SAFETY RULES



WARNING: Read and understand all instructions. Failure to follow all instructions listed below may result in serious injury.



WARNING: The warnings, cautions, and instructions discussed in this instruction manual cannot cover all possible conditions or situations that could occur. It must be

understood by the operator that common sense and caution are factors which cannot be built into this product, but must be supplied by the operator.

SAFETY WARNINGS & CAUTIONS



WARNING: When using tools, machines or equipment, basic safety precautions should always be followed to reduce the risk of fire and personal injury. **READ ALL INSTRUCTIONS BEFORE USING THIS TOOL!**

- **KEEP THE WORK AREA CLEAN.** Cluttered work benches and dark work areas may cause accidents or injury.
- **OBSERVE THE WORK AREA CONDITIONS.** Do not use machines or power tools in damp, wet or poorly lit locations. Do not expose to rain.
- **KEEP THE WORK AREA WELL LIT.**
- **KEEP CHILDREN AWAY.** Children must never be allowed in the work area. Do not allow them to handle machines, tools or extension cords.
- **STORE IDLE EQUIPMENT.** When not in use, tools must be locked up in a dry location to inhibit rust. Always lock your tools up and keep them out of reach of children.
- **DO NOT FORCE THE TOOL.** The tool will function safer and more efficiently when it is used appropriately. Do not attempt to exceed the tool's capacity.
- **USE THE RIGHT TOOL FOR THE JOB.** Do not attempt to force a small tool or attachment to do the work of a large industrial tool. Do not use a tool for a purpose for which it was not intended.
- **DRESS PROPERLY.** Do not wear loose clothing or jewelry as they can be caught in moving parts. Protective, electrically non-conductive clothes and non-skid footwear are recommended when working. Wear restrictive hair covering to contain long hair. Gloves should always be worn when handling sheet metal.
- **DO NOT OVERREACH.** Keep proper footing and balance at all times. Do not reach over or across running machines.
- **MAINTAIN YOUR TOOLS WITH CARE.** Keep your tools sharp and clean. Follow the instructions for lubricating and changing accessories. The handles must be kept clean, dry and free from oil and grease at all times.
- **STAY ALERT.** Watch what you are doing and use common sense. Do not operate any tool when you are tired.

- **CHECK FOR DAMAGED PARTS.** Before using a tool, any part that appears damaged should be carefully checked to determine if it operates properly and performs its intended function. Check for alignment, binding of moving parts, any broken parts or mounting fixtures, or any other condition that may affect its performance. Any part that is damaged should be properly repaired or replaced by a qualified service provider.
- **REPLACEMENT PARTS AND ACCESSORIES.** When servicing, use only authentic replacement parts. Use of any other parts will void the warranty. Only use accessories intended for use with this tool. Approved accessories are available from the distributor.
- **DO NOT OPERATE THE TOOL WHEN UNDER THE INFLUENCE OF ALCOHOL OR MEDICATION.** Read the warning labels on prescriptions to determine if your judgment or reflexes are impaired while taking a specific medication. If there is any doubt, do not operate the tool.

PERSONAL SAFETY

- **Stay alert.** Watch what you are doing and use common sense when operating a tool. Do not use a tool while you are tired or under the influence of drugs, alcohol or medication. A moment of inattentiveness while operating a tool may result in serious personal injury.
- **Dress properly.** Do not wear loose-fitting clothing or jewelry. Keep your hair, clothing and gloves away from moving parts. Loose clothes, jewelry or long hair can be caught in moving parts. Air vents often cover moving parts and should be avoided.
- **Use safety apparel and equipment.** Use safety goggles or safety glasses with side shields which comply with current national standards, or when needed, a face shield. Use as dust mask in dusty work conditions. This applies to all people in the work area. Wear non-skid safety shoes, a hardhat, gloves and hearing protection when appropriate.

TOOL USE AND CARE

-
- **Secure your work** with clamps or a vise instead of your hand when practical. This allows for proper tool operation using both hands.
- **Store idle tools.** When tools are not in use, store them in a dry, secure place out of the reach of children. Inspect the tools prior to storage and before re-use.
- **Keep the guards in place** and in good working order.

ASSEMBLY

The Bender is VERY heavy and requires two people for the assembly and installation.

- Place the Bender on the floor and position the Mounting Feet facing forward.
- Put the left Bender Stand Mounting Pad against the left Mounting Foot. Assemble with the bolt, washer and nut. Tighten securely.
- Put the right Bender Stand Mounting Pad against the right Mounting Foot. Assemble with the bolt, washer and nut. Tighten securely.
- Lift the Bender and Stand upright (this requires two people).

- Put the Bender and Stand where it will be mounted to the floor and mark the mounting holes.
- Drill holes in the floor. Secure the Bender with bolts, lock washers and nuts (not included).



WARNING: Before drilling the mounting holes, make sure that there is no electrical conduit or water pipes.

OPERATION

Do not bend a stock thicker than 12 gauge. You will damage the Bender. Measure the thickness before use. When bending metal, keep both hands on the lower Handles.

1. Lift up the Handles to open the Press Plate Assembly. Insert the sheet metal that you want to bend over the Body and under the upper Press Plate Assembly. Slide the sheet metal and align the bend marks on the metal to the inner lip of the Body.
2. Press down on both Handles to lock in to position. This will cause the upper Press Plate Assembly to clamp down on the stock. If the Handle does not come down all the way and lock, either the stock is greater than 12 gauge, or the Bender needs to be adjusted to allow for a thicker stock.
3. Using both hands, lift up on the Body using its lower Handles until the desired angle is reached on the stock. Once the bend is complete, return the lower Handles to the down position.
4. Lift the upper Eccentric Handles all the way up and remove the sheet metal.

MAKING ADJUSTMENTS

You may need to adjust the position of the Press Plate Assembly to allow for thicker or thinner pieces of sheet metal, or to align it to the Body.

Adjust for Thickness of Sheet Metal

- Lift the upper Handles all the way up and loosen the nuts to allow the bolt to move up or down. Using an open-ended wrench, turn the bolt clockwise and move the Press Plate Assembly down. Turn it counterclockwise to move it up (for large stock).
- Determine the number of turns, then tighten the nuts to secure the bolt. Repeat on the opposite side.
- Adjust the bolt with the same number of turns. The Press Plate Assembly must be flush with the body when it is closed. If one side is not flush, readjust that side.

Align the Press Plate Assembly In or Out

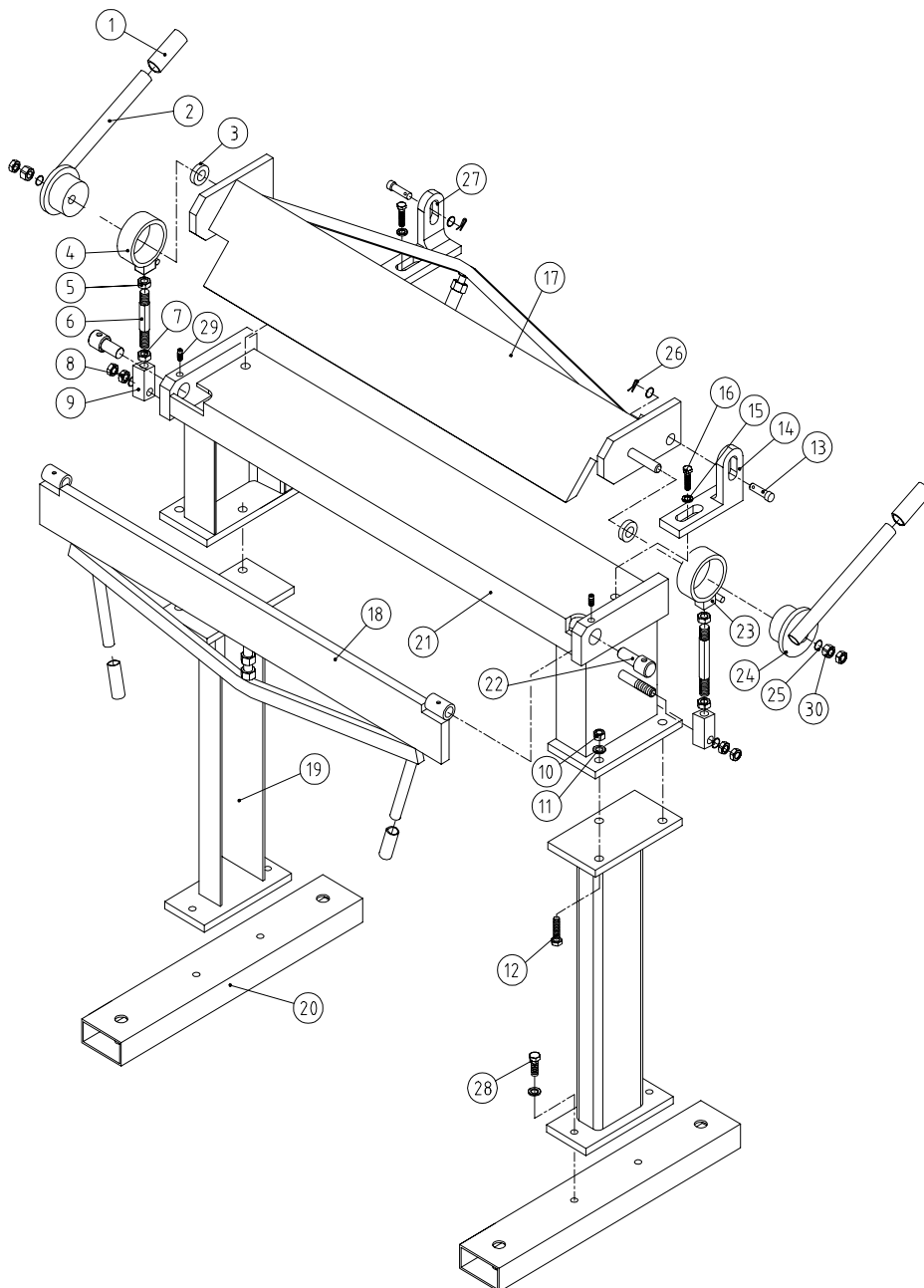
- Lift both of the upper Handles. Loosen the bolts on each side. Nudge each side of the Press Plate Assembly in or out. This will determine the roundness of the bend. The farther back the Press Plate Assembly, the rounder the bend. A typical setting should be between 1/16 of an inch to 1/8 of an inch behind the inner edge of the Body.

MAINTENANCE

- **Maintain your tools.** It is recommended that the general condition of any tool be examined before it is used. Keep your tools in good repair by adopting a program of conscientious repair and maintenance in accordance with the recommended procedures found in this manual.

- **Cleaning.** Only use soap and a damp cloth to clean your tools. Many household cleaners are harmful to plastics and other insulation. Never let liquid get inside a tool.
- **Always use caution when moving or handling the Metal Bender.**
- **Lubricate all of the moving parts periodically. Use a light oil.**
- **Tool service must be performed only by a qualified service provider.** Service or maintenance by an unqualified service provider could result in injury.
- **When servicing a tool, use only authentic replacement parts and follow the instructions in the manual.** Use of unauthorized parts or failure to follow Maintenance Instructions may create a risk of injury

DIAGRAM & PARTS LIST



| Part No. | Description | Qty | Part No. | Description | Qty |
|----------|------------------------|-----|----------|-------------------------|-----|
| 1 | Handle cover | 4 | 16 | Bolt M16X35 | 2 |
| 2 | Left crank handle | 1 | 17 | Upper press plate | 1 |
| 3 | Washer | 2 | 18 | Bending leaf | 1 |
| 4 | Left eccentric bushing | 1 | 19 | Leg for stand | 2 |
| 5 | Nut M16 | 4 | 20 | Level plate for stand | 2 |
| 6 | Connecting shaft | 2 | 21 | Frame | 1 |
| 7 | Bolt M12X12 | 2 | 22 | Turning shaft | 2 |
| 8 | Lock nut M20 | 2 | 23 | Right eccentric bushing | 1 |
| 9 | Square steel holder | 2 | 24 | Right crank handle | 1 |
| 10 | Lock nut M12 | 6 | 25 | Washer 20 | 2 |
| 11 | Washer 12 | 10 | 26 | Lock nut M20 | 2 |
| 12 | Bolt M12X45 | 6 | 27 | Pin 3 | 2 |
| 13 | Shaft | 2 | 28 | Left bracket plate | 1 |
| 14 | Right bracket plate | 1 | 29 | Bolt M12X25 | 4 |
| 15 | Washer 16 | 4 | 30 | Nut M16 | 2 |

For replacement parts and technical questions, please call **1-800-222-5381**.

WARRANTY

One-Year Limited Warranty



Northern Tool + Equipment Co., Inc.
 Burnsville, Minnesota 55306-6936
 Made in CHINA