




8-GAL PNEUMATIC OIL DISPENSER

OWNER'S MANUAL



 **WARNING:** Read carefully and understand all INSTRUCTIONS before operating. Failure to follow the safety rules and other basic safety precautions may result in serious personal injury.

Item# 42611

Thank you very much for choosing a Roughneck® Product! For future reference, please complete the owner's record below:

Model: _____ Purchase Date: _____

Save the receipt, warranty and these instructions. It is important that you read the entire manual to become familiar with this product before you begin using it.

This machine is designed for certain applications only. The distributor cannot be responsible for issues arising from modification. We strongly recommend this machine is not modified and/or used for any application other than that for which it was designed. If you have any questions relative to a particular application, DO NOT use the machine until you have first contacted distributor to determine if it can or should be performed on the product.

For technical questions, please call **1-800-222-5381**.

⚠ WARNING: Read carefully and understand all INSTRUCTIONS before operating. Failure to follow the safety rules and other basic safety precautions may result in serious personal injury. Save these instructions in a safe place and on hand so that they can be read when required. Keep these instructions to assist in future servicing.

GENERAL SAFETY REGULATIONS

⚠ WARNING: Read and understand all instructions.

⚠ WARNING: The warnings, cautions, and instructions discussed in this instruction manual cannot cover all possible conditions or situations that could occur. It must be understood by the operator that common sense and caution are factors that cannot be built into this product, but must be supplied by the operator.

- 1. Keep the work area clean and dry.** Damp or wet work areas can result in injury.
- 2. Keep children away from work area.** Do not allow children to handle this product.
- 3. Store idle equipment.** When not in use, tools and equipment should be stored in a dry location to inhibit rust.
- 4. Use the right tool for the job.** Do not attempt to force small equipment to do the work of larger industrial equipment. There are certain applications for which this equipment was designed. It will do the job better and more safely at the capacity for which it was intended. Do not modify this equipment, and do not use this equipment for a purpose for which it was not intended.
- 5. Check for damaged parts.** Before using this product, carefully check that it will operate properly and perform its intended function. Check for damaged parts and any other conditions that may affect the operation of this product. Replace damaged or worn parts immediately.
- 6. Do not overreach.** Keep proper footing and balance at all times to prevent tripping, falling, back injury, etc.
- 7. DO NOT use the equipment when tired or under the influence of drugs, alcohol, or medication.** A moment of inattention while operating this equipment may result in serious personal injury.
- 8. Industrial applications must follow OSHA requirements.**

SPECIFIC OPERATION WARNINGS

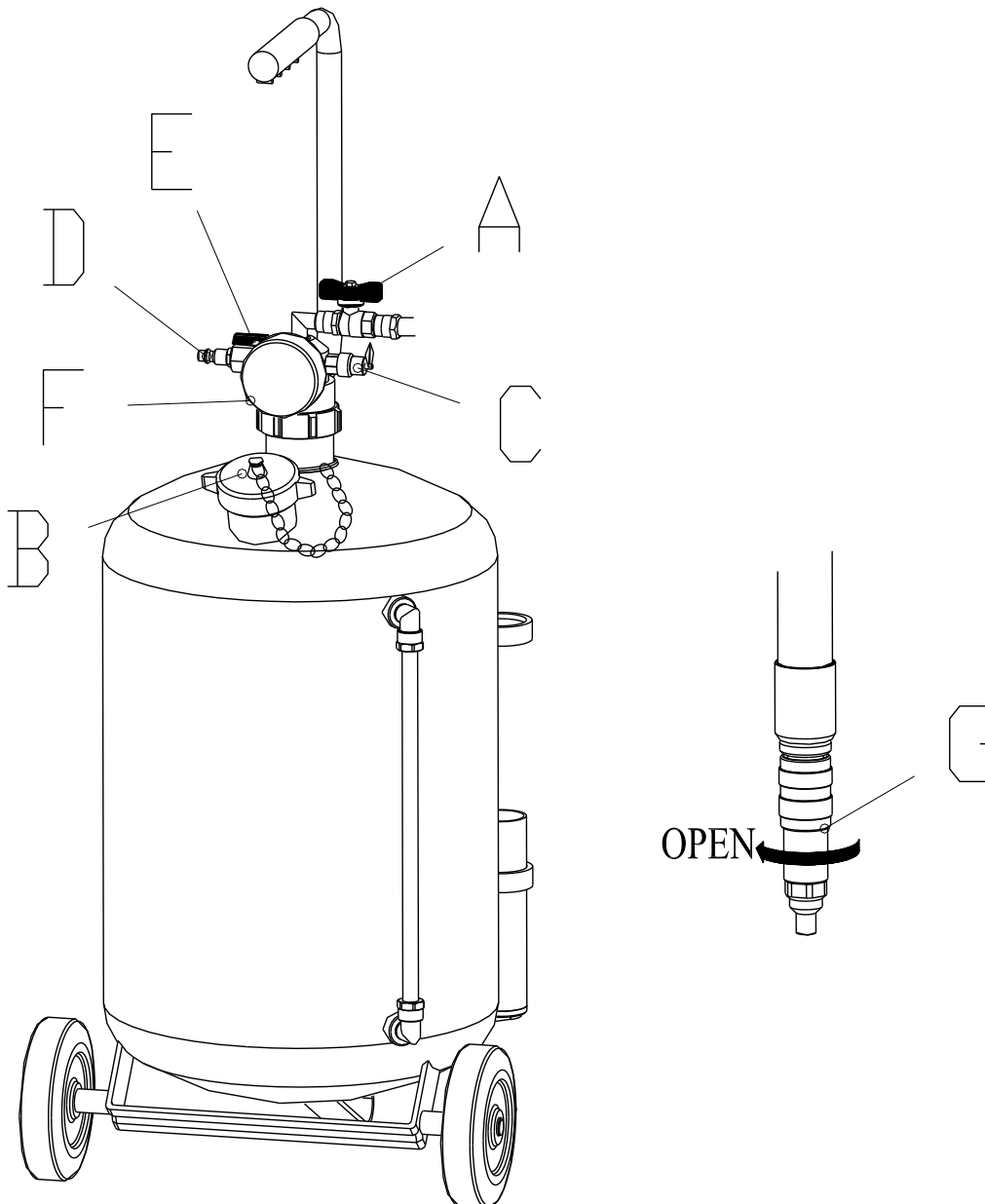
- Do not deliver corrosive or flammable liquids.
- Do not expose the tank to heat sources.
- Do not do welding on the vessel only use the appliance for its intended purpose.

OPERATING CONDITIONS

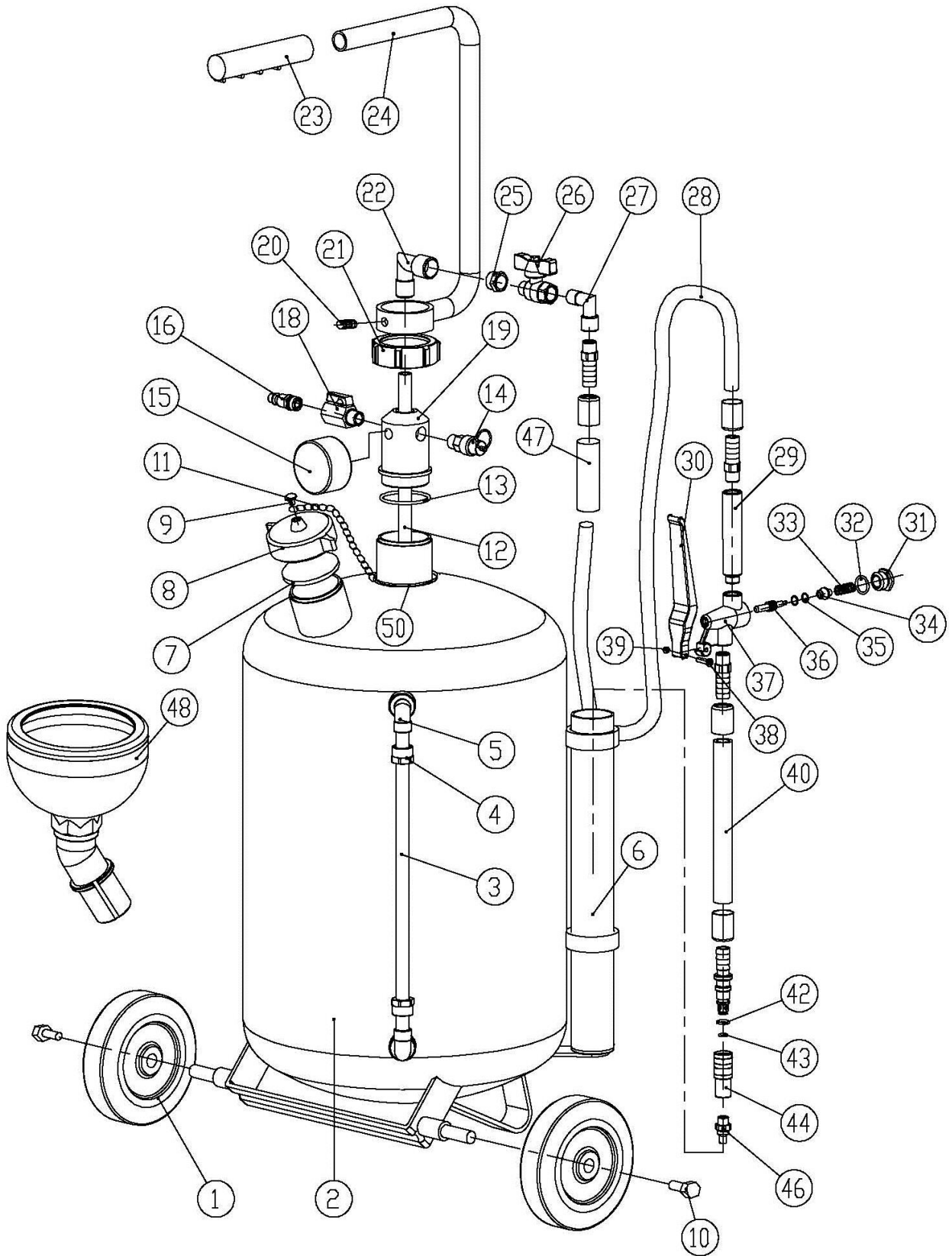
1. Remove cap B and fill the reservoir (4/5 its capacity) with oil, using the funnel supplied.
2. Secure cap B. Close ball valve A. Connect compressed air to quick couple D, open the ball valve E until manometer F gives a pressure of 3-8 bar (45 – 115 PSI).
3. To deliver oil, open ball valve A. Open gun set G by it counter clockwise.

⚠ WARNING:

Before opening the cap B, always discharge the reservoir compressed air by opening ball valve E.



DIAGRAMS AND PARTS LIST



Part No.	Description	Qty.	Part No.	Description	Qty.
1	WHEELS	2	25	DOUBLE END ADAPTER	1
2	RESERVOIR 30L	1	26	BALL VALVE	1
3	TUBE WITH LABEL	1	27	ELBOW ADAPTER	1
4	NUT	2	28	CONNECTING HOSE	1
5	ELBOW	2	29	GUN SPINDLE	1
6	CONTAINER	1	30	GUN HANDLE	1
7	GASKET	1	31	ROUND HEAD SCREWS PLUG	1
8	PRESSURE PLUG	1	32	O-RING 14X1.8	1
9	ROUND HEAD SCREWS	1	33	SPRING	1
10	BOLT	2	34	VALVE	1
11	CHAIN	1	35	O-RING 5X1.8	2
12	STEEL TUBE	1	36	HANDSPIKE	1
13	O-RING 42.5X2.65	1	37	GUN SEAT	1
14	SAFETY VALVE	1	38	SCREWS	1
15	GAUGE	1	39	HEXAGON NUT	1
16	PLUGS	1	40	CONNECTING HOSE	1
18	BALL VALVE	1	42	O-RING 9X1.8	1
19	SEAT	1	43	O-RING 5X1.8	1
20	SCREWS	1	44	GUN SET	1
21	ROUND NUT WITH COLLAR	1	46	GUN NIB	1
22	ELBOW ADAPTER	1	47	PROTECT SET	1
23	GRIPE	1	48	FUNNEL	1
24	HANDLE	1	50	RING	1

For replacement parts and technical questions, please call **1-800-222-5381**.

WARRANTY

One-Year Limited Warranty



Distributed by
Northern Tool + Equipment Co., Inc.
Burnsville, MN 55306
NorthernTool.com
Made in China