




8-GALLON AIR-OPERATED OIL CHANGER

OWNER'S MANUAL



 **WARNING:** Read carefully and understand all **INSTRUCTIONS** before operating. Failure to follow the safety rules and other basic safety precautions may result in serious personal injury.

Item# 42610

Thank you very much for choosing a Roughneck® Product! For future reference, please complete the owner's record below:

Model: _____ Purchase Date: _____

Save the receipt, warranty and these instructions. It is important that you read the entire manual to become familiar with this product before you begin using it.

This machine is designed for certain applications only. The distributor cannot be responsible for issues arising from modification. We strongly recommend this machine is not modified and/or used for any application other than that for which it was designed. If you have any questions relative to a particular application, DO NOT use the machine until you have first contacted distributor to determine if it can or should be performed on the product.

For technical questions, please call **1-800-222-5381**.

⚠ WARNING: Read carefully and understand all INSTRUCTIONS before operating. Failure to follow the safety rules and other basic safety precautions may result in serious personal injury. Save these instructions in a safe place and on hand so that they can be read when required. Keep these instructions to assist in future servicing.

GENERAL SAFETY REGULATIONS

⚠ WARNING: Read and understand all instructions.

⚠ WARNING: The warnings, cautions, and instructions discussed in this instruction manual cannot cover all possible conditions or situations that could occur. It must be understood by the operator that common sense and caution are factors that cannot be built into this product, but must be supplied by the operator.

- 1. Keep the work area clean and dry.** Damp or wet work areas can result in injury.
- 2. Keep children away from work area.** Do not allow children to handle this product.
- 3. Store idle equipment.** When not in use, tools and equipment should be stored in a dry location to inhibit rust.
- 4. Use the right tool for the job.** Do not attempt to force small equipment to do the work of larger industrial equipment. There are certain applications for which this equipment was designed. It will do the job better and more safely at the capacity for which it was intended. Do not modify this equipment, and do not use this equipment for a purpose for which it was not intended.
- 5. Check for damaged parts.** Before using this product, carefully check that it will operate properly and perform its intended function. Check for damaged parts and any other conditions that may affect the operation of this product. Replace damaged or worn parts immediately.
- 6. Do not overreach.** Keep proper footing and balance at all times to prevent tripping, falling, back injury, etc.
- 7. DO NOT use the equipment when tired or under the influence of drugs, alcohol, or medication.** A moment of inattention while operating this equipment may result in serious personal injury.
- 8. Industrial applications must follow OSHA requirements.**

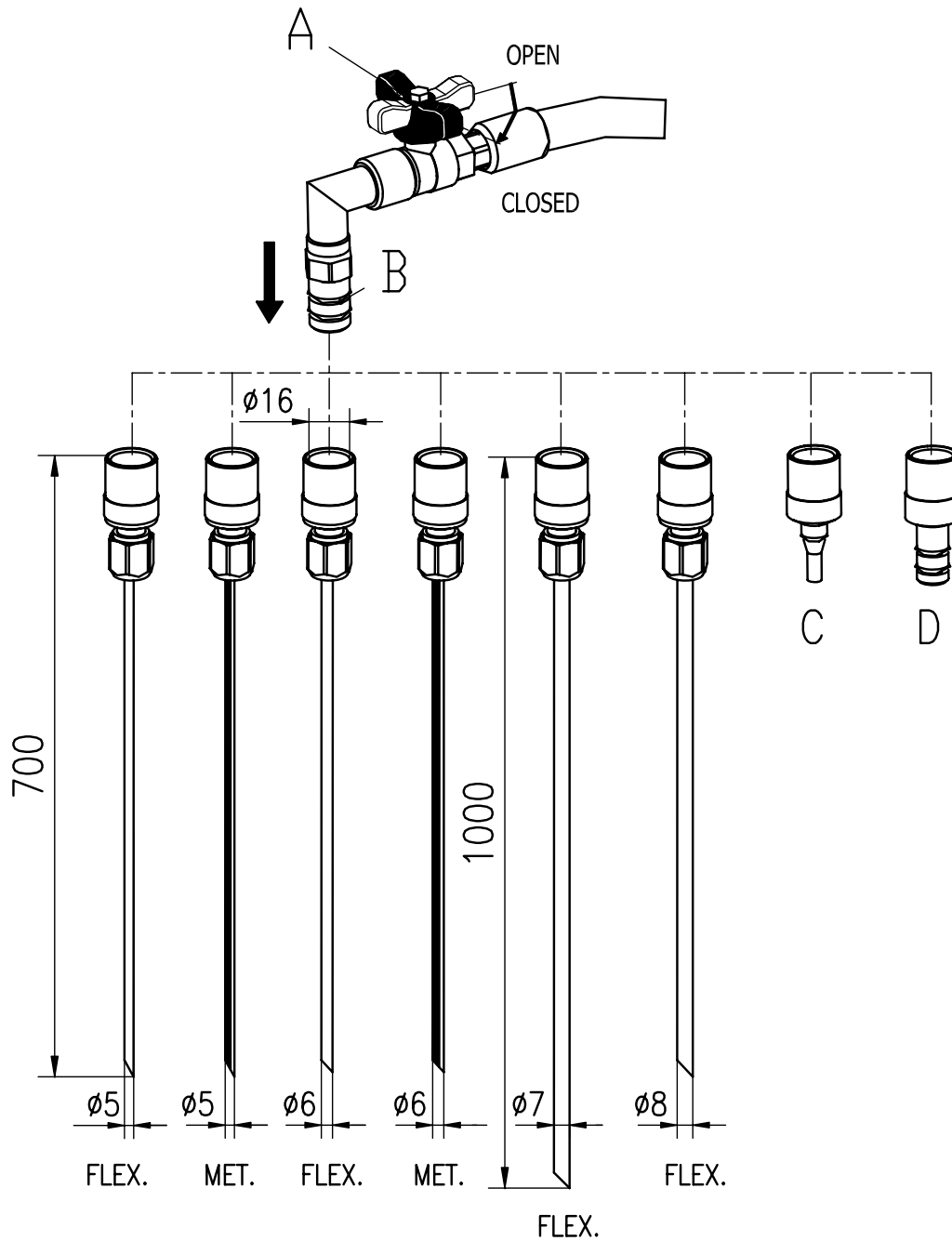
SPECIFIC OPERATION WARNINGS

- Do not extract caustic or flammable products.
- Do not expose the reservoir to any source of heat.

- While extracting high temperature oils, keep hands and face protected.
- Only use the device for the purpose for which it has been designed.
- Do not modify any component of the equipment. Only use original spare parts.

ATTENTION!

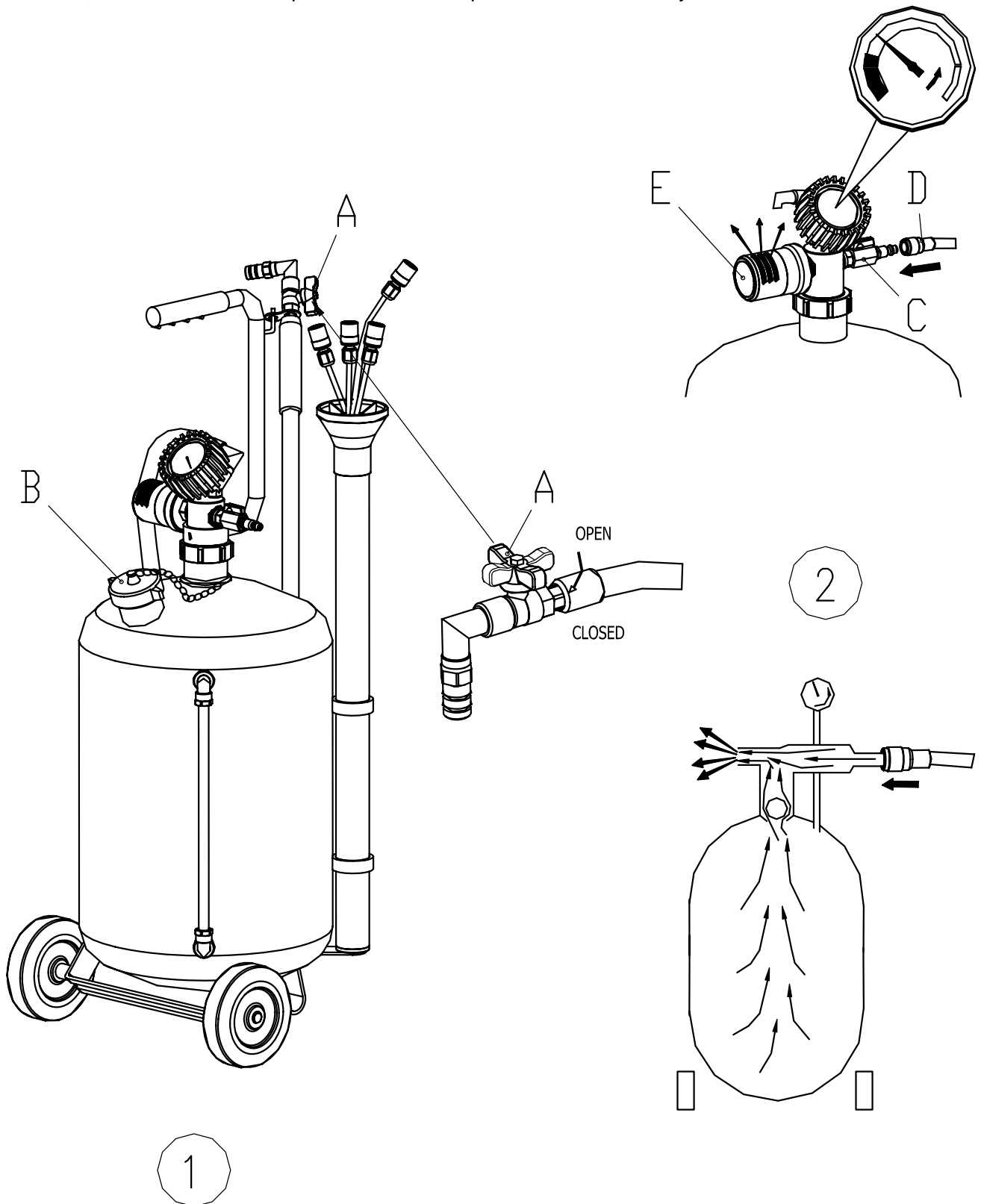
Some cars have a built-in oil suction probe. In this case, connect the coupler of the oil changer B directly to the probe. For other makes of car (Volkswagen-BMW) equipped with a built-in probe having a different opening, connector (C-Volkswagen, D-BMW) must be used.



OPERATING INSTRUCTIONS

Fig.①: Close the suction valve (ball valve) A.
Tighten the drain cap B manually.

Fig.②: Connect compressed air 100psi (7bar) to quick coupler D, Open the ball Valve C. Air will flow out from the muffler E. When the arrow of the vacuum gauge approaches the red field, after 70-80 seconds, close the ball valve C, then shut off the compressed air. The aspiration oil is now ready for use.



OIL EXTRACTION

Oils should always be removed when they are hot (158 - 176° F). The suction capacity of the unit is equal to 2/3 of its reservoir capacity.

Insert the probe into the dipstick tube. Connect the probe to the unit. Open ball valve A, taking care to keep the probe near the bottom of the sump.

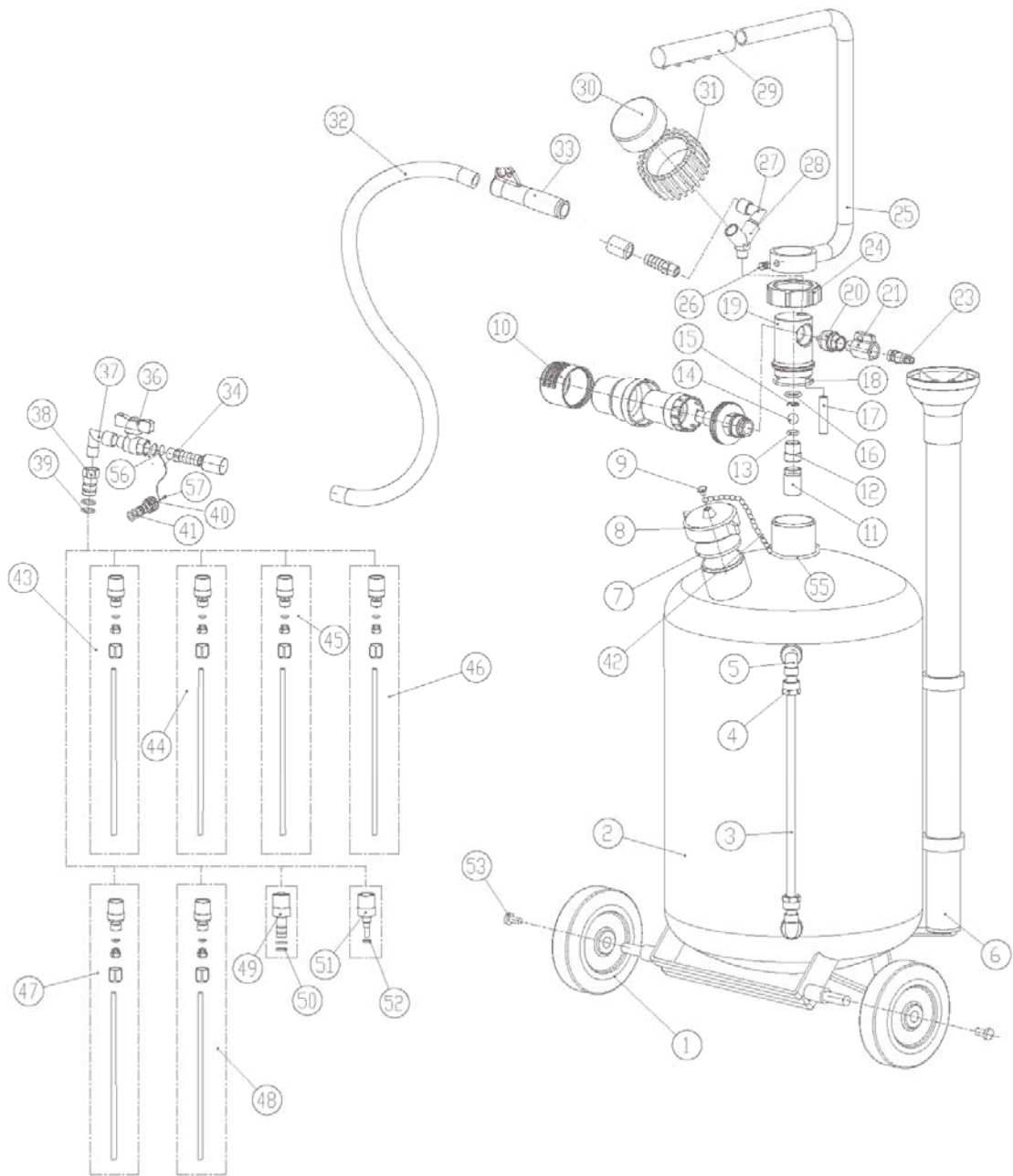
EMPTYING THE ASPIRATION OIL

Remove the cap B and manually drain the oil.
First open suction valve A.

CAUTION!

Do not completely overturn the reservoir.
The drained fluids should not come into contact with the oil changer's Venturi valve. If this happens, unscrew the muffler and blow it out with compressed air.

DIAGRAMS AND PARTS LIST



Part No.	Description	Qty.	Part No.	Description	Qty.
1*	WHEELS	2	29	HANDLE	1
2	RESERVOIR 30L	1	30*	VACUUMETER	1

3	TUBE WITH LABEL	1	31	PROTECT SET	1
4	NUT	2	32*	COMPLETE SUCTION HOSE	1
5	ELBOW	2	33*	PROTECT SET	1
6	PROBES CONTAINER	1	34*	CHAIN	1
7	GASKET	1	36*	BALL VALVE	1
8	PRESSURE PLUG	1	37*	ELBOW ADAPTER	1
9	ROUND HEAD SCREWS	1	38*	LINKER	1
10	COMPLETE MUFFLER	1	39*	O-RING 13.2X1.8	2
11	ASPIRATOR	1	40*	STUFF	1
12	VALVE BADY	1	41*	O-RING 6.9X1.8	2
13*	O-RING 9.5X2.65	1	42*	CHAIN	1
14	STEEL BALL	1	43*	PROBE Φ 5X700 FLEXIBLE	1
15	SPRING LOCK WASHER	1	44*	PROBE Φ 6X700 FLEXIBLE	1
16*	O-RING 15X2.65	1	45*	PROBE Φ 7X1000 FLEXIBLE	1
17	VITTA	1	46*	PROBE Φ 8X700 FLEXIBLE	1
18*	O-RING 42.5X2.65	1	47*	PROBE Φ 5X700 MALLEABLE	1
19	SEAT	1	48*	PROBE Φ 6X700 MALLEABLE	1
20	MUZZLE	1	49*	CONNECTOR(BMW)	1
21*	BALL VALVE	1	50*	O-RING 9X1.8	2
23	PLUGS	1	51*	CONNECTOR (VOLKSWAGEN)	1
24	ROUND NUT WITH COLLAR	1	52*	O-RING 6X1.8	1
25	GRIPE	1	53	BOLT	2
26	SCREWS	1	55	RING	1
27	ELBOW ADAPTER	1	56*	RING	1
28	Y-ELBOW ADAPTER	1	57*	PAN HEAD SCREW	1

For replacement parts and technical questions, please call **1-800-222-5381**.

WARRANTY

One-Year Limited Warranty



Distributed by
Northern Tool + Equipment Co., Inc.
Burnsville, MN 55306
NorthernTool.com
Made in China