

OPERATING INSTRUCTION

PORTABLE SUBMERSIBLE PUMP

ITEM NO. 42358

CAUTION:

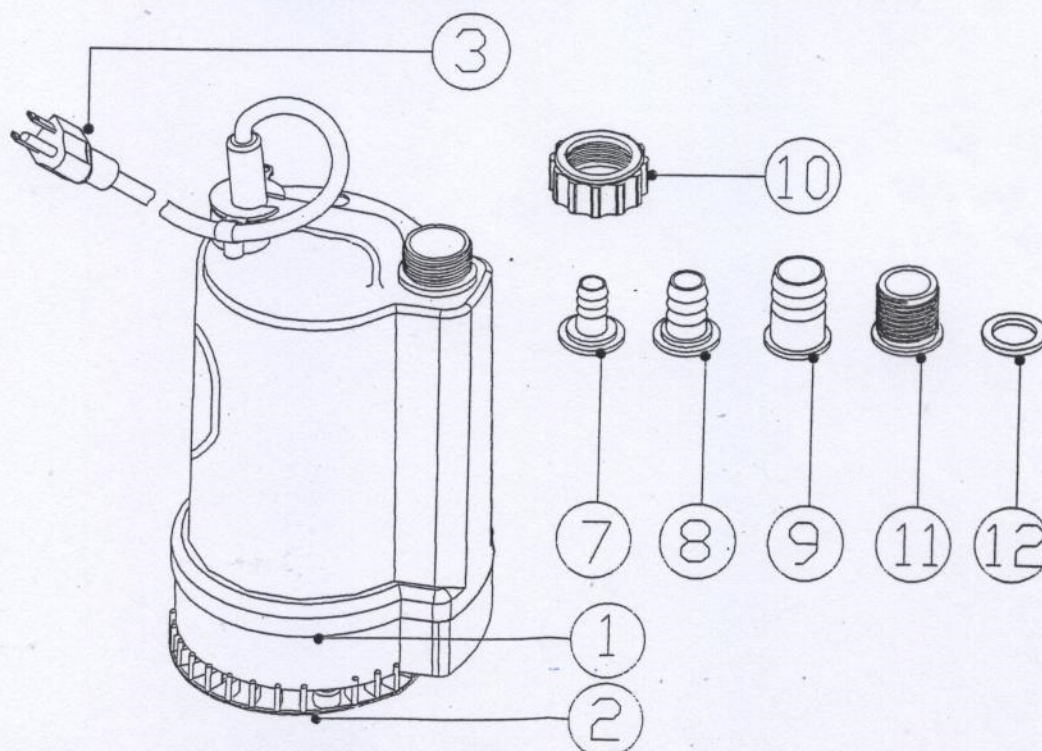
1. This Submersible Pump should not be used to pump petrol, other inflammables, brines or strong chemicals.
2. Do not use the pump if the water is liable to freeze as this will cause damage to the pump.
3. For fresh water only

FOR YOUR SAFETY:

1. An approved rod must be used when pumping from ponds or swimming pools.
2. Do not pump from a swimming pool when any person or animal is in the pool.
In accordance with L.E.E. Regulations and for your added safety, we recommend that this pump is connected to mains supply via a residual current circuit breaker (earth leakage protection device-RCD, or GFCI plug)

PARTS LISTS:

Item	Description	Parts No.
1	Base	0001
2	Mud Pack	0002
3	Cable with connector	0003
4	Impeller (screw fit to shaft)	0004(not shown)
5	Gasket	0005(not shown)
6	Screen/Filter	0006(not shown)
7	1/2"adapter	0007
8	3/4"adapter	0008
9	1"adapter	0009
10	1"adapter for part 7,8,9,11	0010
11	3/4Gardening Thread adapter	0011
12	Gasket for Discharge	0012



Portable Submersible Pump

INTRODUCTION

This submersible pump is designed for use as a utility pump. For use with clean, or slightly turbid fresh water. Not intended for use in salty/briny water, oil, or corrosive fluids. The oil-less motor system does not require lubrication.

SPECIFICATIONS

Rated voltage	115V / 60 Hz
Horsepower	0.25 HP
Max. flow rate	1,347 GPH

IMPORTANT SAFETY PRECAUTIONS

WARNING! Read and understand all instructions before using this tool. Keep this manual for the safety warnings and precautions, operating, inspection and maintenance instructions. When using this tool, basic precautions should always be followed to reduce the risk of personal injury and/or damage to the equipment.

SERVICE

1. **Check for damaged parts.** Before using any tool, any part that appears to be damaged should be carefully checked to determine that it will operate properly and perform its intended functions. Check for alignment and binding of moving parts; broken parts or mounting fixtures, or any other condition that may affect proper operation. Any part that is damaged should be properly repaired or replaced by a qualified technician.
2. **When servicing, use only identical replacement parts.** Only use accessories intended for use with this tool. Replace damaged parts immediately.

TOOL USE AND CARE

1. **Use the right tool for the job.** Do not attempt to force a small tool or attachment to do the work of a larger industrial tool. The tool will perform better and safer at the task for which it was intended. Do not modify this tool or use for a purpose for which it was not designed.

ELECTRICAL SAFETY

1. **Disconnect power supply.** Disconnect from power supply when not in use, before cleaning, servicing or changing any parts or accessories.
2. **Double Insulated pumps are equipped with a polarized plug (one blade is wider than the other), this plug will fit in a polarized outlet only one way.** If the plug does not fit fully in the outlet, reverse the plug. If it still does not fit, contact a qualified electrician to install a polarized outlet. Do not change the plug in any way. Double Insulation eliminates the need for a three wire grounded power cord and grounded power supply system.
3. **Grounded tools must be plugged into an outlet properly installed and grounded in accordance with all codes and ordinances.** Never remove the grounding prong or modify the plug in any way. Do not use any adapter plugs. Check with a qualified electrician if you are in doubt as to whether the outlet is properly grounded. If the pump should electronically malfunction or break down, grounding provides a low resistance path to carry electricity away from the user.
4. **Do not abuse the cord.** Never use the cord to carry the pump or pull the plug from an outlet. Keep cord away from heat, oil, sharp edges or moving parts. Do not operate this pump if the power cord is frayed or damaged. Replace damaged cords immediately. Damaged cords increase the risk of electric shock. Do not modify the plug in any way.
5. **When operating outside, use an outdoor extension cord marked "W-A" or "W".** These cords are rated for outdoor use and reduce the risk of electric shock.
6. **Avoid using an unnecessarily long extension cord.** Choose a cord that is appropriate for the situation, as a cord that is too long and running across the floor can be more dangerous than helpful.

SPECIFIC SAFETY INSTRUCTIONS

1. **The pump is designed for use with clean or slightly turbid fresh water.** Not intended for use in salty/briny water, oil or corrosive liquids.
2. **Do not lift the pump by the power cord.** Attempting to lift or support the pump by the power cord will damage the cord and cord connections. Lift the pump by the handle only. If you need to lower the pump into position, use a rope attached to the loop provided above the handle.
3. **Disconnect the power source, release all pressure within the system and drain water from the pump before maintenance.**
4. **Check pump and hoses for weakened or worn condition before each use, and make certain that all connections are secure.**
5. **Periodically inspect the pump and system components to make sure the inlet is free of debris or foreign objects.**
6. **Do not open the pump casing or motor housing.**
7. **Do not pump from a swimming pool while people or animals are in it.**

INSTALLATION

1. **Place the pump on a hard level surface, making sure there is no debris that may lodge in the pump inlet.** Use a board or piece of metal if needed to raise the pump in the case of a muddy or debris covered base. If you have doubts as to debris in the water, we recommend using a pump filter or pump bag (sold separately) to extend the life of your pump.

OPERATION

1. **The pump must be submersed in at least 1/2" of water to operate.**
2. **The pump will remove water down to 1/8" in ideal conditions.** If the pump is operating and no water comes out of the discharge line, shut off the power immediately. The water level is likely very low and the pump is no longer primed.
3. **The pump is designed to pump water only.** Pumping petrol, other inflammable materials, brine or strong chemicals creates a risk of explosion.
4. **Keep the pump inlet free of debris or foreign material at all times.** If required, use a raised base for the pump to sit on (see Installation 1). We also recommend using a pump bag or filter to extend the life of your pump.

MAINTENANCE & STORAGE

1. **Always ensure that the pump is operating with adequate water supply.** Periodically shut off the power supply and check the pump for debris lodged in the intake grill. The intake grill may be removed and cleaned by removing the screws underneath the pump housing.
2. **Do not disassemble or modify the motor housing or the power cord.** The pump's motor is completely sealed in the motor housing and does not require regular service. The power cord is non-replaceable. Do not stress the cord by wrapping it too tightly around the pump, as it could cause the cord to eventually fray and break down.
3. **Make sure the pump is dry and clean before storing.** Always store your pump in a cool dry place. Never store it while it is still connected to power. Do not store in water.

TROUBLESHOOTING

Problem	Possible causes	Suggested solution
Pump does not start.	Blown fuse/circuit breaker has tripped.	If fuse has blown, replace with new fuse/reset circuit breaker.
	Low line voltage.	Check size of wiring from main switch on property/contact your local power authority.
Pump operates but pumps very little or no water.	Low line voltage.	Check size of wiring from main switch on property/contact your local power authority.
Pump has stopped.	Lower than operating water level has caused pump to overheat.	Increase operating water level or pump cooler water.