



24 Volt - 3/8" Cordless Impact Wrench

INSTRUCTION MANUAL



WARNING:

Read carefully and understand RULES FOR SAFE OPERATION and instructions before operating.

Failure to follow the safety rules and other basic safety precautions may result in serious personal injury.

Item # 3994040

IMPORTANT SAFETY INSTRUCTIONS

WARNING: *When using electrical equipment such as this, basic safety precautions should always be followed to reduce the risk of personal injury. Please familiarize yourself with the following information to prevent damage to your equipment and injury to the operator, property damage, or death*



READ ALL INSTRUCTIONS BEFORE USING THIS PRODUCT

We strongly recommend that this tool not be modified and /or used for any application other than that for which it was designed. If you have any questions relating to its application, do not use the equipment until you have consulted us and we have advised you.

- 1. KEEP WORK AREA CLEAN.** Cluttered areas invite injuries.
- 2. CONSIDER WORK AREA ENVIRONMENT.** Don't use power tools in damp, wet, or poorly lit locations. Don't expose your tool to rain. Keep the work area well lit. Don't use tools in the presence of flammable gases or liquids.
- 3. KEEP CHILDREN AWAY.** All children should be kept away from the work area. Don't let them handle machines, tools or extension cords.
- 4. STORE IDLE EQUIPMENT.** Store equipment in a dry area to inhibit rust. Equipment also should be in a high location or locked up to keep out of reach of children.
- 5. DON'T FORCE THE TOOL.** It will do the job better and more safely at the rate for which it was intended.
- 6. USE THE RIGHT TOOL.** Don't force a small tool or attachment to do the work of a larger industrial tool. Don't use a tool for a purpose for which it was not intended.
- 7. DRESS PROPERLY.** Don't wear loose clothing or jewelry. They can be caught in moving parts. Protective, non-electrically conductive gloves and non-skid footwear are recommended when working. Wear protective hair covering to contain long hair and keep it from harm.
- 8. USE EYE PROTECTION.** Use a full-face mask if the work you're doing produces metal filings, dust or wood chips. Goggles are acceptable in other situations. Wear a clean dust mask if the work involves creating a lot of fine or coarse dust.
- 9. DO NOT TOUCH SOCKET WITH HANDS AFTER USE.** It can become extremely hot after use.
- 10. SECURE WORK.** Use clamps or a vise to hold the work if possible. It's safer than using your hands and it frees both hands to operate the tool.
- 11. DON'T OVERREACH.** Keep proper footing and balance at all times. Do not reach over or across machines that are running.
- 12. MAINTAIN TOOLS WITH CARE.** Keep tools sharp and clean for better and safer performance. Follow instructions for lubricating and changing accessories. Keep handles dry, clean, and free from oil and grease.
- 13. REMOVE ADJUSTING KEYS AND WRENCHES.** Make it a habit to check that keys and adjusting wrenches are removed from any rotating tool before using.
- 14. AVOID UNINTENTIONAL STARTING.** Don't carry tool with a finger on the switch. Be sure the direction switch is in the **NEUTRAL** position when not in use or when changing sockets.
- 15. STAY ALERT.** Watch what you are doing & use common sense. Don't operate any tool when you are tired.
- 16. CHECK FOR DAMAGED PARTS.** Before using drill, any part that is damaged should be carefully checked to determine that it will operate properly and perform its intended function. Check for alignment of moving parts, binding of moving parts, breakage of parts, mountings, and other conditions that may affect its operation. Check sockets to make sure they are in good condition. Inspect screws and tighten any ones that are loose. Any part that is damaged should be properly repaired or replaced by an authorized service center unless otherwise indicated elsewhere in the instruction manual. Have defective switches replaced by an authorized service center. Don't use the tool if switch does not turn on and off properly.

IMPORTANT SAFETY INSTRUCTIONS

- 17. GUARD AGAINST ELECTRIC SHOCK.** Prevent body contact with grounded surfaces: pipes, radiators, ranges, and refrigerator enclosures. When drilling or cutting into walls, floors, or wherever "live" electrical wires may be encountered, try to ascertain whether there is a danger of shock. Even so, **DO NOT TOUCH METAL PARTS OF THE TOOL.** Hold the tool only by the plastic handle or the side grip to prevent electric shock if you hit a live wire.
- 18. REPLACEMENT PARTS.** When servicing, use only identical replacement parts.

SPECIFIC SAFETY RULES

PRECAUTIONS FOR BATTERY AND CHARGER

- 1. CHARGE BATTERIES FULLY** before initial use.
- 2. CHARGE AT ROOM TEMPERATURE.** Temperature must be higher than 32°F (0°C) and lower than 122°F (50°C).
- 3. DO NOT CHARGE IF CHARGER'S CORD OR PLUG IS DAMAGED.** Charging with damaged cord may result in fire or electrical shock. If charger is damaged in any way, have it repaired by a qualified serviceman.
- 4. DO NOT SHORT ACROSS TERMINALS OF BATTERY.** Take care that metal such as paper clips, nails, the sides of a metal toolbox do not cause a short in your battery. Extremely high temperatures and fire can result.
- 5. DO NOT INCINERATE BATTERY**



SPECIFICATIONS

Voltage: 24V

Power Pack Capacity: 1.3 AH (Ni-Cd)

No Load Speed: 0 - 2300 RPM

Kit Includes: 24V Cordless Impact Wrench, 2 - 24V Battery Packs, 1 Charger, 11/16" Socket, 3/4" Socket, 13/16" Socket, 15/16" Socket and Blow-Molded Case

OPERATING PROCEDURES

WARNING: *For your own safety do not attempt to use your electrical tool until the battery is fully charged and you have read all the instructions.*



REMEMBER: *This cordless tool is always in an operating condition and does not need to be connected to a power supply.*



CAUTION:

- *Do Not expose either the electrical tool or charger to rain or water.*
- *Do not overcharge the battery as this could damage the battery cells.*
- *Do not force the tool. If the tool is laboring, it is possible that the battery power is low. If so, stop working and recharge the battery pack.*
- *To prolong the life of the tool, do not continually work more than 20 minutes at a time.*



OPERATING PROCEDURES

GETTING TO KNOW YOUR CORDLESS TOOL/CHARGER

24V CORDLESS IMPACT WRENCH:

1. 3/8" Square Socket Drive
2. Metal Gear Housing
3. Ventilation Slots
4. Forward / Reverse / Neutral Lock Switch
5. Variable Speed Trigger Switch
6. Padded Hand Grip
7. Battery Release Button
8. Battery Pack



GENERAL

- This tool is intended for use with 3/8" drive impact sockets for loosening and tightening nuts and bolts. Its impacts help to turn stiff fasteners.
- To prolong the life of the tool, do not use it continuously for more than 20 minutes at a time.
- If the tool shows signs of diminishing power, stop and recharge the battery. Using it to do heavy work when the battery is weak drains the battery very quickly and can damage the battery.
- To use the tool, first start the fastener on the thread by hand, being sure it is not cross-threaded.
- Choose a 3/8" drive socket of the correct size and mount it on the drive shaft.
- Place the socket over the fastener.
- Use the variable speed only for starting.
- Allow the tool to come up to full speed.
- When you hear the sound of the impacts, stop after three or four. The fastener is tight.

VARIABLE SPEED

You can vary the spindle rotation speed by modulating finger pressure on the trigger.

OPERATING PROCEDURES

ROTATION DIRECTION

Your tool is equipped with a 3-position Forward / Reverse / Neutral Lock Switch through the housing above the trigger. When knob is pushed toward the right, rotation is forward (clockwise). When pushed in from the right to the left side, rotation is reversed (counter-clockwise), and when in center position, it is locked in neutral and the trigger is blocked. Do not push the rotation direction knob until the drive stops turning.

BATTERY PACK

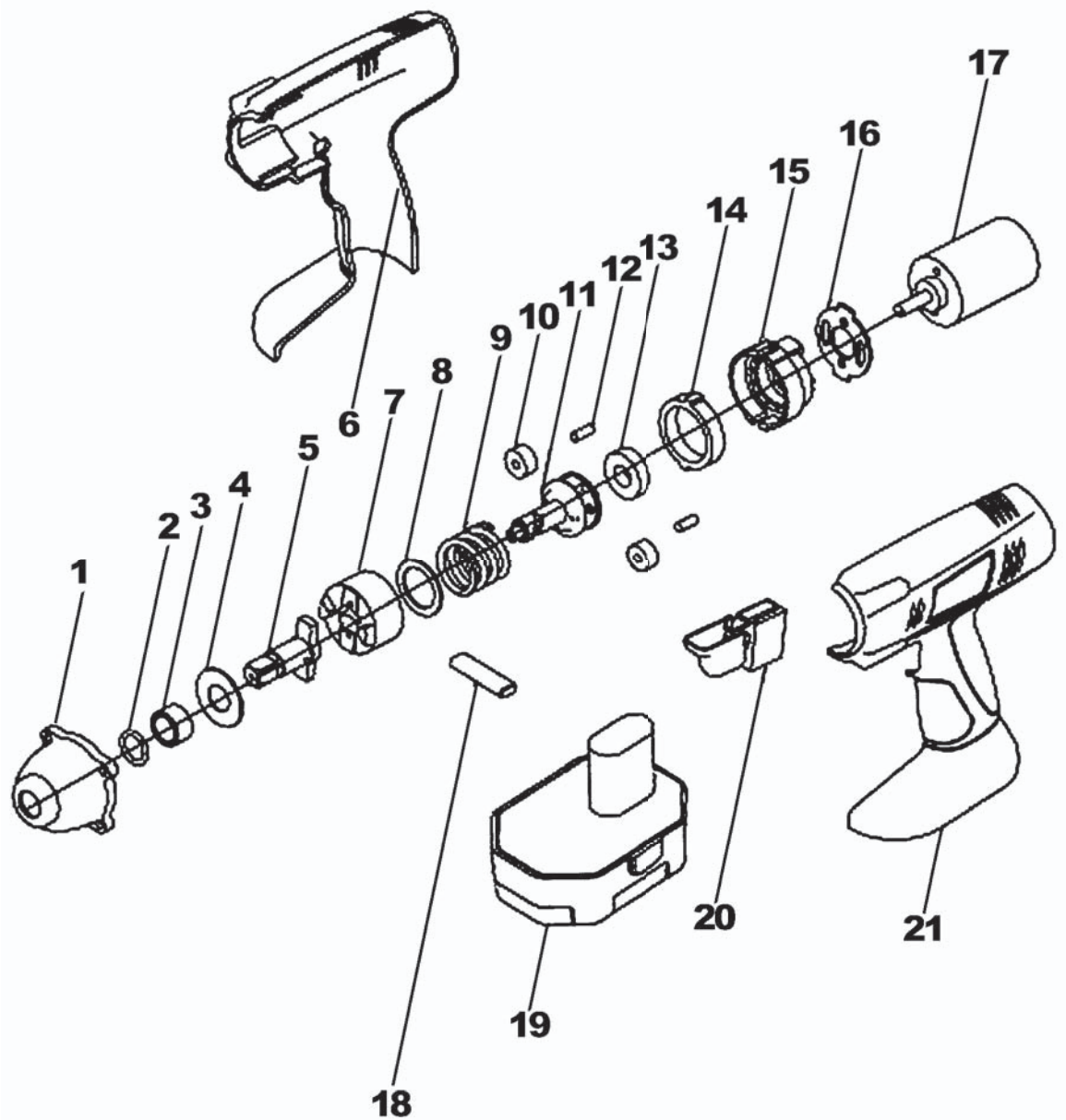
1. Battery must be charged before using tool for the first time. Batteries will reach full performance after about five charge/discharge cycles.
2. Always have 3-position Forward / Reverse / Neutral Lock Switch in the center position when removing or inserting battery to avoid unintentional starting.
3. Remove the battery from the tool. Press the Battery Release Button and remove battery.
4. Place battery on the charger.
5. To charge, plug the charger's AC input plug into a 110/120V household current.
6. When battery is charging, red light is on. When battery is finished charging, a green light comes on.
7. **IMPORTANT:** Ensure that charging takes place in a safe, secure location away from liquids.
8. Normal charging time is approximately 1 hour.
9. To insert the battery into the tool, simply slide the pack in until Battery Release Button lock spring clicks.
10. When charging more than one pack in succession, allow 15 minutes between charges.
11. The battery discharges slowly over time, even when not used, and may require recharging before you use the tool.
12. After many charge/discharge cycles, your batteries will lose their ability to hold a charge. They should then be replaced. Dispose of batteries at an appropriate waste disposal facility. They contain cadmium, so do not throw batteries away in common trash receptacles.

MAINTENANCE

- Keep the tool clean using a soft damp (not wet) cloth. Do not use solvents on the plastic parts.
- Lubrication is not necessary. After long use, have an authorized service center maintain and lubricate the tool.

PARTS LIST

PART No.	DESCRIPTION	PART No.	DESCRIPTION
01	Gear Cover	12	Column Pin
02	Hermetic Ring	13	Shaft Bushing
03	Drive Shaft Sheath	14	Inside Gear
04	Shaft Washer	15	Gear Box
05	Square Drive Shaft	16	Connection Clip
06	Housing (right)	17	D.C. Motor
07	Clutch	18	Forward/Reverse/Neutral Lock Button
08	Washer	19	Battery Pack
09	Spring	20	Trigger Switch
10	Planetary Gear	21	Housing (left)
11	Core Shaft		



WARNING!

Some dust created by power sanding, sawing, grinding, and other construction activities contains chemicals known to cause cancer, birth defects, or other reproductive harm. Some examples of these chemicals are:

- Lead, from lead-based paints
- Crystalline silica, from bricks, cement, and other masonry products
- Arsenic and chromium, from chemically treated lumber

Your risk from these exposures varies, depending on how often you do this type of work. To reduce your exposure to these chemicals: work in a well-ventilated area, and use approved personal protective equipment, such as dust masks that are specially designed to filter out microscopic particles.



Northern Tool + Equipment Co.,
2800 Southcross Drive West
P.O. Box 1499 Burnsville, MN55337-0499
Made in China