

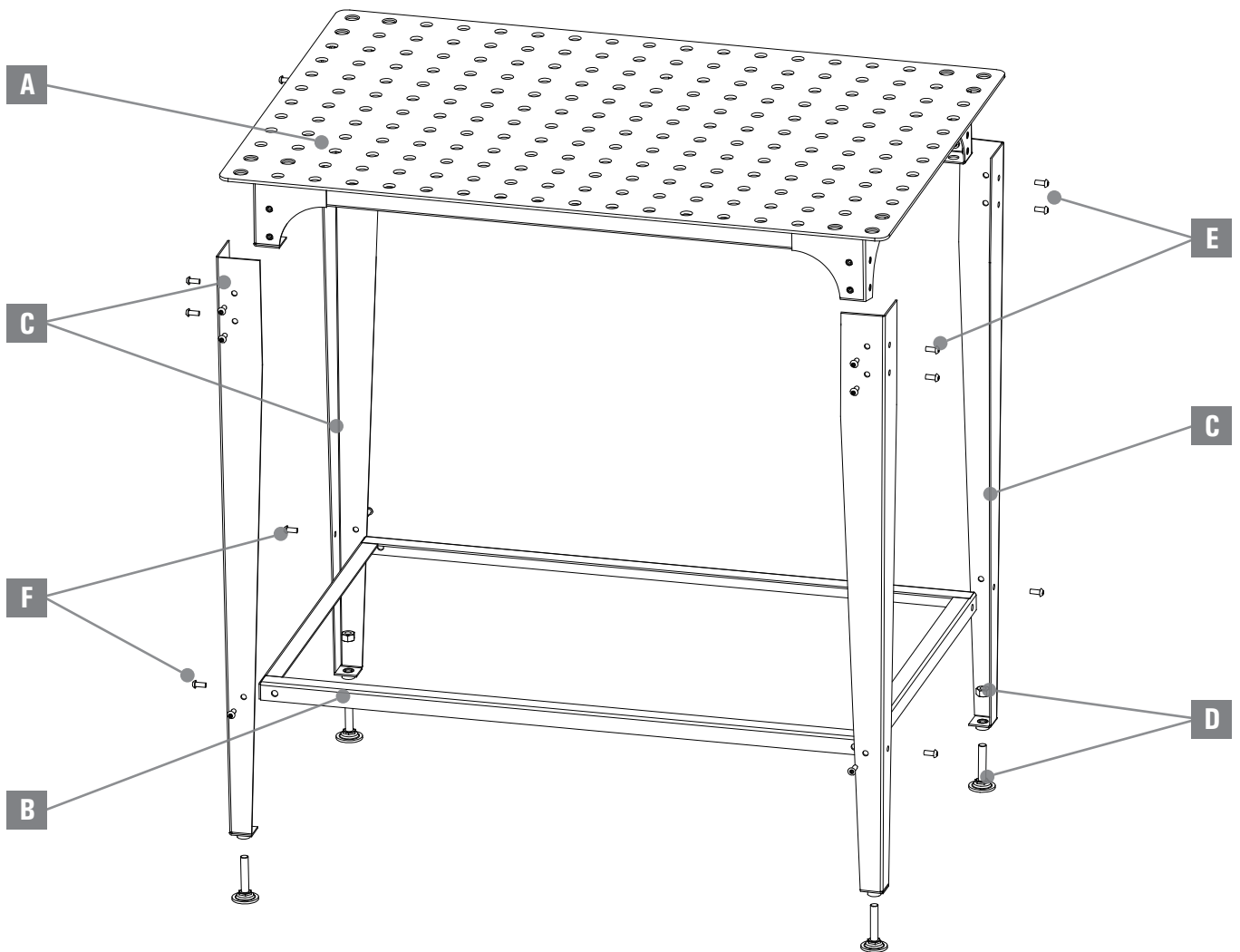
Assembly Instructions

FixturePoint Welding Table - Part No. TBH90604

The FixturePoint Welding Table features a total of 216 holes (.63"Ø, 16 mm) in a 2" grid pattern for location of components and the set-up of clamps. This is a complete Modular Fixturing System.

►► Parts List

No.	Item	Qty	No.	Item	Qty
A	Tabletop (with Welded Frame)	1	D	Leveling Foot with Jam Nut	4
B	Leg Brace (Welded)	1	E	Hex Socket Screw, M6x15 with Washer	16
C	Table Leg	4	F	Hex Socket Screw, M6x15 w/ Washers & Hex Nut	8



►► Assembly Instructions

Your new FixturePoint Table can be set up as needed to conveniently suit available work space.

Assembly Instructions

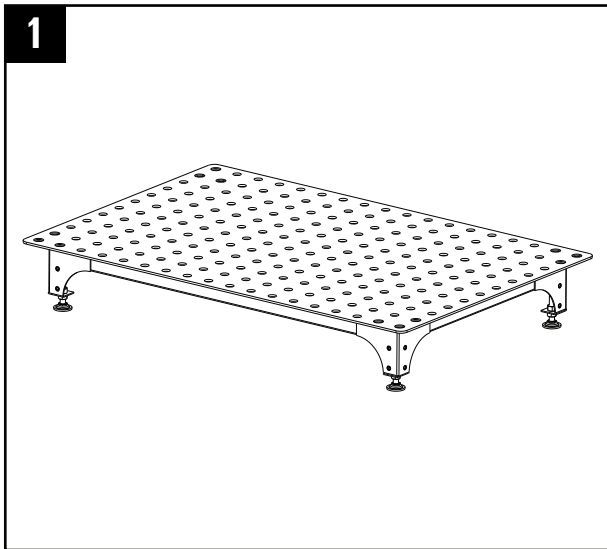


FixturePoint Welding Table - Part No. TBH90604

NOTE: The FixturePoint Table may be used in two configurations:

1. Tabletop only (set on top of level, sturdy surface), such as a workbench.
2. Full assembly, with four table legs (included) attached for stand-alone use.

The Four leveling feet (included) can be used with either configuration for proper leveling of the table.



Tabletop-only configuration - 1

To use in the tabletop-only configuration, place the FixturePoint Tabletop (**A**) upside down on a sturdy surface.

Screw the four Leveling Feet (**D**) into the bottom hole on each short leg of the Tabletop Frame. Place tabletop assembly in the upright position, and adjust Leveling Feet as needed to level the tabletop.

When the tabletop is level, turn upside down again, and tighten all four Jam Nuts to lock the Leveling Feet into position.



Stand-alone configuration - 2

If Leveling Feet are attached to the welded Tabletop Frame (short legs), remove the four feet and set aside.

Assemble Table Leg and Leg Brace (**B & C**). Place the Leg Brace in the upright position. Mount all four Table Legs to the frame using 8 pcs. of Hex Socket Screws, M6 x 15 with Washers and Hex Nuts (**F**).

Place the FixturePoint Tabletop (**A**) upside down on a sturdy surface. Set the leg assembly over the tabletop, making sure mounting holes on the leg assembly align with mounting holes on the welded Tabletop Frame.

Attach leg assembly to the tabletop using 16 pcs. of Hex Socket Screws, M6 x 15 with Washers (**E**). Tighten all screws. Screw Leveling Feet (**D**) into the bottom hole on each Table Leg.

Place the assembled table in the upright position. Adjust the Leveling Feet as needed to level the table. When the tabletop is level, turn upside down again, and tighten Jam Nuts to lock the Leveling Feet into position.



Affordable Modular Fixturing

FixturePoint Kits

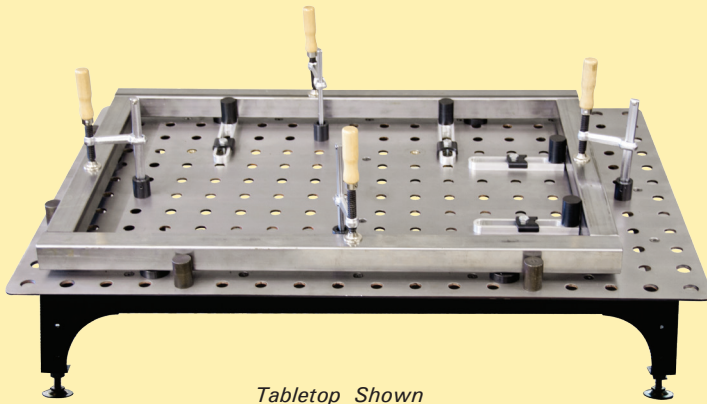
StrongHandTools[®]
Better Tools. Better Price.

**PACKAGE
DEAL**

Table + Clamps + Modular Fixturing Components

The FixturePoint System is ideal for the set-up of 2D frames. Use the FixturePoint Kits to get started right away, working comfortably, safely, and efficiently for improved work quality, and productivity!

FixturePoint Clamps and Components can be inserted into the 16 mm holes on the 36" x 24" tabletop for complete flexibility in Modular Fixturing.



Tabletop Shown

37895

- Complete Modular Fixturing Kit for the set-up of 4x **SQUARE** Tubing frames.

Kit includes:

FixturePoint Welding Table

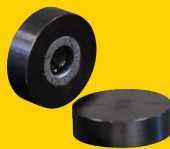
Clamps & Components Kit

- 4 pcs. Inserta Clamps
- 8 pcs. Magnetic Rests
- 4 pcs. Positioning Stops
- 4 pcs. Inserta Stops
- 4 pcs. Stop Bars
- 4 pcs. Threaded Adaptors



Inserta Clamps

Insert into any hole on the tabletop for fast hold-down clamping.



Magnetic Rests

Place anywhere on the table to elevate and level stock.



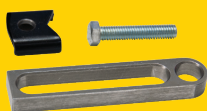
Positioning Stops

Mount on the tabletop to locate and stop stock.



Inserta Stops

Mount on the tabletop to locate and stop stock.



Stop Bars

Mount on the tabletop to locate and stop stock. Use with Threaded Adaptors.



Threaded Adaptors

Mount underneath tabletop to convert any table hole to a 3/8-16 threaded hole.



V-Blocks

Designed to hold round parts. Fit into the holes of the FixturePoint table, D-Stop bars and V-Spacers.



V-Spacers

Used in conjunction with V-Block.