

WARNING

Some dust created by power sanding, sawing, grinding, drilling, and other construction activities contains chemicals known to the State of California to cause cancer, birth defects or other reproductive harm. Some examples of these chemicals are:

- lead from lead-based paints,
- crystalline silica from bricks and cement and other masonry products, and
- arsenic and chromium from chemically-treated lumber.

Your risk from these exposures varies, depending on how often you do this type of work. To reduce your exposure to these chemicals: work in a well ventilated area, and work with approved safety equipment, such as those dust masks that are specially designed to filter out microscopic particles.

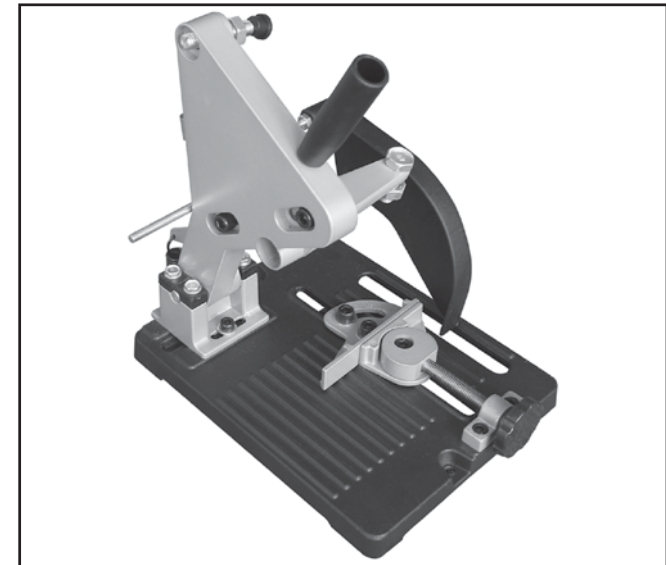
KLUTCH™

Distributed by
Northern Tool & Equipment Co., Inc.
Burnsville, MN 55306
NorthernTool.com
MadeinChina

KLUTCH™

4 1/2in. ANGLE GRINDER STAND

OWNER'S MANUAL



WARNING:

Read and understand **RULES FOR SAFE OPERATION** and instructions carefully before operating. Failure to follow the safety rules and other basic safety precautions may result in serious personal injury.

Using this product without safety glasses could cause severe bodily harm.

Item # 375354

Thank you very much for choosing a KLUTCH™ product!
For future reference, please complete the owner's record below:

Model: _____ Purchase Date: _____

Save the receipt, warranty and these instructions. It is important that you read the entire manual to become familiar with this product before you begin using it.

This machine is designed for certain applications only. The distributor cannot be responsible for issues arising from modification. We strongly recommend this machine is not modified and/or used for any application other than that for which it was designed. If you have any questions relative to a particular application, DO NOT use the machine until you have first contacted the distributor to determine if it can or should be performed on the product.

For technical questions please call 1-800-222-5381.

Intended Use:

This angle grinder stand is designed to hold most common 4 1/2in. or 5in. grinders with side handles without modifications. It turns your portable angle grinder into a metal-cutting chapsaw which makes it a perfect tool for cutting tubing, barstock and rebar.

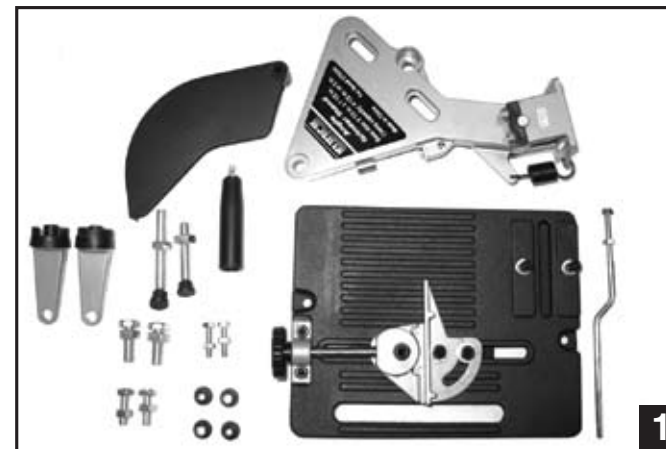
Specification:

Base size: 9 1/2in. x 7 1/2in. (24x19cm)
Clamp capacity: 4 1/2in. or 5in. angle grinder

Unpacking:

When unpacking, make sure that the item is intact and undamaged. The following should be supplied (See Figure 1). If any parts are missing or broken, please call Customer Support at 1-800-222-5381.

1 x Base	1 x Stand
1 x Safety Guard	1 x M10x68mm Bolt with nut
1 x M10x50mm Bolt with nut	2 x M10x30mm Bolt with nut
2 x M8x25mm Bolt with nut	2 x M6x25mm Bolt with nut
4 x Plastic Spacer	1 x Handle
2 x Jaw Clamp	1x lever



General Safety Rules:

- ⚠ WARNING! Read and understand all instructions.** Failure to follow all instructions listed below may result in electric shock, fire and/or serious injury.
- ⚠ WARNING! The warnings, cautions, and instructions discussed in this instruction manual cannot cover all possible conditions or situations that could occur. It must be understood by the operator that common sense and caution are factors which cannot be built into this product, but must be supplied by the operator.**

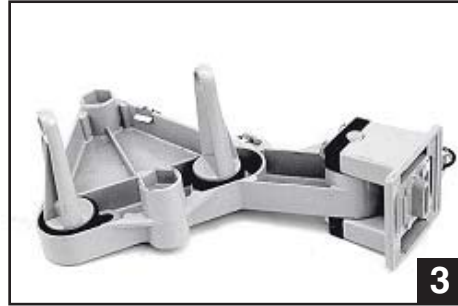
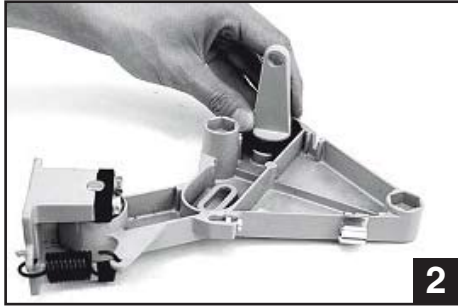
SAVE THESE INSTRUCTIONS

WORK AREA

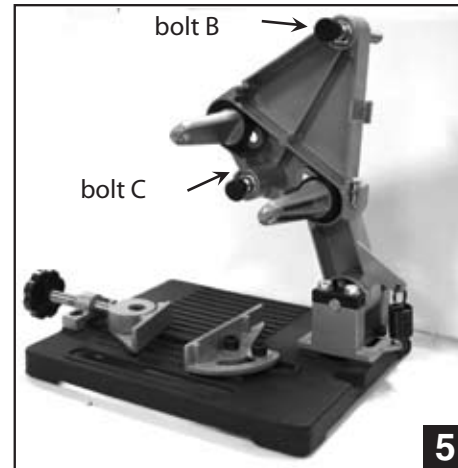
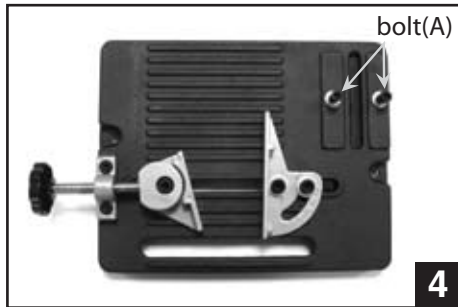
- **Keep work area clean**, free of clutter and well lit. Cluttered and dark work areas can cause accidents.
- **Do not use your tool where there is a risk of causing a fire or an explosion;** e.g. in the presence of flammable liquids, gasses, or dust. Power tools create sparks, which may ignite the dust or fumes.
- **Keep children and bystanders away while operating a power tool.** Distractions can cause you to lose control, so visitors should remain at a safe distance from the work area.
- **Be aware of all power lines**, electrical circuits, water pipes and other mechanical hazards in your work area, particularly those hazards below the work surface hidden from the operator's view that may be unintentionally contacted and may cause personal harm or property damage.
- **Be alert of your surroundings.** Using power tools in confined work areas may put you dangerously close to cutting tools and rotating parts.

Assembly:

1. Unscrew the two bolts on the jaw clamps and use these two bolts to fix the jaw clamps on the stand. Finger tighten the two bolts. Do not fully tighten them as you may need to adjust the distance between these two jaw clamps according to your angle grinder size (See Figure 2 and 3).



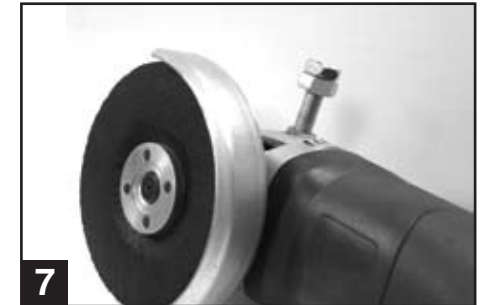
2. Unscrew the two bolts (A) that are already assembled on the base (See Figure 4).



3. Assemble the stand on the base by using the two bolts (A). Finger tighten these two bolts (See Figure 5).

4. Insert the M10x68mm bolt (with nut)(B) and M10x50mm bolt (with nut)(C) into the two holes on the stand. Finger tighten the two bolts (See Figure 5).

5. The 2 x M10x30mm Bolt with nut, 2 x M8x25mm Bolt with nut, 2 x M6x25mm Bolt with nut and 4x plastic spacer included in the pack are for assembling different sizes of angle grinders on the stand. Check the size of the holes on your angle grinder head for assembling the side handle. Pick the bolts that can fit these holes. If you pick the M10x30mm bolts, then you don't need to use the plastic spacer with them. If you pick the other bolts, then you will need to use the plastic spacer with them (See Figure 6 & 7).



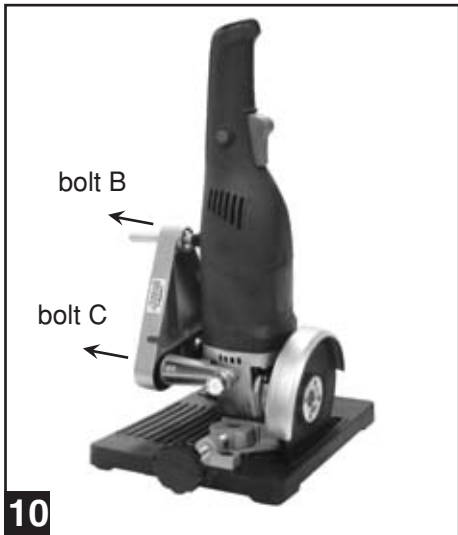
6. Put the head of your angle grinder between the two jaw clamps. You may need to adjust the distance between the two jaw clamps according to the size of the angle grinder head (See Figure 8). Use the suitable bolts you just picked to fix the angle grinder head on the jaw clamps. Use adjustable wrench (not included) to fully tighten the bolts.



7. Use hex key (not included) to fully tighten the two bolts on the jaw clamps (See Figure 9).



8. Push the angle grinder downwards to locate the angle grinder disc in the cutting slot on the base. Adjust bolt (B) and bolt (C) to make the disc located in the middle of the slot (See Figure 10).
9. Use hex key (not included) to fully tighten the two bolts that connect the stand with the base (See Figure 11).



10. Adjust bolt (B) and bolt (C) again to make sure that the disc can still locate in the middle of the cutting slot on the base.

11. Loosen the nut on the handle and assemble the handle on the stand (See Figure 12).

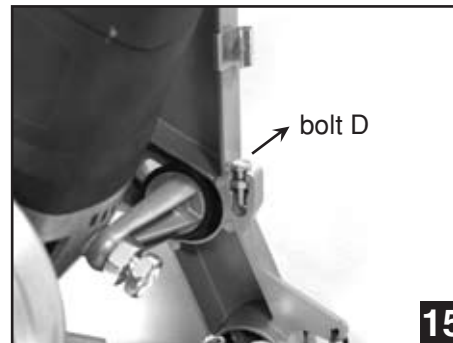


12. Unscrew the locking nut on the lever (See Figure 13).

13. Insert the lever into the hole on the safety guard and screw the locking nut on and fully tighten it. Fully tighten the other nut on the lever (See Figure 14).

14. Unscrew the bolt (D) on the stand (See Figure 15).

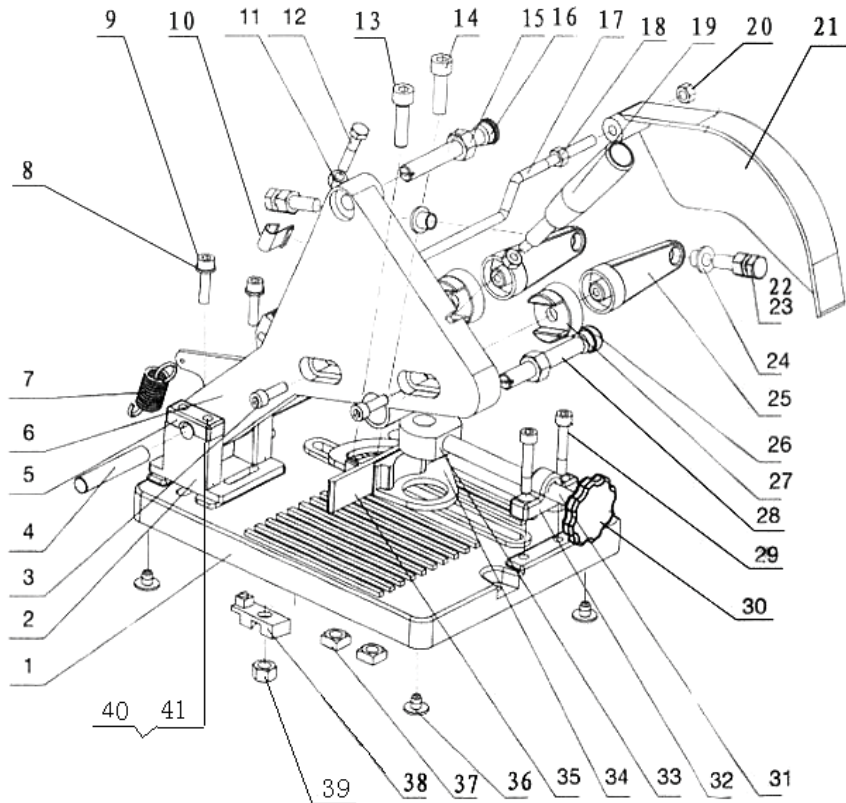
15. Insert the lever into the hole on the stand (See Figure 16).



16. Reassemble the bolt (D) on the stand and fully tighten it by using an adjustable wrench (not included) (See Figure 17).



Parts Diagram:



Part#	Description	Specifications	Quantity
1	Base		1
2	Bracket		1
3	Hex screw	M8×14	2
4	Spindle	10×59	1
5	Flange		2
6	Stand		1
7	Spring		1
8	Washer	φ14×φ6.3×1.5	2
9	Hex screw	M6×16	2
10	Clip		1
11	Hex nut	M5	1
12	Bolt	M5×16	1
13	Hex screw	M8×30	1
14	Hex screw	M8×25	1
15	Hex nut	M10	2
16	Bolt		1
17	Lever		1
18	Hex nut	M6	2
19	Handle		1
20	Hex nut	M6	1
21	Safety guard		1
22	Bolt	M6×25	2
23	Bolt	M8×25 M10×30	4
24	Spacer	φ6 φ8	2
25	Jaw clamp		2
26	Bolt		1
27	Spacer		2
28	Hex nut	M10×75	
29	Hex nut	M6×12	2
30	Knob		1
31	Screw	M10×90	1
32	Small base		1
33	Round plate		1
34	Movable plate		1
35	Angle plate		1
36	foct		4
37	Square nut	M8	2
38	Pointer		1
39	Hex nut	M8	2
40	Bolt	M6×20	4
41	Washer	φ12×φ6.3×1	4