

SINCE 1839

BRINLY

SINCE 1839

BRINLY

OWNER'S MANUAL

LAWN AERATOR

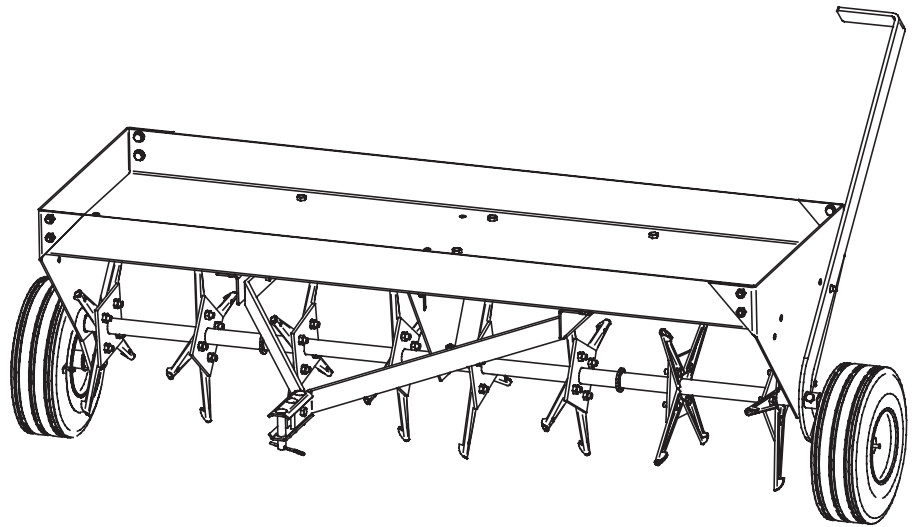
MODEL:

PA-40 BH

PA-48 BH

- Assembly
- Installation
- Operation
- Repair Parts

For use with Riders
and Lawn/Garden Tractors



For the latest product updates and setup tips:

Visit us on the web!
www.brinly.com

Important: This manual contains information for the safety of persons and property. Read it carefully before assembly and operation of the equipment!

L-1762-BH-02

CONGRATULATIONS on your new Brinly-Hardy Lawn Aerator. It has been designed, engineered, and manufactured to give you the best possible dependability and performance.

Should you experience any problem you can not easily remedy, please do not hesitate to contact our knowledgeable customer service department toll-free at 1-877-728-8224. We have competent, well trained technicians and the proper tool to service or repair your Aerator.

CUSTOMER RESPONSIBILITIES

Please read and retain this manual. Familiarize yourself with the entire manual before beginning and verify that all hardware is present. And please, Observe the "Safety Rules". Follow a regular schedule in maintaining, caring-for and using your Coring Aerator.

The instructions will enable you to assemble and maintain your Aerator properly. Always observe the "SAFETY RULES".

TABLE OF CONTENTS

SAFETY RULES	2
HARDWARE.....	3
PARTS REFERENCE	4
PARTS LIST	5
ASSEMBLY	5-9
OPERATION.....	10
MAINTENANCE.....	10
WARRANTY.....	11



RULES FOR SAFE OPERATION

- Know controls and how to stop quickly, READ THE OWNER'S MANUAL.
- Do not allow children to operate the vehicle, do not allow adults to operate without proper instruction or without having read the owner's manual.
- Do not carry passengers. Keep children and pets a safe distance away.
- Always wear substantial footwear. Do not wear loose fitting clothing that can get caught in moving parts.
- Keep your eyes and mind on your tractor/attachment and area being covered. Do not let other interests distract you.
- Stay alert for holes in the terrain and other hidden hazards.
- Do not drive close to creeks, ditches and public highways.
- Watch out for traffic when crossing or near roadways.
- When using any attachment, don't allow anyone near the vehicle while in operation.
- Keep the vehicle and attachment in good operating condition and keep safety devices in place.
- Keep all nuts, bolts and screws tight to be sure the equipment is in safe working condition.
- The vehicle and attachment should be stopped and inspected for damage after striking a foreign object. The damage should be repaired before restarting and operating the equipment.
- See tractor equipment owner's manual for safe operation of the equipment.



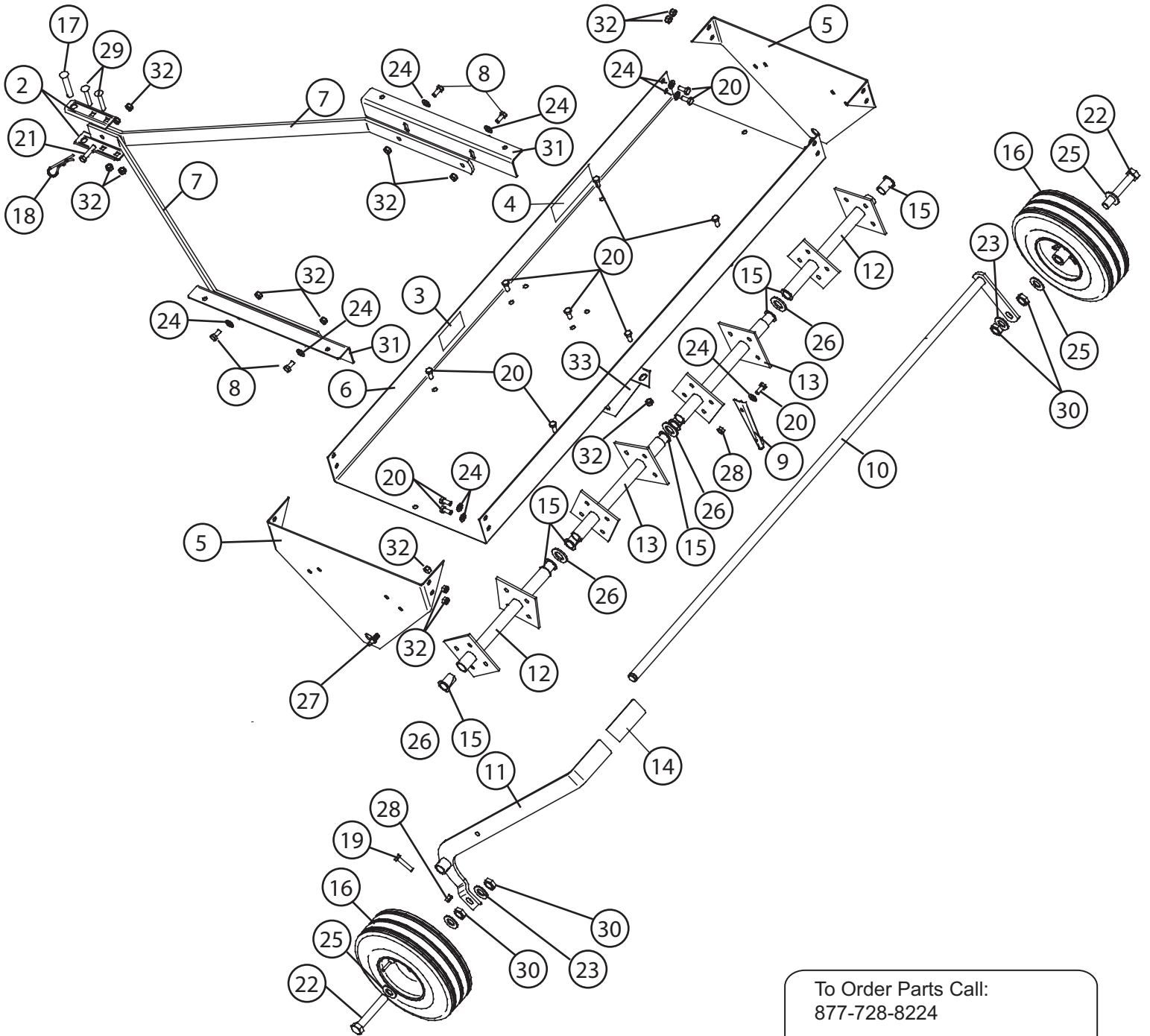
This symbol will help to point out important safety precautions throughout this manual. It means - ATTENTION! BECOME ALERT! Your safety is involved.

HARDWARE REFERENCE

Tools Required for Assembly:

- * $\frac{1}{2}$ " wrench (2)
- * Pair slip joint pliers
- * Tape Measure
- * $\frac{15}{16}$ " wrenches (2)

NOTE: Socket and Ratchet Set will speed assembly.



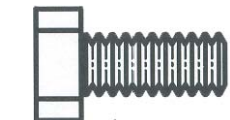
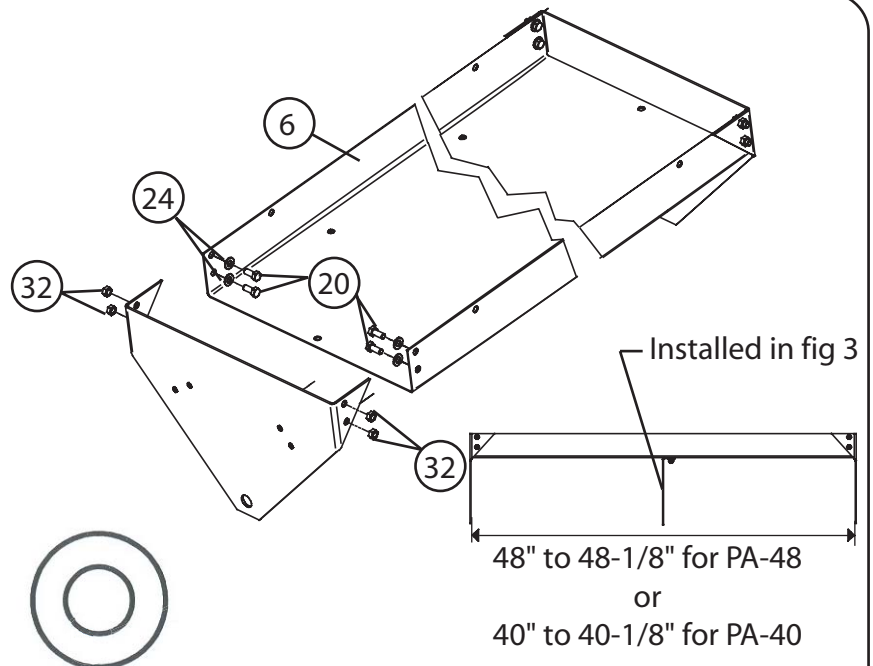
To Order Parts Call:
877-728-8224

Visit us on the web:
www.brinly.com

Parts List

REF. NO.	QTY.	PART NO.	QTY.	PART NO.	DESCRIPTION
		PA-48		PA-40	
1	1	L-1762-BH	1	L-1762-BH	Instructions
2	2	R-892-10	2	R-892-10	Clevis
3	1	R-1946	1	R-1946	Caution Label
4	1	B-5925	1	B-5922	Logo Decal
5	2	B-4901-10	2	B-4851-10	Side Plate
6	1	B-6257-10	1	B-6173-10	Tray
7	2	B-6259-10	2	B-6259-10	Tow Bar
8	4	2M1016P	4	2M1016P	Hex Bolt, 5/16" x 1"
9	32	B-4855-10	24	B-4855-10	Plugging Spoon
10	1	B-5702-10	1	B-5700-10	Axle Assembly
11	1	B-5698-10	1	B-5698-10	Lift Handle Assembly
12	2	B-4862-10	2	B-5309-10	End Tube Assembly
13	2	B-4865-10	1	B-5311-10	Center Tube Assembly
14	1	B-4867	1	B-4867	Handle Grip
15	8	B-4866	6	B-4866	3/4" Nylon Bearing
16	2	B-6174	2	B-6174	Transport Wheel
17	1	B-3861	1	B-3861	Hitch Pin
18	1	D-146P	1	D-146P	Hair Pin Cotter
19	1	2M1024P	1	2M1024P	Hex Bolt, 5/16" x 1-1/2"
20	48	2M1012P	37	2M1012P	Hex Bolt, 5/16" x 3/4"
21	1	2M1020P	1	2M1020P	Hex Bolt, 5/16" x 1-1/4"
22	2	2M2064P	2	2M2064P	Hex Bolt, 5/8" x 4"
23	2	40M2000P	2	40M2000P	Lock Washer, 5/8"
24	45	45M1111P	12	45M1111P	Flat Washer, 5/16"
25	4	45M2121P	4	45M2121P	Flat Washer, 5/8"
26	6	B-676P	6	B-676P	Mach. Bushing, 3/4"
27	1	B-3307-S	1	B-3307-S	Transport Lock Pin
28	33	B-1674P	25	B-1674P	Hex Lock Nut, 5/16"
29	2	11M1036P	2	11M1036P	Carriage Bolt, 5/16" x 2-1/4"
30	4	30M2000P	4	30M2000P	Hex Nut, 5/8"
31	2	B-6258-10	2	B-6171-10	Mount Bracket
32	24	B-4786	21	B-4786	Nylon Lock Nut, 5/16"
33	1	B-4902-10	1		Center Plate

Figure 1.



20
Hex Head Bolt, 5/16" x 3/4"
Qty. 4

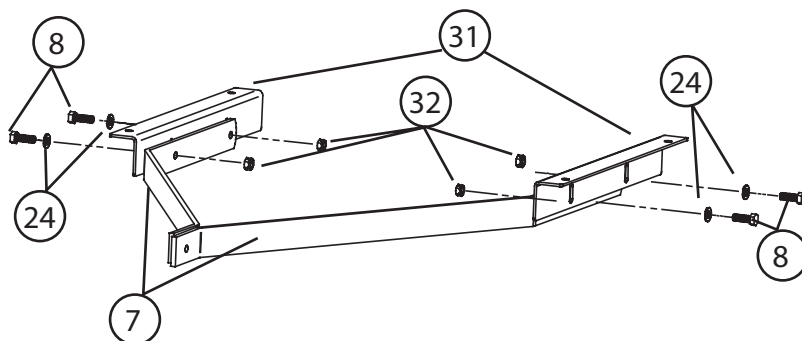


32
Nylon Lock Nut, 5/16"
Qty. 4



24
Flat Washer, 5/16"
Qty. 4

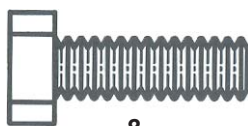
Figure 2.



32
Nylon Lock Nut, 5/16"
Qty. 4

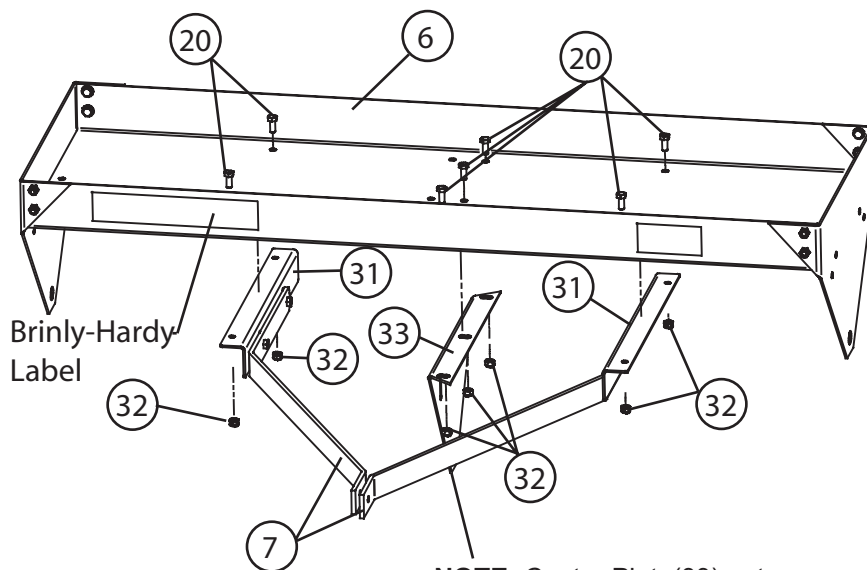


24
Flat Washer, 5/16"
Qty. 4

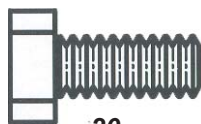


8
Hex Bolt, 5/16" x 1"
Qty. 4

Figure 3.



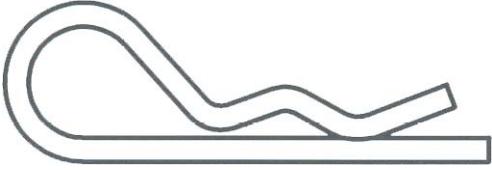
32
Nylon Lock Nut, 5/16"
Qty. 7



20
Hex Head Bolt, 5/16" x 3/4"
Qty. 7

NOTE: Center Plate(33) not
in PA-40.

Figure 4.



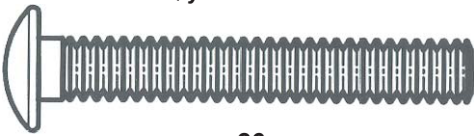
18
Hairpin Cotter, 1/8"
Qty. 1



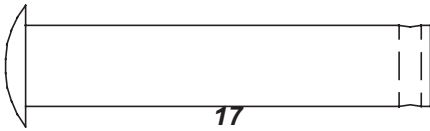
21
Hex Bolt, 5/16" x 1-1/4"
Qty. 1



32
Nylon Lock Nut, 5/16"
Qty. 3



29
Carriage Bolt, 5/16" x 2-1/4"
Qty. 2



17
Hitch Pin, 1/2" x 2-1/2"
Qty. 1

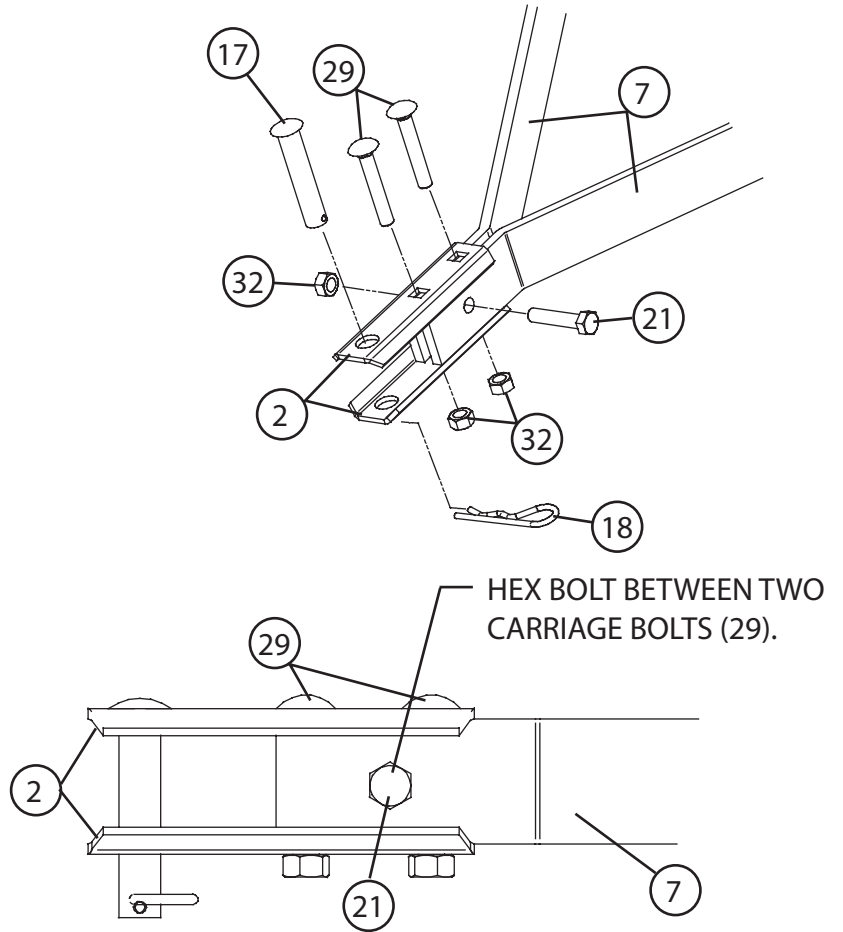
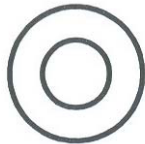


Figure 5.

NOTE: Center Tube Assembly (13) shown.

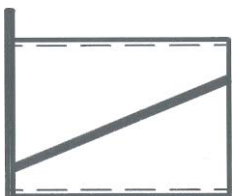


24
Flat Washer, 5/16"
Qty. 4

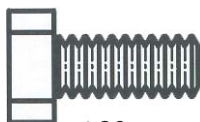


28
Lock Nut, 5/16"
Qty. 4

NOTE: Not used on PA-40.



15
Nylon Bearing, 3/4" I.D.
Qty. 2



20
Hex Head Bolt, 5/16" x 3/4"
Qty. 4

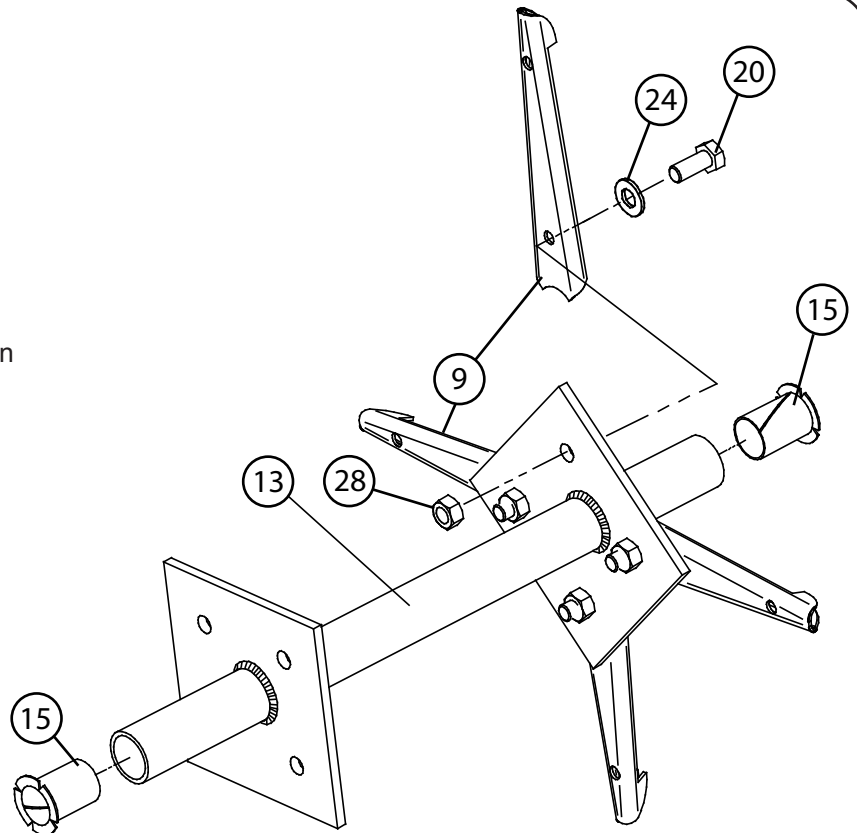
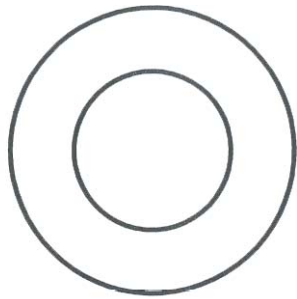
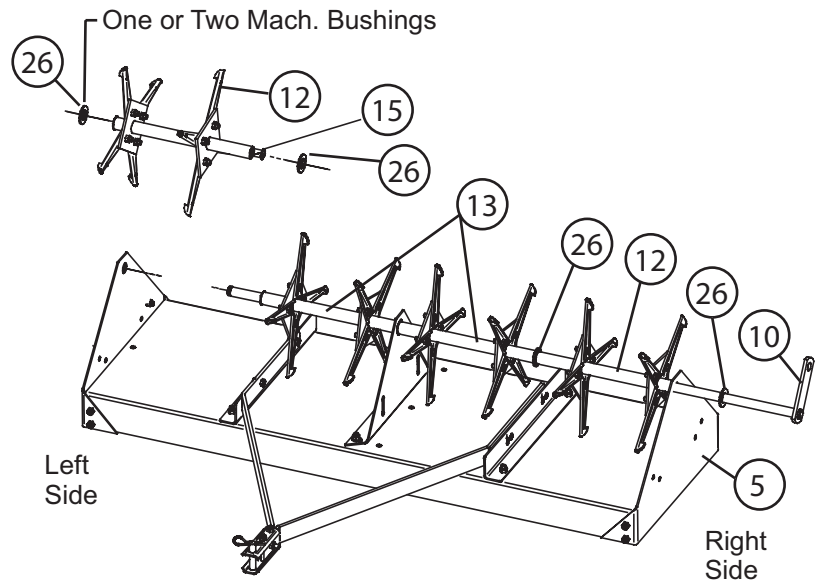


Figure 6.

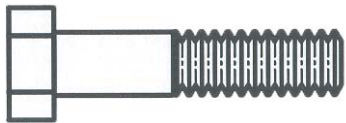


26
Mach. Bushing, 3/4"
Qty. 6



IMPORTANT: Make sure Nylon Bearings (15) are inside Tube Assemblies. See Fig. 5

Figure 7.

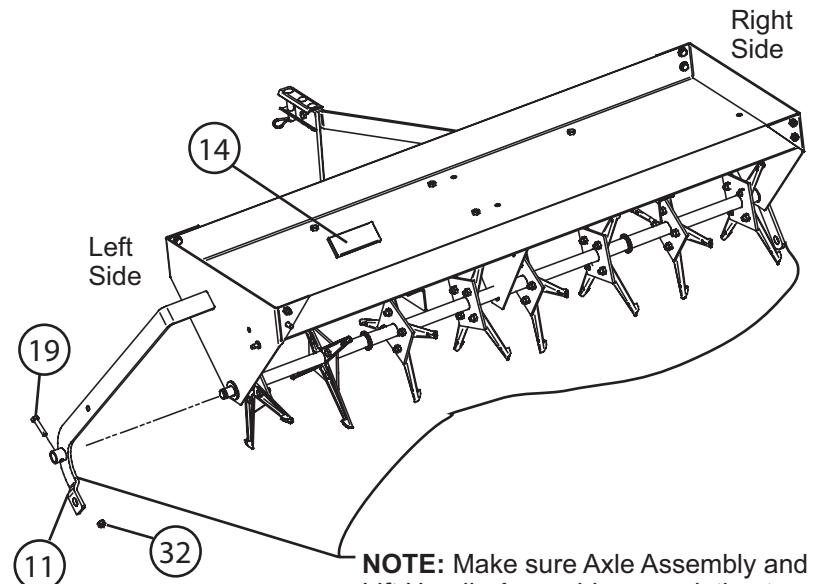


19
Hex Bolt, 5/16" x 1-1/2"
Qty. 1



32
Nylon Lock Nut, 5/16"
Qty. 1

14
Handle Grip, 1/4" x 1-1/2"
Qty. 1
(NOT TO SCALE)



NOTE: Make sure Axle Assembly and Lift Handle Assembly are pointing to the rear.

Figure 7.

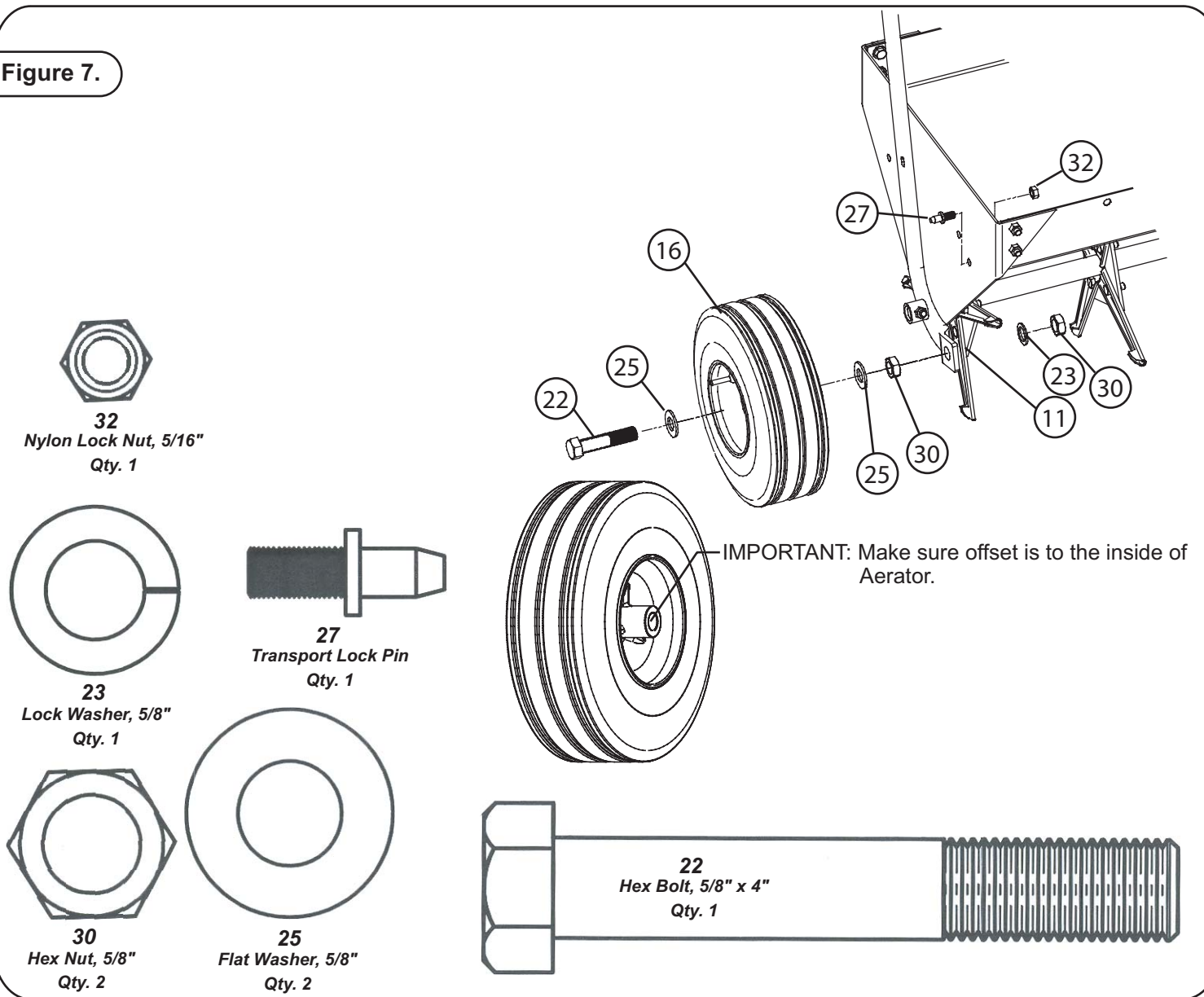


Figure 8.

