

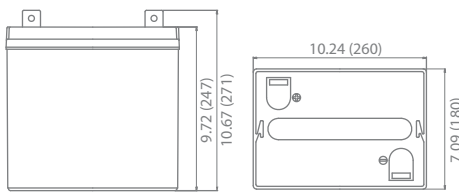
**Specification**

<b>Nominal Voltage</b>	6 volts		
<b>Nominal Capacity</b>	77° F (25° C)		
20-hr. (10.0 A)	200 Ah		
10-hr. (18.6 A)	186 Ah		
5-hr. (34.0 A)	170 Ah		
1-hr. (120 A)	120 Ah		
<b>Approximate Weight</b>	62.4 lbs (28.3 kgs)		
<b>Internal Resistance (approx.)</b>	4 mΩ		
<b>Shelf Life</b> (% of normal capacity at 68° F (20° C))			
3 Months	6 Months	12 Months	
91%	83%	64%	
<b>Temperature Dependency of Capacity</b>	(20 hour rate)		
104° F	77° F	32° F	5° F
102%	100%	85%	65%
<b>AGM Operational Temperature</b>			
Charge	32°F to 104°F (0°C to 40°C)		
Discharge	5°F to 113°F (-15°C to 45°C)		
<b>AGM Storage Temperature</b>	5°F to 104°F (-15°C to 40°C)		



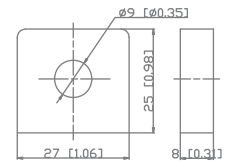
<b>Charge Method</b> (Constant Voltage)		
<b>Cycle Use</b> (Repeating Use)		
Initial Current	60 A or smaller	
Control Voltage	7.20 - 7.5 V	
<b>Float Use</b>		
Control Voltage	6.8 - 6.9 V	

**Physical Dimensions: in (mm)**

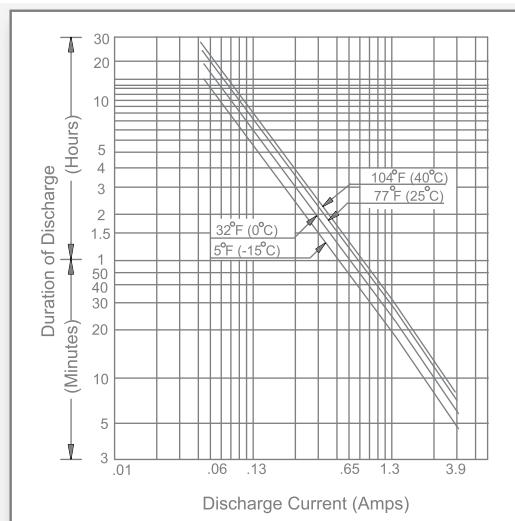


**L:** 10.24in (260 mm)  
**W:** 7.09in (180 mm)  
**H:** 9.72in (247 mm)  
**TH:** 10.67in (271 mm)  
 Tolerances are +/- 0.04 in. (+/- 1mm) and +/- 0.08 in. (+/- 2mm) for height dimensions. All data subject to change without notice.

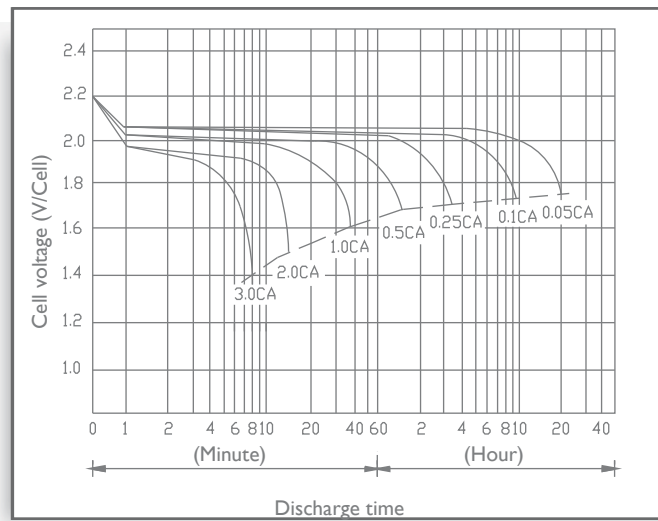
**Terminals**



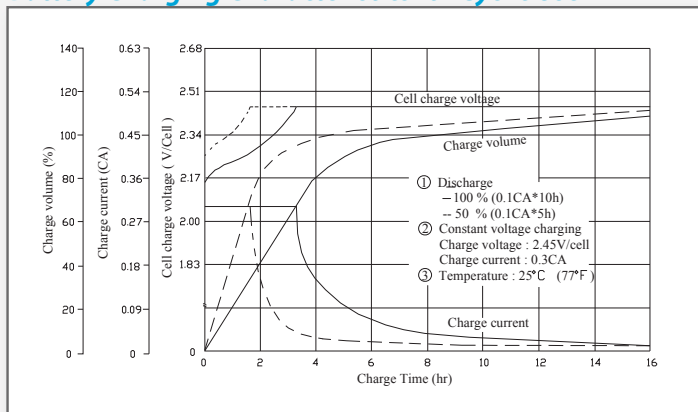
**Discharge Time vs. Discharge Current**



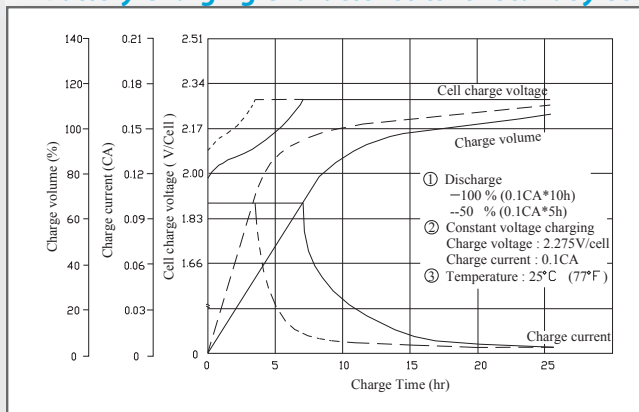
**Discharge Characteristics**



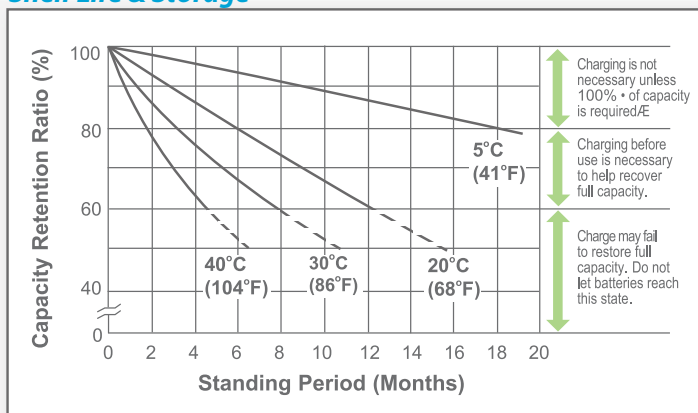
## Battery Charging Characteristics for Cyclic Use



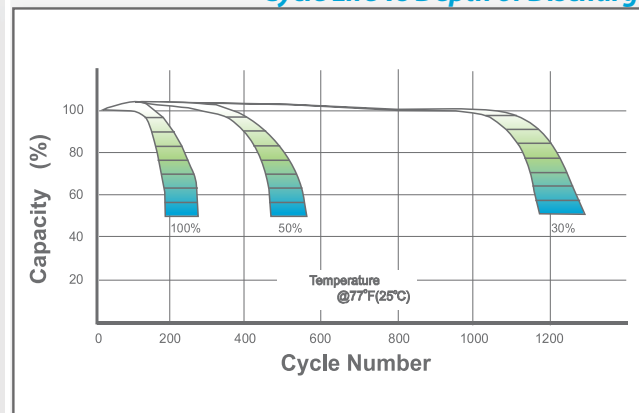
## Battery Charging Characteristics for Standby Use



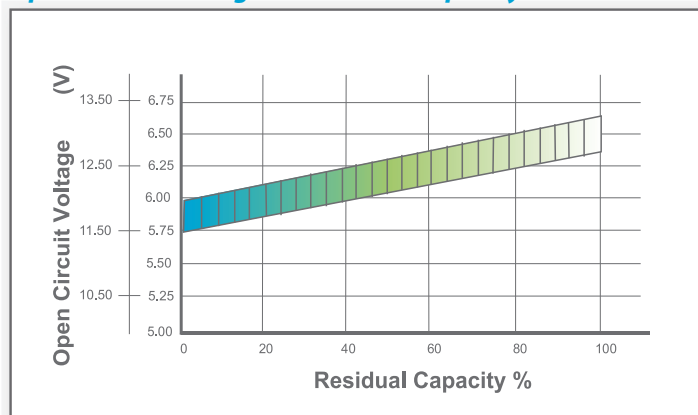
## Shelf Life & Storage



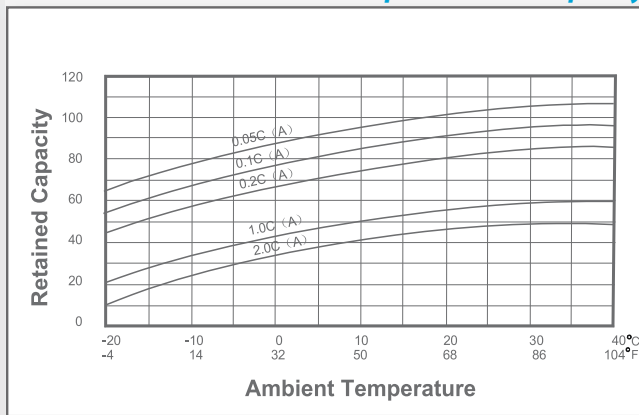
## Cycle Life vs Depth of Discharge



## Open Circuit Voltage vs Residual Capacity



## Effect of Temperature on Capacity



## Charge Current & Final Discharge Voltage

Application	Charge Voltage(V/Cell)			Max.Charge Current	Final Discharge Voltage V/Cell	Discharge Current(A)	1.75	1.70	1.60	1.30
	Temperature	Set Point	Allowable Range							
Cycle Use	25°C(77°F)	2.45	2.40~2.50	0.35C	1.75	0.2C>(A)	0.2C<(A)<0.5C	0.5C<(A)<1.0C	(A)>1.0C	
Standby	25°C(77°F)	2.325	2.30~2.35							