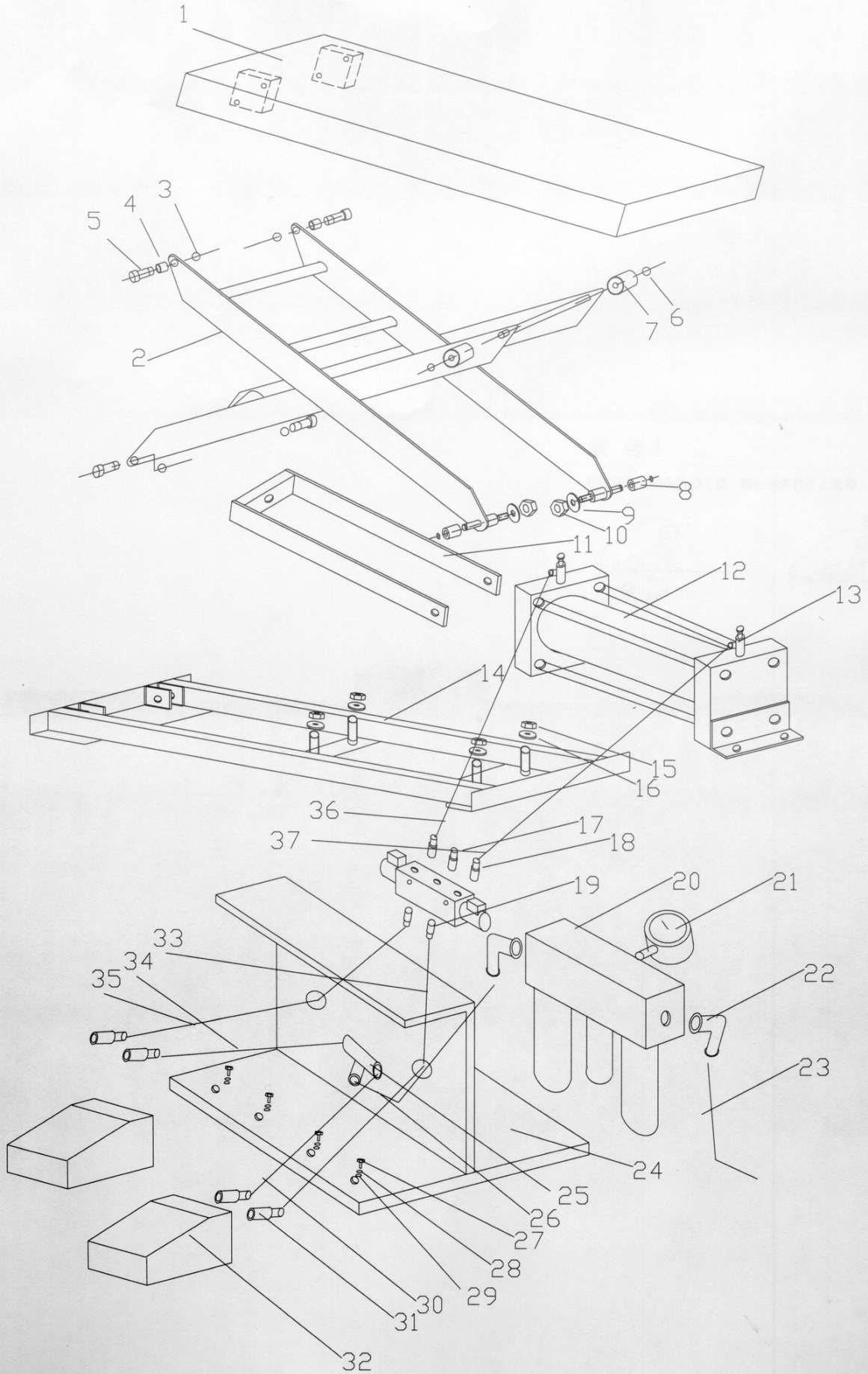


AT-10 PNEUMATIC LIFT TABLE



AT-10 PNEUMATIC LIFT TABLE

No.	Description	Q'ty	No.	Description	Q'ty
1	Table	1	31	Air Pipe Joint	2
2	Link Assembly	1	32	Foot Pedal Valve	2
3	C-ring	4	33	Air Pipe (4)	1
4	Bushing	4	34	Air Pipe (5)	1
5	Shaft	4	35	Air Pipe (6)	1
6	C-ring	4	36	Air Pipe (7)	1
7	Up Roller Guide	2	37	Air Pipe (8)	1
8	Down Roller Guide	2			
9	Flat Washer	2			
10	Hex Cap Nut	2			
11	Draw Rod Assembly	1			
12	Air Cylinder Assembly	1			
13	"L" Type Joint	2			
14	Frame	1			
15	Hex Cap Nut	2			
16	Flat Washer	2			
17	Silencer	1			
18	Pipe Joint (1)	2			
19	Pipe Joint (2)	2			
20	Air-Source Three-point Combination	1			
21	Pressure Meter	1			
22	Angel Ruler Joint	2			
23	Air Pipe	1			
24	Operate Assembly	1			
25	Three-way Joint	1			
26	Air Pipe (2)	1			
27	Semicircle Screw	4			
28	Spring Washer	4			
29	Flat Washer	4			
30	Air Pipe (3)	1			