

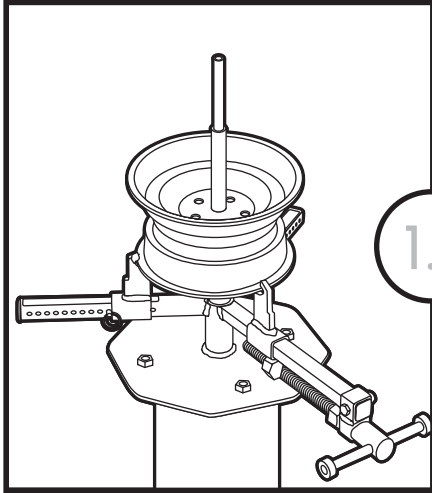
***OPERATING
& ASSEMBLY
INSTRUCTIONS***
CH-22 MULTI-TIRE CHANGER



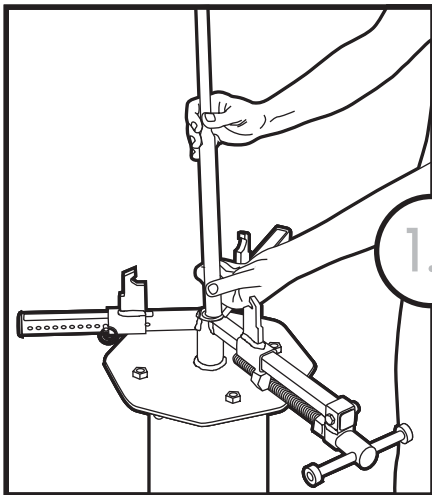
CH-22 MULTI-TIRE CHANGER

INFORMATION-GENERAL

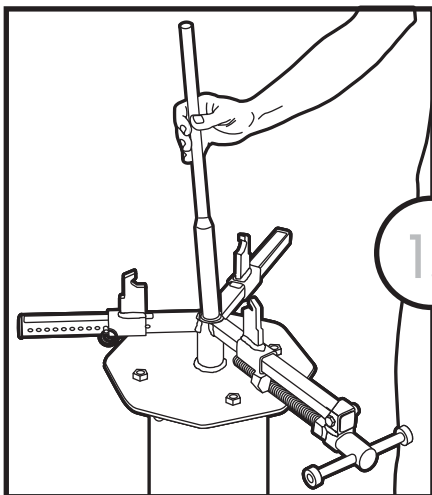
S E C T I O N O N E



The CH-22 will accommodate all wheel sizes 4" - 16.5" diameter. The wheel is held in place by two sliding jaw clamps and one adjustable jaw clamp. Two center posts (with four shaft sizes) are provided for either bearing center or hub center wheels.



When servicing bearing-center wheels use the center shaft that matches the bearing size of the wheel; 1/2", 5/8" or 3/4". Once the wheel is positioned insert the appropriate post into the wheel bearing.

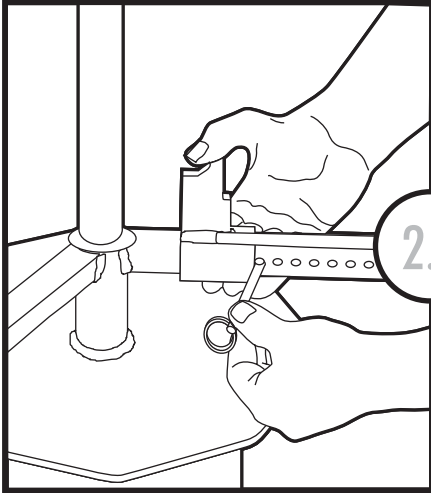


When servicing hub-center wheels the large diameter post is used. Insert post directly into center of arms, once the wheel is positioned.

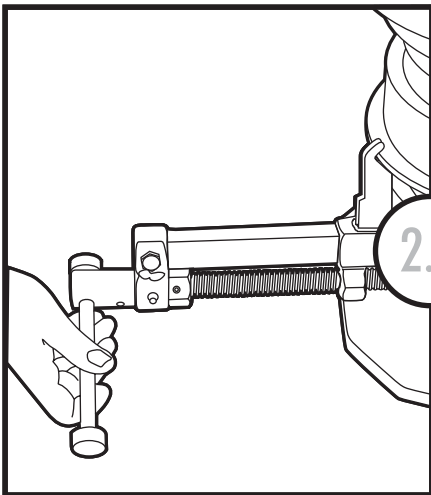
CH-22 MULTI-TIRE CHANGER

INSTRUCTION-GENERAL

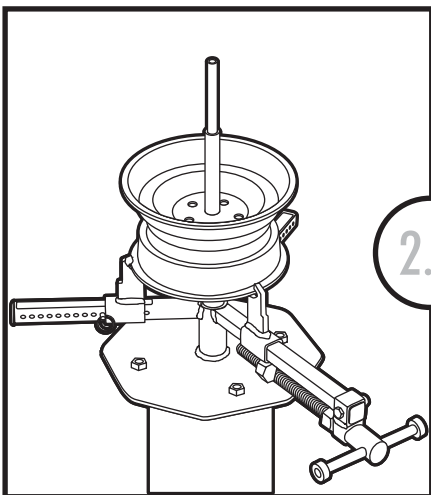
S E C T I O N T W O



Sliding clamps are positioned to proper wheel size as indicated by numerical marks on each arm. Pins are inserted to the outside of clamps. Snug the 2 clamps against the pins.



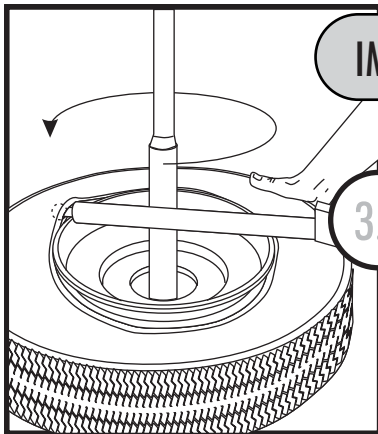
The adjusting clamp is positioned to a size larger than wheel to be serviced by rotating crank arm.



Wheel is placed in position. Wheel rim is pushed against the two sliding clamps. Insert the appropriate center post into the wheel center seating it into the center hole of the changer. Tighten the adjustable clamp to secure wheel.



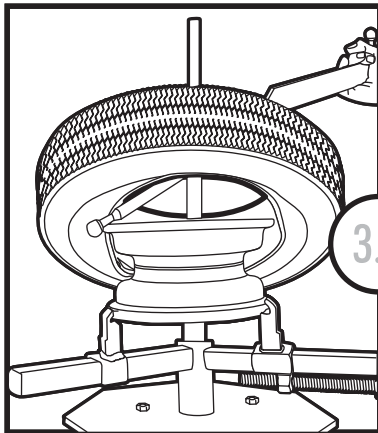
It is important to use a good tire lubricant while mounting and dismounting, (Lube & Rust Inhibitor part #22.11007), and be sure that the bead is in the drop center of the rim during this process. In the unlikely event that you encounter difficulty in rotating the Mongoose easily use a small tire iron (#22.3877) to spoon the tire around at the point of greatest resistance.



IMPORTANT -ALWAYS LUBE THE TIRE!

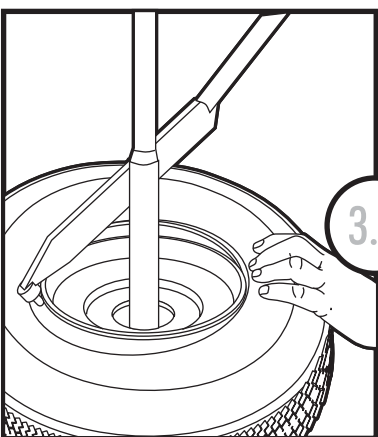
3.1

Demount deflated tire using the "rod-end" of the Mongoose tire tool. The ball end is pushed under the top bead and rested on the rim as illustrated. While holding the mongoose against the center post with one hand, and lifting up on the tire with the other, rotate the tool full circle.



3.2

Demount the bottom bead in the same manner as above. The angle of the mongoose tool against the center post can be varied to accommodate operator height or rim depth without affecting ease of operation.

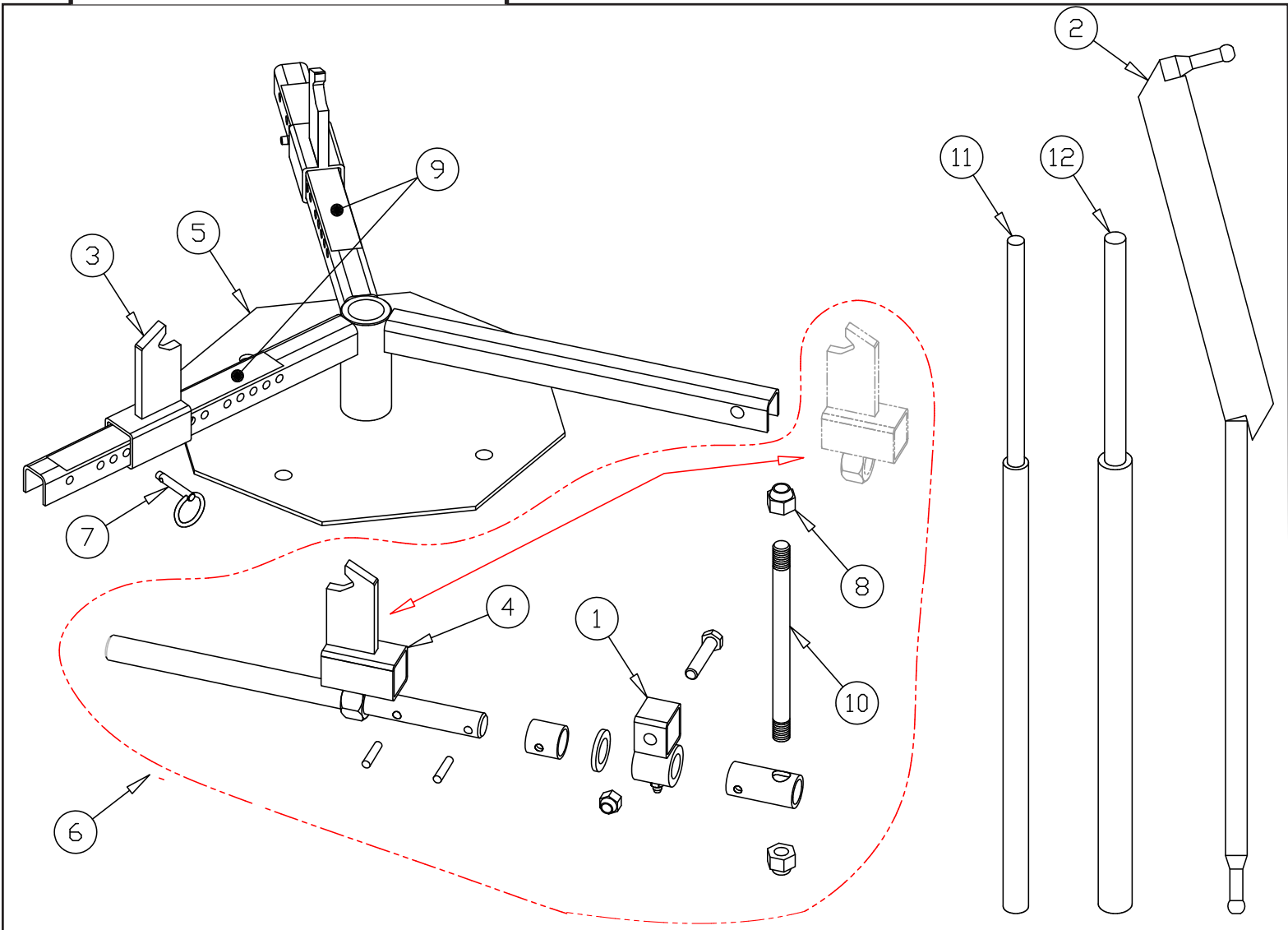


3.3

Mounting the tire uses the "flat-end" of the Mongoose tire tool. While applying pressure to the low side of the tire (always facing the operator), place the ball-end between the rim and bead. With the flat side against the center post rotate the tool full circle for both bottom and top beads.

CH-22 MULTI-TIRE CHANGER

8.2010



Repair Parts

No.	Part No.	Qty	Description
1.	Screw Anchor Weld	REF	6024
2.	Mongoose Tire Tool	1	CH.4
3.	Jaw Weld	2	22.10063
4.	Jaw Frame Adjusting Weld	REF	22.10065
5.	Jaw Frame Weld	1	22.11062
6.	Threaded Rod Assembly	1	22.41002
7.	Pin, Cotterless 1/4 x 1-1/4	2	22.144
8.	Nut Hex 1/2-13 Nylok	REF	22.11004
9.	Decal-Wheel Size Indicator	2	4983
10.	Tightening Rod Threaded	REF	22.11006
11.	Center Post Small	1	22.380
12.	Center Post Large	1	22.3872

Order parts from your distributor or jobber. When ordering parts always give the following information: Part Number, Description and Serial Number of Your Machine.



3451 South 40th Street • Phoenix, Arizona 85040 • Toll Free 800.223.4540 • Arizona 602.437.5020 • Fax 602.437.5025



3451 South 40th Street • Phoenix, Arizona 85040 • Toll Free 800.223.4540 • Arizona 602.437.5020
www.tsissg.com