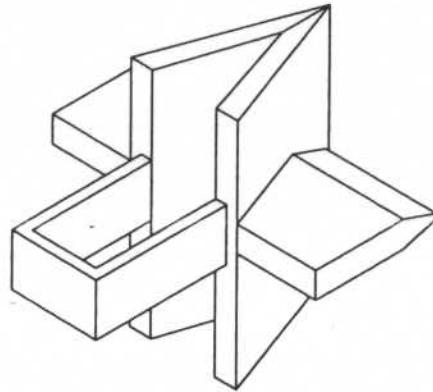




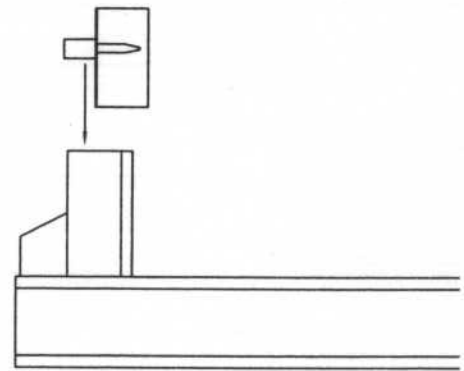
4-WAY WEDGE

ITEM #3062 & #3063

MN3062



Place the four-way wedge over the top of the log splitter wedge.



CAUTION: DO NOT FULLY EXTEND YOUR CYLINDER or the beam slide will hit the four-way wedge. Move the control lever to the neutral or reverse position prior to making contact with the wedge.

