



MINI BELT SANDER

OWNER'S MANUAL



WARNING:

Read carefully and understand all **ASSEMBLY AND OPERATION INSTRUCTIONS** before operating. Failure to follow the safety rules and other basic safety precautions may result in serious personal injury.

Item# 30092

Thank you very much for choosing an Iron-ton product! For future reference, please complete the owner's record below:

Model: _____ Purchase Date: _____

Save the receipt, warranty and these instructions. It is important that you read the entire manual to become familiar with this product before you begin using it.

This machine is designed for certain applications only. The distributor cannot be responsible for issues arising from modification. We strongly recommend this machine not be modified and/or used for any application other than that for which it was designed. If you have any questions relative to a particular application, DO NOT use the machine until you have first contacted the distributor to determine if it can or should be performed on the product.

For technical questions please call **1-800-222-5381**.

INTENDED USE:

The Mini Belt Sander provides fast material removal. The conveniently located on/off switch allows for continuous operation, reducing fatigue. A simple one lever operation makes belt changing easy.

TECHNICAL SPECIFICATIONS:

Voltage: 120V, 60Hz, 2.2Amps

No-load Speed: 2110ft./min.

Sanding Belt Size: 12in. x1-1/2in.

GENERAL SAFETY RULES



WARNING: Read and understand all instructions. Failure to follow all instructions listed below may result in serious injury.



CAUTION: Do not allow persons to operate or assemble this Mini Belt Sander until they have read this manual and have developed a thorough understanding of how the Mini Belt Sander works.



WARNING: The warnings, cautions, and instructions discussed in this instruction manual cannot cover all possible conditions or situations that could occur. It must be understood by the operator that common sense and caution are factors which cannot be built into this product, but must be supplied by the operator.

SAVE THESE INSTRUCTIONS

IMPORTANT SAFETY CONSIDERATION

MINI BELT SANDER USE AND CARE

Do not modify the Mini Belt Sander in any way. Unauthorized modification may impair the function and/or safety and could affect the life of the equipment. There are specific applications for which the Mini Belt Sander was designed.

Always check of damaged or worn out parts before using the Mini Belt Sander. Broken parts will affect the Mini Belt Sander operation. Replace or repair damaged or worn parts immediately.

Store idle Mini Belt Sander. When Mini Belt Sander is not in use, store it in a secure place out of the reach of children. Inspect it for good working condition prior to storage and before re-use.

Unplug the sander before changing accessories. Accidental start-ups may occur if the sander is plugged in while changing an accessory.

Disposing of dust. Be extremely careful of dust disposal, materials in fine particle form may be explosive. Do not throw sanding dust on an open fire. Spontaneous combustion, may in time, result from a mixture of oil or water with dust particles.

Always wear eye protection and a dust mask for dusty applications and when sanding overhead. Sanding particles can be absorbed by your eyes and inhaled easily and may cause health complications.

Use special precautions when sanding chemically pressure treated timber, paint that may be lead based, or any other materials that may contain carcinogens. A suitable breathing respirator and protective clothing must be worn by all persons entering the work area. Work area should be sealed with plastic sheeting and persons not protected should be kept out until work area is thoroughly cleaned.

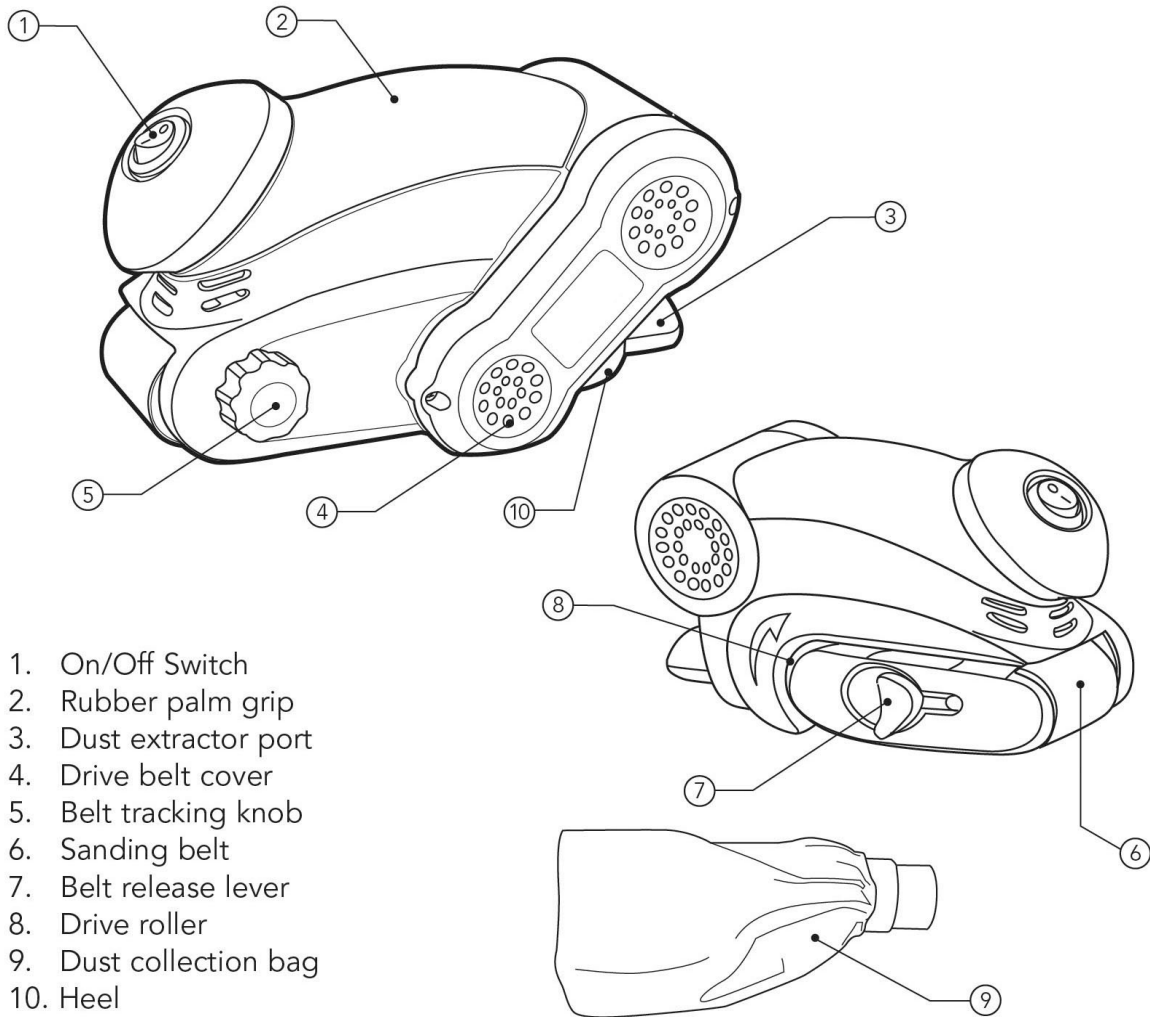
Do not 'wet sand' with this sander. Liquids entering the motor housing are an electrical shock hazard.

Keep fingers and clothing away from the belt. They could get cut or wedged between the pulley, belt and motor housing.

Properly adjust tracking of belt to avoid it overhanging the housing. A running belt overhanging its housing can cause severe lacerations.

Keep the cord to the side away from pulleys. The cord can be dragged into the belt housing and become entangled with the pulleys.

OPERATION



BE SURE TO DISCONNECT THE BELT SANDER FROM THE POWER SUPPLY BEFORE INSTALLING OR REMOVING THE SANDING BELTS

Removing and Installing Sanding Belts

TO REMOVE BELT:

1. Place the Mini Belt Sander on its left side with the belt release lever (7) facing upwards. Lift up and push the belt release lever (7) towards the front of the sander until the front pulley retracts and locks into the belt tension release mode.
2. With the Mini Belt Sander on its left side, you can easily remove the belt by easing both sides up simultaneously.

TO INSTALL BELT:

1. While the Mini Belt Sander is on its left side and the front pulley retracted and locked, insert the new belt around both pulleys and over the platen plate. Ensure the sanding belt is placed up to but not over the lip on the front pulley. If the belt has rotation direction markings, make sure the arrow on the inside of the belt is pointing in the direction of rotation as indicated on the housing. Failure to do so will cause the belt to break.
2. Once the belt is in place, return the belt tension release (7) lever back to its original position to tension the belt.

Switch

Your Mini Belt Sander is supplied with the On/Off switch (1). "0" indicates off. "1" indicates on. The On/Off switch (1) is located on the front of the Mini Belt Sander and allows continuous operation at a maximum of 380rpm.

TO SWITCH ON: Press the On/Off switch (1) to the "1" position. Ensure motor reaches maximum speed before applying the tool to the working surface.

TO SWITCH OFF: Press the On/Off switch (1) to the "0" position. Ensure the sanding belt stops turning before placing the tool onto work surface or bench top.

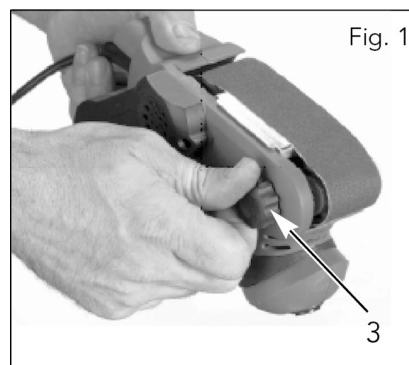


Warning! Prior to connecting the tool to the power supply, ensure the switch is not turned on.

Tracking Adjustment

Turn the Mini Belt Sander upside down and hold it firmly with one hand. (Fig.1) Start motor and observe the tracking of sanding belt. If the belt runs outward, turn tracking adjustment knob (5) clockwise, if belt runs inward turn tracking knob (5) counter clockwise.

Adjust the belt until the outer edge of the belt is even with the outer edge of both front and rear pulleys. Make sure the belt does not rub against the rear guide strip.



Once the belt stabilizes you can begin operation. In some cases the belt will require a slight re-adjustment after operating for a period of time.

Note the tracking carefully during the first minutes of operation and readjust if required.

Operation

Prior to turning on the Mini Belt Sander ensure you hold the rubber palm grip (2) firmly and that the sanding belt is not in contact with the work.

Note: Never start the Mini Belt Sander with the sanding belt in contact with the work surface.

Place the heel (10) of the Mini Belt Sander on the work first. With a forward motion, begin the sanding strokes as the machine is lowered onto the work surface, this helps prevent gouging. Keep the Mini Belt Sander moving so that your work will be smooth and even. The stroke is simply a back and forth movement with most of the sanding done on the reverse movement. Use light pressure and allow the sanding belt to do the work.

Note: Too much pressure will slow the work and decrease the sanding efficiency by overloading the motor and reducing the belt speed. Failed motors caused by continuous overloading will not be covered under warranty.

Sand slowly and systematically. When you have completed sanding, lift the sander from the surface before turning it off.

Timber Sanding

Take care to select correct sanding belts for the job. For initial smoothing of rough timber, use

coarse or very coarse grit and sand with the grain. On very uneven surfaces or hardwood, sand across the grain. Be careful to avoid gouging. Then switch to a medium grit belt and sand with the grain. This will provide a relatively level and smooth finish. Now insert a fine grit belt for final finishing. Always sand with the grain to remove scratches left by coarser belts. Keep the Mini Belt Sander moving in long, light strokes during finishing operations. As a final touch, experienced sanders will often insert a “used” fine belt to provide a smooth surface for filling, sealing, brushing or spraying.

Sanding Coated Timber

Your Mini Belt Sander will also help remove old paint, varnish or lacquer. However, if the coating consists of several layers, remove as much as possible with a paint or varnish remover before using the Mini Belt Sander. Use a hand scraper to remove the residue left by the solvent and allow the surface to dry completely before sanding.

Precautions to take when sanding paint

Sanding of lead based paint is NOT RECOMMENDED due to the dangers of lead poisoning. Kits are available to test if the paint is lead based. It is recommended that a dust mask is worn at all times during sanding operations. The fitting of a dust bag will only reduce dust particles.

Environmental safety

- Paint should be removed in such a manner so as to minimize the amount of dust generated.
- Areas where paint removal is occurring should be sealed with plastic sheeting.
- Sanding should be done in a manner to reduce tracking of paint dust outside the work area.

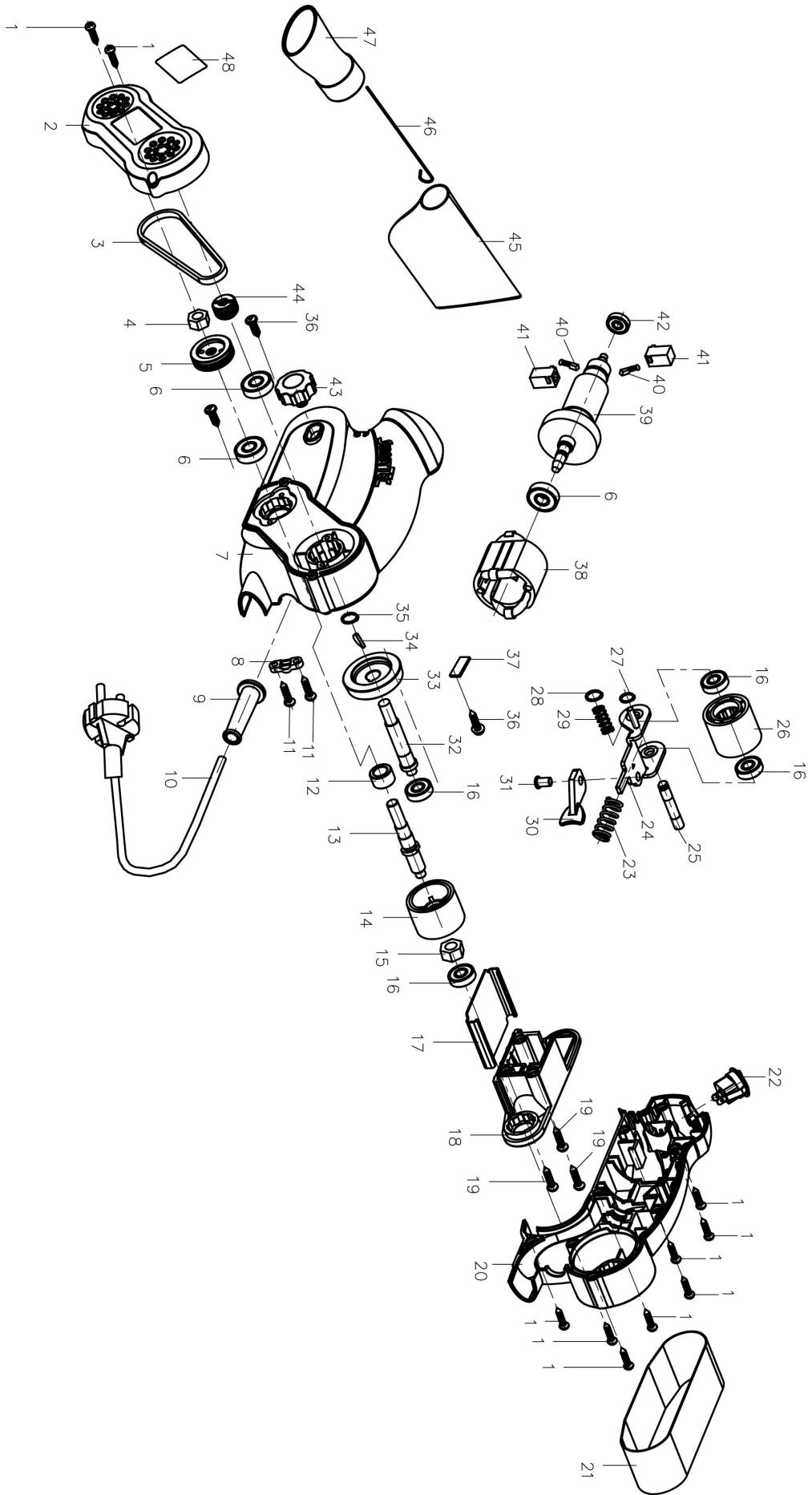
Cleaning and disposal

- All surfaces in the work area should be vacuumed and thoroughly cleaned daily for the duration of the sanding project. Vacuum filter bags should be changed frequently.
- Plastic drop sheets should be gathered up and disposed of along with any dust, wood chips or other removal debris. They should be placed in sealed plastic bags and disposed of through regular garbage pick-up procedures.
- During clean up, children, pets and pregnant women should be kept away from the immediate work area.

MAINTENANCE

- **Maintain your Mini Belt Sander.** It is recommended that the general condition of any Mini Belt Sander be examined before it is used. Keep your Mini Belt Sander in good repair by adopting a program of conscientious repair and maintenance. Have necessary repairs made by qualified service personnel.
- Keep the ventilation slots of the Mini Belt Sander clean at all times and prevent any foreign matter from entering.
- If the housing of the Mini Belt Sander requires cleaning, do not use solvents but a moist soft cloth only. Never let any liquid get inside the tool. Never immerse any part of the tool into a liquid.
- After each use blow air through the Mini Belt Sander to ensure it is free from all dust particles that may build up. Build up of dust particles may cause the tool to overheat and fail.
- When the carbon brushes wear out, the tool will stop. The brushes should be replaced prior to wearing out fully. Brushes will wear out after many uses but before they do, take the tool to a power tool repairer for a quick and low cost replacement.

DIAGRAM & PARTS LIST



Item No	Description
1	Screw ST2.9×14
2	Belt Cover
3	Belt 232×J×3
4	Hex. Nut M8
5	Large Wheel
6	Bearing 608-2Z
7	Left Housing
8	Clamp Power Cable
9	Cable Sheath
10	Power Cable
11	Screw ST3.9×14
12	Copper Bush $\Phi 16 \times \Phi 10 \times 10$
13	Drive Shaft
14	Drive Wheel
15	Hex. Nut M10
16	Bearing 607-2Z
17	Base Board
18	Supporting Frame
19	Screw ST3.9×20
20	Right Housing
21	Sanding Belt 40×303
22	Switch
23	Tension Spring
24	Tension Bracket
25	Axle
26	Tension Wheel
27	Bearing Circlip $\Phi 7$
28	Bearing Circlip $\Phi 8$
29	Adjustable Spring
30	Tension pole
31	Thin Flat Head Socket Shank Rivet 6X10
32	Output Shaft
33	Large Gear
34	Woodruff Key
35	Bearing Circlip $\Phi 10$
36	Screw ST3.9×10
37	Porcelain sheet
38	Stator $\Phi 45 \times 32$
39	Armature
40	Carbon Brushes Pair
41	Brush Holder Assembly Pair
42	Bearing 625-2Z
43	Adjusting Knob
44	Small Belt Wheel
45-47	Dust Bag Assembly (REF. # 45, 46 & 47)
48	Name Plate

For replacement parts and technical questions, please call **1-800-222-5381**.



WARNING

Some dust created by power sanding, sawing, grinding, drilling, and other construction activities contains chemicals known to the State of California to cause cancer, birth defects or other reproductive harm.

Some examples of these chemicals are:

- lead from lead-based paints,
- crystalline silica from bricks and cement and other masonry products, and
- arsenic and chromium from chemically-treated lumber.

Your risk from these exposures varies, depending on how often you do this type of work. To reduce your exposure to these chemicals: work in a well ventilated area, and work with approved safety equipment, such as those dust masks that are specially designed to filter out microscopic particles.

WARRANTY

THIS WARRANTY FORM SHOULD BE RETAINED BY THE CUSTOMER AT ALL TIMES

PURCHASED FROM: _____

DATE PURCHASED: _____

The warranty is only made available by returning the tool to the place of purchase with a confirmed register receipt.

6-MONTH REPLACEMENT WARRANTY

Your IRONTON tool is covered by a 6-month replacement warranty from the date of purchase. Industrial or high-frequency use will void this warranty. The warranty covers faulty parts or workmanship.

WARNING

The following actions will result in the warranty being void.

- If the tool has been operated on a supply voltage other than that specified on the unit.
- If the tool shows signs of damage or defects caused by or resulting from abuse accidents or alterations.
- If the tool has been disassembled or tampered with in any way.

Warranty excludes consumable parts such as brushes, batteries, sanding pads, blades, discs and drill bits.



Distributed by
 Northern Tool + Equipment Co., Inc.
 Burnsville, Minnesota 55306
 NorthernTool.com
 Made in China