

US Distributor Parts & Service Contact Information

Model#: UFO-40H



KUFO INDUSTRIES CORPORATION

TOLL FREE: 1-888-558-4628

Website: www.kufogroup.com Email: kufoseco@kufogroup.com

FEATURES

- The powerfull 1HP TEFC motor features a sealed shaft and bearings for quiet, long lasting operation.
- With a 650 CFM suction power and 1 1HP, 60HZ, 110 Volt motor, this dust collector is capable of handling serious shop messes.
- The wall mount style saves your workshop space.
- Standard equipment includes UFO-40H wall mount dust collector with wall mount bracket and assmeby hardware and 30 micron bag to keep dust particles in place without sacrificing air flow.

Optional 2 micron collection cloth bag (part# DCo40FC2) & Dust control accessories package (part# DCo40APK) are available and ideal to work with this dust collector.

► UFO-40H 1HP Wall Mount Dust Collector

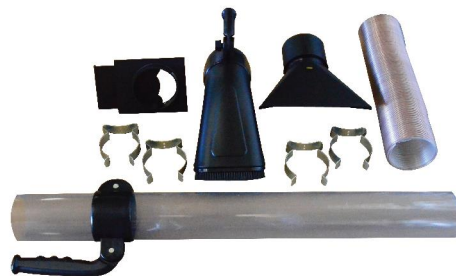
SPECIFICATIONS

MOTOR	UFO-40H	1HP,1Ph 110V. 60HZ with Plug
Air Volume (CFM)		650
Impeller Diameter		12.5"
Bag Capacity		1,5 cuft.
Connection diameter		4" Inlet
Sound Rating @ 3ft.		50 dB(A) @ 3"
Static Pressure		5,85 inch of water
Assembly size		18"x 43" x 17"
Packing size		17" x 15" x 18"
Net Weight		32 lbs
Gross Weight		35 lbs



DC040APK (OPTIONAL) Dust Control Accessories Pack

Includes the three different shapes of Nozzles, Extension wand, 4" Blast gate and wall mount Brackets to organize all accessories. 4" dia.flex.hose at 1.5 ft.compressed length for easy storage and 10 ft. length after fully extended is included in this optional pack.



*****OPTIONAL ACCESSORIES, NOT INCLUDED*****

← Feature in bottom zipper for easy dust disposal without removing the whole bag.

IMPORTANT SAFETY INSTRUCTIONS

When using your Dust Collection System, follow basic safety precautions including the following.

▲ WARNING: To reduce the risk of fire, electric shock, or injury:

- Read and understand this owner's manual and all labels on the Dust Collection System before operating. Use only as described in this manual. To avoid personal injury or damage to Dust Collection System, use only recommended accessories.

Spark inside the electrical parts can ignite flammable vapors or dust. To avoid fire or other possible danger.

- Do not vacuum or use this Dust Collection System near flammable or combustible liquids, gases, gasoline or other fuels like lighter fluid, cleaners, oil-based paints, natural gas, hydrogen, or explosive dusts like coal dust, magnesium dust, grain dust, or gun powder.

- Do not vacuum anything that is burning or smoking such as cigarettes, matches or hot ashes.

- To avoid health hazards from vapors or dusts, do not vacuum toxic materials.

- Do not use or store near hazardous materials.

- Do not use outdoors or on wet surfaces.

- Put unit on a stable, level surface.

- Route vacuum hose and electric cord out of traffic areas.

- Do not allow to be used as a toy. Close attention is necessary when used by or near children.

- Do not leave appliance plugged in. Unplug from outlet when not in use and before servicing.

- To avoid injury from accidental starting, unplug power cord before changing or cleaning filter/dust bag or chip bag.

- Do not use without filter /dust bag and /or chip bag in place.

- Do not unplug by pulling on the cable. To unplug, grasp the plug, not the cable.

- Turn off controls before unplugging.

- Do not use with damaged cable, plug or other parts. If your Dust Collection System is not working as it

should has missing parts, has been dropped, damaged, left outdoors, or dropped into water, return it to Service Center.

- Do not pull or carry by cable, use cable as handle, close a door on cable, or pull cable around sharp edges or corners. Do not run Dust Collection System over the cable. Keep cable away from heated surfaces.

- Do not handle plug of the Dust Collection System with wet hands.

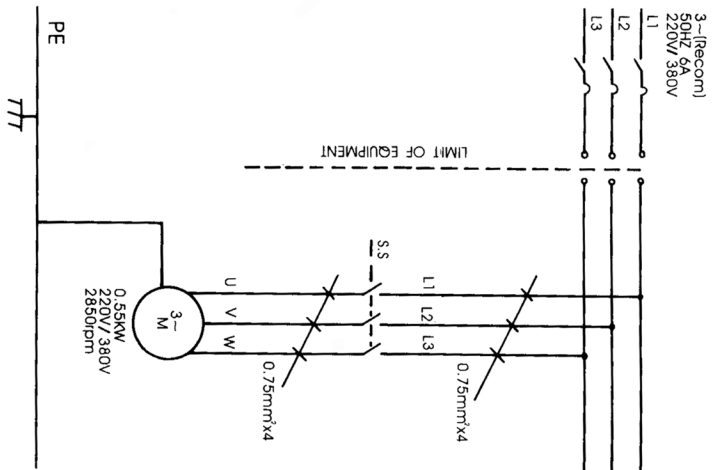
- Do not put any object into ventilation openings. Do not vacuum with any ventilation openings blocked; keep free of dust, lint, hair or anything that may reduce air flow.

- Keep hair, loose clothing, fingers, and all parts of body away from openings and moving parts.

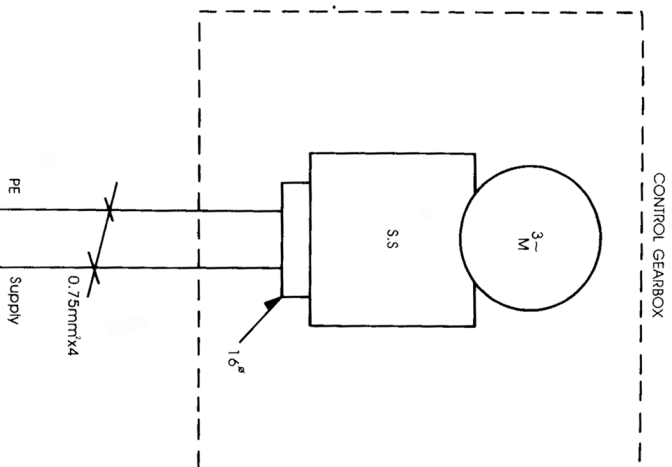
- Extension cable in poor condition or that are too small can pose fire and shock hazards. When using an extension cable, be sure it is in good condition.

- Connect to properly earthed outlet only. (See "Grounding Instructions" section)

CIRCUIT DIAGRAM



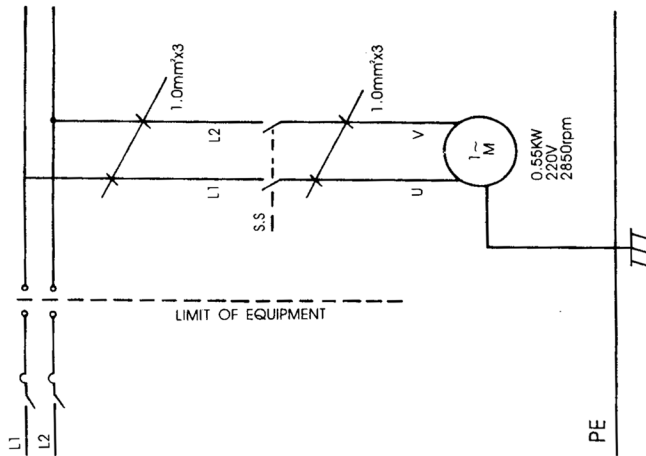
INTERCONNECTION DIAGRAM



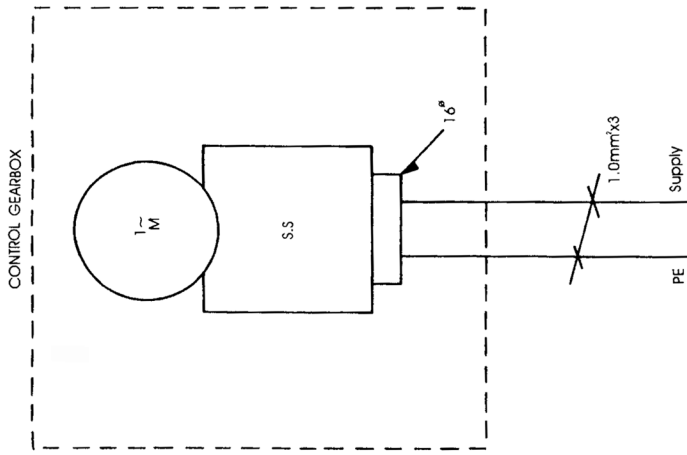
Manufacturer REXMA INT'L INC.		SCHEDULE OF ELECTRICAL EQUIPMENT		Sheet		
Order	See	also	list	Drawn	Checked	
Item Designation	Description and function	Technical data	Qty	Supplier	Supplier's Reference	Compliance with (Standard)
	Selector switch	AC250V 16A 2(a) AC380V 10A	1	Ta Hsing	H05VDF	VDE0630
	Power cable	10A 4x0.75mm ² 90°C	1	Ta Hsing	H05VDF	VDE 0620
	Motor cable	10A 4x0.75mm ² 90°C	1	Ta Hsing	H05VDF	VDE 0620
Motor	Induction motor	3-~.50Hz,220V/380V 2850RPM,IE CLASS,0.55KW IP=54	1	Yeong Bar		IEC 34-1

CIRCUIT DIAGRAM

1~(Recom)
50HZ 10A
220V



INTERCONNECTION DIAGRAM



▲ CAUTION: If using this Dust Collection System to help keep airborne wood dust in heavy usage within acceptable limits, you must regularly monitor air borne dust and maintain Dust Collection System to avoid exceeding dust limits. Each application is unique. Your maintenance schedule must, therefore, be tailored to your specific use of this Dust Collection System.

Safety is a combination of common sense. Staying alert and knowing how your Dust Collection System works.

BEFORE USING THE DUST COLLECTION SYSTEM:

▲ WARNING: TO AVOID MISTAKES THAT COULD RESULT IN SERIOUS, PERMANENT INJURY, DO NOT CONNECT POWER CORD UNTIL THE FOLLOWING STEPS HAVE BEEN SATISFACTORILY COMPLETED:

1. Assembly, mounting and alignment.
2. Learn the function and proper use of the ON/OFF switch.
3. Read and understand all safety instructions and operating procedures throughout the manual.
4. Read all the labels which appear on the top and bottom of filtration housing and sides of motor.

BEFORE EACH USE:

1. Inspect your Dust Collection System. If any parts are missing, bent, or fail in any way, or any electrical components do not work properly, turn off the Dust Collection System, remove switch key, and remove power supply cord from power supply. Replace damaged, missing or failed parts before using the Dust Collection System again.
2. Plan your work to protect your eyes, hands, face, ears and body.

A. WEAR SAFETY GOGGLES, FORESIGHT IS BETTER THAN NO SIGHT. Wear safety goggles, not glasses. Operating any power tool can result in foreign objects being thrown into the eyes which can result in permanent eye damage.

B. When cleaning collection bags, wear a dust mask.

GENERAL SAFETY INSTRUCTIONS

1. KNOW YOUR TOOL

Read carefully and thoroughly and understand owner's operating manual and labels affixed to the tool. Learn its application and limitations as well as its specific potential hazards peculiar to this tool.

2. GROUND THE TOOL

The tool is equipped with a 3 or 4 wire lead, it should always be connected into a 3 or 4 wire power source. Never connect the third (green / yellow or green) wire to a live terminal.

3. KEEP GUARDS IN PLACE

In working order, and in proper adjustment and alignment.

4. REMOVE ADJUSTING KEYS AND WRENCHES

Check to see that keys and adjusting wrenches are removed from tools before turning them on.

5. KEEP WORK AREA CLEAN

Cluttered areas and benches invite accidents. Floor must not be slippery due to wet or sawdust.

6. AVOID DANGEROUS ENVIRONMENT

Do not use power tools in damp or wet locations or expose them to rain. Keep work area well lighted. Provide adequate surrounding work space.

7. KEEP CHILDREN AWAY

All visitors should be kept a safe distance from work area.

8. MAKE WORKSHOP CHILD-PROOF

With padlocks, master switches, or by removing starter keys.

9. USE PROPER SPEED

This tool will do the job better and safer when operated at the proper speed.

10. USE RIGHT TOOL

Do not force tools or attachment to do a job for which it was not designed.

11. WEAR PROPER APPAREL

Do not wear loose clothing, gloves, neckties or jewelry (rings, wristwatches) to get caught in moving parts. Non-slip footwear is recommended. Wear protective hair covering to contain long hair. Roll long sleeves above the elbow.

Manufacturer REXMA INT'L INC.		SCHEDULE OF ELECTRICAL EQUIPMENT		Sheet
Order	See	also	list	Drawn
Item Designation	Description and function	Technical data	Supplier Reference	Checked
	Selector switch	AC125V 16A 2(a) AC250V 10A	JACKSON	Compliance with (Standard) UL E107171 CSA
	Power cable	10A 4x1.0mm² 90°C	Ta Hsing	VDE 0620
	Motor cable	10A 4x1.0mm² 90°C	Ta Hsing	VDE 0620
Motor	Induction motor	1~50Hz, 220V 2850RPM, E CLASS, 0.55KW IP=54	Yeong Bar	IEC 34-1

INTRODUCTION

12. **USE SAFETY GOGGLES(HEAD PROTECTION)**
Wear safety goggles. Everyday eyeglasses only have impact resistant lenses, they are NOT safety glasses. Also, use face or dust mask if cutting operation is dusty, and ear protectors (plugs or muffs) during extended periods or operation.
13. **DO NOT OVERREACH**
Keep proper footing and balance at all times.
14. **MAINTAIN TOOLS WITH CARE**
Keep tools sharp and clean for best and safest performance. Follow instructions for lubricating and changing accessories.
15. **DISCONNECT TOOLS**
Before servicing, when changing accessories or attachments, disconnect from electricly.
16. **AVOID ACCIDENTAL STARTING**
Make sure switch is in "OFF" position before plug in.
17. **USE RECOMMENDED ACCESSORIES**
Consult the owner's manual for recommended accessories. Follow the instructions that accompany the accessories. The use of improper accessories may cause hazards.
18. **NEVER STAND ON TOOL**
Serious injury could occur if the tool tips over. Do not store materials such that it is necessary to stand on the tool to reach them.
19. **CHECK DAMAGED PARTS**
Before further use of the tool, a guard or other part that is damaged should be carefully checked to ensure that it will operate properly and perform its intended function. Check for alignment of moving parts, binding or moving parts, breakage of parts mounting, and any other conditions that may affect its operation. A guard or other part that is damaged should be properly repaired or replaced.
20. **NEVER LEAVE MACHINE RUNNING UNATTENDED**
Turn power "OFF". Do not leave the tool until it comes to a complete stop.

The Dust Collection System is specifically designed to capture sawdust and wood chips at the source. Do not use as vacuum.

CAUTION: The blower housing contains a high speed fan blade that can amputate fingers, grab loose clothing and neckties, or propel dust at high velocities. **DO NOT OPERATE WITHOUT ALL PARTS IN PLACE. DO NOT ATTEMPT TO CLEAN, REMOVE DUST BAGS OR SERVICE UNIT WHILE IN OPERATION.**

This Dust Collection System is intended for either commercial or household use.

IMPORTANT NOTE : PLEASE READ CAREFULLY

Static Shocks Are Common -in dry areas or when the relative humidity of the air is low. To reduce the frequency of static shocks in your home, the best remedy is to add moisture to the air with a console or installed humidifier.



The safety information in this manual is highlighted by the following safety alert symbol. The following signal words are used to indicate the level or risk.

- ▲ DANGER:** means that if the safety information is not followed, someone will be seriously injured or killed.
- ▲ WARNING:** means that if the safety information is not followed, someone could be seriously injured or killed.
- ▲ CAUTION:** means that if the safety information is not followed, someone may be seriously injured.

OPERATION

POWER SUPPLY

Your Dust Collection System is prewired at the factory. The Voltage and Ampere are indicated on the label affixed on the switch or motor cover. Please read all the labels carefully before connect your Dust Collection System to the power source. Please use a Time Delay Fuse or Circuit Breaker of the RIGHT Voltage and Ampere. **FAILURE TO DO THIS WAY CAN RESULT IN INJURY FROM SHOCK OR FIRE.**

Your Dust Collection System must be properly grounded. Not all outlets are properly grounded. If you are not sure that your outlet is properly grounded, have it checked by a qualified electrician.

▲ WARNING: IF NOT PROPERLY GROUNDED, THIS DUST COLLECTION SYSTEM CAN CAUSE ELECTRICAL SHOCK, PARTICULARLY WHEN USED IN DAMP LOCATIONS.

▲ WARNING: TO AVOID SHOCK OR FIRE, IF POWER CORD IS WORN, CUT OR DAMAGED IN ANY WAY, HAVE IT REPLACED BY QUALIFIED ELECTRICIAN IMMEDIATELY.

GROUNDING INSTRUCTION (EARTHING)

This appliance must be grounded. If it should malfunction or breakdown, grounding provides a path of least resistance for electric current to reduce the risk of electric shock. This appliance is equipped with a cord having an equipment grounding conductor and grounding plug. The plug must be plugged into an appropriate outlet that is properly installed and grounded in accordance with all local codes and ordinances.

▲ WARNING: TO MAINTAIN PROPER DUST COLLECTION SYSTEM GROUNDING, WHENEVER THE OUTLET YOU ARE PLANNING TO USE FOR THIS POWER TOOL MUST BE PROPERLY GROUNDED. DO NOT REMOVE OR ALTER THE GROUNDING LINE IN ANY MANNER.

The green colored rigid ear, lug, or the like, extending from the adapter must be connected to a permanent ground such as a properly grounded outlet box cover and it must be held in place by a metal screw.

▲ WARNING: IMPROPER CONNECTION OF THE EQUIPMENT GROUNDING CONDUCTOR CAN RESULT IN A RISK OF ELECTRICAL SHOCK. CHECK WITH A QUALIFIED ELECTRICIAN IF YOU ARE IN DOUBT AS TO WHETHER THE OUTLET IS PROPERLY GROUNDED. DO NOT MODIFY THE ANY ELECTRICAL COMPONENT PROVIDED WITH THE APPLANCE. IF IT WILL NOT FIT THE OUTLET, HAVE A PROPER OUTLET INSTALLED BY A QUALIFIED ELECTRICIAN.

ON/OFF (I/O) SWITCH

On the rear of the MOTOR Housing above the Handle is the Switch Box. The ON/OFF (I/O) Switch has the ability to be turned "ON". Switch to the "ON" position by pushing the "I". Turn the switch "OFF" by pushing the "O". Keep the dust collection system out of the reach of children at anytime.

▲ WARNING: THE DUST COLLECTION SYSTEM CAN START ACCIDENTALLY OR BE USED BY CHILDREN OR OTHERS. ALWAYS KEEP THE DUST COLLECTION SYSTEM OUT OF THE REACH OF CHILDREN.

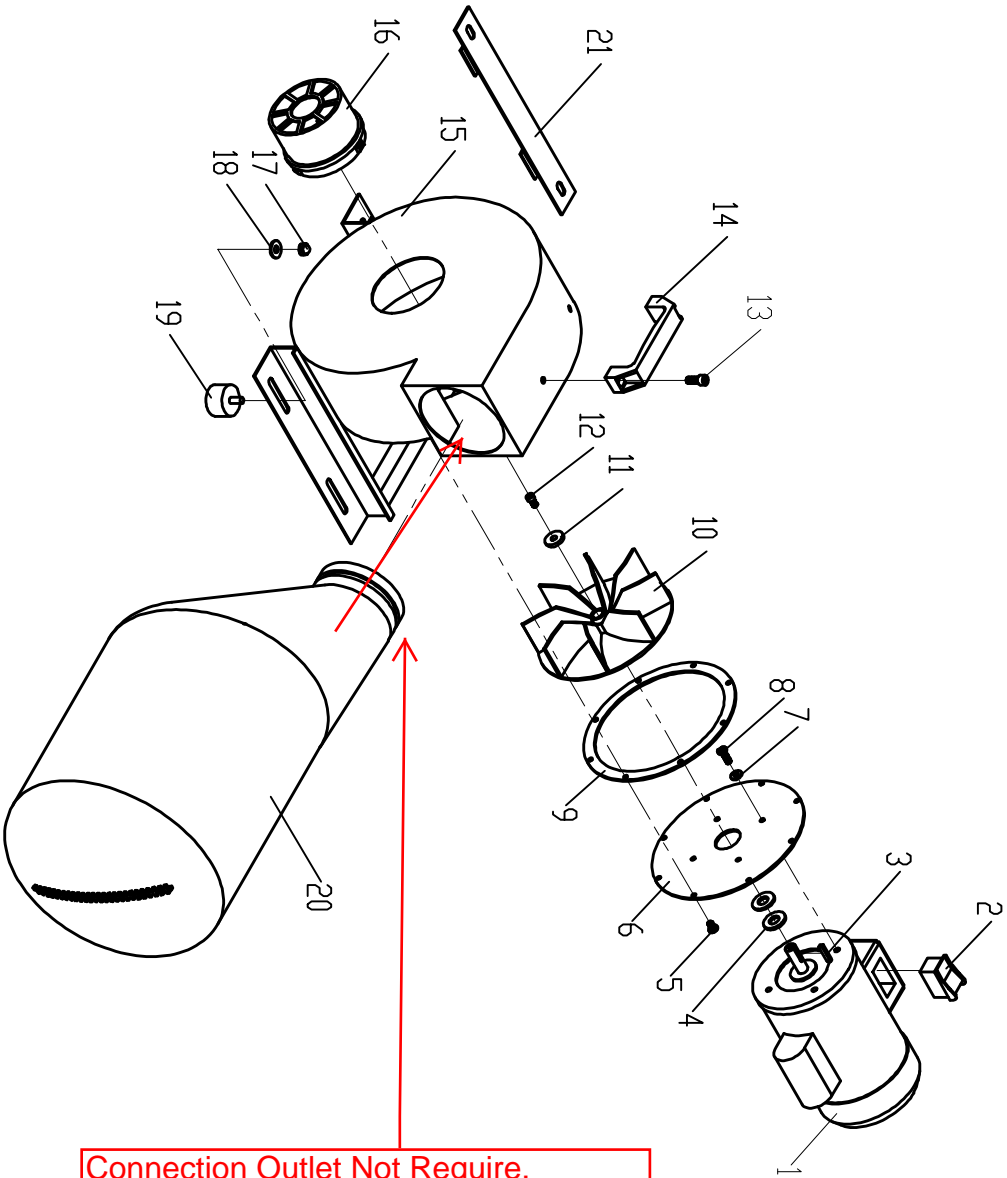
▲ WARNING: THE DUST COLLECTION SYSTEM WILL START IMMEDIATELY WHEN THE POWER COMES BACK ON AFTER BLACKOUT IF THE SWITCH IS LEFT "ON". ALWAYS TURN THE SWITCH "OFF" WHEN BLACKOUT.

WIRE CONNECTION

▲ WARNING: ALL ELECTRICAL WORK OR WIRE CONNECTION WORK SHOULD BE DONE BY A QUALIFIED ELECTRICIAN.

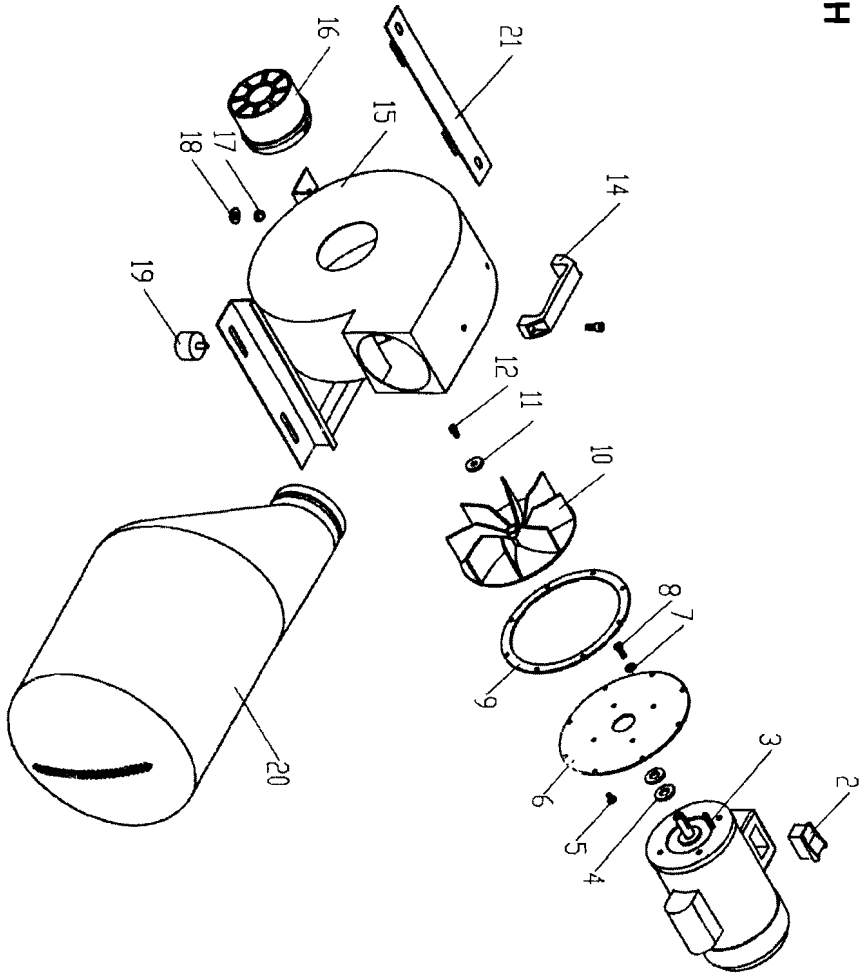
For wire connection refer to the schedules of electrical equipment, circuit diagrams and interconnection diagrams.

UFD-40H



Connection Outlet Not Require.
Features "Snap In" flex ring collection bag

UFO-40H



MODEL UFO-40H PART LIST

No.	Descriptions	Qty
1	Motor	1
2	Switch	1
3	Square key	1
4	Washer	2
5	Bolt	8
6	Motor support plate	1
7	Washer	4
8	Bolt	4
9	Gasket	1
10	Fan	1
11	Washer	1
12	Bolt	1
13	Bolt	2
14	Handle	1
15	Housing	1
16	Inlet	1
17	Nut	4
18	Washer	4
19	Rubber foot	4
20	Bag	8
21	Support frame	1