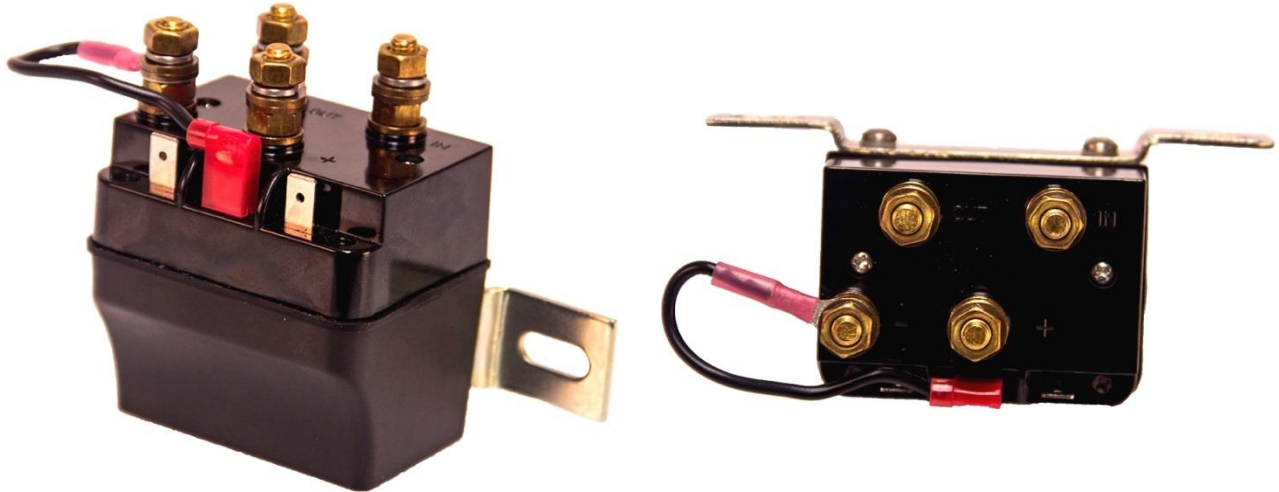


## Product Data Sheet

# 100 Amp DC Reversing Relay

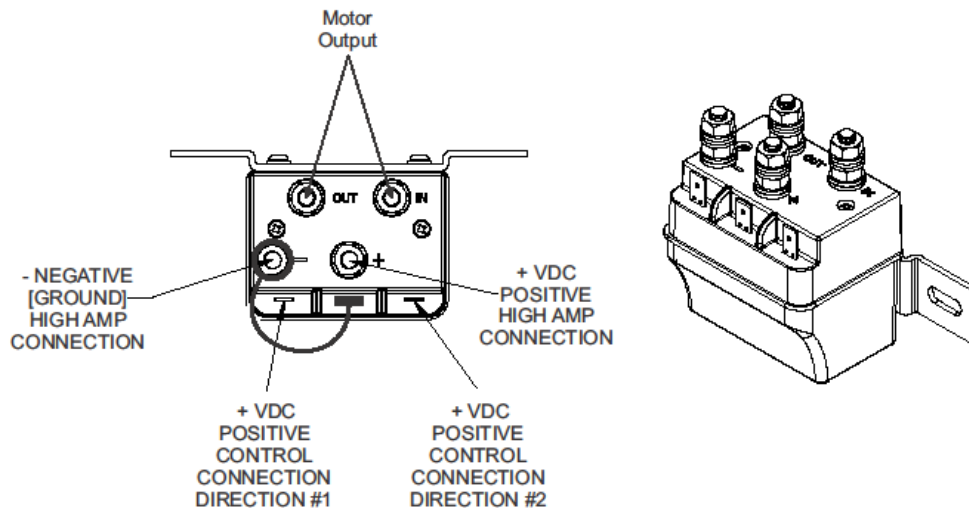


### Standard Features:

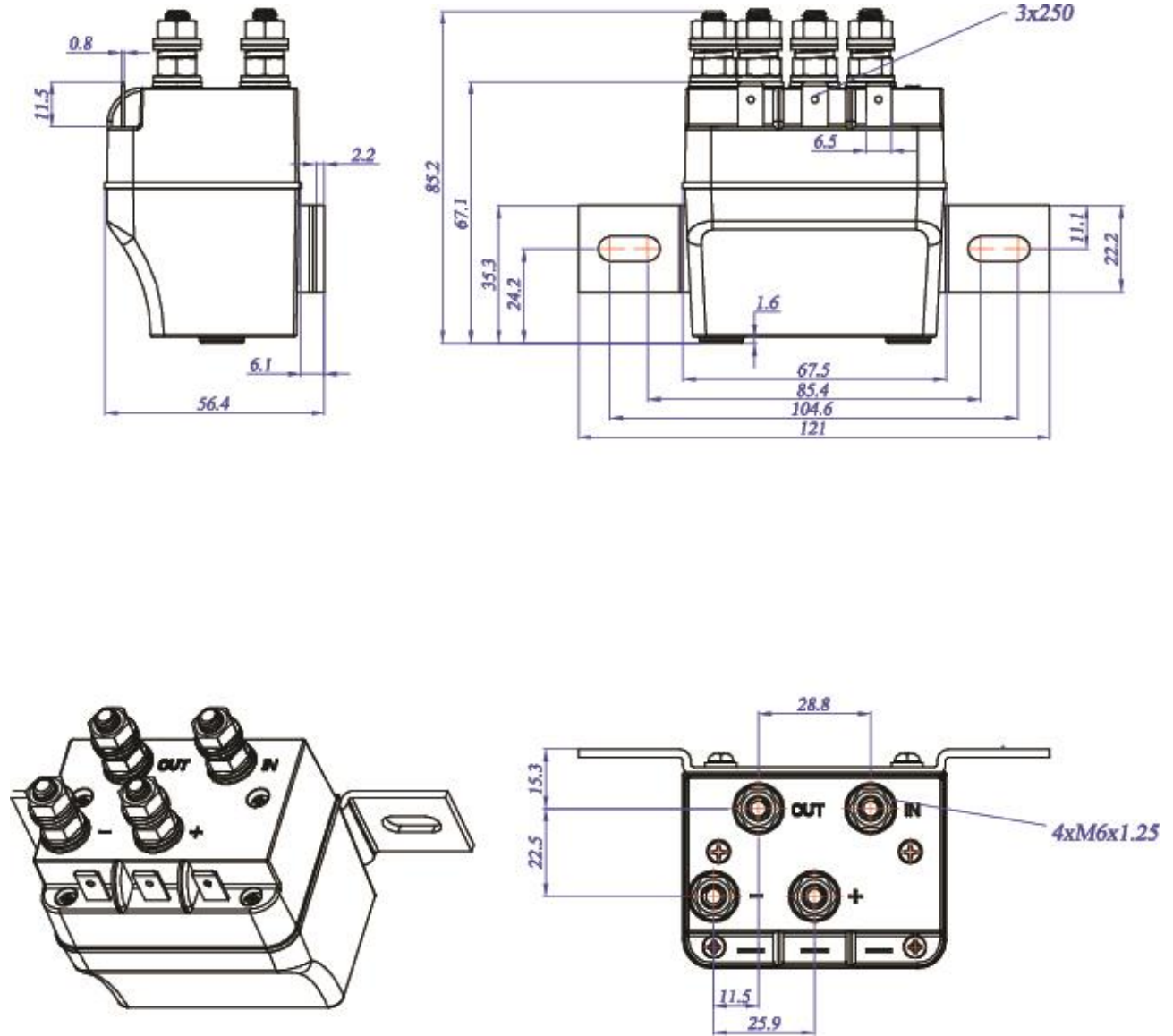
- Dynamic braking
  - Eliminates motor coasting
  - Eliminates arcing issues with rapid reversal
- Self-contained
  - Simplified wiring
- 100 Amp contacts
- IP65 rated

### Specifications:

	Relay-100-12V	Relay-100-24V
Contact Type	Two SPDT	Two SPDT
Maximum Current	100A	100A
Inrush Current	200A	200A
Nominal Switching Voltage	12V	24V
Contact Mechanical Life	10,000	10,000
Cycle Life at Inrush Rating	5,000	5,000
Cycle Life at Maximum Current	1,000	1,000
Maximum Coil Duty Cycle	25%	25%
Maximum On Time	15 Minutes	15 Minutes
Thermal Operation	-40°C to 85°C	-40°C to 85°C
Pull in Voltage	10.3VDC	19.3VDC
Drop out Voltage 100A	6.0VDC	16.0VDC
Rated Coil Voltage	9-14VDC	18-28VDC
Coil Resistance	7.2Ω +/- 0.5Ω	25Ω +/- 0.5Ω
Contact Material Type	AgSnO2InO3	AgSnO2InO3
Maximum Operation Time	50ms	50ms
Release Time	30ms	30ms
Minimum Operating Voltage	9VDC	18VDC
Minimum Operating Current	1.35A	0.68A
IP Rating	IP65	IP65

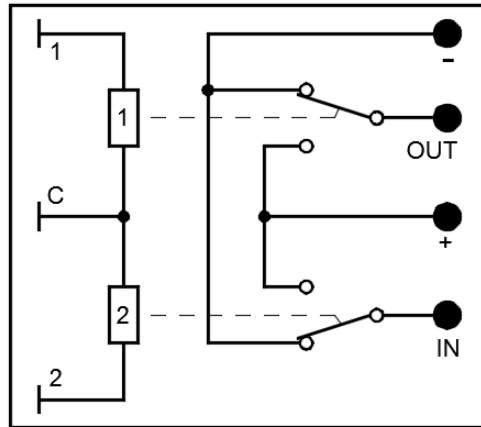


Drawing:



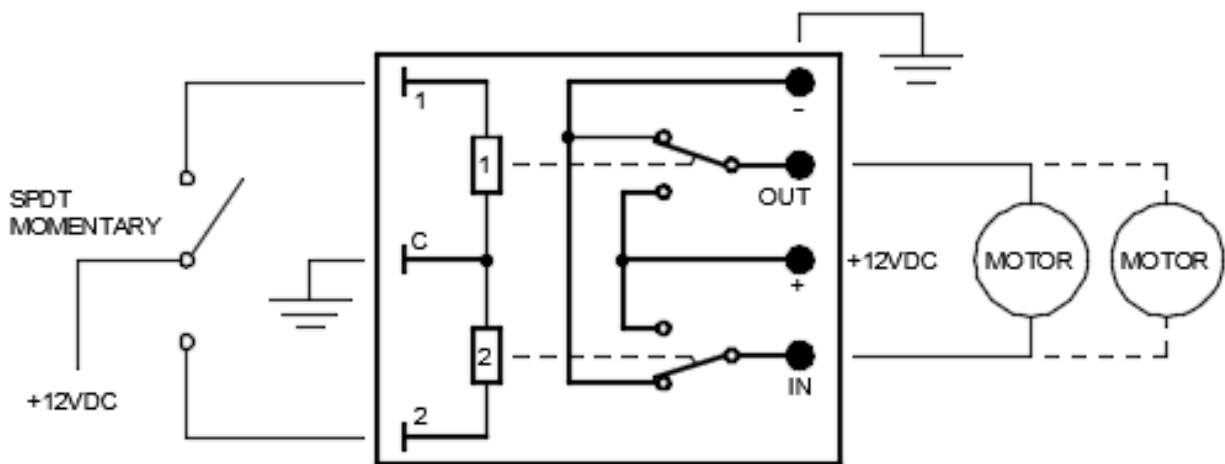
**Wiring:**

100 Amp DC Reversing Relay



**Applications:**

Relay controlling a single actuator motor (or 2 actuator motors at the same time – second motor with dashed line connections)



**Ordering Key**

RELAY – 100 –  V

**Voltage:**  
12 : 12VDC  
24 : 24VDC

<b>Part Number</b>	<b>Description</b>
RELAY-100-12V	100 Amp 12 VDC Reversing Relay
RELAY-100-24V	100 Amp 24 VDC Reversing Relay

**Terms of Use**

The user is responsible for determining the suitability of Concentric International products for specific applications. Due to continuous development in order to improve its products, Concentric International products are subject to change without prior notice. Concentric International reserves the right to discontinue the sale of any products displayed on its website or listed in its catalog or other written materials drawn up by Concentric International.