

# RED DEVIL SNOWBLOWER COMPACT SERIES PARTS MANUAL

26201

6

**OWNERS MANUAL**



Fax 605-543-5610

**WE'RE AS CLOSE  
AS YOUR PHONE**  
Our Service Hotline  
605-543-5606

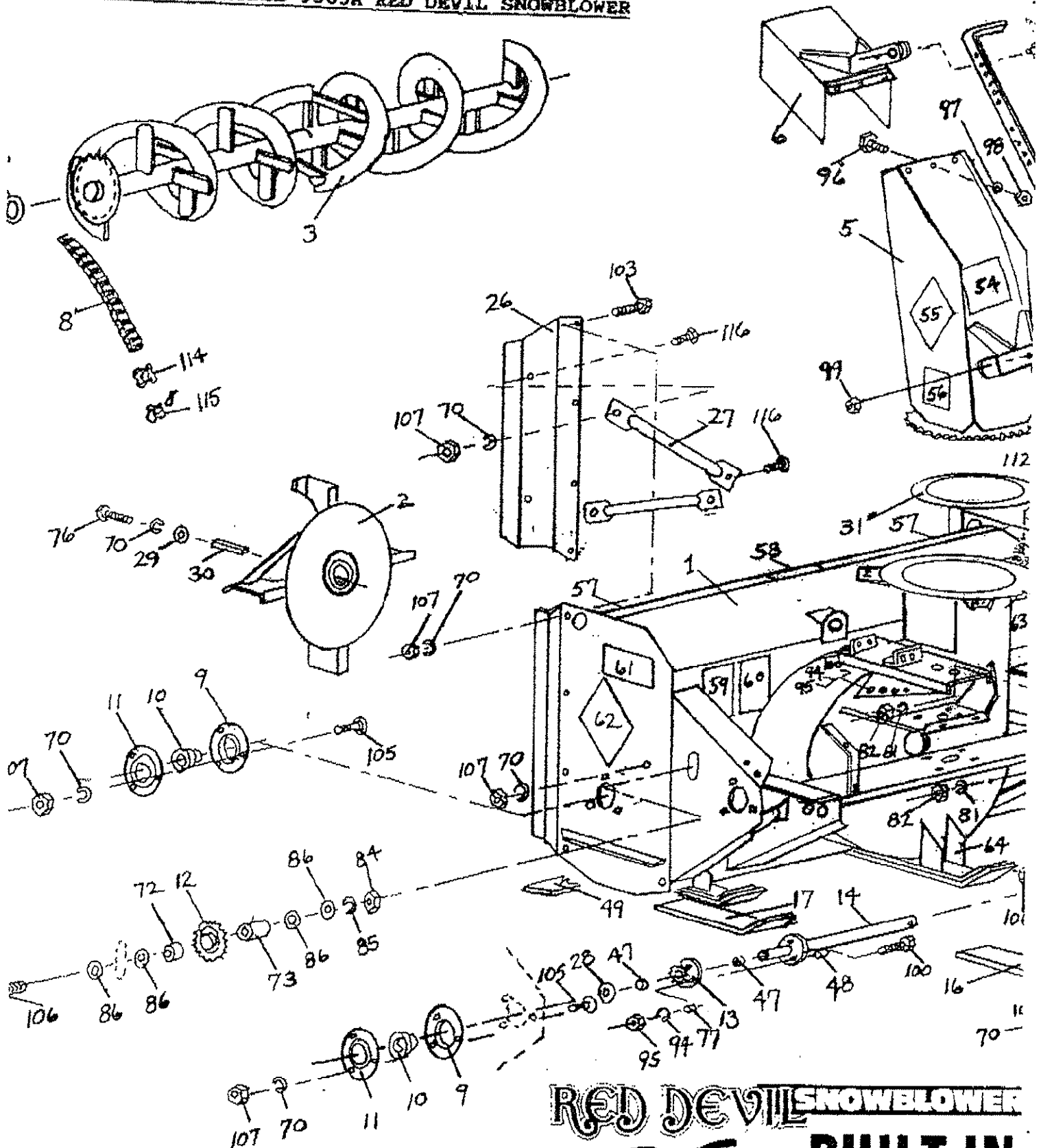
OWNERS MANUAL PACKET NO. 44660A

## RED DEVIL MFG CO


47219 W Schweigers Circle  
Sioux Falls SD 57104

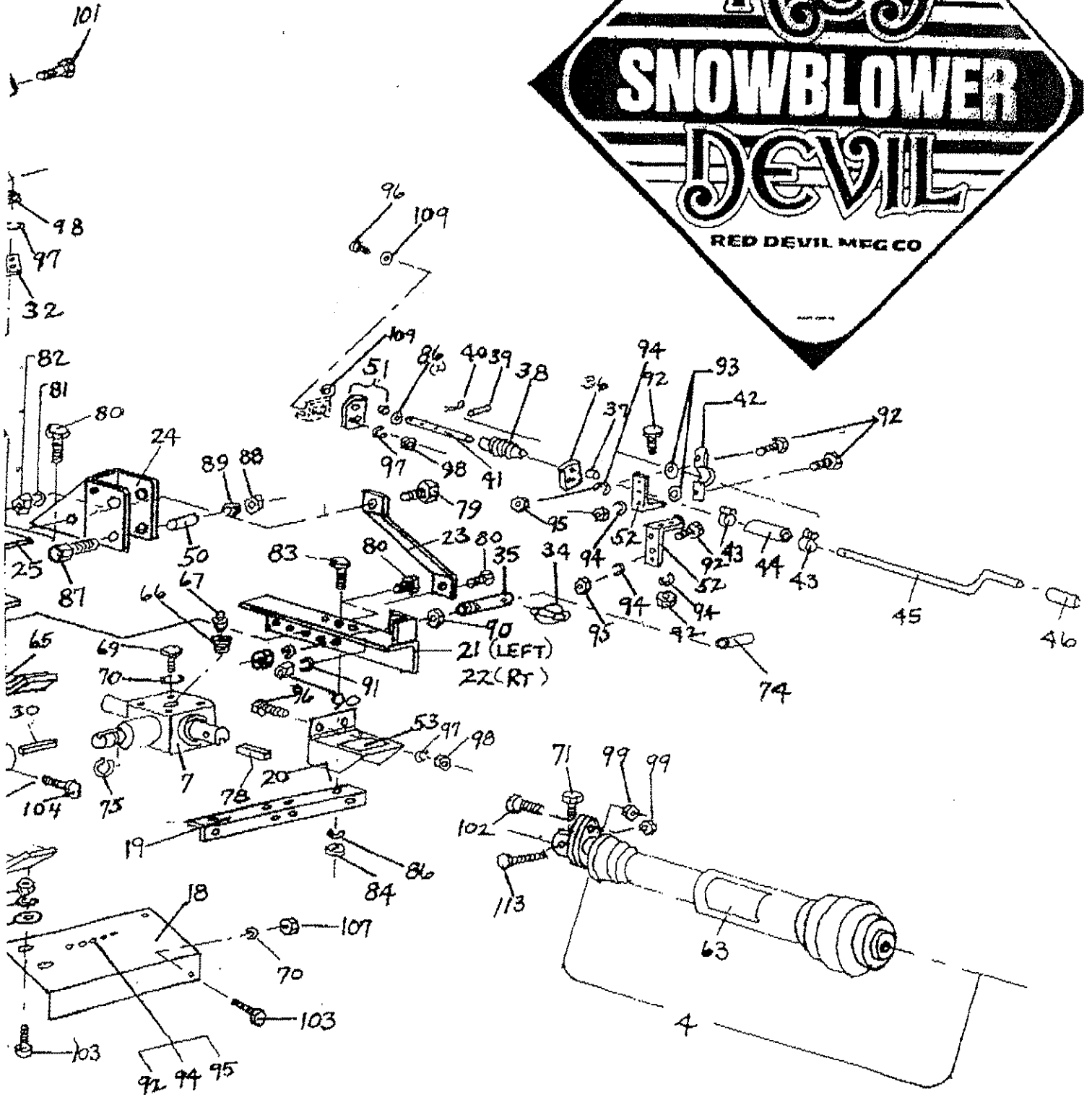
COMPACT 5 FT MODEL 9253A RED DEVIL SNOWBLOWER

COMPACT 6 FT MODEL 9363A RED DEVIL SNOWBLOWER



**RED DEVIL SNOWBLOWER**  
**BUILT IN AMERICA**





**RED DEVIL MFG CO**

ASSEMBLY INSTRUCTIONS FOR RED DEVIL SNOWBLOWERS 9253A & 9263A

B. Assembly of Class 3 Driveline Ass'y C11193A to complete Red Devil Snowblower Housing Assembly.

1. Assemble Driveline assembly (Ref #4) to the front of the Gear Box shaft using one 1/4" X 1 1/2" Square Key. (Ref #78) Insert Key Stock in Gear Box shaft keyway and slide implement end yoke of driveline on Gear Box shaft. Install through hole in Implement yoke and hole in Gear Box shaft, one 5/16 NC-18 X 2 1/2" Hex Head Cap Screw (Ref #113), and one 5/16 NC-18 Locknut. (Ref #99) Tighten securely. Now install one 3/8 NC-16 X 1" Nylock, Hex Head Cap Screw (Ref #71) in Implement Shear Yoke in threaded hole provided, and tighten securely over the 1/4" X 1 1/2" Square Key (Ref #78) installed earlier.

C. Assemble Chute Bundle Combiner C18665A with Chute Weldment and Miscellaneous Chute Parts to Red Devil Snowblower Housing Assembly.

1. Assemble one Nylon Chute Ring (Ref #31) to top of ring on the Housing Weldment (Ref #1), as shown. Set Chute Weldment (Ref #5) in position on top of Nylon Ring on Blower Housing, as shown. Assemble three Formed Clips (Ref 32) with Nylon Hole Plugs (Ref #112) installed in Formed Clips, to the three chute hold down brackets beneath chute ring, using six 5/16 NC-18 X 1" Hex Head Cap Screws, (Ref #96), six 5/16" Lockwashers (Ref #97), and three 5/16 NC-18 Regular Hex Nuts. (Ref #90). Tighten all of the above six 5/16 NC-18 Hex Nuts.

2. Assemble one Deflector Weldment (Ref #6) to top of Chute Weldment (Ref #5), as shown, using three 5/16 NC-18 X 3/4" Hex Head Cap Screws (Ref #96), three 5/16" Lockwashers (Ref #97), and three 5/16 NC-18 Regular Hex Nuts. (Ref #98) Install Deflector Bar (Ref #33), as shown, to Chute Weldment & Deflector Weldment using one 5/16 NC-18 X 1 1/2" Hex Head Cap Screw (Ref #101), along with one 5/16 NC-18 Locknut. (Ref #99). Install top of Deflector Bar (Ref #33) to Deflector Weldment as shown, using one 5/16" Lock Pin. (Ref #68)

3. Install one Handle Grip (Ref #46) to Formed Handle. (Ref #45) Install one Crank Drive Hose (Ref #44) to outer end of Formed Crank (Ref #45) using one Hose Clamp. (Ref #43) Install this Crank Ass'y along with one Hose Clamp (Ref #43) to the short shaft extension of the Cast Worm and Shaft assembly already in place.

4. Install one Formed Angle Bracket (Ref #52) to the small 1/4" hole in the Clevis Weldment (Ref #24), and on the right side, using one 1/4 NC-20 X 1" Hex Head Cap Screw (Ref #92), one 1/4" Lockwasher (Ref #94), and one 1/4 NC-20 Hex Nut. (Ref #95) Now install second Angle Bracket (Ref #52) to the top of the first Angle Bracket using one 1/4 NC-20 X 1" Hex Head Cap Screw (Ref #92), one 1/4" Lockwasher (Ref #94), and one 1/4 NC-20 Hex Nut. (Ref #95) Install Formed Clamp (Ref #42) along with two 1/4" Flatwashers (Ref #93), to the upper Angle Bracket (Ref #52) and around the shaft of the Crank Handle (Ref #45) using two 1/4 NC-20 X 1" Hex Head Cap Screws (Ref #92), two 1/4" Lockwashers (Ref #94), and two 1/4 NC-20 Hex Nuts. (Ref #95) Tighten Hex Nuts. Chute should now be operational.

FORM 340507-01

**RED DEVIL MFG CO**

PRINT IN AMERICA BY AMERICAN WORKERS AND AMERICAN EMPLOYERS

ASSEMBLY INSTRUCTIONS FOR RED DEVIL SNOWBLOWERS MODELS 9253A & 9263A

- A. Assembly of Three Point Mounting Combiner Bundle, Stock Number C18667A to Red Devil Snowblower Housing Assembly.
1. Assemble one Lower 3 Point Weldment, Left (Ref #21), and one Lower 3 Point Weldment, Right (Ref #22) (Not Shown) to Snowblower Housing (Ref #1) using for each side two 5/8 NC-11 X 2" Hex Head Cap Screws (Ref #80), two 5/8" Lockwashers (Ref #81), and two 5/8 NC-11 Hex Nuts (Ref #82). Do not tighten completely as yet.
  2. Assemble one Lower 3 Point Tie Brace (Ref #19) to the under side of the Left & Right 3 Point Lower Weldment (Ref # 21 & 22) using two 1/2 NC-13 X 1 1/2" Hex Head Cap Screws (Ref #83), two 1/2" Lockwashers (Ref #85) and two 1/2 NC-13 Hex Nuts. (Ref #84)
  3. Assemble one Upper 3 Point Clevis Weldment (Ref #24) to the two holes provided, and as shown, in the Housing (Ref #1) using two 5/8 NC-11 X 2" Hex Head Cap Screws (Ref #80), two 5/8" Lockwashers (Ref #81), and two 5/8 NC-11 Hex Nuts. (Ref #82)
  4. Assemble two Formed Zee Bars (Ref #23) to the Left and Right Lower 3 Point Weldments (Ref #21 & 22) using two 5/8 NC-11 X 2" Hex Head Cap Screws (Ref #80), two 5/8" Lockwashers (Ref #81), and two 5/8 NC-11 Hex Nuts. (Ref #82)
  5. Assemble the two Zee Bars (Ref #23) allready installed in step 4, to the Upper 3 Point Clevis Weldment (Ref #24) using two 5/8 NC-11 X 1 1/4" Hex Head Cap Screws (Ref #79), two 5/8" Lockwashers (Ref #81), and two 5/8 NC-11 Hex Nuts. (Ref #82)
  6. Assemble the two 7/8 NF-14 Link Pins (Ref #35), along with four 7/8 NF-14 Jam Nuts (Ref #90), and two 7/8" Lockwashers (Ref #91) to the Left and Right Lower 3 Point Weldments (Ref #21 & 22) in the hole provided on each side. Use one Jam Nut on each side. Tighten securely.
  7. Assemble the two 1 1/8" O.D. Quick Hitch Bushings (Ref #74) to the two 7/8 NF-14 Link Pins (Ref #35) (If Needed) and secure in place using one 7/16" Lynch Pin (Ref #34) for each side.
  8. Assemble to the Upper 3 Point Clevis Weldment (Ref #24) one 3/4 NC-10 X 4" Hex Head Cap Screw (Ref #87), along with one Upper Quick Hitch Bushing (Ref #50) (If Needed), one 3/4" Lockwasher (Ref #89), and one 3/4 NC-10 Hex Nut. (Ref #88)
  9. Only tighten all hardware when you are assured that the proper length of the Three Point Mounting has been determined, after installing the complete Red Devil Snowblower and Driveline ass'y to your tractor.

# RED DEVIL MFG CO

**BUILT IN AMERICA • BY AMERICAN WORKERS • FOR AMERICAN FARMERS**

<u>REF NO:</u>	<u>DESCRIPTION:</u>	<u>MODEL:</u>	<u>PART NO:</u>
1.	6 FT HOUSING WELDMENT,	MODEL 9263A	18661A
2.	IMPELLER WELDMENT, RED		18652A
3.	AUGER WELDMENT, RED, 6 FT MODEL 9263A		18662A
4.	CLASS 3 DRIVELINE ASS'Y		C11193A
4-1.	TRACTOR HALF OF DRIVELINE ASS'Y		11191A
4-2.	IMPLEMENT HALF OF DRIVELINE ASS'Y		11192A
5.	CHUTE WELDMENT		44799
6.	DEFLECTOR WELDMENT		44789
7.	PRECISION GEAR BOX ASS'Y		10027B
8.	#50 ROLLER CHAIN ASS'Y		36412
9.	INNER BEARING HOLDER		34012
10.	BALL BEARING ASS'Y		34010
11.	OUTER BEARING HOLDER		34011
12.	IDLER SPROCKET		31023
13.	SHEAR FLANGE SPROCKET		40336
14.	SHEAR FLANGE SHAFT, MODEL 9263A		40549
15.	COUPLER TUBE		36536
16.	CENTER SKID PAD		44722
17.	OUTER SKID PAD		44782
18.	SHEAR FLANGE SHIELD, MODEL 9263A		44727
19.	LOWER 3 POINT TIE BRACE		44762
20.	DRIVELINE SAFETY SHIELD		44339
21.	LOWER 3 POINT WELDMENT, LEFT		44759
22.	LOWER 3 POINT WELDMENT, RIGHT		44769
23.	ZEE BAR		44765
24.	3 POINT CLEVIS WELDMENT		44779
25.	SPACER PLATE		44777
26.	FORMED WING		44627
27.	WING BRACE		44636
28.	1 1/8" O.D. MACHINE BUSHING, ZC		05379
29.	COVER WASHER		06406
30.	1/4" X 2" SQUARE KEY		31350
31.	NYLON CHUTE RING		34175
32.	FORMED CLIP		44786
33.	DEFLECTOR BAR		36196
34.	7/16" LYNCH PIN		20977
35.	7/8 NF-14 LINK PIN, ZC		21223
36.	SHAFT SUPPORT WITHOUT BEARING		43539
37.	SHAFT BEARING		43517
38.	CAST WORM		41432

FORM 340502-07

<u>REF NO:</u>	<u>DESCRIPTION:</u>	<u>MODEL :</u> 9263A	<u>PART NO:</u>
39.	3/16" X 1" SPRING PIN		XXX
40.	5/32" X 1" COTTER PIN, ZC		XXX
41.	KNURLED SHAFT, ZC		43545
42.	FORMED CLAMP		24912A
43.	HOSE CLAMP		43515A
44.	CRANK DRIVE HOSE		43546A
45.	FORMED CRANK		43537
46.	HANDLE GRIP		23555
47.	SINTERED IRON BEARING		34013
48.	1/2" O.D. STEEL BUSHING		38571
49.	HORIZONTAL CUTTING EDGE, MODEL 9263A		44641
50.	UPPER QUICK HITCH BUSHING, ZC		37182
51.	ROD SUPPORT, WITH BEARING		43540
52.	FORMED ANGLE		43535
53.	"NO STEP" DECAL		000003
54.	DECAL "OPERATOR'S INSTRUCTION"		000011
55.	DECAL, "RED DEVIL"		32708
56.	DECAL, "HANDS OUT"		36403
57.	DECAL, "STAND CLEAR"		39998
58.	DECAL, "MADE IN AMERICA"		32725
59.	DECAL, "CAUTION"		26002
60.	DECAL, "DRIVELINE INSTRUCTIONS"		43605
61.	DECAL, "STAND CLEAR OF AUGER"		000001
62.	DECAL, "SERIES 9263A"		44602
63.	DECAL, "DRIVELINE WARNING"		000002
64.	CENTER SKID SHOE WELDMENT		44648
65.	OUTER SKID SHOE WELDMENT		44658
66.	REDUCER BUSHING		40118
67.	GEAR BOX BRAETHER		20443
68.	5/16" LOCK PIN		30511
69.	3/8 NC-16 X 3/4" HHCS, NYLOCK		43524
70.	3/8" LOCKWASHER, ZC		XXX
71.	3/8 NC-16 X 1" HHCS, NYLOCK		43525
72.	SPACER, (SHORT)		44705
73.	SPACER, (LONG)		44706
74.	QUICK HITCH BUSHING, ZC		06632

RED DEVIL MODEL 9263A SNOWBLOWER PARTS LISTS

FORM 340503-01

<u>REF NO:</u>	<u>DESCRIPTION:</u>	<u>MODEL:9263A</u>	<u>PART NO:</u>
75.	SNAP RING		43518
76.	3/8 NC-16 X 1 1/4" HHCS, NYLOCK		40317
77.	STEEL BUSHING		38572
78.	1/4" X 1 1/2" SQUARE KEY		03284
79.	5/8 NC-11 X 1 1/4" HHCS, GR-5, ZC		xxx
80.	5/8 NC-11 X 2" HHCS, GR-5, ZC		xxx
81.	5/8" LOCKWASHER, ZC		xxx
82.	5/8 NC-11 REGULAR HEX NUT, ZX		xxx
83.	1/2 NC-13 X 1 1/2" HHCS, GR-5, ZC		xxx
84.	1/2 NC-13 REGULAR HEX NUT, ZC		xxx
85.	1/2" LOCKWASHER, ZC		xxx
86.	1/2" FLATWASHER, ZC		xxx
87.	3/4 NC-10 X 4" HHCS, GR-2, ZC		xxx
88.	3/4 NC-10 REGULAR HEX NUT, ZC		xxx
89.	3/4" LOCKWASHER, ZC		xxx
90.	7/8 NF-14 JAM NUT, ZC		xxx
91.	7/8" LOCKWASHER, ZC		xxx
92.	1/4 NC-20 X 1" HHCS, GR-5, ZC		xxx
93.	1/4" FLATWASHER, ZC		xxx
94.	1/4" LOCKWASHER, ZC		xxx
95.	1/4 NC-20 REGULAR HEX NUT, ZC		xxx
96.	5/16 NC-18 X 1" HHCS, GR-5, ZC		xxx
97.	5/16" LOCKWASHER, ZC		xxx
98.	5/16 NC-18 REGULAR HEX NUT, ZC		xxx
99.	5/16 NC-18 LOCKNUT, ZC		xxx
100.	1/4 NC-20 X 1 1/2" HHCS, GR-2, ZC		xxx
101.	5/16 NC-18 X 1 1/2" HHCS, GR-5, ZC		xxx
102.	5/16 NC-18 X 2 1/4" HHCS, GR-5, ZC		xxx

RED DEVIL MODEL 9263A SNOWBLOWER PARTS LIST

FO. 340504-01

<u>REF NO:</u>	<u>DESCRIPTION:</u>	<u>MODEL:9263A</u>	<u>PART NO:</u>
103.	3/8 NC-16 X 1" HHCS, GR-5, ZC		xxx
104.	3/8 NC-16 X 2" HHCS, GR-5, ZC		xxx
105.	3/8 NC-16 X 1" CARRIAGE BOLT, GR-5, ZC		xxx
106.	1/2 NC-13 X 3 1/2" HHCS, GR-5, ZC		xxx
107.	3/8 NC-16 REGULAR HEX NUT, ZC		xxx
108.	3/8 NC-16 LOCKNUT, ZC		xxx
109.	5/16" FLATWASHER, ZC		xxx
110.	3/8" FLATWASHER, ZC		xxx
111.	3/8" LOCKWASHER, ZC		xxx
112.	NYLON HOLE PLUG		41415
113.	5/16 NC-18 X 2 1/2" HHCS, GR-5, ZC		xxx
114.	#50 ROLLER CHAIN CONNECTING LINK		31022
115.	#50 ROLLER CHAIN OFFSET LINK		34022
116.	3/8 NC-16 X 1 1/2" HHCS, GR-5, ZC		xxx

RED DEVIL MODEL 9263A SNOWBLOWER PARTS LIST.

Form 340505-01

# RED DEVIL MFG CO

GEAR BOX ASSEMBLY  
**10027B** COMPONENT STOCK NUMBER

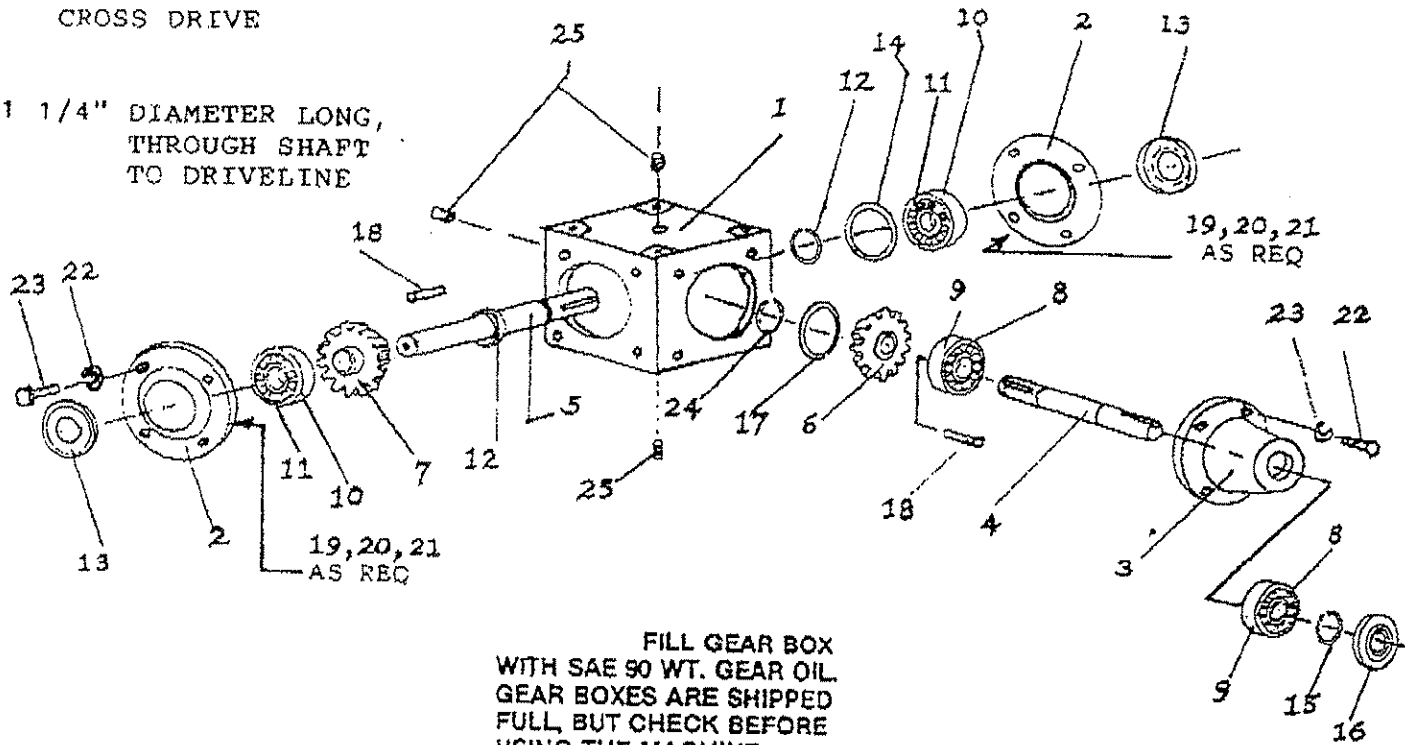
"T" STYLE, 1:1 GEAR RATIO 540 RPM ONLY



10027B PRECISION GEAR BOX ASS'Y

1" DIAMETER SHORT,  
 CROSS SHAFT TO  
 CROSS DRIVE

1 1/4" DIAMETER LONG,  
 THROUGH SHAFT  
 TO DRIVELINE



FILL GEAR BOX  
 WITH SAE 90 WT. GEAR OIL.  
 GEAR BOXES ARE SHIPPED  
 FULL, BUT CHECK BEFORE  
 USING THE MACHINE.

REF:	DESCRIPTION:	PART NO:	REF:	DESCRIPTION:	PART NO:
1.	Housing (10027B)	997920	14.	WASHER 1 1/4 x .125	997933
2.	COVER PLATE	997921	15.	SNAP RING (1" SHAFT)	997934
3.	QUILL, COVER	997922	16.	SHAFT SEAL (1" DIAM)	997935
4.	1" DIA SHORT SHAFT	997923B	17.	WASHER	997936
5.	1 1/4" DIA THRU SHAFT	997924B	18.	Sq. Key 1/4" x 1"	997937
6.	GEAR (1" BORE)	997925	19.	.005" SHIMS	997938
7.	GEAR ( 1 1/4" Bore)	997926	20.	.007" SHIMS	997939
8.	Bearing Cone (1" I.D.)	997927	21.	.010" SHIMS	997940
9.	BEARING CUP (1" I.D.)	997928	22.	5/16"x3/4" HHCS, PF	997941
10.	BEARING CONE (1 1/4")	997929	23.	5/16" LOCK WSHR, PF	997942
11.	BEARING CUP (1 1/4")	997930	24.	SNAP RING, 1 1/4"	997943
12.	SNAP RING, 1 1/4"	997931	25.	1/4 NPT ALLEN SCRW	997944
13.	SHAFT SEAL, 1 1/4"x2"	997932			

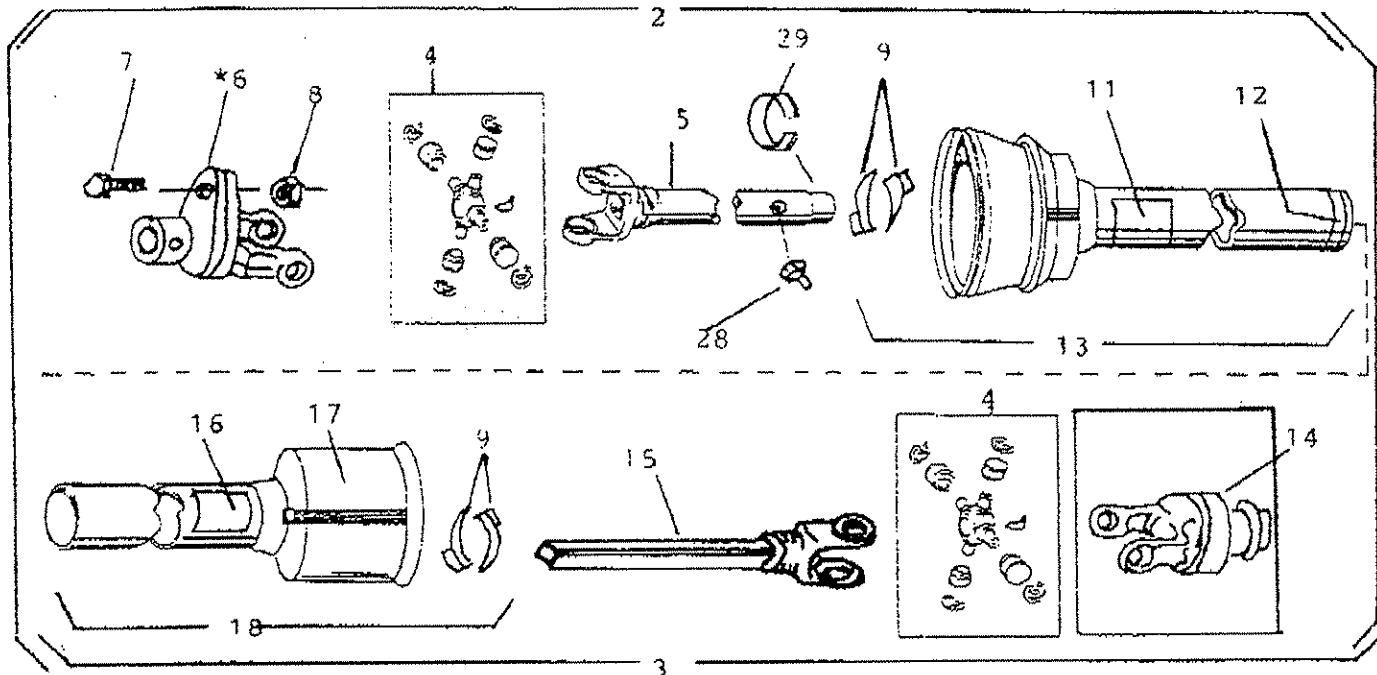
# RED DEVIL MFG CO

BUILT IN AMERICA • BY AMERICAN WORKERS • FOR AMERICAN FARMERS

# FOR SKN-C11193A

## UNIVERSAL JOINT TELESCOPING ASSEMBLY with SHAFT SHEAR and GUARDS

### PARTS SHEET



REF NO:	DESCRIPTION:	PART NO:
1.	UNIVERSAL JOINT ASSEMBLY, COMPLETE, WALTERSCHEID	C11193A
2.	IMPLEMENT HALF ASSEMBLY W/SHEAR YOKE, W/GUARD	11192A
3.	TRACTOR HALF ASSEMBLY W/ 1 3/8-6B SPLINE & GUARD	11191A
4.	CROSS & BEARING KIT, CLASS 3	997541
5.	YOKE & TUBE WELDMENT, IMPLEMENT END	997543
6.	SHEAR BOLT CLUTCH W/ 1 1/4" BORE, IMPLEMENT END	997544
7.	SHEAR BOLT, 5/16 NC-18 X 2 1/4" HHCS, GR-5	997548
8.	SHEAR BOLT LOCKNUT, 5/16 NC-18	997549
9.	SHIELD BEARING	997513
10.	INNER SHIELD ONLY, SHORT, IMPLEMENT HALF	997551
11.	DECAL, DANGER SHIELD MISSING, BLACK, RED, & WHITE	997515
12.	DECAL, DRIVELINE EXTENSION WARNING	000007
13.	SHRT IMPLEMENT END INNER SHIELD W/BEARINGS & DECALS	997546
14.	TRACTOR END YOKE ASS'Y W/ 1 3/8-6B SPLINE, COMPLETE	997517
15.	YOKE & BAR WELDMENT, TRACTOR END	997542
16.	OUTER DRIVELINE DECAL, ENTANGLED MAN	997519
17.	OUTER SHIELD ONLY, TRACTOR END, LONGEST	997550
18.	OUTER SHIELD ASS'Y TRACTOR END, LONG, W/BRNGS & DECAL	997545
*19.	SHEAR YOKE ONLY (PART OF REFERENCE #6)	997552
*20.	SHEAR HUB (PART OF REFERENCE #6)	997553
*21.	BALL (PART OF REFERENCE #6)	
*22.	GREASE ZERK (PART OF REFERENCE #6)	997-525
**23.	SLIP YOKE REPAIR KIT (PART OF REF #14) CONSISTS OF:	
**24.	OBLONG BALL (PART OF REFERENCE # 14)	
**25.	ROUND BALLS (PART OF REFERENCE # 14)	
**26.	COLLAR (PART OF REFERENCE # 14)	
**27.	SNAP RING (PART OF REFERENCE # 14)	
28.	GREASE ZERK (2) , IMPLEMENT HALF TUBE	997533
29.	BEARING RING	997547

Form 340509-01

# SAFETY IS # 1



**BE ALERT!** YOUR SAFETY IS INVOLVED

**RED DEVIL MFG CO**

**BUILT IN AMERICA • BY AMERICAN WORKERS • FOR AMERICAN FARMERS**

340510-01

## PRELIMINARY CHECK

As with any NEW piece of equipment it is a good idea to give the unit a preliminary check before you begin to blow snow. It is also a good idea to take a few moments to pick up and put away objects that may be laying on the ground in the area that you will be removing the snow. Run the RED DEVIL SNOWBLOWER for a short period, then disengage the PTO, shut off the engine, and remove the key. Make a careful inspection for loose bolts, roller chain alignment, binding parts, or any other irregularities. Correct any problems that may have occurred. A simple preliminary check may save you time and money by finding a small problem that might be a major problem in a snowstorm.

## OPERATING THE SNOWBLOWER

### OPERATING YOUR RED DEVIL SNOWBLOWER

Make sure the impeller and augers are free of any loose objects. Check to see if all the shields and guards are in place and in good condition. Lubricate the snowblower before and after each use.

After starting the tractor engine engage the PTO. Ease the tractor clutch out and back slowly into the snow. The sound of the tractor will let you judge when the snowblower is taking in too much snow or has reserve capacity. When backing into deep snowdrifts you may have to take more than one cut, starting at the top of the drift. Remember to disengage the PTO when raising the snowblower. Allow the snow to be cleared from the snowblower by stopping the tractor motion. Shallow snowbanks can NORMALLY be cleared in one pass, depending on the density of the snow and the tractor size.

### **DO NOT BULLDOZE - NOT DESIGNED FOR BULLDOZING DESIGNED FOR 540 RPM ONLY.**

The most effective method of dispensing snow is to blow the snow as high as possible downwind, if room permits. The chute deflector will allow you to adjust the height that the snow is thrown. Reducing the tractor speed will reduce the distance the snow is thrown and the force of the discharge will be less. Your snowblower has a cylinder option for the deflector. When the cylinder is retracted the deflector is wide open.

You can change the direction of the snow being thrown by using chute rotation. Always be aware of where you are throwing the snow. **DO NOT THROW** the snow toward buildings, livestock, the tractor, or any other object that may be damaged.

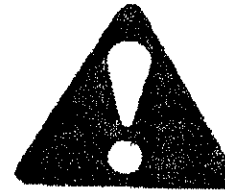
**DO NOT CHANGE** the chute direction or adjust the deflector while snow is being discharged. This may cause damage to both the chute and the deflector.

**DO NOT PULL** on hydraulic lever until checking to see that chute moves freely. Damage to quadrant may occur if chute is frozen.

JEM 340511-01



## SAFETY



Red Devil has designed this snowblower with operator safety as the number one concern. Before you begin to operate this machine, read and study the following safety information. In addition, make sure that every individual who could operate or work with this machine, be it a family member or an employee, is familiar with these safety precautions. The careful operator, with proper instructions, is the best operator.

The **SAFETY ALERT SYMBOL** above means **ATTENTION!** Become **ALERT!** Your **SAFETY** is involved.

The use of the words **CAUTION**, **WARNING**, or **DANGER** on the machine signals three degrees of hazards. **CAUTION** is used for general reminders of good safety practices or direct attention to unsafe practices. **WARNING** is used to denote a **SPECIFIC POTENTIAL HAZARD**. The word **DANGER** is used to denote the **MOST SERIOUS OF HAZARDS!**

### GENERAL SAFETY

Here are some of the general **SAFETY PROCEDURES ABOUT YOUR SNOWBLOWER:**

1. Keep children, pets and spectators away from the machine at all times.
2. Know how to shut off the machine before starting to use the machine.
3. Make sure all the **SAFETY SIGNS** are readable and in good condition.
4. Keep all guards and shields in place and in good working condition to assure maximum safety and top performance.
5. Keep hands, feet and loose clothing away from moving or power-driven parts.
6. Make sure the machine is clear of loose and foreign objects (tools, rocks, wire, branches, etc.).
7. Never attempt to service the machine or driveline while the unit is still engaged and running.
8. **DO NOT** step on or climb over the machine for any reason.
9. Rotating components can catch hands and feet . . . **STAND CLEAR** of these areas.
10. **NEVER** allow anyone to ride on the snowblower.
11. **BEFORE SERVICING OR INSPECTING THE SNOWBLOWER**, disengage the PTO, shut off the tractor engine and remove the key.
12. **FAILURE TO FOLLOW SAFETY INSTRUCTIONS COULD RESULT IN SERIOUS INJURY OR EVEN DEATH TO THE OPERATOR OR SPECTATORS!**

# RED DEVIL MFG CO

47219 W. Schweigers Circle  
Sioux Falls SD 57107  
Ph 605-543-5606 Fax 605-543-5610

**BUILT IN AMERICA • BY AMERICAN WORKERS • FOR AMERICAN FARMERS**

RED DEVIL MODEL 9263A 6 FT SNOWBLOWER INSTRUCTIONS**OPERATION SAFETY**

1. DISENGAGE PTO, stop engine, and remove the key whenever you leave the tractor seat.
2. DISENGAGE PTO, stop engine, and remove the key after striking a foreign object. Thoroughly inspect the snowblower before restarting the unit.
3. DISENGAGE PTO, stop engine, and remove the key before attempting to service your snowblower or unplug the impeller and chute.
4. DO NOT rotate the chute so the discharge material will be directed toward people, your tractor, or any other object that could be damaged.
5. ROTATING COMPONENTS can catch feet, hands, and loose clothing. STAND CLEAR OF ALL MOVING PARTS.
6. DO NOT CLIMB or step on or over the snowblower for any reason.
7. NEVER OPERATE the snowblower in bad light or poor visibility.
8. DISENGAGE the PTO while raising, lowering, and transporting the snowblower.
9. MAKE SURE to read and understand every SAFETY SIGN on your machine.
10. STAY CLEAR of the driveline at all times while PTO is engaged.
11. DO NOT BULLDOZE! Let the machine throw the snow... do not push the snow.
12. KNOW YOUR SURROUNDINGS. Know the area you are removing the snow from.
13. DO NOT allow anyone to ride on the snowblower at any time.
14. KEEP ALL SHIELDS in place. YOUR SAFETY IS INVOLVED.

**PREPARATION****MAKE SURE PTO IS DISENGAGED AND ENGINE SHUT OFF AND KEY REMOVED.**

All bearings have been pre-greased at the factory, but it is a good practice to re-grease them to remove any moisture that may have accumulated. Use your owners manual as a reference for the following simple steps:

1. Shoot grease in all of the grease zerks on your Snowblower.
  - (A) One on each Auger Outer Braeing Holder. (Ref #11)
  - (B) One on the Cross Drive Outer Bearing Holder. (Ref #11)
  - (C) One on the Shear Flange Sprocket. (Ref #13)
  - (D) Four on the Driveline. (Ref #4) One on each Cross and Bearing, one on the Shear Yoke, and one on the inner shaft.
2. Check the Chain Tightness. (Ref #8) Adjust Idler Sproket. (Ref #12)
3. Check the Gear Box. (Ref #7) It has been filled at the Factory with SAE 90 WT Gear Oil, but it is a good practice to check it at first use and again after the first few hours of use.
4. Make sure that the Chute rotating mechanism is working freely.
5. Be sure the Impeller (Ref #2) and Auger (Ref #3) are free of foreign objects. Remove any wire, stones, sticks, Etc..
6. Make sure all Decals and "SAFETY SIGNS" are clean and readable.
7. To assure your "SAFETY", make sure all shields are in place.
8. Make sure Driveline (Ref #4) Shields rotate freely.
9. Make sure all nuts & bolts are securely tightened & pins in place.
10. Make sure Driveline is the proper length, as too long may damage the Precision Gear Box assembly. (Ref #7)

FOY 340513-01

## GEAR BOX SAFETY INSTRUCTIONS AND MAINTENANCE PROCEDURES

1. The gear box is shipped full of oil from the factory. It is always good practice to refill the gear box before operating the snowblower. Fill the gear box to the top of the fill hole with SAE 90 wt. gear oil.
2. At the beginning and end of each season it is a good idea to check the gear box oil for any impurities.
3. Before operating your snowblower, check the key that is held on by the set screw on the driveline. Make sure the set screw is tight and the key is in the proper position.
4. DO NOT attempt to do any service work on the gear box while the snowblower is attached to the tractor.
5. DO NOT STEP on the gear box shield for any reason.
6. KEEP SHIELD IN PLACE! Your snowblower will not operate correctly if the gear box shield is removed.
7. This gear box is designed to operate at 540 RPM ONLY!
8. DO NOT attach a driveline that is too long. Damage to the gear box will occur if the driveline is too long.
9. Make sure driveline is securely fastened onto the gear box's long through shaft.
10. DANGER! Rotating components. Personal injury or even death can result in entanglement in rotating components.

### HOW TO REMOVE THE GEAR BOX

1. Disengage the PTO, shut off engine, and remove the Key. Take the Driveline (Ref #4) off of the PTO Tractor shaft and the Gear Box. Disconnect the Snowblower from the tractor and move Tractor.
2. Loosen the bolt (Ref #106) & Hex Nut (Ref #84) and take the tension off the Chain Idle Sprocket. (Ref #12)
3. Remove the 3/8 NC-16 Nylock Bolt (Ref #76) that attaches the Impeller (Ref #2) to the Gear Box. (Ref #7).
4. Remove from the Gear Box, one Breather (Ref #67) and one Reducer Bushing. (Ref #66) Remove Coupler Tube. (Ref #15)
5. Now remove the eight 3/8 NC-16 X 3/4" Hex Head Cap Screws (Ref #69) and eight 3/8" Lockwashers (Ref #70) that secure Gear Box to Housing.
6. Slide the Gear Box out of the Housing and away from the Impeller tube.
7. Check and repair Gear Box if needed. Refer to Parts sheet 10027B
8. To replace the Gear Box, remove the Square Key (Ref #30) from the impeller tube or Gear Box shaft. Grease the shaft of the Gear Box and insert it between the mounting plates of the Housing. Lift up the Impeller until it lines up with the Gear Box shaft. Now slip the Impeller onto the shaft as you line up the gear box with the eight existing holes in the Housing.
9. Loosely install all eight 3/8 NC-16 X 3/4" Bolts (Ref #69) along with the eight 3/8" Lockwashers (Ref #70) through holes in gear box plates and into Gear Box. "Do Not Tighten." Install the Square Key (Ref #30) through slotted hole in Impeller tube cover. Secure with the Flat Washer (Ref #29) and Lockwasher (Ref #70) and with the 3/8 NC-16 X 1 1/4" Nylock Bolt. (Ref #76) Tighten bolt securely and rotate Impeller to make sure it is not hitting anything.
10. Now tighten all eight gear box bolts. If Driveline "SAFETY SHIELD" (Ref #20) has been removed, then reinstall it now.
11. Slide the Coupler Tube (Ref #15) over the 90 degree shaft of the Gear Box and secure it with the 3/8 NC-16 X 2" Bolt (Ref #104) and 3/8 NC-16 Locknut. (Ref #108)
12. Adjust Idler Sprocket (Ref # 12) and tighten bolt & nut. (Ref #106 & 84)
13. Check oil level in Gear Box. Fill with SAE 90 WT Gear Oil.

# OPERATORS INSTRUCTIONS

1. TURN ENGINE OFF WHEN LEAVING TRACTOR TO WORK ON MACHINE. DO NOT OPERATE IF SHIELDS ARE MISSING.
2. VISUALLY CHECK AREA FOR OBSTACLES AND HAVE CHUTE IN DESIRED POSITION PRIOR TO BLOWING SNOW.
3. ENGAGE PTO WHILE ENGINE IS IDLING. EASE UP TO SPEED. THROTTLE DOWN WHEN RAISING OR LOWERING CREATES LESS WEAR ON DRIVELINE.
4. PROPER TENSION ON IDLER SPROCKET PREVENTS DRIVE SPROCKET WEAR. KEEP DRIVE SPROCKET WELL OILED.
5. GREASE BEARINGS WHILE STILL WARM AFTER EACH USE TO FORCE MOISTURE OUT.
6. CHECK TIGHTNESS OF GEAR BOX BOLTS AFTER EVERY DAY OF USE. BEFORE USE CHECK GEAR BOX OIL LEVEL.
7. DO NOT USE MACHINE AS DOZER BLADE.

A STD 000-011A

These are RED DEVIL SNOWBLOWER PERSONALIZED DECALS that are on your snowblower. Please take a few moments to locate these decals on your machine. They are placed on your snowblower to help you assemble your snowblower and to help you operate the machine easier. These RED DEVIL DECALS will help identify your model if you ever need any parts or service.

**DRIVELINE INSTALLATION INSTRUCTIONS**

UNFORTUNATELY DRIVELINES ARE NOT GUARANTEED BECAUSE FACTORY CANNOT CONTROL MOUNTING. IMPROPER INSTALLATION CAN DESTROY IN 90 SECONDS. FOLLOW INSTRUCTIONS CAREFULLY TO DETERMINE THE PROPER FIT OF DRIVELINE.

1. LIFT UP SNOWBLOWER TO LOWER ARMS OF 3 POINT
2. MEASURE DISTANCE FROM END OF PTO SHAFT TO END OF GEAR BOX SHAFT
3. LAY DRIVELINE ON FLAT SURFACE. MEASURE FROM END OF YOKE TO END OF YOKE IN THE MOST RETRACTED POSITION. IF DISTANCE FROM SHAFT TO SHAFT IS EQUAL TO OR GREATER THAN THE OVERALL LENGTH OF DRIVELINE, THE DRIVELINE SHOULD FIT. IF DRIVELINE LENGTH IS GREATER THAN LENGTH OF SHAFT TO SHAFT, MOVE MOUNTING TO OUTWARD POSITION. SHORTEN DRIVELINE OR USE WITH CAT II QUICK HITCH.
4. IF DISTANCE FROM SHAFT TO SHAFT IS GREATER THAN 9" MORE THAN OVERALL LENGTH OF DRIVELINE, IT MAY BE TOO SHORT. MOST CLASS 1 AND CLASS 5 DRIVELINES HAVE A 4" STROKE WITH MINIMUM OF 5" OVERLAP.
5. ONCE DRIVELINE IS INSTALLED, SLOWLY LIFT SNOWBLOWER THRU COMPLETE ARC OF 3 POINT MTC. MAKE SURE DRIVELINE DOES NOT BOTTOM OUT ANYWHERE THRU APC. MAKE SURE THAT SHIELDS DO NOT SEPARATE.
6. RED DEVIL'S #640 COMES WITH DRIVELINE 31119 @ 30" RETRACTED LENGTH. 4" WORKING STROKE, 6" OVERALL EXTENDED LENGTH.

IF NEEDED CALL FACTORY DIRECT FOR MORE DETAILS. P.N. 43465A

**RED DEVIL SNOWBLOWERS • (712) 252-2601**



This BUILT IN AMERICA DECAL shows that you bought an American Made Product. It is located in the front of the machine right above the augers in the middle of the unit. Part #32725. Size 1-3/4" x 3 1/2"

The DRIVELINE INSTALLATION INSTRUCTIONS DECAL gives the operator guidelines for proper fit for long driveline life. Part #43065 is located on back of chute throat. Size 7" X 7"

**OPERATORS INSTRUCTIONS**

1. TURN ENGINE OFF WHEN LEAVING TRACTOR TO WORK ON MACHINE. DO NOT OPERATE IF SHIELDS ARE MISSING.
2. VISUALLY CHECK AREA FOR OBSTACLES AND HAVE CHUTE IN DESIRED POSITION PRIOR TO BLOWING SNOW.
3. ENGAGE PTO WHILE ENGINE IS IDLING. EASE UP TO SPEED. THROTTLE DOWN WHEN RAISING OR LOWERING. CREATES LESS WEAR ON DRIVELINE.
4. PROPER TENSION ON IDLER SPROCKET PREVENTS DRIVE SPROCKET WEAR. KEEP DRIVE SPROCKET WELL OILED.
5. GREASE BEARINGS WHILE STILL WARM AFTER EACH USE TO FORCE MOISTURE OUT.
6. CHECK TIGHTNESS OF GEAR BOX BOLTS AFTER EVERY DAY OF USE. BEFORE USE CHECK GEAR BOX OIL LEVEL.
7. DO NOT USE MACHINE AS DOZER BLADE.

A STD 00011A



This OPERATORS DECAL will help in the operation of your snowblower. It is black and white and is placed on the back of the chute. Part #000-011. Size 6" X 6"

## DRIVELINE INSTALLATION INSTRUCTIONS

\*UNFORTUNATELY DRIVELINES ARE "NOT" GUARANTEED BECAUSE FACTORY CANNOT CONTROL MOUNTING. IMPROPER INSTALLATION CAN DESTROY IN 90 SECONDS. FOLLOW INSTRUCTIONS CAREFULLY TO DETERMINE THE PROPER FIT OF DRIVELINE.

1. HOOK UP SNOWBLOWER TO LOWER ARMS OF 3 POINT.
2. MEASURE DISTANCE FROM END OF PTO SHAFT TO END OF GEAR BOX SHAFT.
3. LAY DRIVELINE ON FLAT SURFACE, MEASURE FROM END OF YOKE TO END OF YOKE IN THE MOST RETRACTED POSITION. IF DISTANCE FROM SHAFT TO SHAFT IS EQUAL TO OR GREATER THAN THE OVERALL LENGTH OF DRIVELINE, THE DRIVELINE SHOULD FIT. IF DRIVELINE LENGTH IS GREATER THAN LENGTH OF SHAFT TO SHAFT, MOVE MOUNTINGS TO OUTWARD POSITION, SHORTEN DRIVELINE, OR USE WITH CAT II QUICK HITCH.
4. IF DISTANCE FROM SHAFT TO SHAFT IS GREATER THAN 9" MORE THAN OVERALL LENGTH OF DRIVELINE, IT MAY BE TOO SHORT. MOST CLASS 4 AND CLASS 5 DRIVELINES HAVE A 9" STROKE WITH MINIMUM OF 5" OVERLAP.
5. ONCE DRIVELINE IS INSTALLED, SLOWLY LIFT SNOWBLOWER THRU COMPLETE ARC OF 3 POINT MTG. MAKE SURE DRIVELINE DOES NOT BOTTOM OUT ANYWHERE THRU ARC. MAKE SURE THAT SHIELDS DO NOT SEPARATE.
6. RED DEVIL'S 9664D COMES WITH DRIVELINE C11159 @ 39" RETRACTED LENGTH, 9" WORKING STROKE, & 48" OVERALL EXTENDED LENGTH.

IF NEEDED CALL FACTORY DIRECT FOR MORE DETAILS. P.N. 43605A

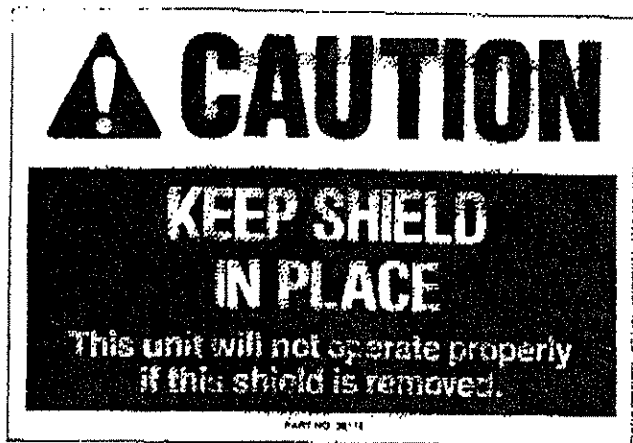
**RED DEVIL SNOWBLOWERS •605-543-5606**

Form 340517-01

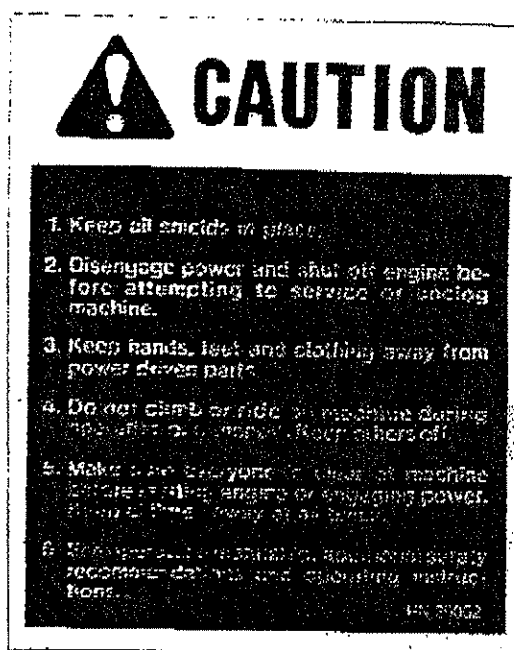
## DRIVELINE SAFETY INSTRUCTIONS AND MAINTENANCE PROCEDURES:

1. Use only attachments and accessories designed for your machine. See your dealer for a complete list of approved attachments and accessories.
2. **KEEP DRIVELINE SHIELD IN PLACE — DO NOT REMOVE.** Never operate your snowblower when driveline shields are damaged or missing. These shields have been installed for your safety. Personal injury or even death can result from entanglement in rotating components.
3. **DO NOT** operate your snowblower with a driveline that is **TOO LONG OR WITH A DENTED SHIELD.** This will not allow the shaft to telescope freely. Operating under these conditions can cause damage to the snowblower, gear box, driveline knuckles, or your tractor.
4. The driveline assembly comes complete with a 3/8" x 2" square key. This key is installed in the keyway on the input shaft of the gearbox. The key is then "locked" into place with a set screw on the driveline. Check this set screw from time to time for tightness to make sure the key is in the right position and firmly held. If for any reason this key is not tight, it can slide out of position causing damage to the driveline.
5. Keep the driveline well greased or oiled. (Oil should be used in severe cold).
6. Make sure the third arm on the tractor three point will have the snowblower sitting level and resting on the skid shoes. This will keep the knuckles on the driveline running as straight as possible.
7. Raising and lowering the snowblower while the PTO is engaged can cause severe damage to the driveline and the tractor.
8. This driveline is designed to operate at **540 RPM ONLY, up to 150 HP tractor.**
9. Operating the driveline at an excessive angle will shorten the lifetime of the driveline and wear out the cross kits faster.
10. **DANGER!!** Rotating driveline. Personal injury or even death can result from entanglement. **STAY CLEAR OF DRIVELINE AT ALL TIMES WHILE PTO IS ENGAGED!**
11. If your driveline is making a "CHATTERING" noise, you may be running at too steep of an angle. You may need to move the mounting to the "OUT" position.
12. If your driveline is too long, there are a couple of options available. One is most Red Devil drivelines can be cut off up to 9" in the field. PLEASE CALL your dealer for instructions regarding cutting off the driveline. The second option is to move the three point mountings on your snowblower out 9". This should take care of the driveline length. Red Devil recommends that the mountings always be "IN".
13. If your driveline is too short make sure the mountings are all the way in the "IN" position. Your driveline must have at least 5" of overlap. Red Devil has longer drivelines available.
14. Drivelines are shipped from the factory fully greased. It is always good practice to regrease them before operating your snowblower.
15. Every couple of years you may want to replace the cross kits in your driveline. This will help you save break-downs in the middle of a snowstorm.

These are the CAUTION DECALS that are on your RED DEVIL SNOWBLOWER. For your safety, please take a few moments and locate these CAUTION DECALS on your machine. They are placed there for your protection and to help protect your machine. CAUTION DECALS are Yellow and Black and are used for general reminders of good safety practices or to direct attention to unsafe practices. The decals below are not actual size.



This CAUTION DECAL denotes that if this shield is removed the gear box will not operate properly. Failure to keep this shield in place will do damage to your snowblower gear box. The part number for this CAUTION DECAL is #36118. The size is 2-1/2" X 6" and the decal is located on the gear box shield



This CAUTION DECAL is a general reminder decal, used to give you general safety information. The part number is #26002 and is located on the back side of the main housing. Size 6" X 6"



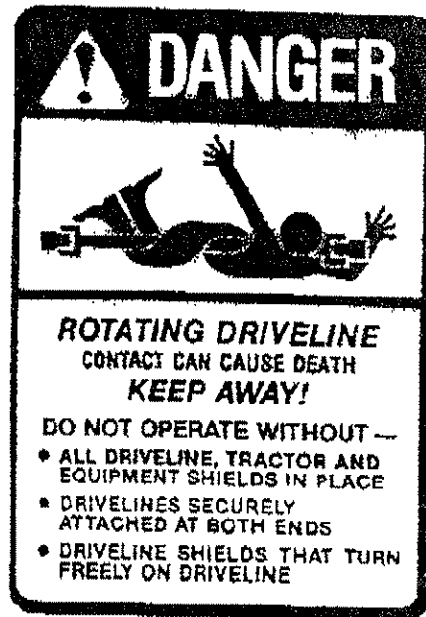
This CAUTION DECAL is to remind the operator and spectators to stand clear of the cross augers. The part number for this decal is #000-001. The size is 4" X 5" and there are two decals located on each side of the main housing.



This WARNING DECAL denotes the specific hazard of injury as a result of attempting to clear the chute of debris while the machine is running. The size is 3" X 4" and is located at the back of the chute. Part #36403.

These are the DANGER DECALS that are on your RED DEVIL SNOWBLOWER. For your safety, please take a few moments and locate these DANGER DECALS on your machine. They are placed there for your protection. DANGER DECALS are Red and White and denote an area on the machine that has the most SERIOUS SAFETY HAZARD for the operator and spectators.

This DANGER DECAL denotes that the rotating driveline can cause serious injury or EVEN DEATH if contact is made. The part number for this decal is #000-002. The size is 3-1/2" X 5" and are located on the driveline shield and backside of the main housing.



This DANGER DECAL denotes that this shield should NEVER be used as a step for any reason whatsoever. The part number for this decal is #000-003. The size is 6" X 2" and is located on the shield over the gear box/driveline attachment area.



This DANGER DECAL denotes that you or any spectators in the area should stand clear of the front of the snowblower. the rotating cross augers can cause serious injury or EVEN DEATH if contact is made. The part number on this decal is #39998. The size is 1-1/2" X 8" and they are located on each end of the front of the machine, on the top edge of the main housing.



**Red Devil Mfg.**

605-543-5606

This RED DEVIL SNOWBLOWER EMBLEM DECAL shows that this is a product of Red Devil Mfg Co. The part number for this decal is #32708. The size is 6" X 6" and they are located on both sides of the chute. They are RED and WHITE.



This 6" X 6" BLACK & WHITE Red Devil Snowblower model decal shows the model number of your snowblower. Decal #44601A is for Model 9253A Five Foot Red Devil Snowblower. Decal #44602A is for Model 9263A Six Foot Red Devil Snowblower. They are located on both sides of the main Red Devil housing. Always refer to your model number when ordering parts.

Form 340521-01

# LIMITED WARRANTY



Red Devil Mfg. Co. warrants products of its manufacture to be free from defects in material and workmanship under normal use and service for a period of ninety (90) days from the date of first use by the original owner-user.

Red Devil Mfg. Co.'s obligation under this warranty is limited to the replacement free of charge of any part that its inspection shows to be defective upon the return of such product. round trip transportation charges paid by owner, at Red Devil Mfg. Co. factory in Sioux City, Iowa. All other costs, expenses and damages including but not limited to transportation charges, removal, packing, installation, all consequential damages and all special damages are specifically excluded from this warranty.

This warranty shall not apply to any products which have been repaired or altered nor shall the warranty apply to any products which have been installed or operated contrary to Red Devil Mfg. Co. instructions or which have been subject to misuse, negligent operation or maintenance or to accident.

Products of Red Devil Mfg. Co. are not warranted expressly or by implication for merchantability and fitness of for any measure of service or suitability for a specific purpose notwithstanding any disclosure to Red Devil Mfg. Co. of the use to which to product is to be put. There are no warranties which extend beyond the warranty expressly set forth herein.

The sale of Red Devil Mfg. Co. products under any other warranty of guarantee express or implied is not authorized.

## BUILT IN AMERICA • BY AMERICAN WORKERS • FOR AMERICAN FARMERS

**\*SPECIAL NOTE: RED DEVIL MFG. CO. CANNOT GUARANTEE DRIVELINES.** There is absolutely no warranty on drivelines because they can be destroyed in only 90 seconds of misuse. Since Red Devil Mfg. Co. cannot limit or know the exact tractor height or distance and therefore we cannot know how any given driveline will fit all we can do is give you Good Guidelines for Long Driveline Life.

# TOP VALUE

*From A Performance Leader*

**RED DEVIL MFG CO**

47219 W Schweigers Circle



# THANK YOU! RED DEVIL OWNER!



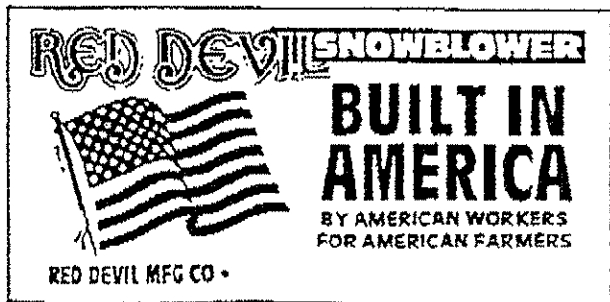
Red Devil has one specific aim to design and manufacture products that will give you years of trouble free and dependable service . . . at the best possible price. Owners are very special to Red Devil. We want each and every Red Devil owner to be completely satisfied or receive their money back on every Red Devil product. Red Devil's concern for its owners extends not only through any legal warranty period, but also for the entire life of the product. The most important principle of our company is for every single owner to be 100% satisfied.

You as a Red Devil owner will normally go to your Red Devil dealer for parts and service. We cannot sell complete models to owners directly because your Red Devil dealer is so important for parts and service. However, we will be happy to serve you directly from the factory with service information and repair parts if you cannot locate a Red Devil dealer in your immediate area.

Throughout the entire life of your Red Devil product, if you misplace your Operator Manual or need to replace any safety decals . . . feel free to give us a call. Remember, we are as close as your phone. We will be happy to answer any questions on product operation or maintenance.

Thank you for allowing us to serve you!

Form-340500-01



**WE'RE AS CLOSE  
AS YOUR PHONE**  
Our Service Hotline

800-624-0138

**BUILT IN AMERICA - BY AMERICAN WORKERS - FOR AMERICAN FARMERS**