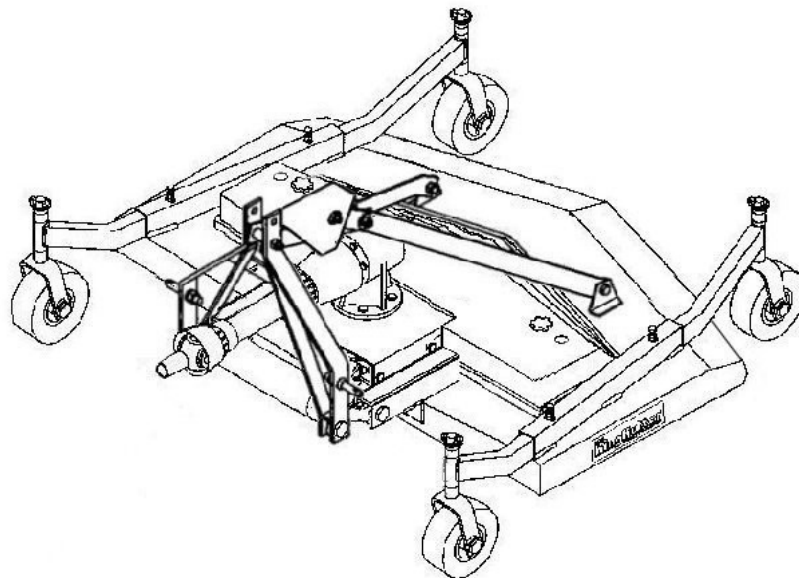


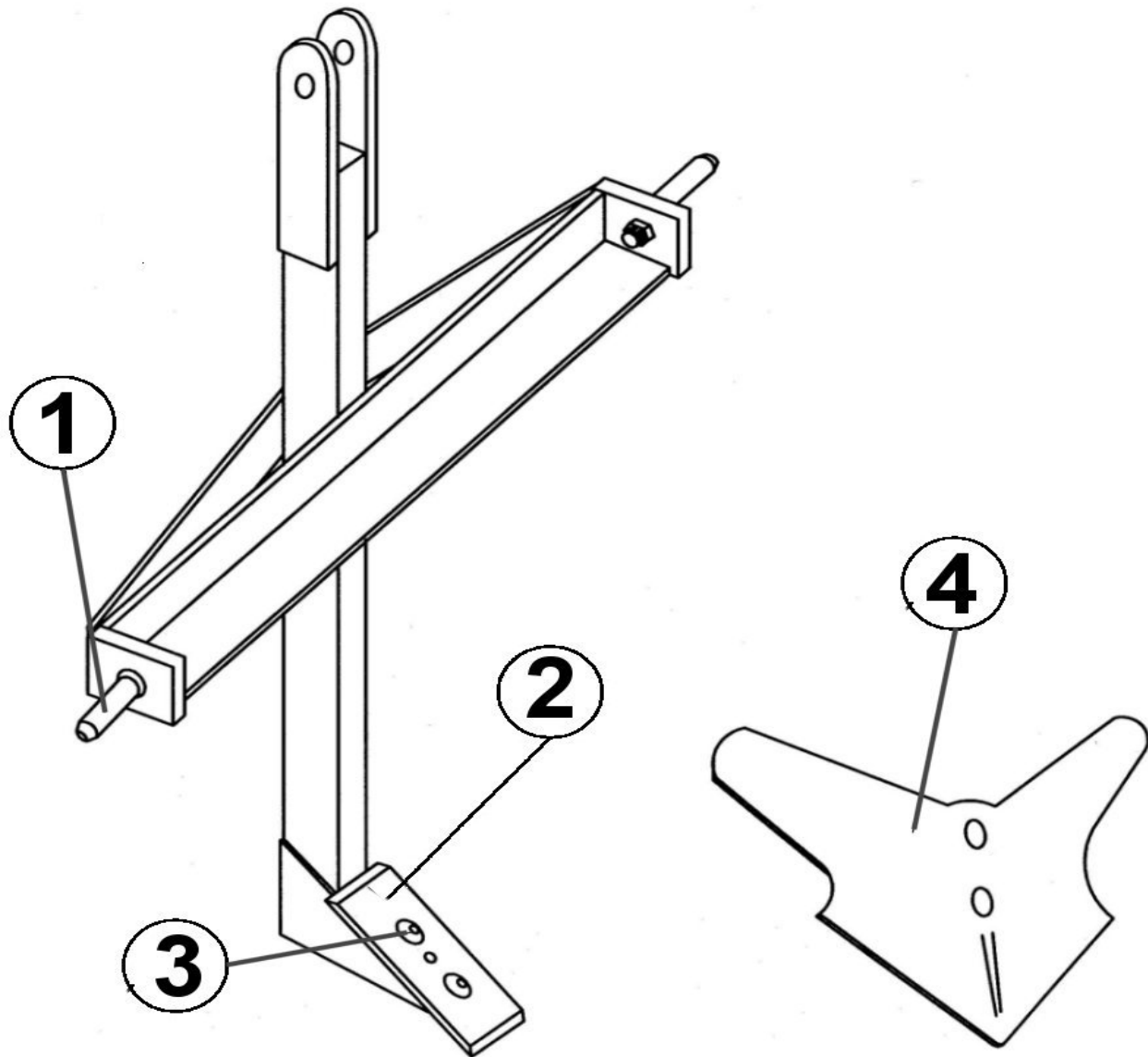
# ***XB & XBX*** **PARTS MANUAL**



# CONTENTS

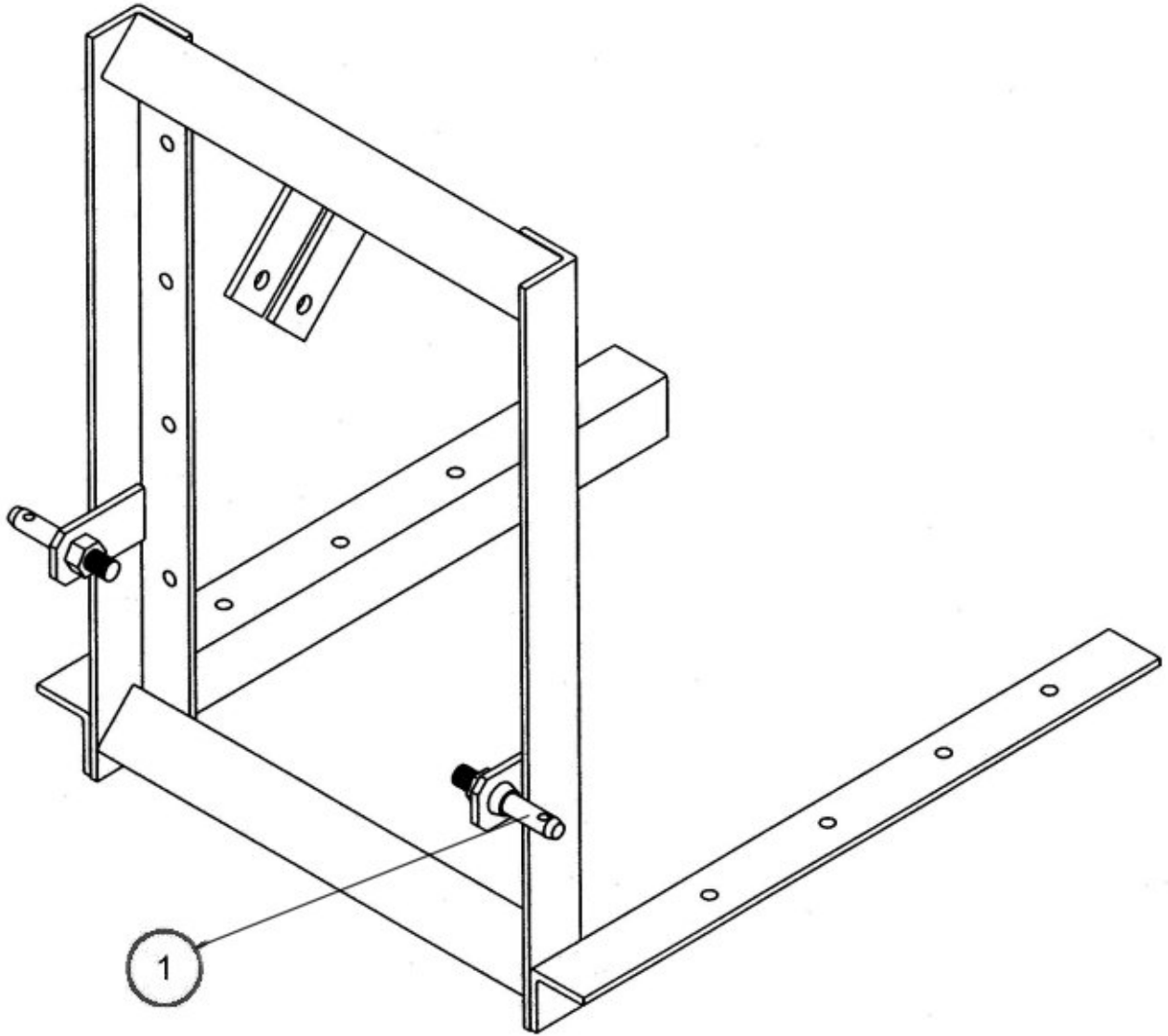
	Page
Middle Buster/ Sub Soiler-----	3
Carry All -----	4
Dirt Scoop -----	5
Yard Rake-----	6
Rear Blade -----	7
Box Blade-----	8
New Box Blade EZ Shank -----	9
XBX Box Blade EZ Shank -----	9
Angle Frame Disc-----	11
XB & XBX Kutter -----	12
Finishing Mower-----	14
40hp Gearbox -----	16
PTO Shaft-----	18
Blade Spindle Unit-----	19
Tiller XB & XBX-----	20
Tiller Side Gearbox -----	22
Tiller Top Gearbox -----	24
Tiller Hub Parts -----	26
Dump Trailer -----	28
Dump Trailer Tire & Wheel -----	30
Seeder-----	31

# XB MIDDLE BUSTER/SUB-SOILER



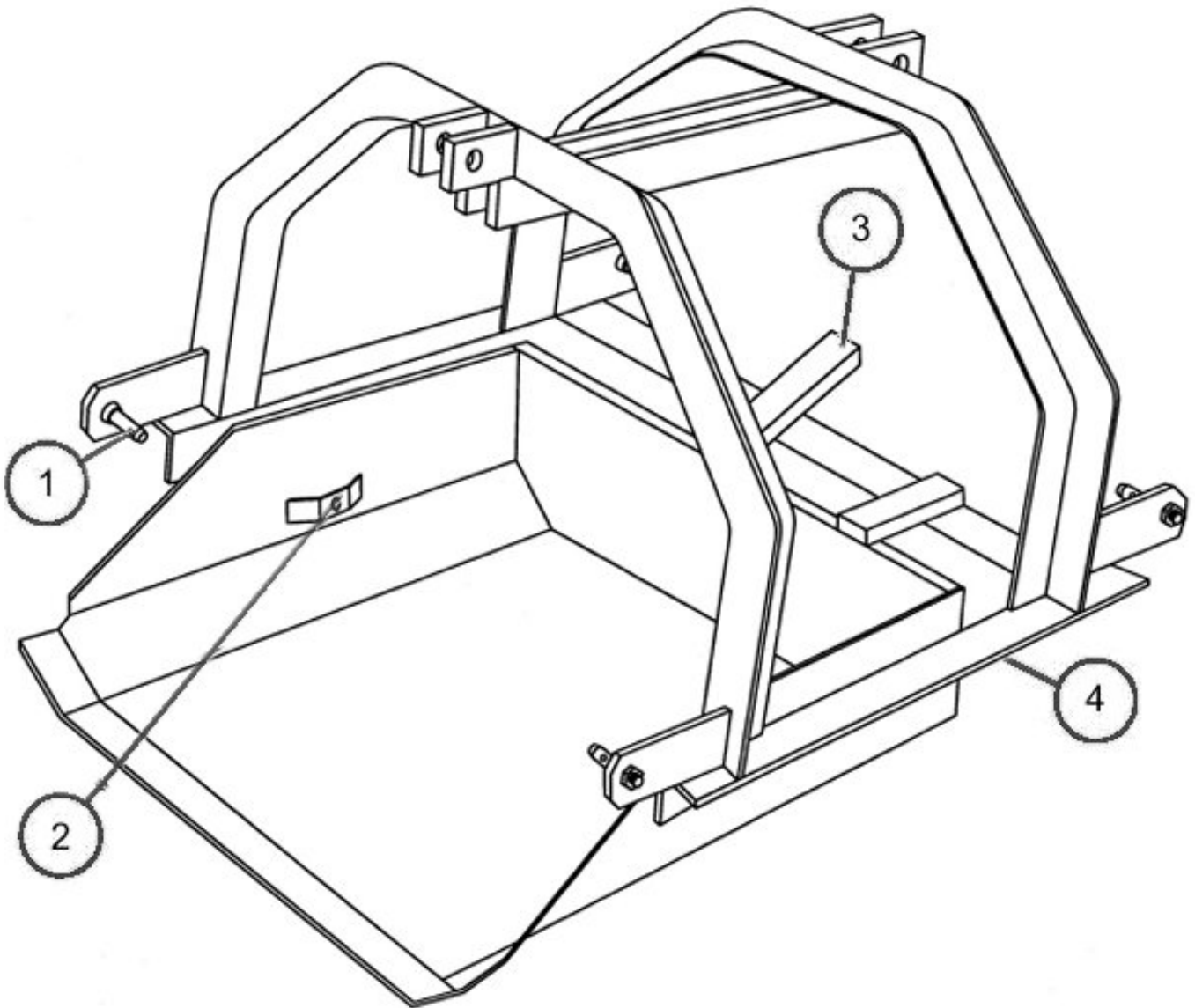
Ref. No.	Part Name	Part Number
1	(CAT. 1) Lift Pins (Pkg. 2)	500001
2	Sub Soiler Point	177008
3	7/16" x 3-1/4" Plow Bolt Set (Pkg. 2)	503007
4	Furrower 12"	177007

# XB CARRY ALL



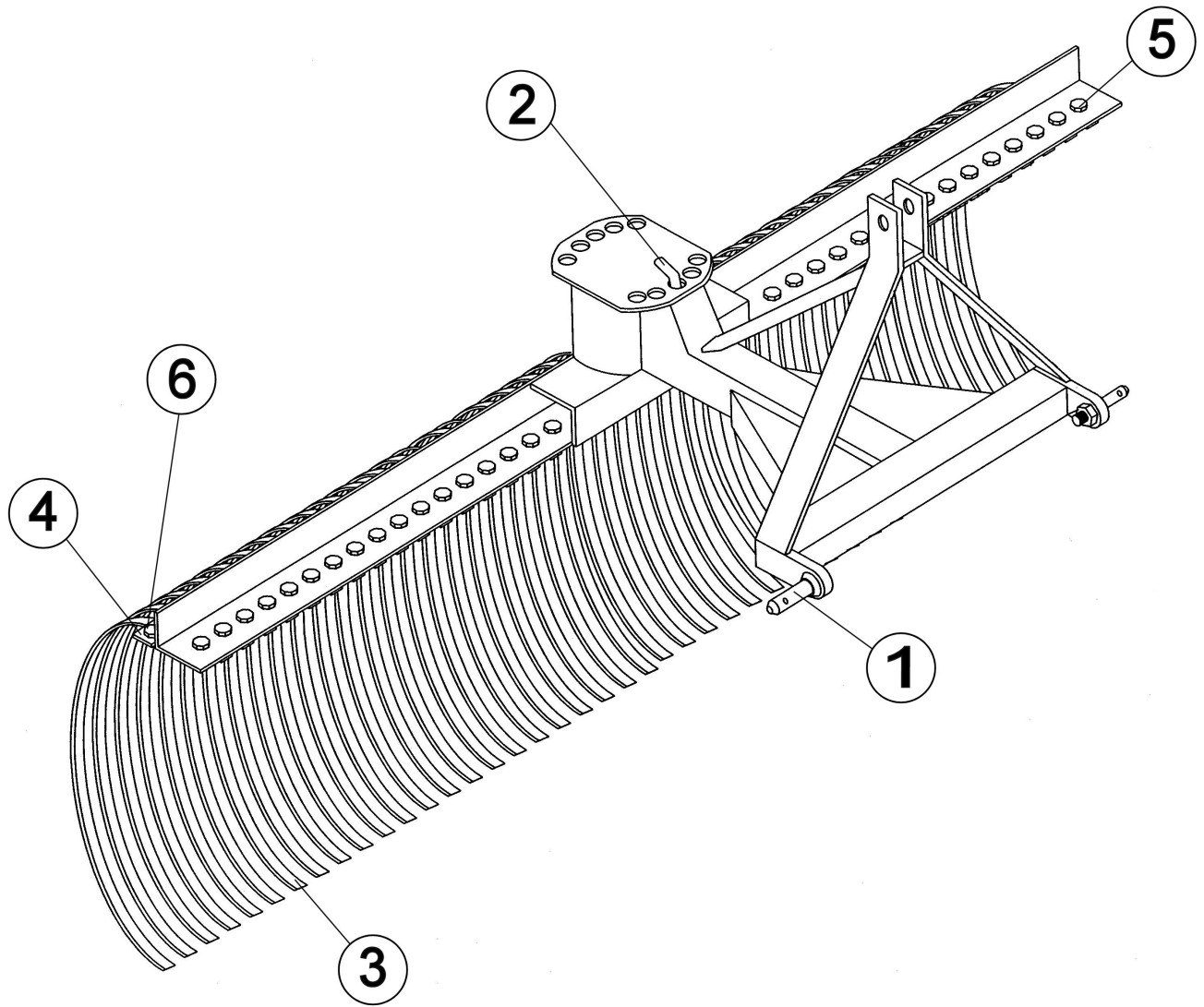
Ref. No.	Part Name	Part Number
1	CAT. 1 Lift Pin (2/PK)	500001

# XB DIRT SCOOP



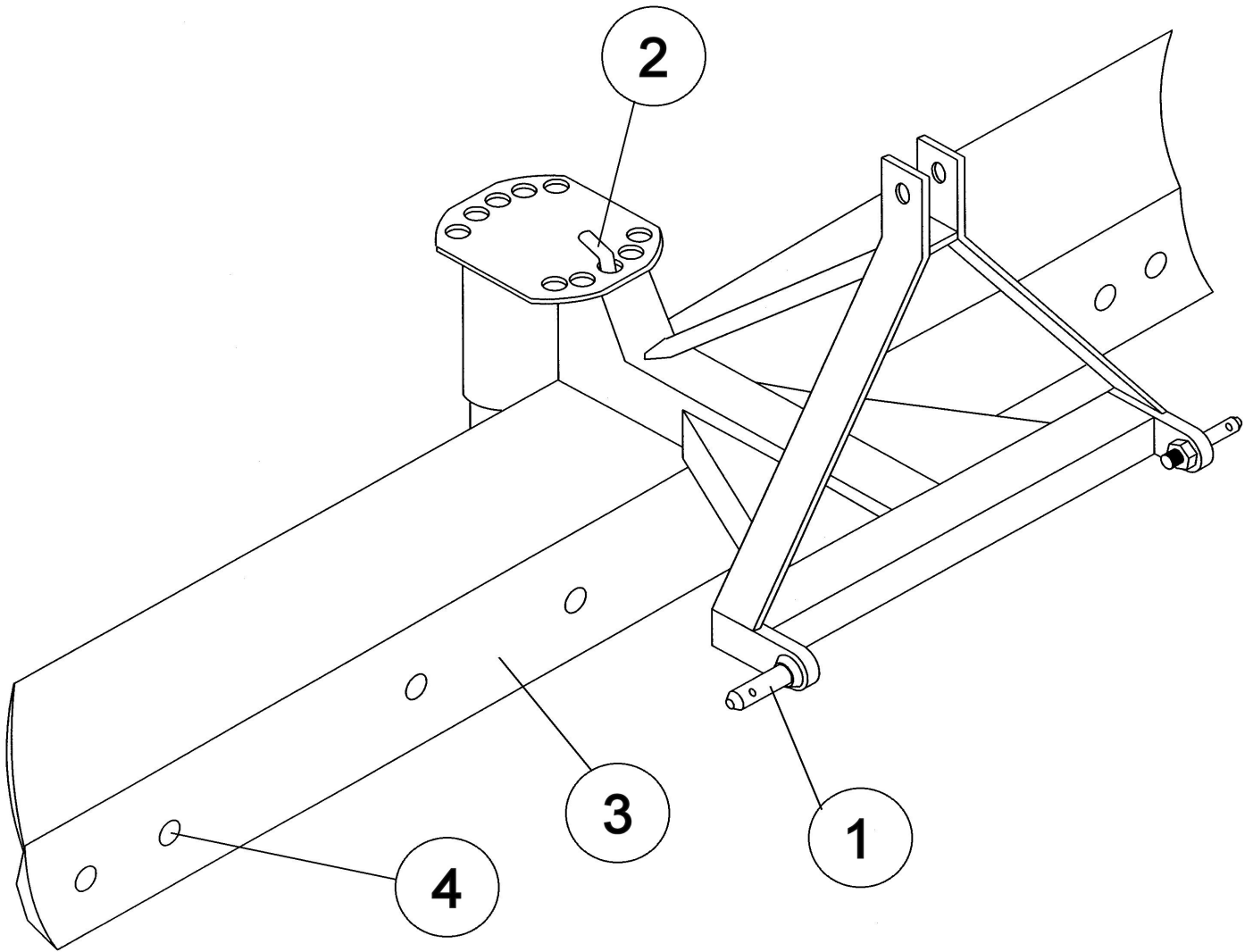
Ref. No.	Part Name	Part Number
1	(CAT. 1) Lift Pins (Pkg. 2)	500001
2	Hinge Pin	505003
3	Frame Latch Handle	325035
4	Latch Roller Assembly (not shown)	505001

# XB YARD RAKE



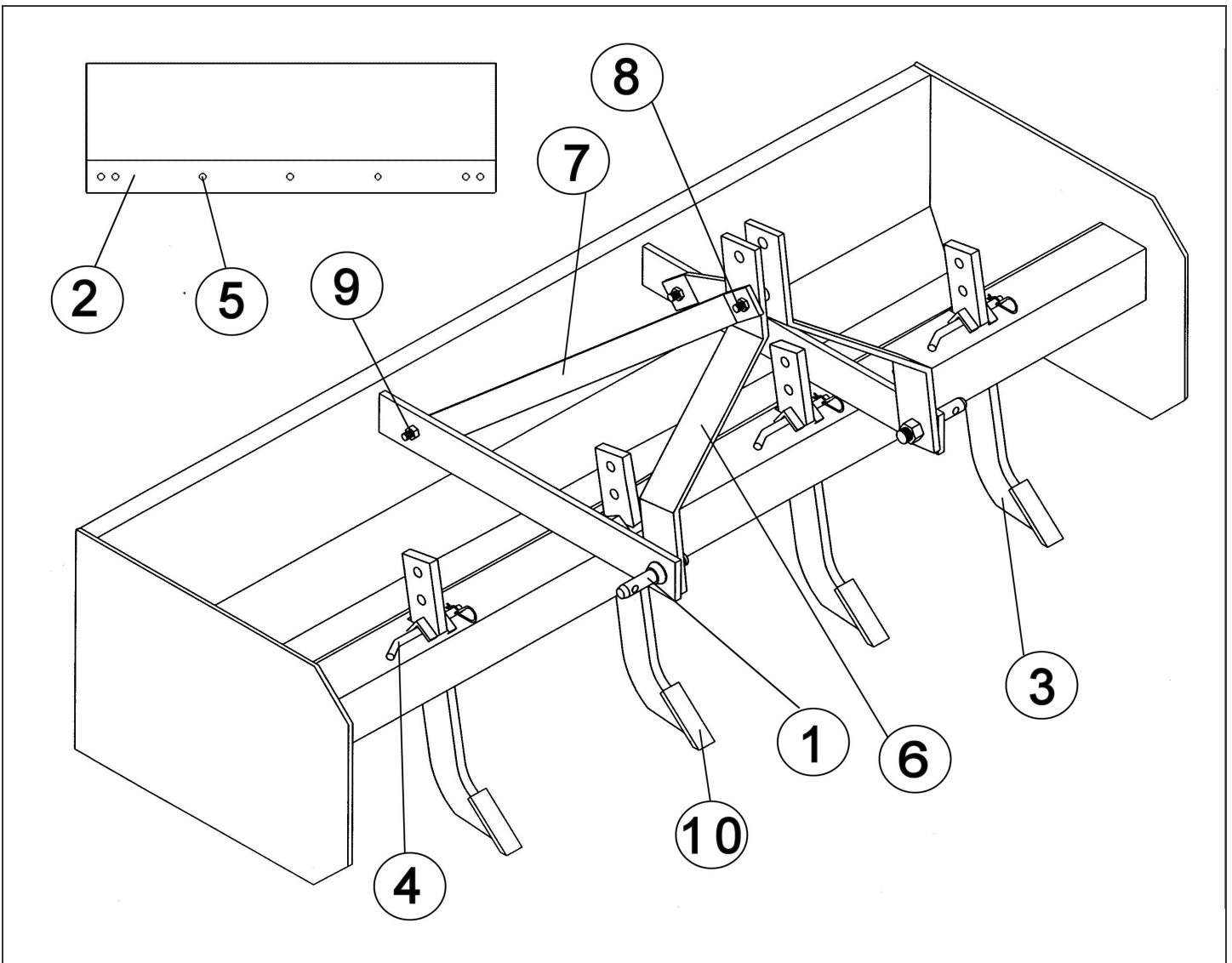
Ref. No.	Part Name	Part Number
1	(CAT. 1) Lift Pins (Pkg. 2)	500001
2	Index Pin	340065
3	Tines (5/PK)	503006
4	60" Strap	350063
5	3/8" x 1" Bolt	-
6	3/8" x 1-1/2" Bolt	-

# XB REAR BLADE



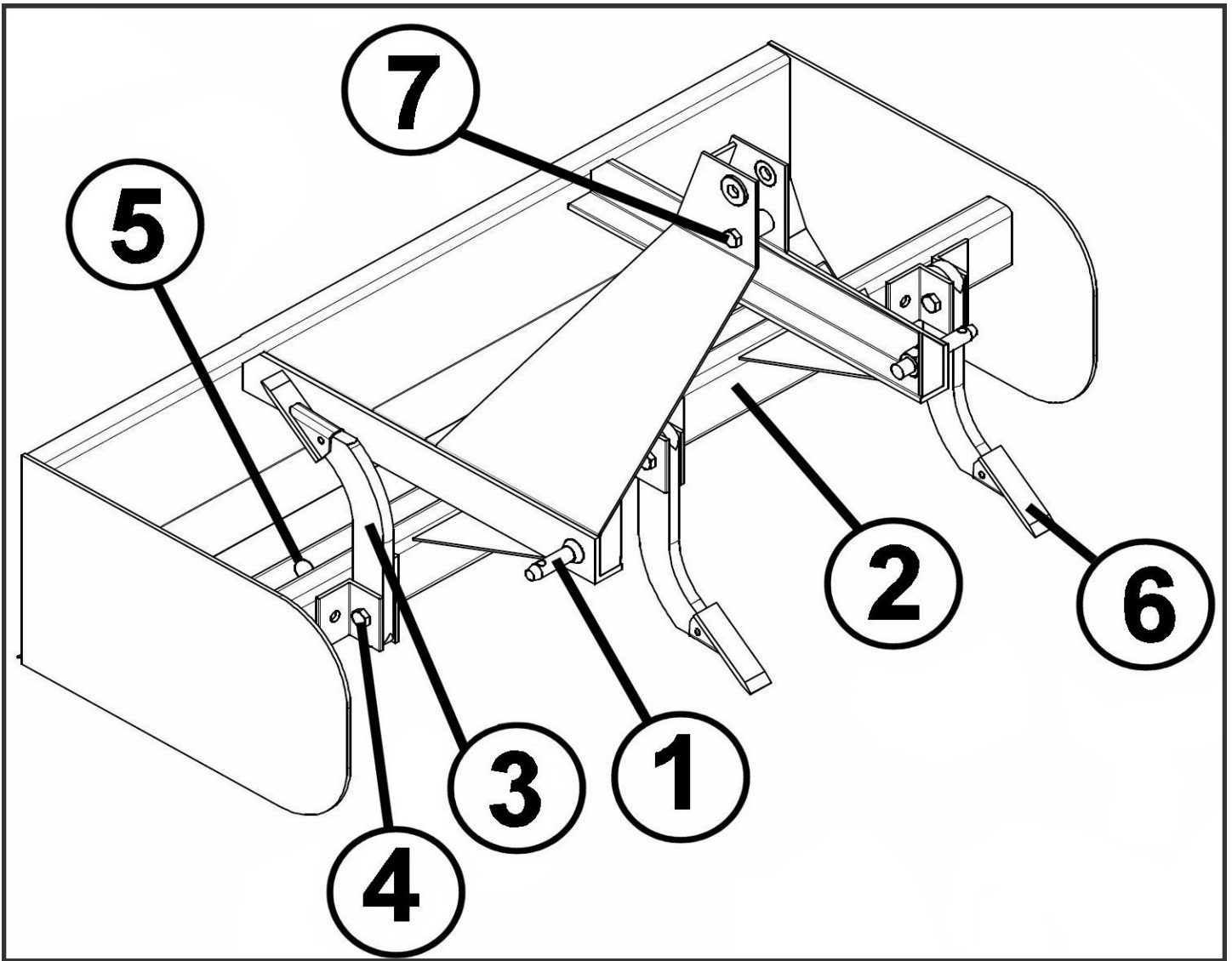
Ref. No.	Part Name	Part Number
1	(CAT. 1) Lift Pins (Pkg. 2)	500001
2	Index Pin	340065
3	60" Cutting Edge	188015
4	Cutting Edge Bolt Set (9/PK)	503001

# XB BOX BLADE



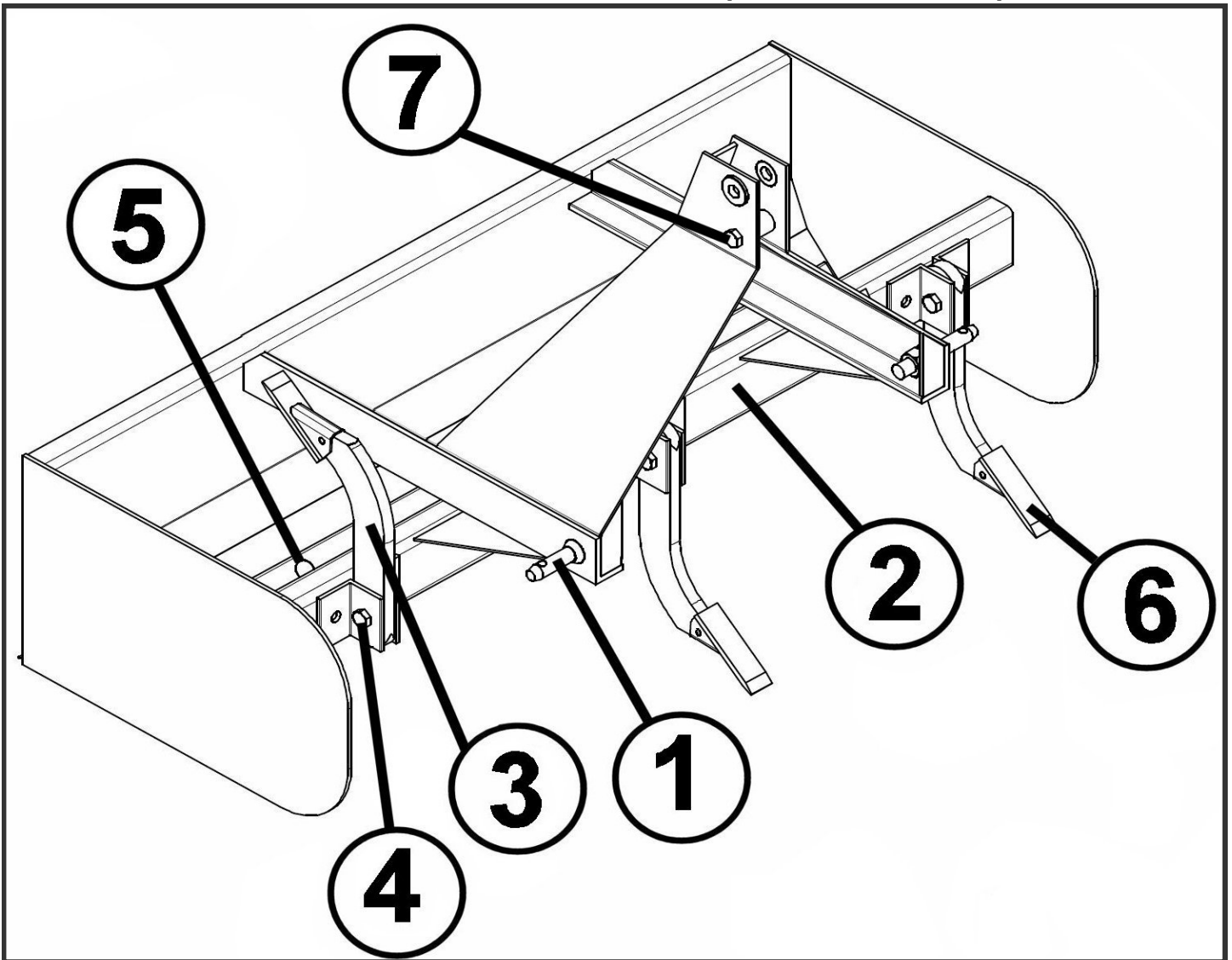
Ref. No.	Part Name	Part Number
1	(CAT. 1) Lift Pins (Pkg. 2)	500001
2	48" Cutting Edge	188005
3	Ripper Shank /w Tooth	403012
4	"L" Pin /w Hair Pin (4pk)	503501
5	Cutting Edge Bolt Set (9pk)	503001
6	Lift Arm	311055
7	Lift Arm Brace	311056
8	5/8" X 4-1/2" Lift Arm Spacer Kit	501090
9	5/8" X 2" Bolt	NA
10	Tooth (Weld on)	174010

## NEW XB BOX BLADE



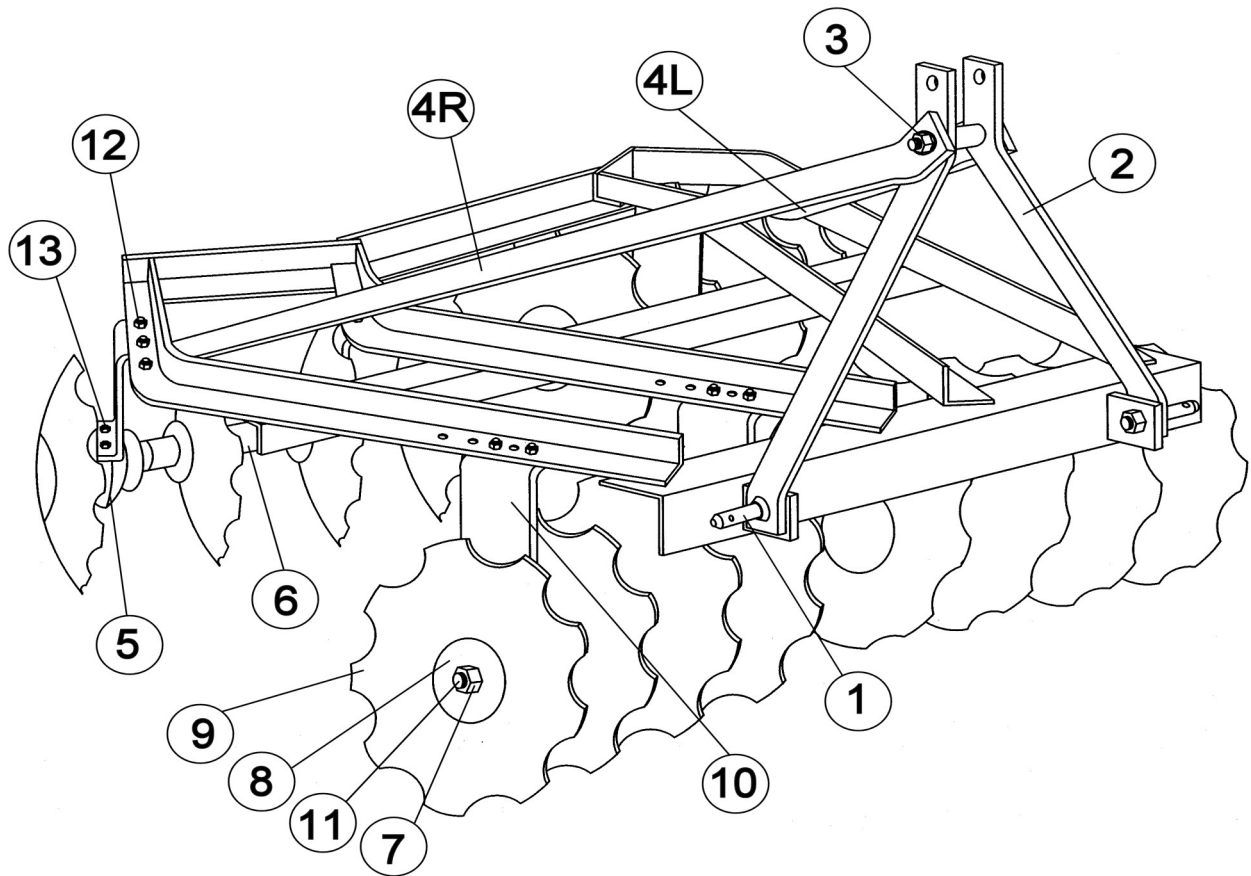
Ref. No.	Part Name	Part Number
1	(CAT. 1) Lift Pins (Pkg. 2)	500001
2	48" Cutting Edge	188006
3	Rotatable Ripper Shank /w Tooth	120002
4	Rotatable Ripper Shank Bolt Pkg. (Bolts & Locknuts 5 Ea.)	503505
5	Cutting Edge Bolt Set (9pk)	503001
6	Tooth (Weld on)	174010
7	5/8" X 4-1/2" Lift Arm Spacer Kit	504500

## EZ SHANK BOX BLADE (XBX SERIES)



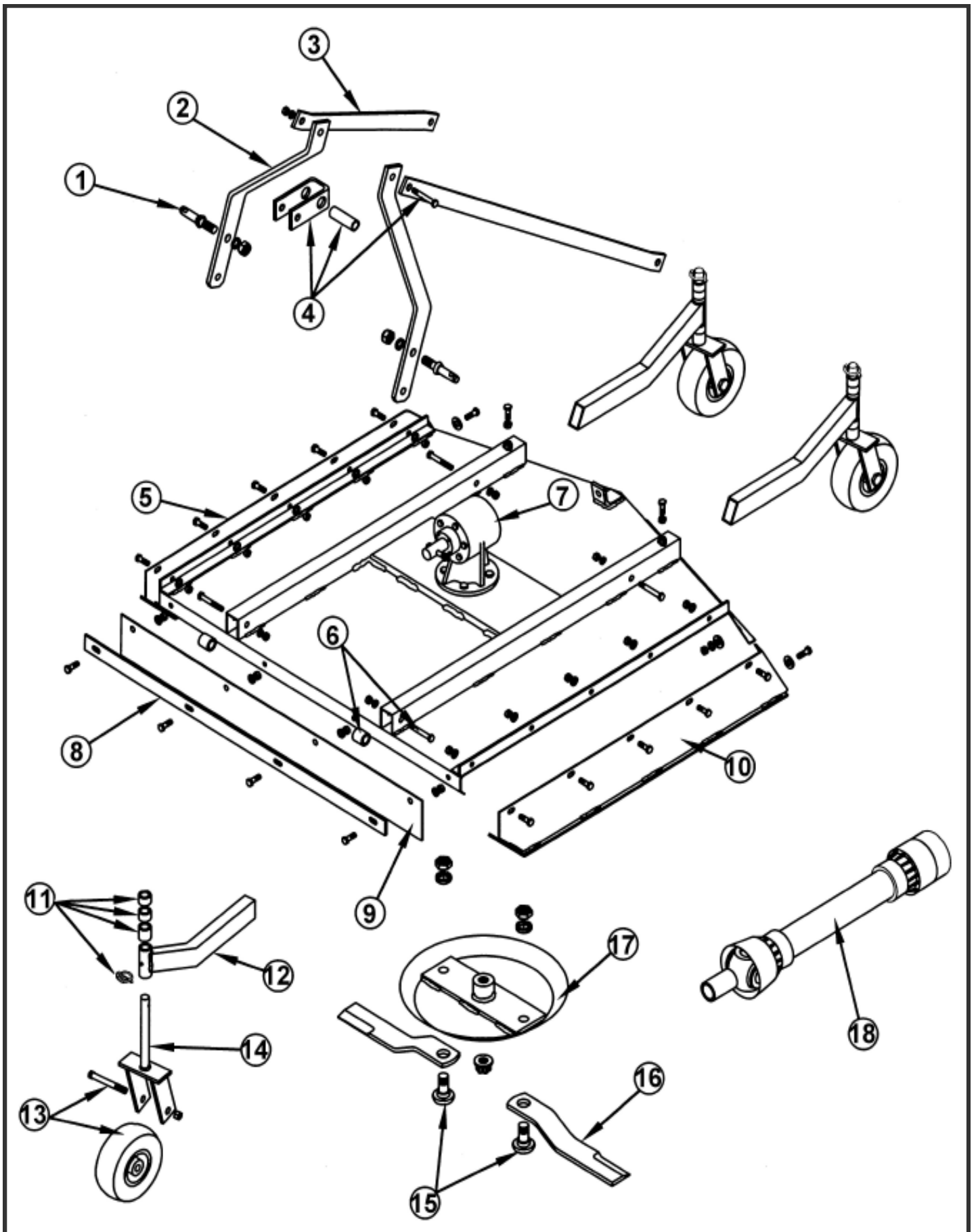
Ref. No.	Part Name	Part Number
1	(CAT. 1) Lift Pins (Pkg. 2)	500001
2	54" Cutting Edge	188009
2	66" Cutting Edge	188019
2	78" Cutting Edge	188027
3	Rotatable Ripper Shank /w Tooth	120002
4	Rotatable Ripper Shank Bolt Pkg. (Bolts & Locknuts 5 Ea.)	503505
5	Cutting Edge Bolt Set (9pk)	503001
6	Tooth (Weld on)	174010
7	5/8" X 4-1/2" Lift Arm Spacer Kit	504500

## XB ANGLE FRAME DISC



Ref. No.	Part Name	Part Number
1	(CAT. 1) Lift Pins (Pkg. 2)	500001
2	Lift Arms	311070
3	Lift Arm Spacer Kit	501090
4L	Lift Arm Brace LH	311071
4R	Lift Arm Brace RH	311072
5	Bearing Cap & Spool	504110
6	Spacer	129500
7	Locknuts -1" (Pkg-4)	504280
8	Axle Washer	322005
9	Disc Blade 14" - Notched	189214
10	Bearing Stand	311068
11	Axle	401035
12	1/2" x 1-1/2" Bolts	-
13	1/2" x 5-1/2' Bearing Cap Bolt Set (2pk)	504070

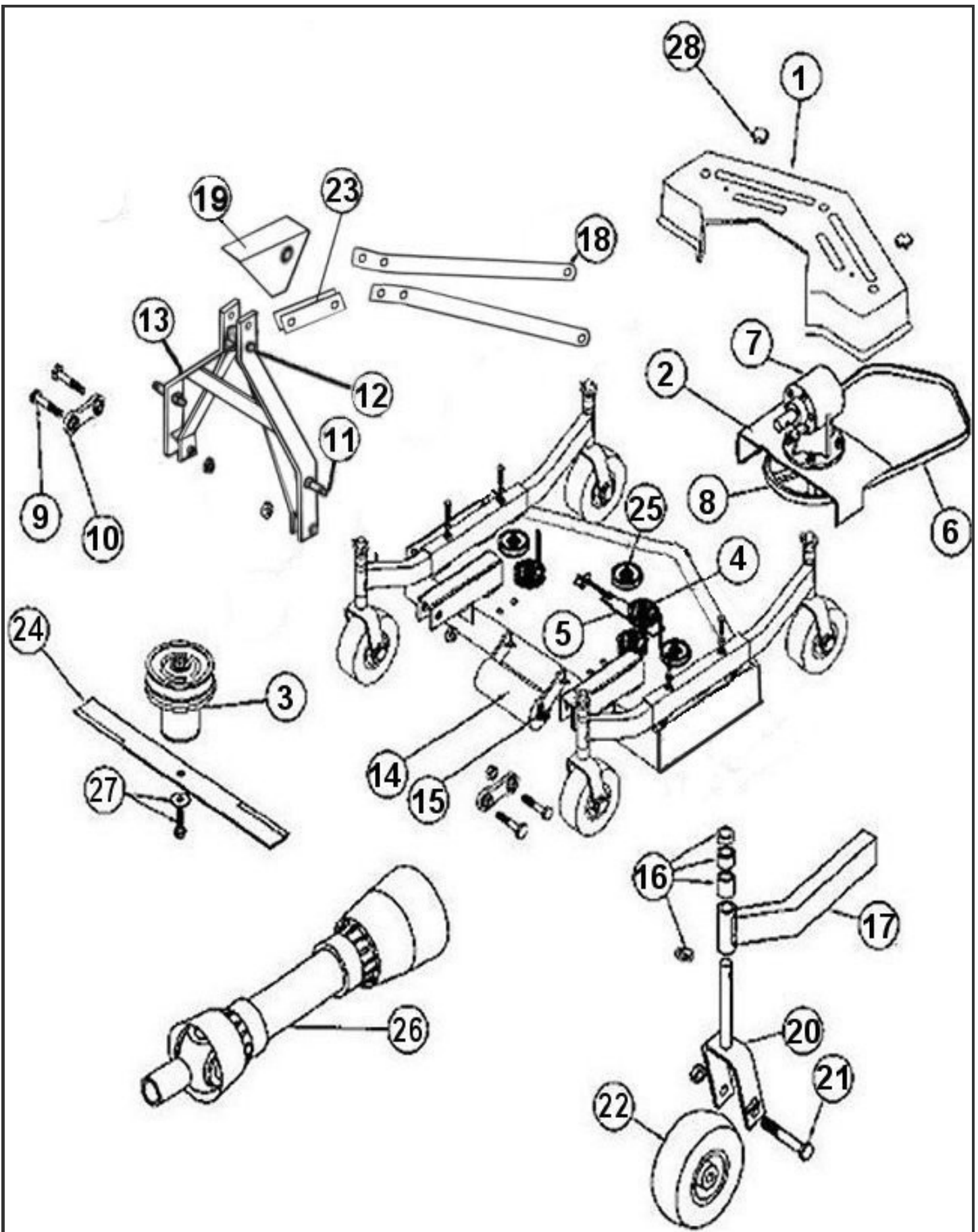
# XB & XBX KUTTER



## XB & XBX KUTTER PARTS

Ref. No.	Part Name	Part Number L-48-40-XB	Part Number L-60-40-XBX
1	CAT. 1 Lift Pins (Pkg. 2)	500001	500001
2	Lift Arm	311100	311100
3	Lift Arm Brace	311099	311099
4	Swivel Link Kit (inc. bolt)	501027	501027
5	Right Side Panel Kit (inc. bolts)	501003	501010
6	Lift Arm Attachment Kit (inc. bolts)	501005	501005
7	Gearbox	184000	184005
8	Belt Guard Kit (inc. belt & strip)	501006	501012
9	Belt Guard	311101	311147
10	Left Side Panel Kit (inc. bolts)	501004	501009
11	Tailwheel Arm Spacer Kit	501007	501007
12	Tail Wheel Arm	403700	403700
13	Wheel Kit (inc. axle bolt)	502020	502020
14	Tailwheel Arm Fork	403026	403026
15	Blade Bolt Set	501001	501001
16	Mower Blade Set	501118	501124
17	Stump Jumper	403031	403031
18	29" PTO Shaft	147029	147029

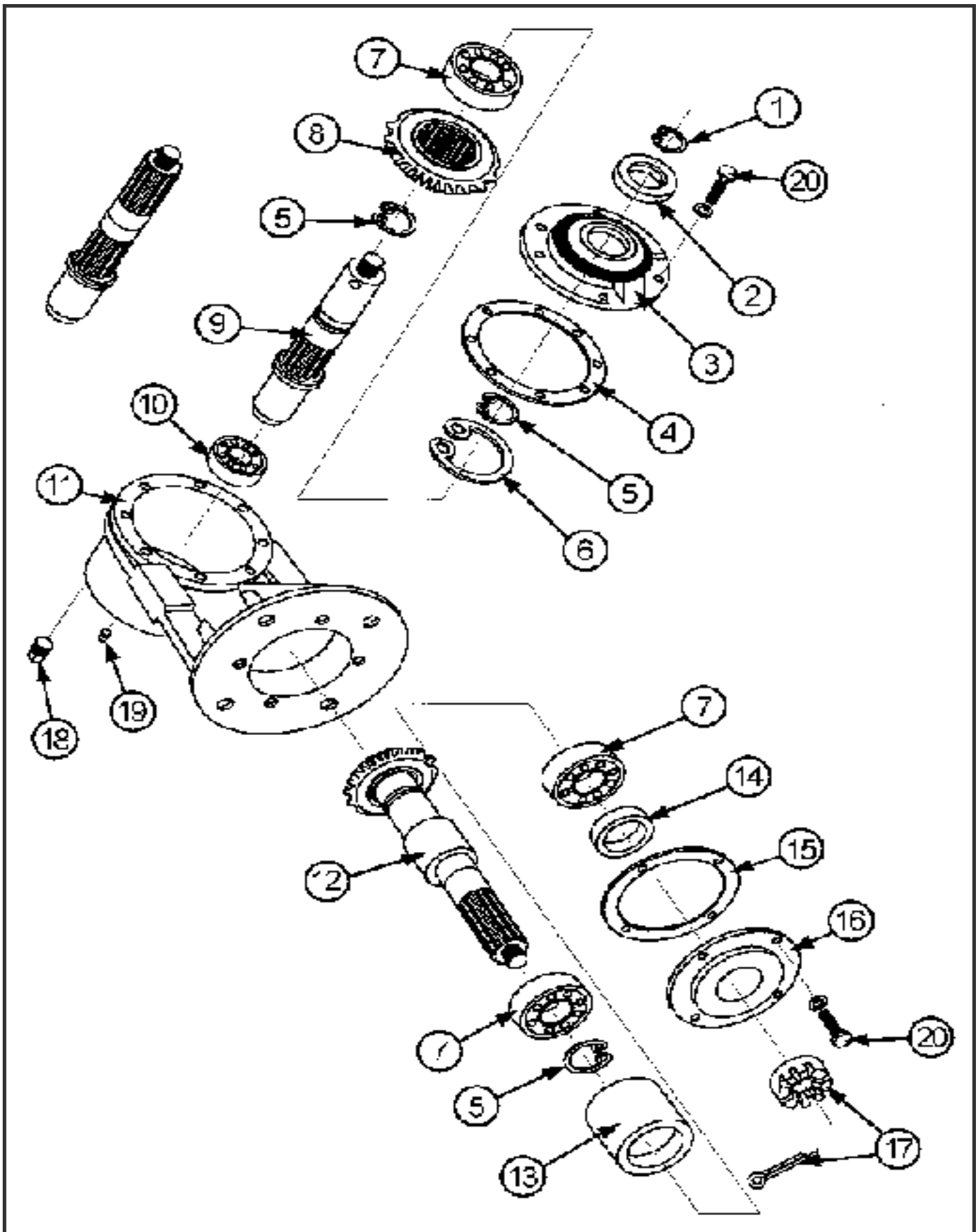
# FLEX HITCH XB REAR FINISHING MOWER



Ref. No.	Part Name	Part Number
1	Top Cover	124684
2	Gearbox Plate	403029
3	Spindle Unit -Single	502303
4	Idler Pulley -Single	164090
5	Belt Adjustment Assembly	403682
6	V -Belt*	167108 <sup>1</sup>
7	Gear Box	184000
8	Main Pulley -Single	165114
9	Swivel Link Bolts 3/4" x 4" w/ nuts	502011
10	Swivel Link Set	502010
11	CAT. 1 Lift Pin (Pkg. 2)	500001
12	Lift Arm Spacer w/ Nut & Bolt	501095
13	Lift Arm Assembly	403664
14	Center Roller w/ Axle	502110
15	Roller Axle	403670
16	Height Adjuster Set	502120
17	Tail Wheel Arm	403700
18	Brace Arm	310067
19	Pivot Shield Kit	501029
20	Wheel Fork	403023
21	Axle Bolt 3/4" x 5" w/ Nut	502125
22	Tire & Rim w/ Axle & Nut	502015
23	Pivot Bar	401031
24	Blade Set w/ Bolts	502316
25	Spindle Pulley - Single	502313
26	22" PTO Shaft	147022
27	LH Blade Bolt Set w/ Washers	502310
28	Plastic Knob	502297

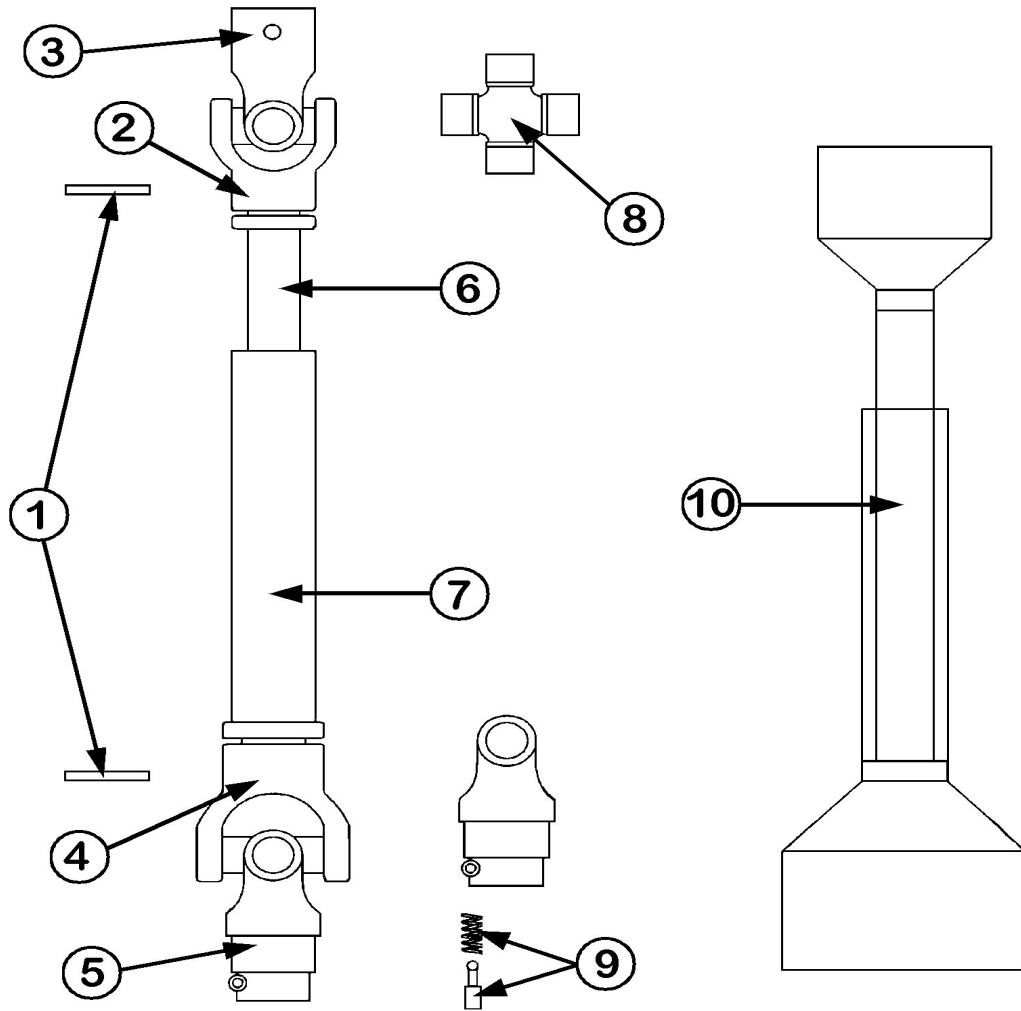
\*B-108

# 40 HP GEARBOX



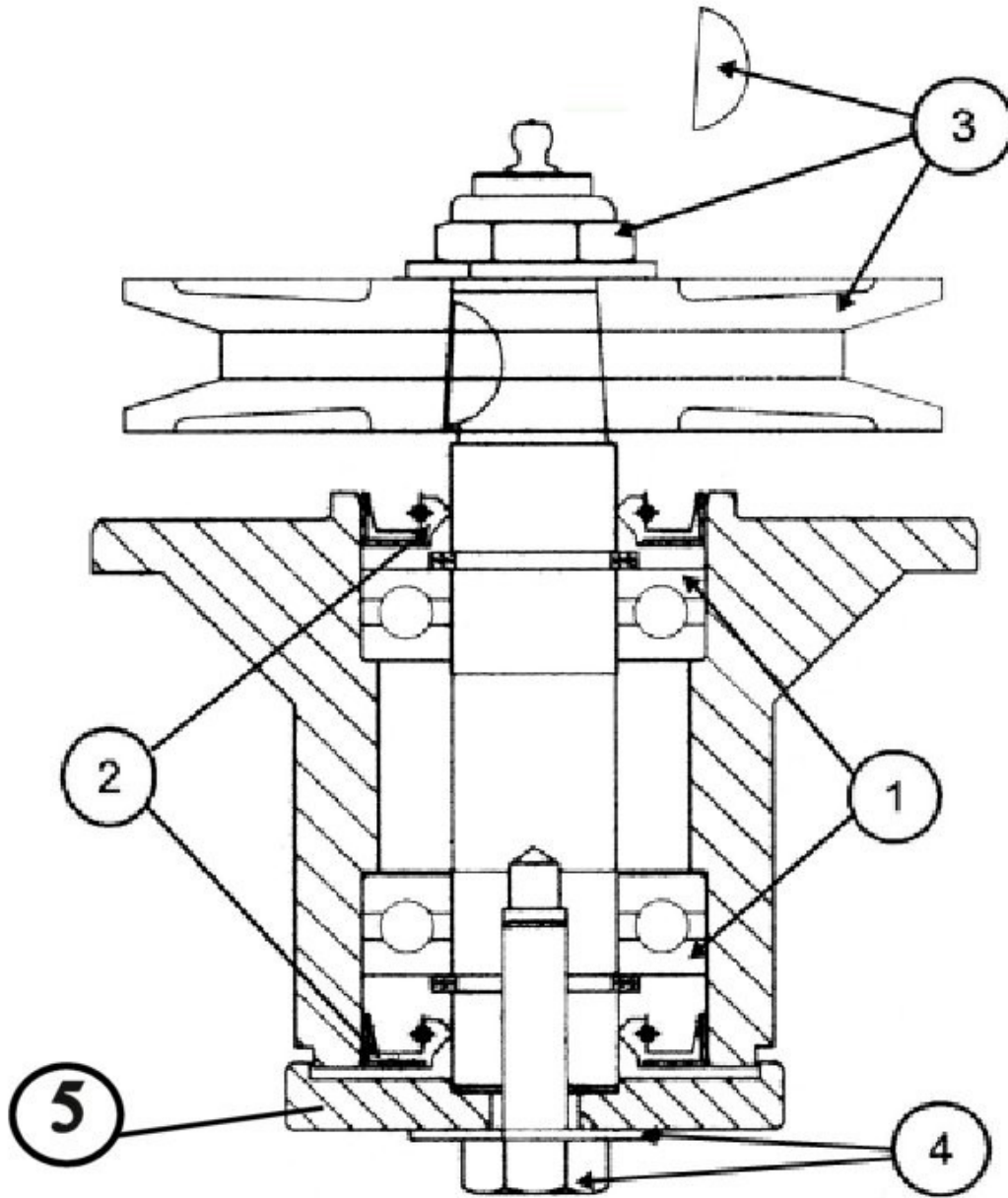


## SHEAR PIN PTO SHAFT



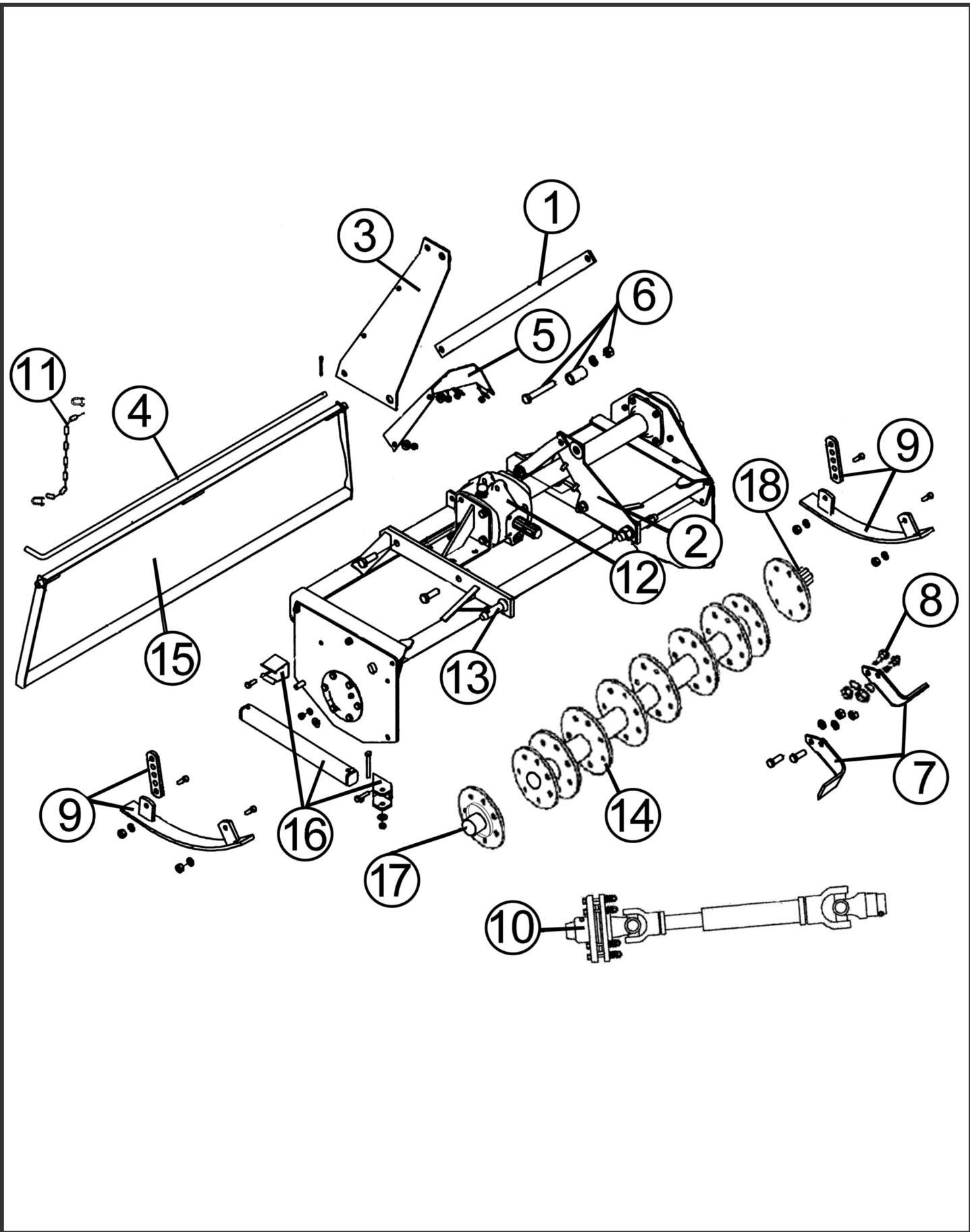
Ref. No.	Part Name	147022	147029	147034
1	Roll Pin Kit	500131	500131	500133
2	Male Tube End Yoke	151045	151045	151065
3	Implement End Yoke	151040	151040	151060
4	Female Tube End Yoke	151050	151050	151070
5	Tractor End Yoke	151035	151035	151055
6	Inner Tube 14 Series	151090	151090	151092
7	Outer Tube 14 Series	151091	151091	151093
8	Cross Kit # 4	170015	170015	170020
9	Quick Disconnect Pin	170110	170110	170110
10	Safety Shield BYPY	124310	124310	124315
10	Safety Shield Eurocardan	124311	124311	124316

# Blade Spindle Unit



Ref. No.	Part Name	502303	502300	502301	502304
1 & 2	Bearing Kit - (2) Ball Bearings (6205), (2) Seals (TCM25x52x7TC), (4) Snap Rings	555009	555009	555009	555009
3	Spindle Pulley /w Nut & Key	502313	502311	502312	502314
4	Blade Bolt Set (3) /w Washer	502310	502310	502310	502310
5	Spindle Cap	191302	191302	191302	191302

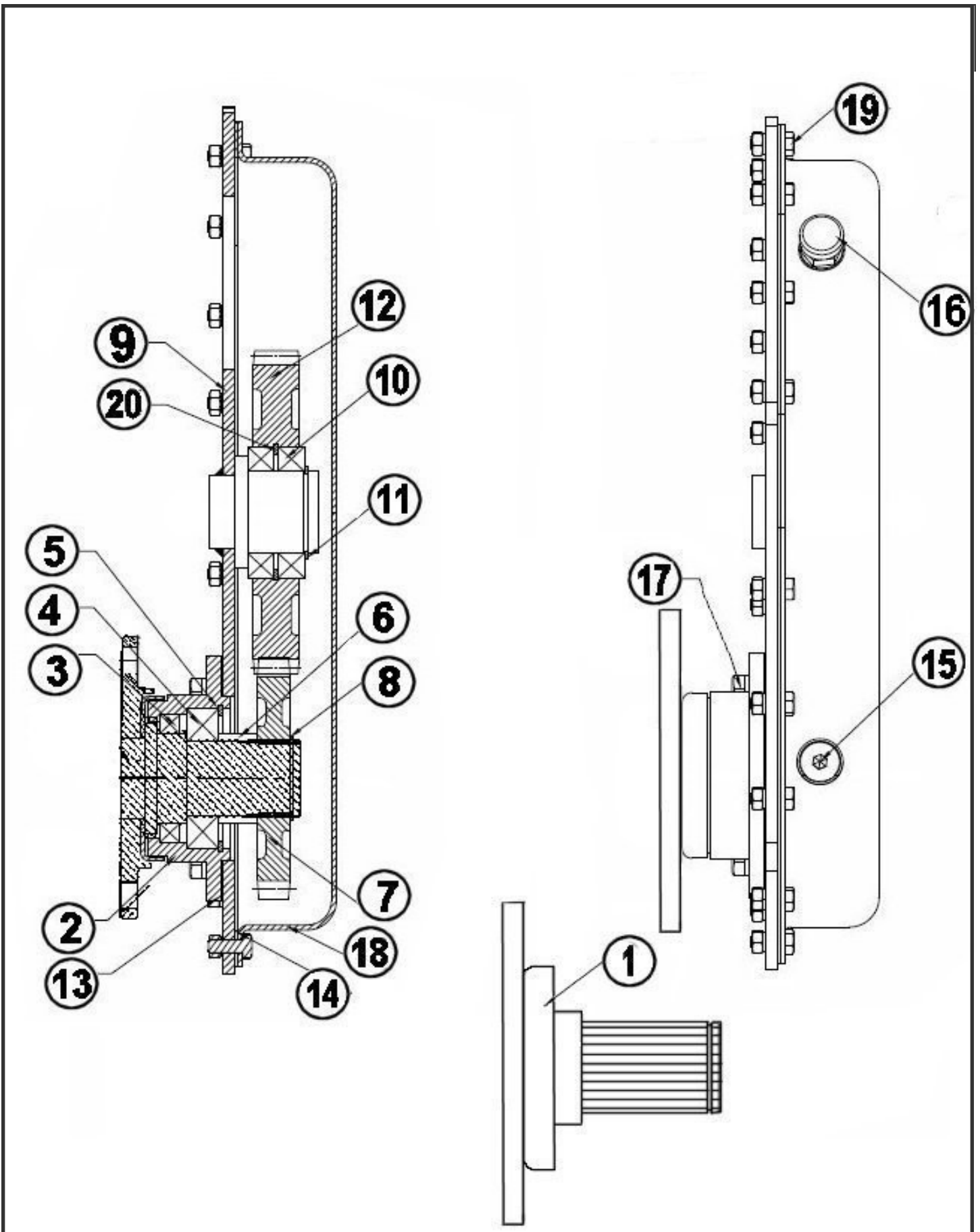
# XB & XBX TILLER: EXPLODED VIEW



## TG-48-XB & TG-54-XBX TILLER PARTS LIST

Ref. No.	Part Name	Part Number TG-48-XB	Part Number TG-54-XB
1	Lift Arm Brace	381001	381001
2	Lift Arm (LH)	404404	404404
3	Lift Arm (RH)	404405	404405
4	Tail Rod Assembly	505116	505117
5	Center Shield Assembly	505020	505020
6	Lift Arm Spacer Kit	505021	505021
7	Tine Pkg. (1-Right,1-Left) w/ Bolts	505002	505002
7	Tine Pkg. (3-Right,3-Left) w/ Bolts	505006	505006
7	Complete Tine Pkg. (36 pcs.)	505036	505036
8	Tine Bolt Pkg. (12 pcs.)	505012	505012
8	Tine Bolt Pkg. (72 pcs.)	505072	505072
9	Skid Assembly Left or Right	505060	505060
10	PTO Shaft w/ 6" Clutch Only	147122	147122
11	Chain & Shackle Kit	505140	505140
12	Top Gearbox	184074	184074
13	Lift Pins Cat. 1 (2/Pk)	500001	500001
14	Rotor	404403	404420
15	Back Plate	404406	404415
16	Support Stand Assembly	505022	505022
17	Hub Stub Shaft w/Disc	See Page26	See Page26
18	Side Gearbox Hub & Shaft w/Disc	See Page 22	See Page 22

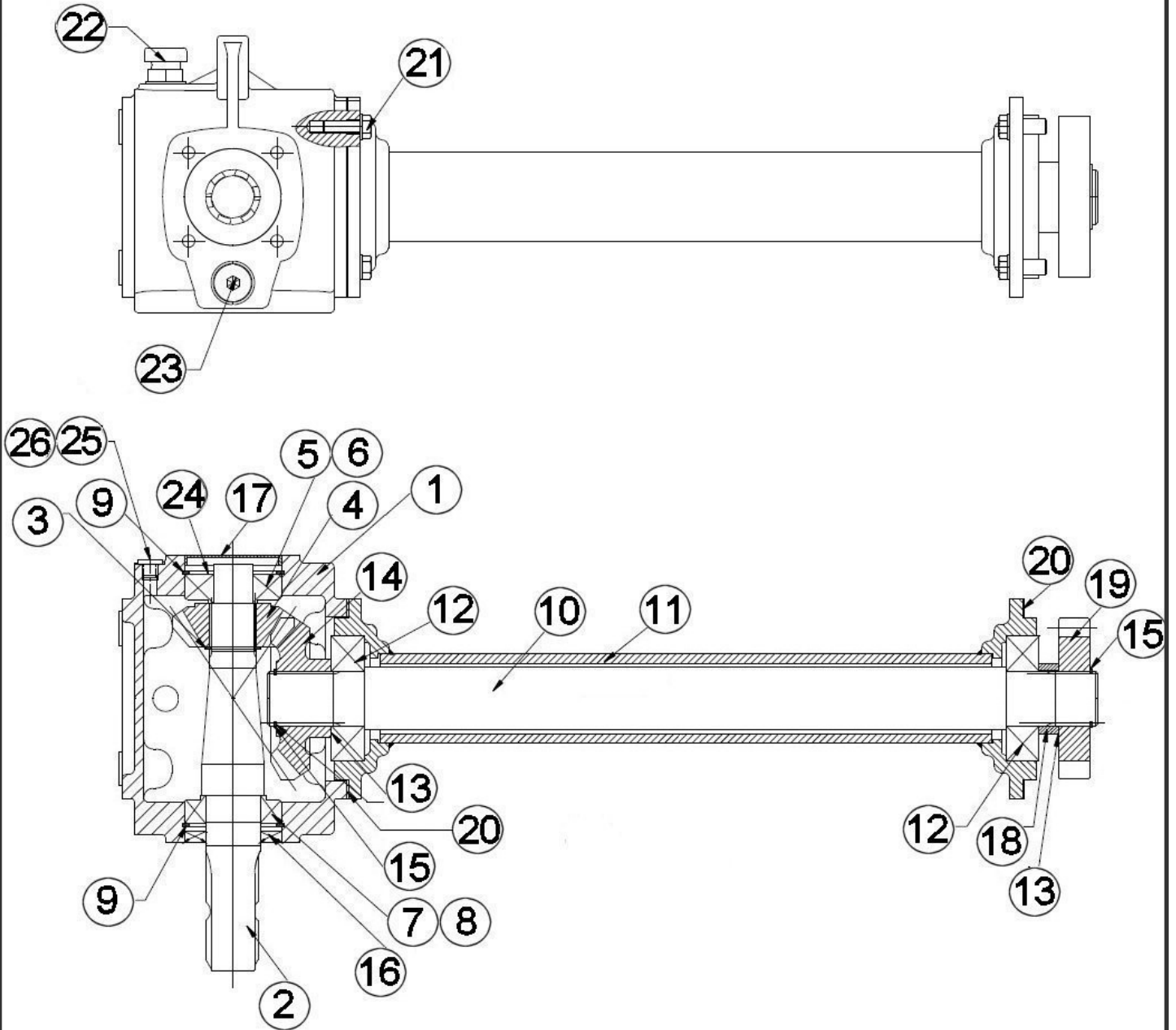
# TG-48-XB & TG-54-XBX SIDE GEARBOX PARTS



## TG-48-XB & TG-54-XBX SIDE GEARBOX PARTS LIST

Ref. No.	Part Name	Part Number TG-48-XB	Part Number TG-54-XB
1	Side Gearbox Hub & Shaft w/Disc	100106	100106
2	Hub	977028	977028
3	Oil Seal (55 X 78 X 12) Dbl Lip	977029	977029
4	Bearing (ISO 1209)	977030	977030
5	Snap Ring (ID 85mm X OD 90.5)	977031	977031
6	Spacer (55 X 46 X 23.5)	977032	977032
7	Spur Gear (27 Teeth)	977033	977033
8	Snap Ring (45mm X ID 41.5)	977034	977034
9	Housing	977035	977035
10	Bearing (6010)	977036	977036
11	Snap Ring (50mm X ID 45.8)	977037	977037
12	Spur Gear (38 Teeth)	977038	977038
13	Gasket Round	977039	977039
14	Gasket	977040	977040
15	Pipe Plug 1/2" - 14 NPT	977019	977019
16	Pressure Relief Plug 1/2" - 14NPT	902007	902007
17	Hex Cap Screw, Lockwasher(Pkg.4)	505024	505024
18	Cover	977041	977041
19	Hex Cap Screw, Lock Washer, Nut (8-Pk)	505023	505023
20	Snap Ring (80mm X OD 85.5)	977046	977046

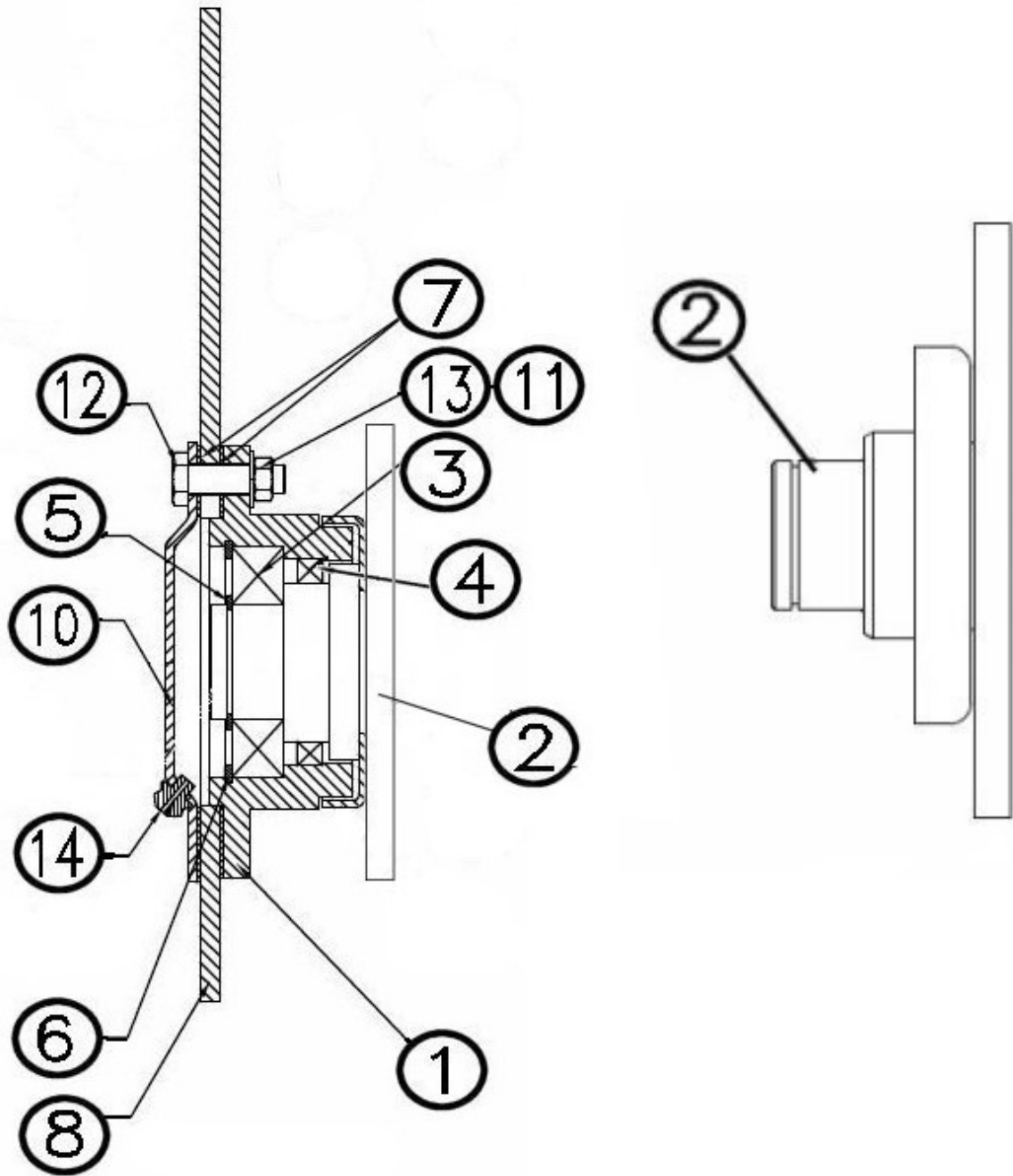
# TG-48-XB & TG-54-XBX SERIES TOP GEARBOX



## TG-48-XB & TG-54-XBX SERIES TOP GEARBOX PARTS LIST

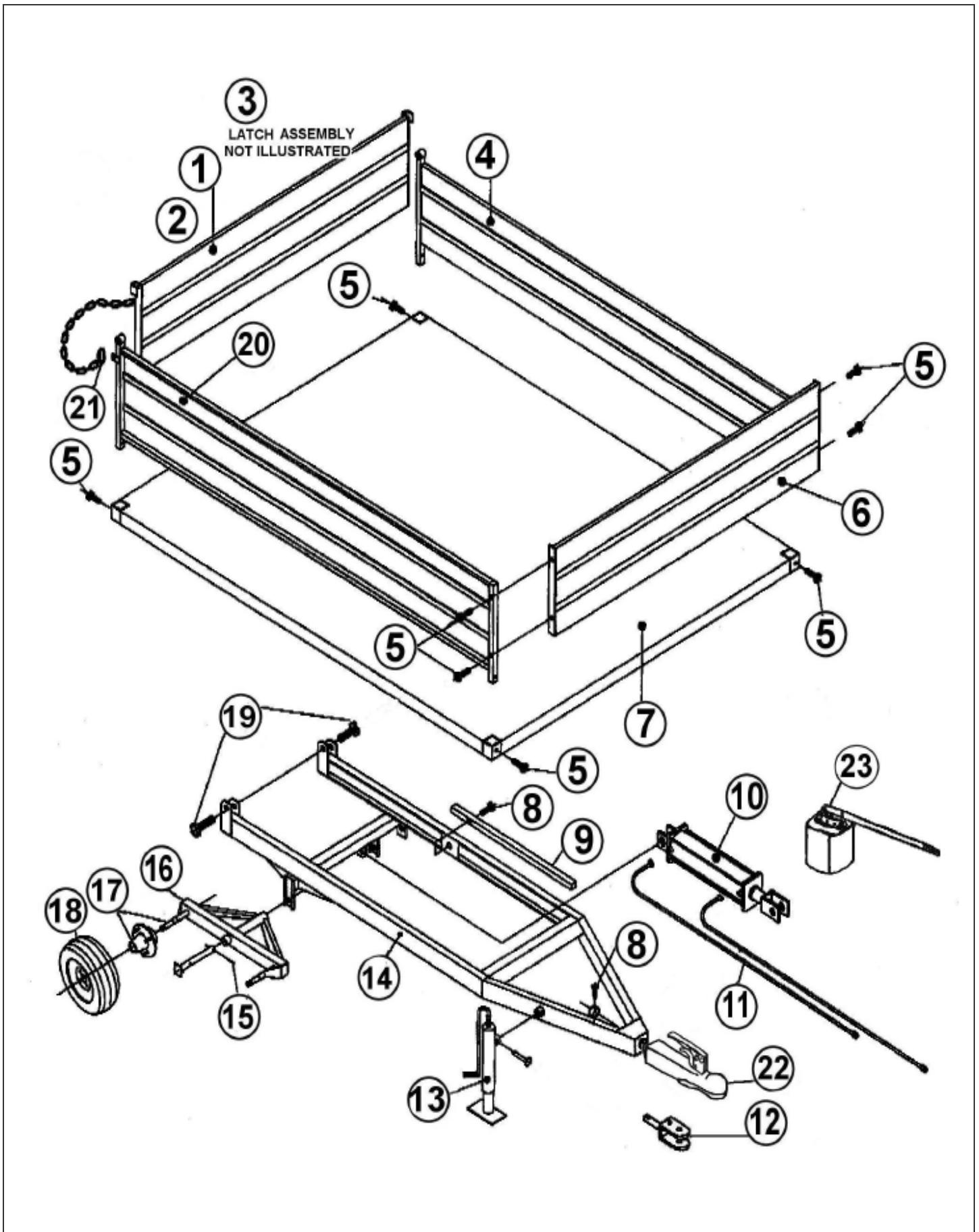
Ref. No.	Part Name	Part Number TG-48-XB	Part Number TG-54-XB
1	Housing	977001	977001
2	Input Shaft	977002	977002
3	Retaining Ring 30mm x 27.9 ID	977003	977003
4	Bevel Pinion (13 Teeth)	977004	977004
5	Bearing Cone (30305)	977005	977005
6	Bearing Cup (30305)	977006	977006
7	Bearing Cone (32007x)	977007	977007
8	Bearing Cup (32007x)	977008	977008
9	Retaining Ring 62mm X 66 OD	977009	977009
10	Output Shaft	977010	977025
11	Hub Cap	977011	977026
12	Bearing (6307)	155007	155007
13	Shim, Output OD 47 X ID 35.2	902312	902312
14	Bevel gear (19Teeth)	977012	977012
15	Retaining Ring 34mm X 31.5 ID	977013	977013
16	Seal Input (13997) 35 X 62 X 8	977014	977014
17	Freeze Plug	977015	977015
18	Spacer 45 X 36 X 12.4	977016	977016
19	Spur Pinion (18 Teeth)	977017	977017
20	Gasket	977018	977018
21	Hex Cap Screw, Lockwasher(4-Pk)	505024	505024
22	Pressure Relief Plug 1/2" - 14NPT	902007	902007
23	Flange Plug 1/2" - 14NPT	977019	977019
24	Shim, Input OD 60 X ID 50	977022	977022
25	Flange Plug (M10 - 1.0)	977023	977023
26	O-Ring(- 011)	977024	977024

# TG-48-XB & TG-54-XBX HUB PARTS



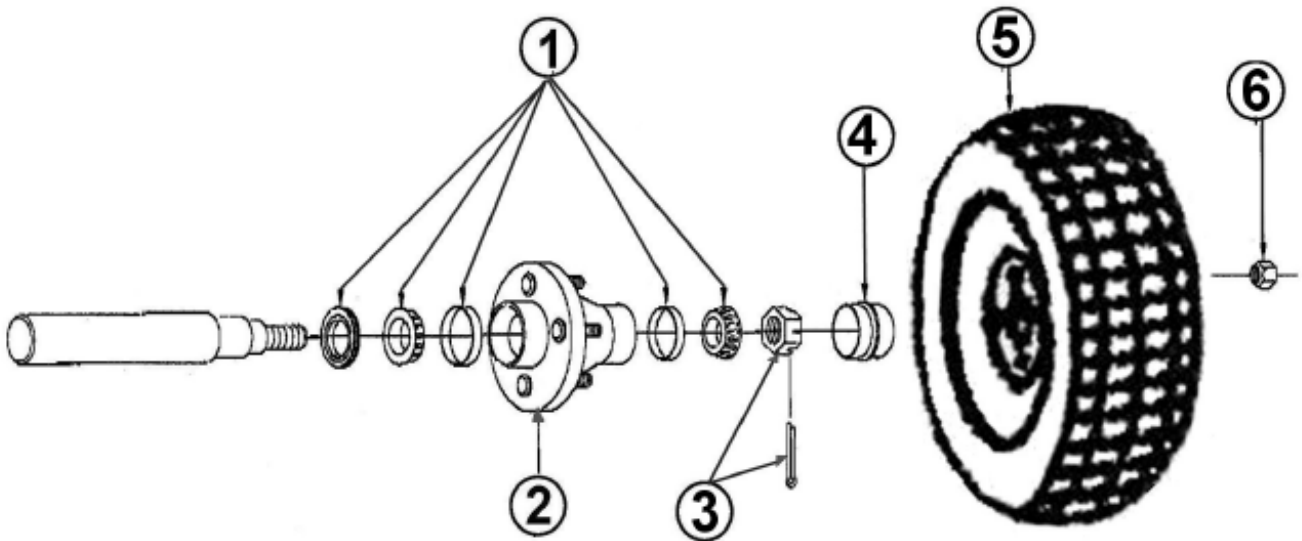
Ref. No.	Part Name	Part Number
1	Hub	977047
2	Hub Stub Shaft w/Disc	100107
3	Bearing (6208)	977048
4	Oil Seal (55 X 72 X 9)	977049
5	Snap Ring (40 x 1.5) 40mm X ID 36.5	977050
6	Snap Ring (80 x 2.5)	977046
7	Gasket	977039
8	Mounting Plate	977051
10	Cover	977052
11	Lock Washer (M10)	977021
12	Hex Cap Screw (M10-1.5 x 35)	977053
13	Nut (M10 -1.5)	977054
14	Grease Zerk (1/4")	132018

# XB - DUMP TRAILER



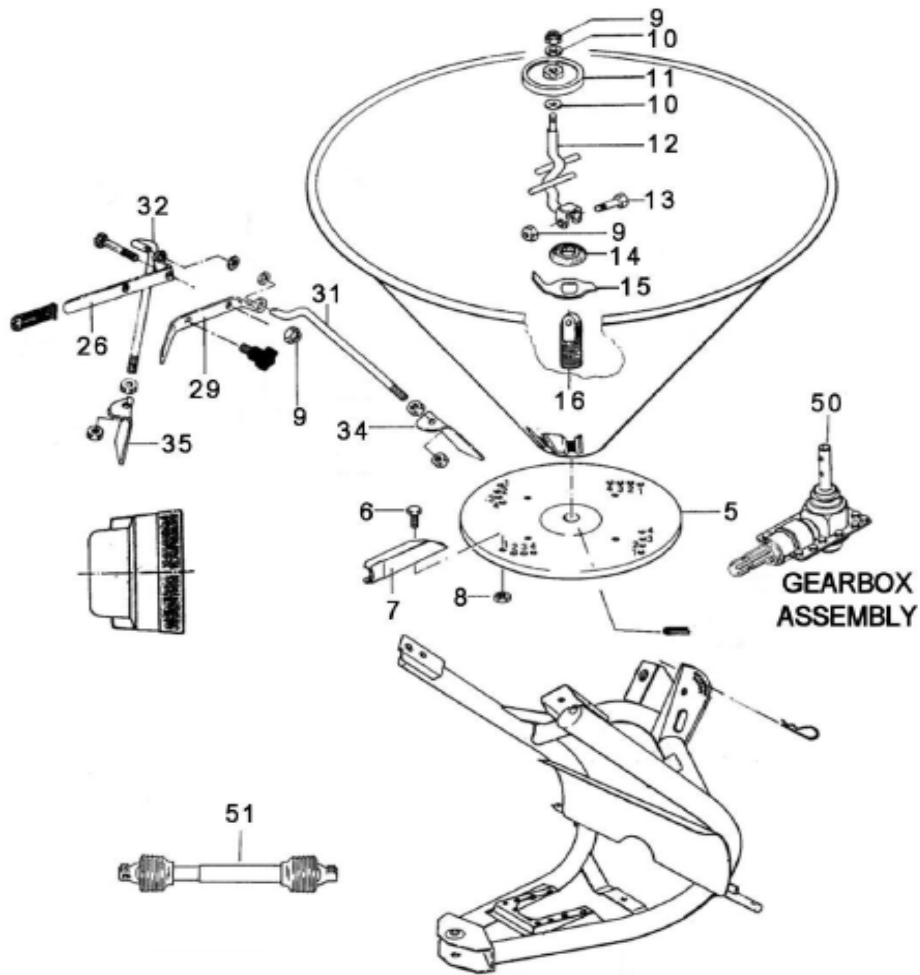


# 1-1/2 TON TIRE & WHEEL HUB



Ref. No.	Part Name	Part Number
1	Bearing Pkg. (1) Seal, (2) Bearings L44643, (2) L44610	906021
2	Hub Wheel 4-Bolt	906015
3	1" Slotted Hex Nut & Cotter Pin (5/32 x 1-1/4) Pkg.	906023
4	Cap Hub	906017
5	Rim & Tire 8.5 x 8 Turf Saver	906018
6	Lugnut 1/2" UNF (Pkg. 8)	906020

# XB SEEDER



Ref. No.	Part Name	Part Number
5-8	Spreader Disc /w Blades	900004
9-13	Agitator	900138
11	Buffer Wheel	900005
14-16	Lower Agitator Kit	509000
26	Left Hand Shutter Lever	900120
29	Right Hand Shutter Lever	900122
31	Right Hand Lever Tie Rod	900123
32	Left Hand Lever Tie Rod	900121
34-35	Shutters 1-Left & 1-Right	509001
50	Gearbox	900110
51	20" PTO Shaft	147020



### **1. Limited Warranty.**

King Kutter, Inc. ("King Kutter"), P.O. Box 1200, Winfield, Alabama 35594, warrants to the original retail purchaser ("Purchaser") that the product that is the subject of this sale is free from defects in material and workmanship at the time of sale.

Under this warranty, King Kutter will repair the defective product free of charge to the Purchaser, with either new or used and reconditioned replacement parts. All warranty service will be performed at service centers designated by King Kutter. If King Kutter is unable to repair the product to conform to the warranty after a reasonable number of attempts, King Kutter will provide, at its option, one of the following: (a) a replacement for the product or, (b) a full refund of the purchase price. Repair, replacement, or refund are the Purchaser's EXCLUSIVE remedies against King Kutter under this limited warranty. King Kutter will not be liable for any special, incidental or consequential damages based upon breach or warranty, breach of contract, negligence, strict tort liability, or any other legal theory. Such damages include, but are not limited to, loss of profits, loss of savings or revenue, loss of use of the product or any associated equipment, cost of capital, cost of any substitute equipment, facilities or services, down time, the claims of third parties including customers, and injury to property. These limitations also apply, to the extent allowed by law, to personal injury.

The purchaser must notify the Seller in writing of any defect in material or workmanship within one (1) year following the date of purchase. If the equipment is used for commercial purposes, the Purchaser must notify the Seller in writing of any defect in material or workmanship within ninety (90) days following the date of purchase. In no event will King Kutter be liable under this warranty unless written notice is received by the Seller within one (1) year from the date of original retail sale.

### **2. Warranty of Title.**

King Kutter warrants that it transfers a good title to the product free of any encumbrances, and free of the rightful claim of any third party for infringement of patent or copyright.

### **3. What is Not Covered by This Limited Warranty.**

King Kutter will not be responsible for damage to or failure in the product which results from accident, misuse, abuse, neglect, installation of attachments not provided by King Kutter, modifications to the product, or damage caused by use of the product for purposes other than those for which it was designed.

### **4. No Other Warranties.**

Unless modified in writing and signed by both parties, this agreement is understood to be the complete and exclusive agreement and warranty between King Kutter and Purchaser, superseding all prior agreements, oral and written, and all other communication between King Kutter and Purchaser related to the subject matter of this agreement.

THIS LIMITED WARRANTY IS IN LIEU OF ALL OTHER WARRANTIES, EXPRESS OR IMPLIED, INCLUDING, BUT NOT LIMITED TO, THE IMPLIED WARRANTY OF MERCHANTABILITY AND THE IMPLIED WARRANTY OF FITNESS FOR A PARTICULAR PURPOSE. No employee of King Kutter nor anyone else is authorized to make any warranty or representation in addition to or different from those made in this agreement.

### **5. Allocation of Risk.**

This agreement allocates the risk of product failure between King Kutter and the Purchaser. This Allocation is recognized by both parties as reflected in the price of the goods. The Purchaser acknowledges that he or she has read this agreement, understands it, and is bound by its terms.