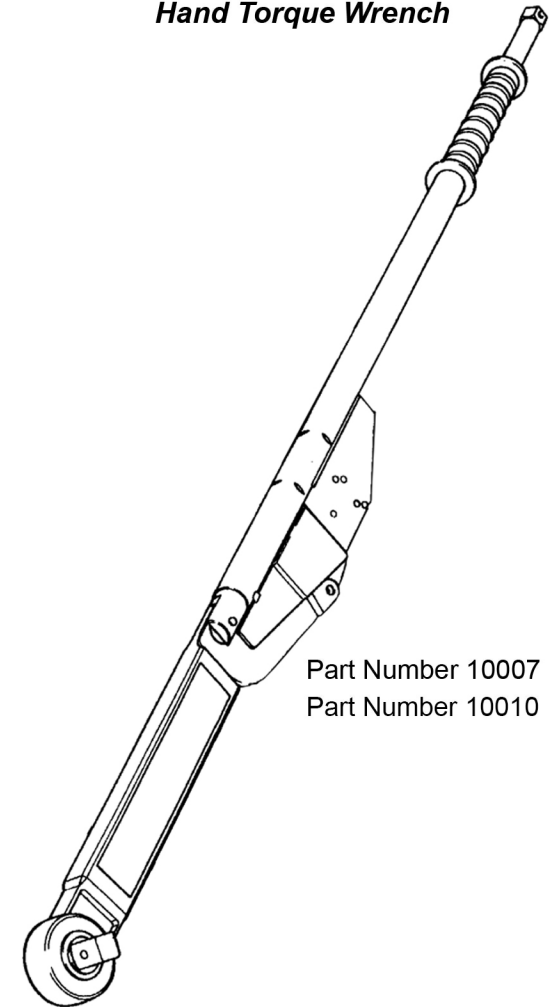
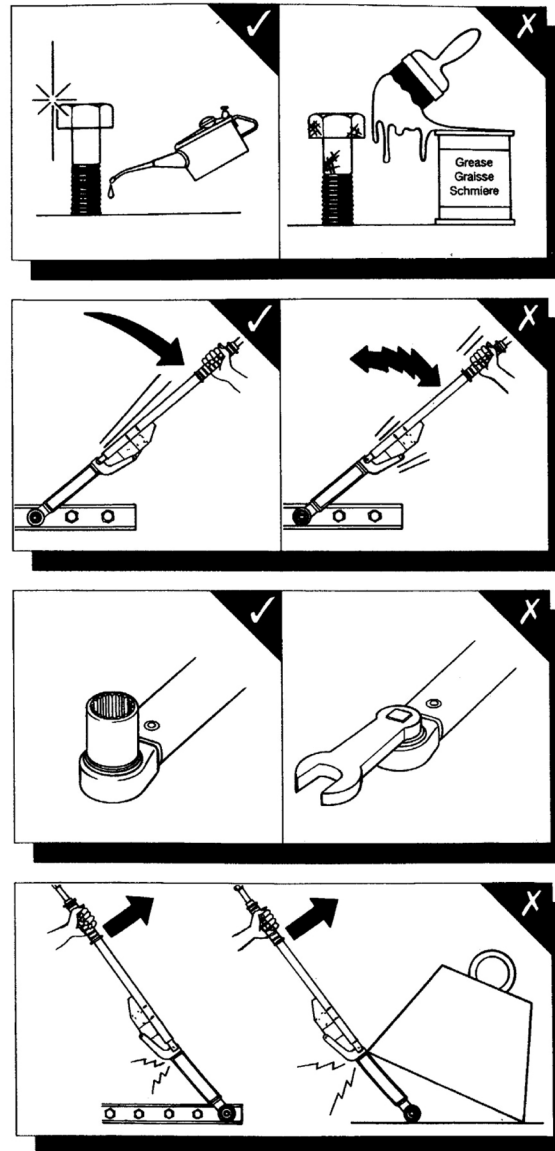
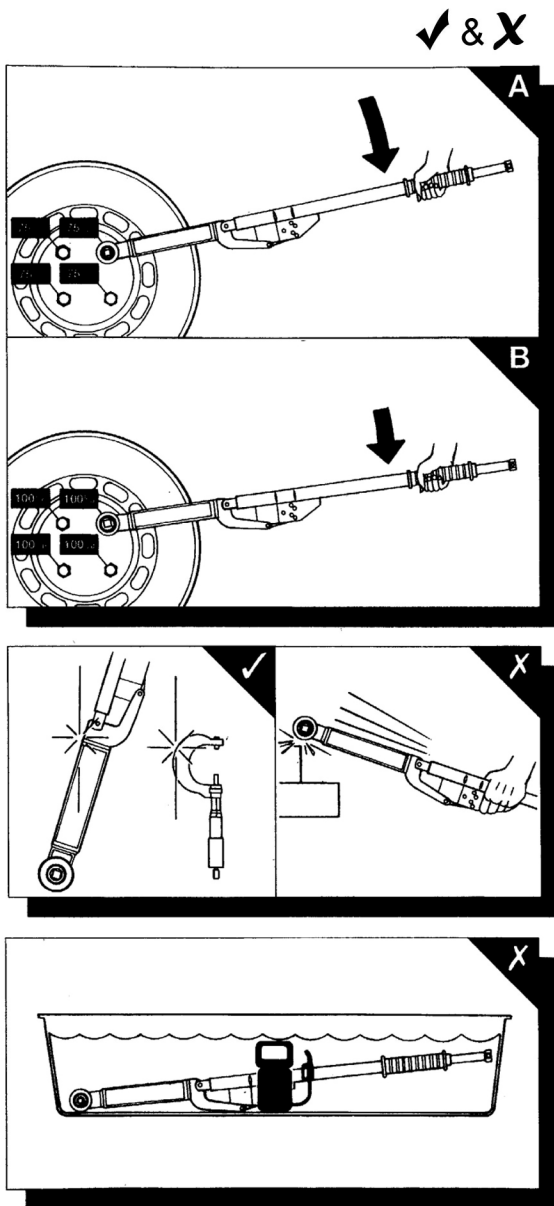




Break-Back Style

Hand Torque Wrench



Part Number 10007
Part Number 10010

✓ = Yes X = No

✓ = Yes X = No

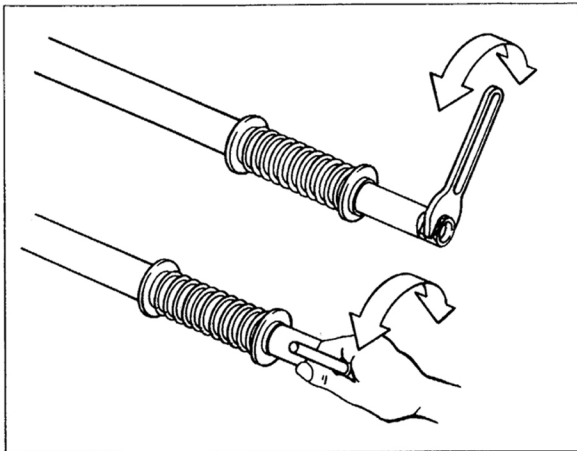
Equipment Supply Company

15270 Flight Path Drive

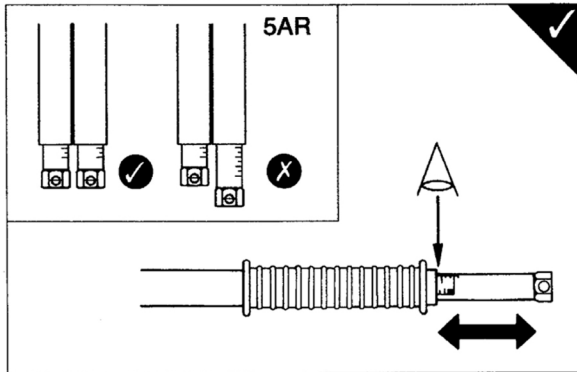
Brooksville, FL 34604

352-754-1117 • Fax 352-754-4508

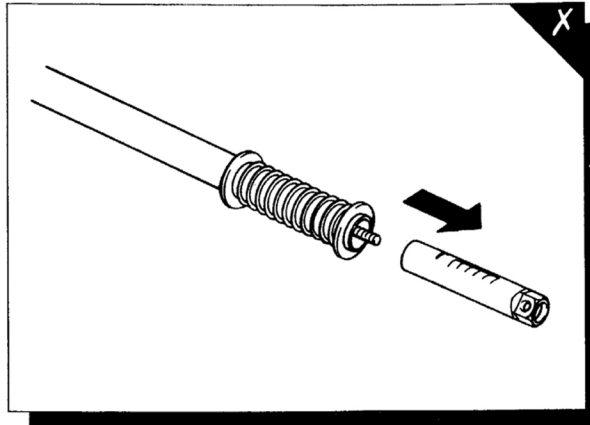
www.esco.net • sales@esco.net



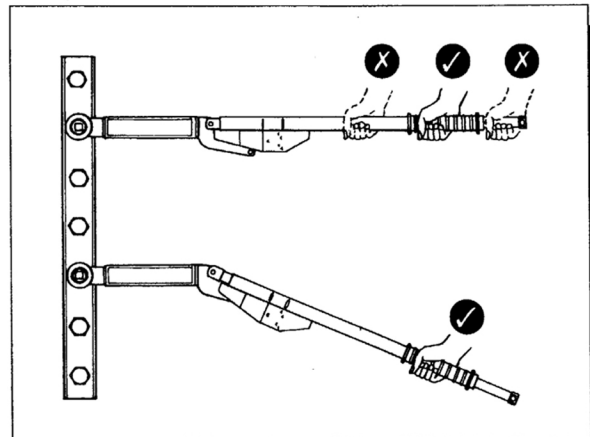
- Turn nut to adjust
- Tournez l'écrou pour effectuer le réglage
- Schlüssel durch Drehen der Skalenspindel einstellen
- Girare il dado per effettuare la regolazione
- Girar la tuerca para ajustar



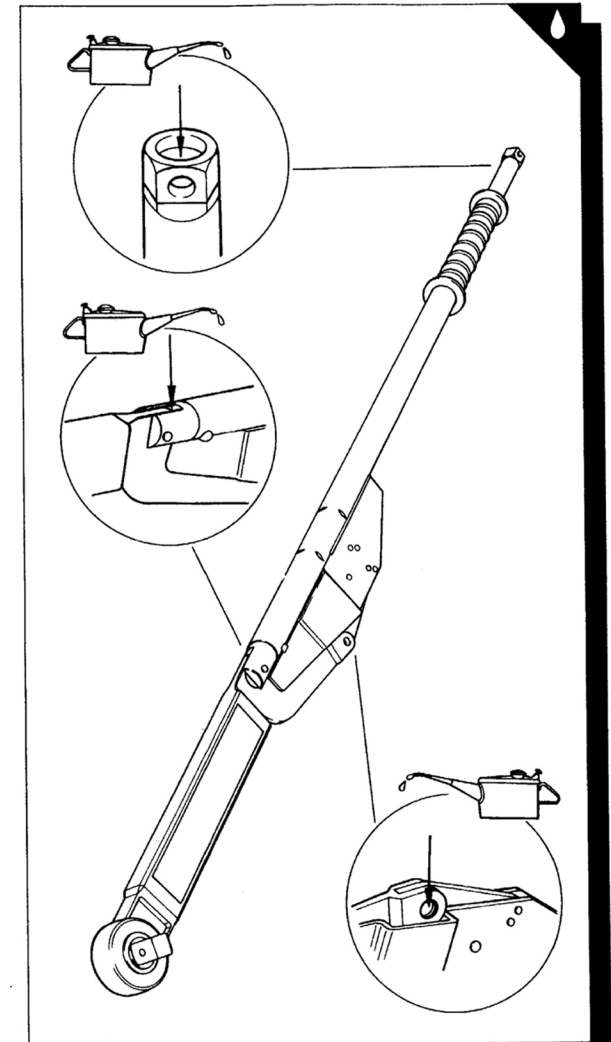
- Align required torque with the end of the body tube
- Alignez l'échelle de lecture avec l'extrémité du tube du corps pour le couple désiré
- Einstellen und Ablesen des Skalenwertes am Rohrkörperende
- Allineare la coppia necessaria con l'estremità del tubo del corpo
- Alinee el par de apriete requerido con el extremo del tubo del cuerpo



- Do not remove adjusting nut, calibration will be lost
- Ne pas retirer l'écrou de réglage. Sinon l'étalonnage sera perdu
- Skalenspindel nicht entfernen, da sonst die Kalibrierung ungenau wird
- Non levare il dado di regolazione, la taratura verrà persa
- No retire la tuerca de ajuste, se perdería la calibración



- Push from the centre of handle
- Appuyez au centre de la poignée
- Betätigung nur von der Handgriffmitte
- Spingere dal centro della maniglia
- Accionar desde el centro del mango



- Lubrication points
- Points de graissage
- Schmierstellen
- Punti di lubrificazione
- Puntos de lubricación

✓ = Yes X = No

✓ = Yes X = No

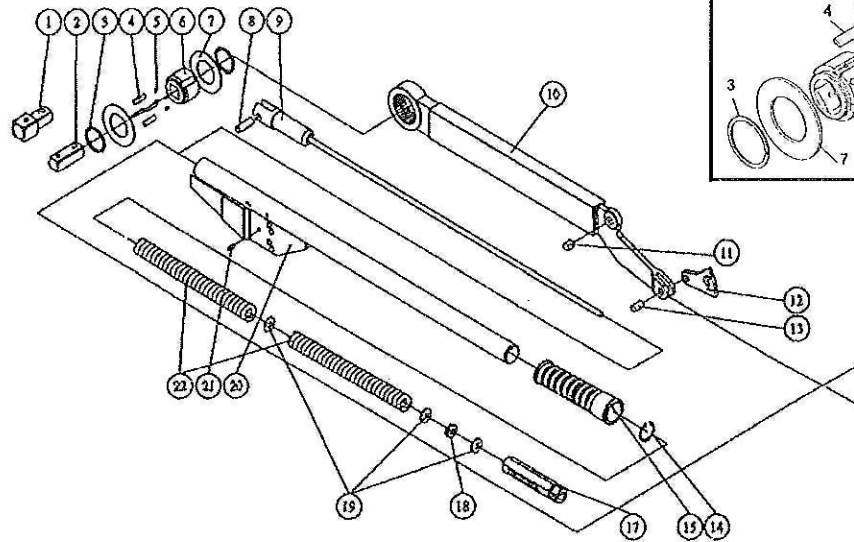


Part Number 10007

Part Number 10010

Break-Back Style

Hand Torque Wrench



ITEM#	DESCRIPTION	Quantity	Part No.
1	3/4"x1" drive	1	040059000019
2	3/4"x3/4" drive	1	040059000017
3	C-Ring	2	030010000058
4	Pawl	4	030106000019
5	Pawl Spring	4	030008000094
6	Driver	1	040030000083
7	Lid	2	030025000023
	head set		150350000059
8	Pluger Threads PIN	1	030022000063
9	Pluger Threads	1	040400000001
10	Ratchet Body Kit	1	040394000001
11	Bearing	1	030043000007
12	brake Pad	1	040411000001
13	brake Pad PIN	1	030022000066
14	G Buckle	1	030038000013
15	handle	1	030416000001
17	Adjusting Nut	1	040414000001
18	bushing	1	030413000001
19	washer	3	030025000024
20	Steel Tube Kit		040403000001
21	PIN		030022000065
22	Spring	2	030114000034
	Male/Male Extension Arm · 3/4"x 3/4"x13"	1	MC343413
	Male/Male Extension Arm · 3/4"x 1" x13"	1	MC44113

Equipment Supply Company

15270 Flight Path Drive

Brooksville, FL 34604

352-754-1117 • Fax 352-754-4508

www.esco.net • sales@esco.net

DISC WHEEL INSTALLATION PROCEDURE – RECOMMENDED MOUNTING TORQUE FOR DISC WHEELS

**TABLE 1
RECOMMENDED MOUNTING TORQUE FOR DISC WHEELS**

Mounting Type	Nut Thread	Torque Level Ft-Lb (Oiled*)
Hub-piloted with flange nut	1 1/16"-16 M20 X 1.5 M22 X 1.5	300-400 280-330 450-500
		Ft-Lb (Dry)
Stud-piloted, double cap nut Standard type (7/8" radius)	3/4"-16 1-1/8"-16	450-500 450-500
Stud-piloted, double cap nut Heavy duty type (1-3/16" radius)	15/16"-12 1-1/8"-16 1-5/16"-12	750-900 750-900 750-900
<p>* See "Disc Wheel Installation Procedure-Hub Piloted Disc Wheel System", Step 10</p> <p>Notes:</p> <ol style="list-style-type: none"> 1. If using specialty fasteners, consult the manufacturer for recommended torque levels. 2. Tightening wheel nuts to their specified torque is extremely important. Under tightening which results in loose wheels can damage wheels, studs and hubs and can result in wheel loss. Over tightening can damage studs, nuts and wheels and result in loose wheels as well. 3. Regardless of the torque method used, all torque wrenches, air wrenches and any other tools should be calibrated periodically to ensure the proper torque is applied. 		

RECOMMENDED MOUNTING TORQUE FOR DEMOUNTABLE RIMS

TABLE 2

Stud Size	Torque Level Ft. Lbs. (Dry)
5/8" - 11	160 - 200
3/4" - 10	200 - 260

WARNING: OSHA REGULATIONS REQUIRE THAT ALL WHEEL ATTACHING PARTS BE TORQUED TO MANUFACTURERS SPECIFICATIONS.



15270 Flight Path Drive, Brooksville Fl, 34604 Phone (352) 754-1117
Toll Free (800) 352-9852 Fax (352) 754-4508 www.esco.net