



METALTECH

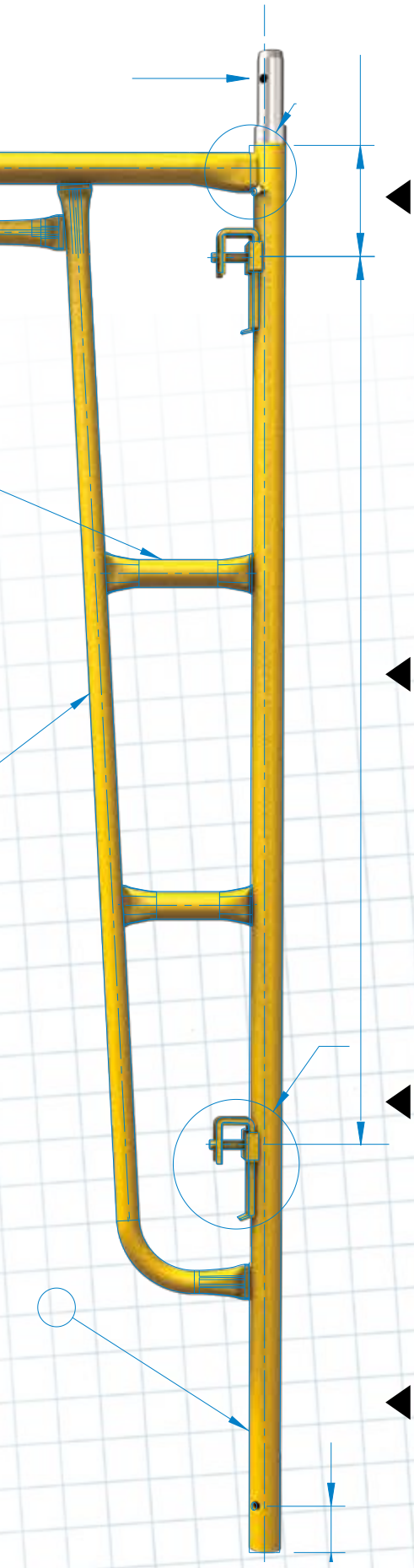
**EXTERIOR
SCAFFOLDING**

SAFERSTACK
A METALTECH INNOVATION

**BUILT TOUGH FOR
SAFETY**

**PROUDLY MADE IN
NORTH AMERICA**

MANUFACTURING OPTIONS



COUPLING PINS

CONNECT & SECURE YOUR COUPLING PIN TO ANY SCAFFOLD FRAME LEGS WITH OUR CHOICE OF SPRING-LOCK, CLEVIS OR ROLL PINS. ASK OUR CUSTOMER SERVICE FOR MORE DETAILS.



+



OR



OR



SPRING-LOCK

CLEVIS PIN

ROLL PIN

FRAME LOCKS*

METALTECH OFFERS A WIDE RANGE OF FRAME LOCKS TO MEET YOUR NEEDS. ORDER YOUR CHOICE THROUGH OUR CUSTOMER SERVICE FOR EITHER ONE OF OUR GRAVITY-LOCK, T-LOCK, F-LOCK, C-LOCK, U-LOCK, V-LOCK OR K-LOCK LOCKING SYSTEMS.



GRAVITY-LOCK



T-LOCK



F-LOCK



C-LOCK



U-LOCK



V-LOCK



K-LOCK

CUSTOM FRAMES*

WITH OUR 50 YEARS OF EXPERIENCE, SUPPORTED BY OUR MANUFACTURING FACILITY AND ENGINEERING TEAM, WE CAN MATCH YOUR NEEDS BY DEVELOPING CUSTOM FRAMES.

SPECIAL COLORS & HOT-DIP GALVANIZATION

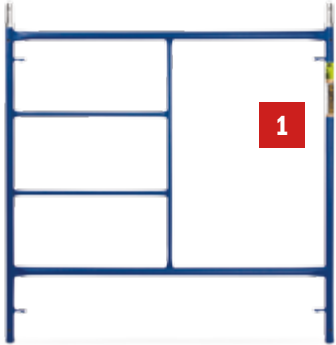
MOST SCAFFOLDING FRAMES WE MANUFACTURE ARE ALSO AVAILABLE WITH A HOT-DIP GALVANIZED FINISH, IN ORDER TO INCREASE THE LIFE SPAN. WE ALSO OFFER THE OPTION TO CHOOSE POWDER COATED FINISH COLORS* AND TEXTURES. PLEASE INQUIRE WITH CUSTOMER SERVICE FOR OUR COMPETITIVE RATES!

*MINIMUM ORDER QUANTITY APPLIES



FRAME SYSTEMS

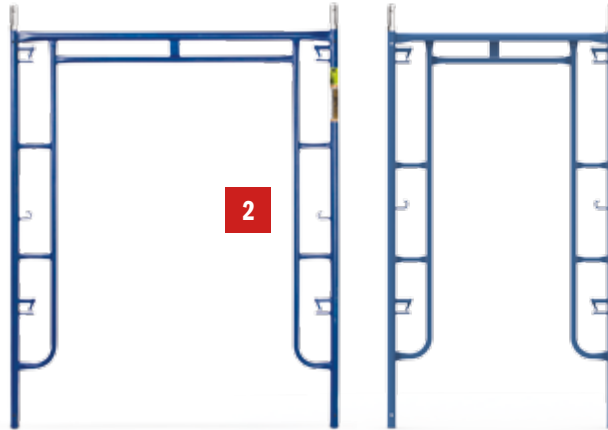
STANDARD



AVAILABLE DIMENSIONS:

| | | |
|-----------|----------------------------------|-----------|
| 36" X 60" | 48" X 60" | 60" X 60" |
| 72" X 60" | 76" X 60" | 60" X 48" |
| 60" X 30" | 60" X 36"/60" (ADJUSTABLE FRAME) | |

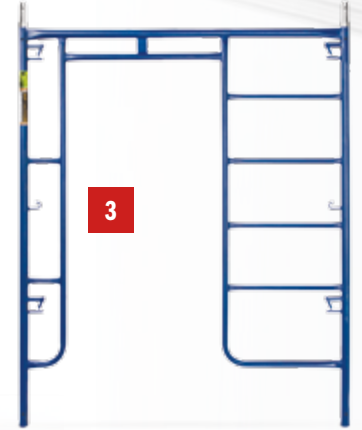
WALK-THRU ARCH



AVAILABLE DIMENSIONS:

| | | | | |
|-----------|-----------|------------|-----------|------------|
| 76" X 60" | 78" X 60" | 120" X 78" | 76" X 42" | 121" X 60" |
|-----------|-----------|------------|-----------|------------|

LADDER ARCH

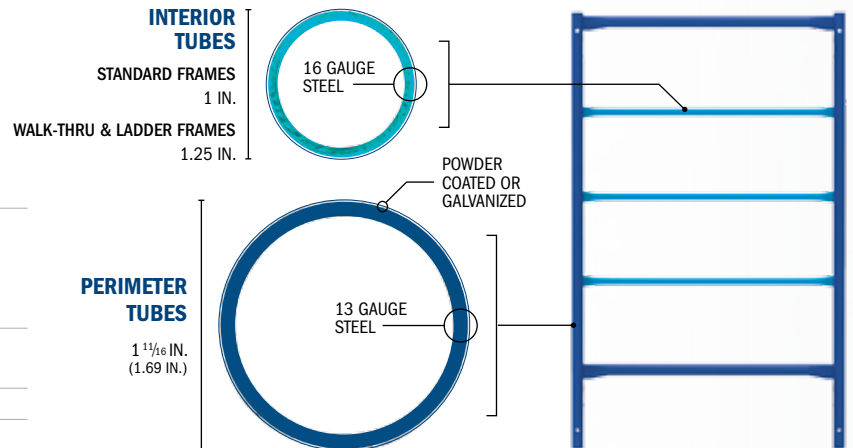


AVAILABLE DIMENSIONS:

| | |
|-----------|-----------|
| 76" X 60" | 78" X 60" |
|-----------|-----------|

GENERAL SPECIFICATIONS

| | |
|------------------------|--|
| INTERIOR TUBES | STANDARD FRAMES: OUTSIDE DIAMETER 1 IN. - 16 GAUGE WALK-THRU & LADDER FRAMES OUTSIDE DIAMETER 1.25 IN. - 16 GAUGE |
| PERIMETER TUBES | OUTSIDE DIAMETER 1.69 IN. - 13 GAUGE |
| FINISH | POWDER COATED OR GALVANIZED |
| STANDARDS | ANSI, OSHA AND CSA |



COMPATIBILITY

OUR FRAMES CAN BE MADE COMPATIBLE WITH BRANDS SUCH AS VANGUARD, BIL-JAX, WACO AND SAFWAY. CONTACT OUR CUSTOMER SERVICE FOR MORE INFORMATION.*



*ALL TRADEMARKS AND REGISTERED TRADEMARKS LISTED ABOVE ARE THE PROPERTY OF THEIR RESPECTIVE OWNERS.

BUILT TOUGH FOR SAFETY

SAFERSTACK
A METALTECH INNOVATION



ALL PRODUCTS MEET
ANSI OSHA CSA

MAIN COMPONENTS

GUARDRAIL & TOEBOARD



A GUARDRAIL POST AND GUARDRAIL



B GALVANIZED TOEBOARD

PLATFORM & SIDE BRACKET



C ALUMINUM PLATFORM WITH 5/8" PLYWOOD DECK



D SIDE BRACKET

COUPLING & BRACE



E COUPLING PIN



F PIG TAIL



H LOCK ARM



I GALVANIZED CROSS BRACE



J GALVANIZED DIAGONAL BRACE



G WALL ATTACHMENT

BASE & OUTRIGGER



K OUTRIGGER



L GALVANIZED LEVELING JACK



M 8 IN. CASTER



N 6 X 6 IN. BASE PLATE

COMPLEMENTARY COMPONENTS

WE OFFER A VARIETY OF COMPLEMENTARY COMPONENTS LIKE STAIRWAYS, PULLEY & HOIST, BRACKETS, WAGONS, ETC. CONTACT OUR CUSTOMER SERVICE FOR MORE INFORMATION OR VISIT OUR WEBSITE.



STAIRWAY & HANDRAIL



WAGON



SCAFFOLDING RACK



HOIST POST & PULLEY



DEBRIS NETTING



LEVELING JACK WITH U-HEAD



HEAVY DUTY 8 IN. CASTER



WALL BRACKET

SAFERSTACK® STACKS IN 30% LESS SPACE THAN REGULAR FRAMES

- SAFERSTACK® HELPS PREVENT STACKED FRAMES FROM SLIDING
- 100% COMPATIBLE WITH ANY STANDARD METALTECH® FRAME
- TESTED TO MEET ANSI, CSA AND OSHA STANDARDS



SAFERSTACK
A METALTECH INNOVATION

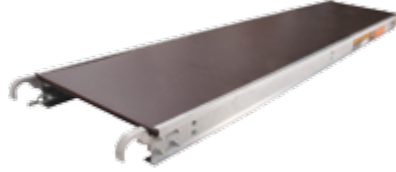
PLATFORMS

ALUMINUM PLATFORM WITH 5/8" PLYWOOD DECK



| DIMENSIONS | LOAD CAPACITY |
|----------------|-----------------------|
| 7 FT X 19 IN. | 75 LB/FT ² |
| 7 FT X 24 IN. | |
| 8 FT X 19 IN. | |
| 10 FT X 19 IN. | |
| 10 FT X 24 IN. | 50 LB/FT ² |

ALUMINUM PLATFORM WITH 5/8" ANTI-SLIP PLYWOOD DECK



| DIMENSIONS | LOAD CAPACITY |
|----------------|-----------------------|
| 7 FT X 19 IN. | 75 LB/FT ² |
| 7 FT X 24 IN. | |
| 10 FT X 19 IN. | |
| 10 FT X 24 IN. | |

ALUMINUM PLATFORM WITH EDGE CAPPING



| DIMENSIONS | LOAD CAPACITY |
|----------------|-----------------------|
| 7 FT X 19 IN. | 75 LB/FT ² |
| 10 FT X 19 IN. | |

ALL ALUMINUM PLATFORM



| DIMENSIONS | LOAD CAPACITY |
|----------------|-----------------------|
| 7 FT X 19 IN. | 75 LB/FT ² |
| 8 FT X 19 IN. | |
| 10 FT X 19 IN. | |

INNOVATIVE FEATURES

✓ CROSSBEAM*



- EVENLY SUPPORTS THE 5/8" THICK PLYWOOD AND PREVENTS IT FROM FLEXING
- GALVANIZED STEEL
- ERGONOMIC HANDLE CUT OUT FOR COMFORT AND EASY HANDLING

✓ EDGE CAPPING**



- PREVENTS EXTREMITY WEAR
- RE-INFORCES PLYWOOD DECK EXTREMITIES
- INCREASES THE PLYWOOD LIFESPAN
- CUSTOMIZE YOUR EDGE CAPPING WITH YOUR COMPANY NAME. (MINIMUM ORDER QUANTITY APPLIES)

✓ SIDE RAILS



- PROTECTS THE PLYWOOD EDGES TO PREVENTS WATER INFILTRATION, DELAMINATION AND PREMATURE WEAR

* STANDARD ON PLYWOOD PLATFORMS MODELS OF 19 IN. WIDE.
 ** ONLY AVAILABLE ON PLYWOOD PLATFORMS MODELS OF 19 IN. WIDE.



CUSTOMER SERVICE

T : **1 800 363-7587** (TOLL FREE NUMBER)
 F : **1 866 517-7585**
 @ : **CS@METALTECH.CO**

WWW.METALTECH.CO

FREE

GET THE METALTECH APP!

SCAFFOLDING CALCULATOR AND MORE!






Download on the
App Store



GET IT ON
Google Play

