

HOBART®

TM-260 273B

2013-02

Eff. w/Serial No. MC420249Y

Processes



MIG (GMAW) Welding



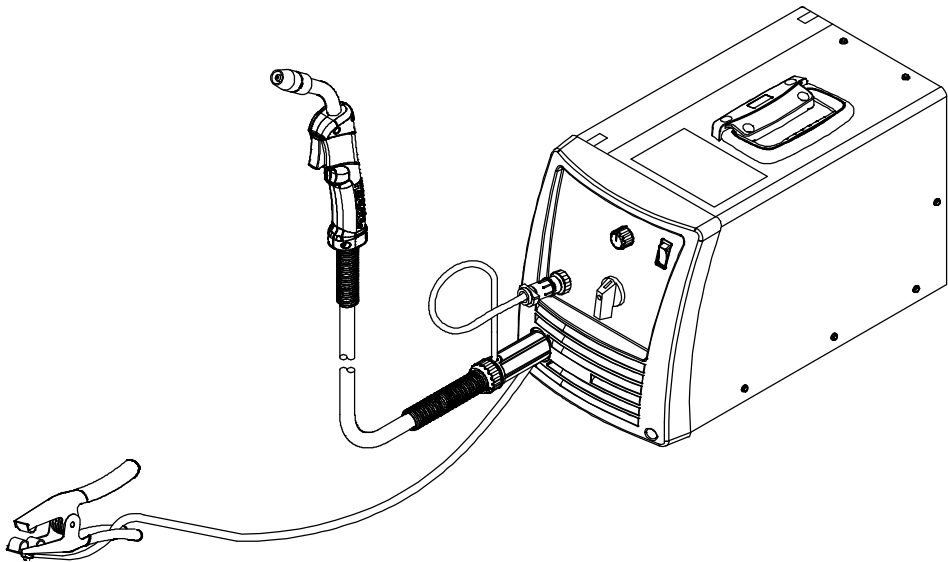
Flux Cored (FCAW) Welding

Description



Arc Welding Power Source And
Wire Feeder

Handler® 190 And H100S4-10 Gun



PARTS LIST


 Find us on
Facebook 

www.HobartWelders.com

File: MIG (GMAW)



SECTION 1 - PARTS LIST

 Hardware is common and not available unless listed.

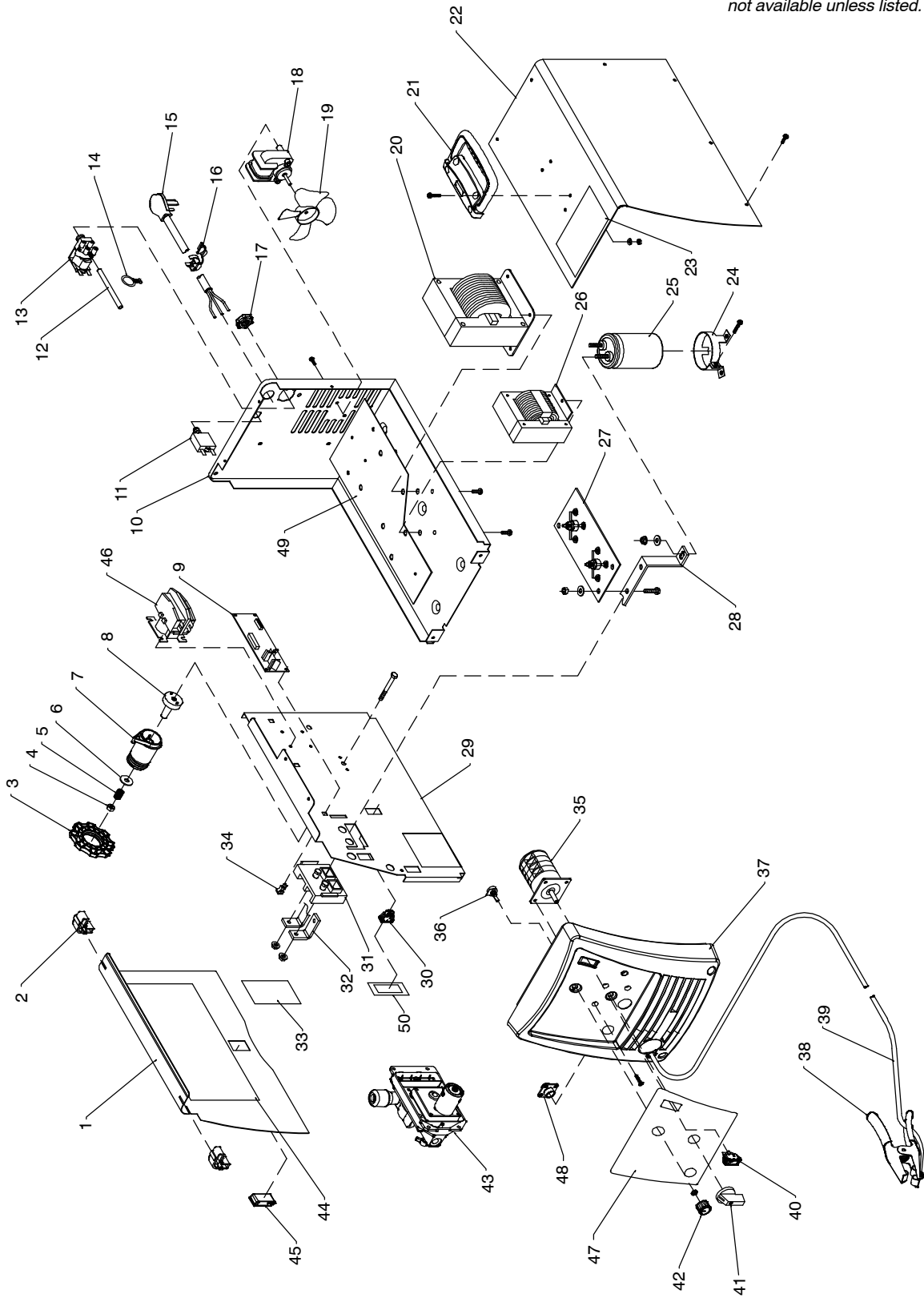


Figure 1-1. Main Assembly

258 438-A

Item No.	Dia. Mkgs.	Part No.	Description	Quantity
1		199 566	Door, Access	1
2		196 006	Hinge, Door	2
3		211 887	Hub, Nut	1
4		204 608	Nut	1
5		202 998	Spring, Cprsn	1
6		203 072	Washer, Flat	1
7		211 339	Hub, Spool	1
8		202 726	Adapter, Spool Hub	1
9	PC1	248 284	Circuit Card Assy, Control	1
10		195 999	Base, Lower	1
11	CB1	210 109	Supplementary Protector, 25 Amp	1
12		196 467	Tubing, PVC .187 ID x .312 OD x 23.00	1
13	GS1	216 398	Valve, Gas	1
14		197 198	Cable Tie, .700-.799 Bundle Dia	2
15		152 118	Cord Set, 250v 6-50p 12ga 3/C 7ft Spt-3 Jkt	1
16		111 443	Bushing, Strain Relief	1
17		137 761	Nut, Gas Valve	1
18	FM	196 064	Motor, Fan	1
19		409 953-001	Blade, Fan Cooling	1
20	T1	226 069	Transformer, Power Assy	1
21		208 015	Handle, Carrying	1
22		+196 005	Wrapper	1
23		204 036	Label, Warning	1
24		203 491	Clamp, Capacitor	1
25	C1	193 040	Capacitor, ElectrIt 100000uf	1
26	Z1	225 891	Reactor Assy	1
27	SR1	193 316	Rectifier Assy	1
28		193 193	Bus Bar (Positive)	1
29		+228 706	Baffle, Center	1
30	S3	196 575	Switch, Rocker	1
31	TE1	193 144	Insulator, Output Stud	1
32		193 194	Bus Bar (Negative)	1
33		216 830	Label, Warning	1
34		134 201	Stand-Off	4
35	S2	226 813	Switch, Rotary 32A 7 Position	1
36	R2	209 873	Potentiometer,	1
37		229 738	Panel, Front (Black)	1
38		257 796	Clamp, Work	1
39		196 619	Cable, Work	1
40	S1	196 574	Switch, Rocker Dpst	1
41		228 400	Knob, Pointer (Voltage)	1
42		211 338	Knob, Pointer (Wfs)	1
43	DM1	257 097	Wire Feed Assy	1

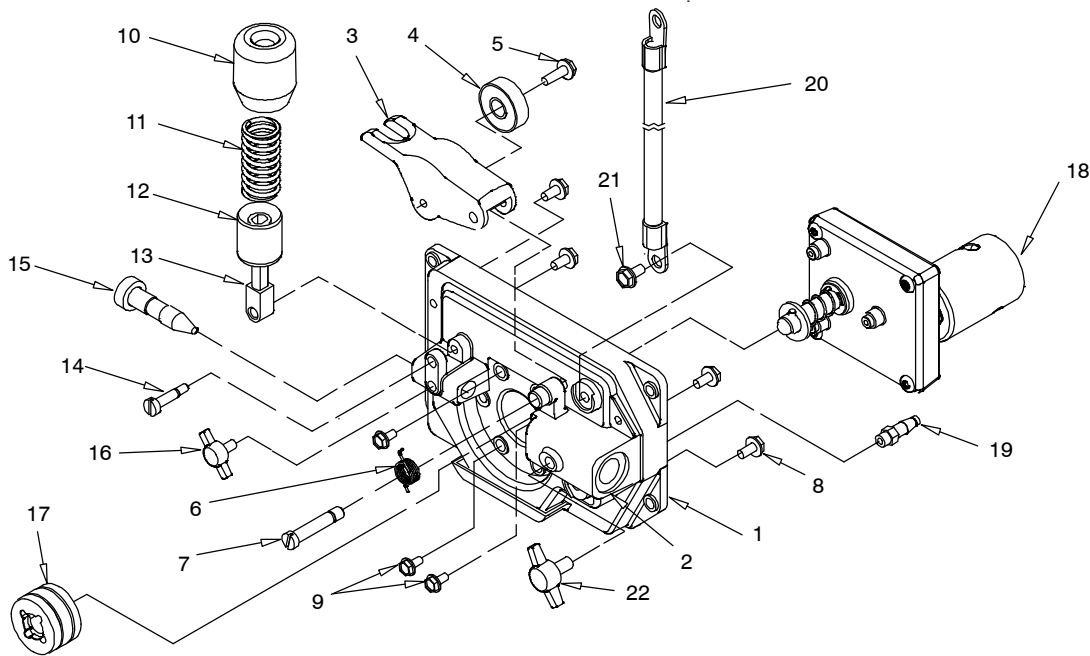
+When ordering a component originally displaying a precautionary label, the label should also be ordered.

To maintain the factory original performance of your equipment, use only Manufacturer's Suggested Replacement Parts. Model and serial number required when ordering parts from your local distributor.

Item No.	Dia. Mkgs.	Part No.	Description	Quantity
Figure 1-1. Main Assembly (Continued)				
... 44		248 827	.. Label, Weld Chart	1
... 45		204 711	.. Latch	1
... 46	CR3	217 585	.. Contactor	1
... 47			.. Label, Nameplate (Order By Model And Serial Number)	1
... 48		048 282	.. Rcpt W/Skts, (Service Kit)	1
... 49		228 643	.. Plate, Stiffener Base	1
... 50		229 794	.. Label, Spoolgun/Mig Gun	1
		221 037	.. Regulator/Flowmeter, 10-50 CFH Argon/CO ₂	1
		183 581	.. Hose, Assembly Gas	1

+When ordering a component originally displaying a precautionary label, the label should also be ordered.

To maintain the factory original performance of your equipment, use only Manufacturer's Suggested Replacement Parts. Model and serial number required when ordering parts from your local distributor.

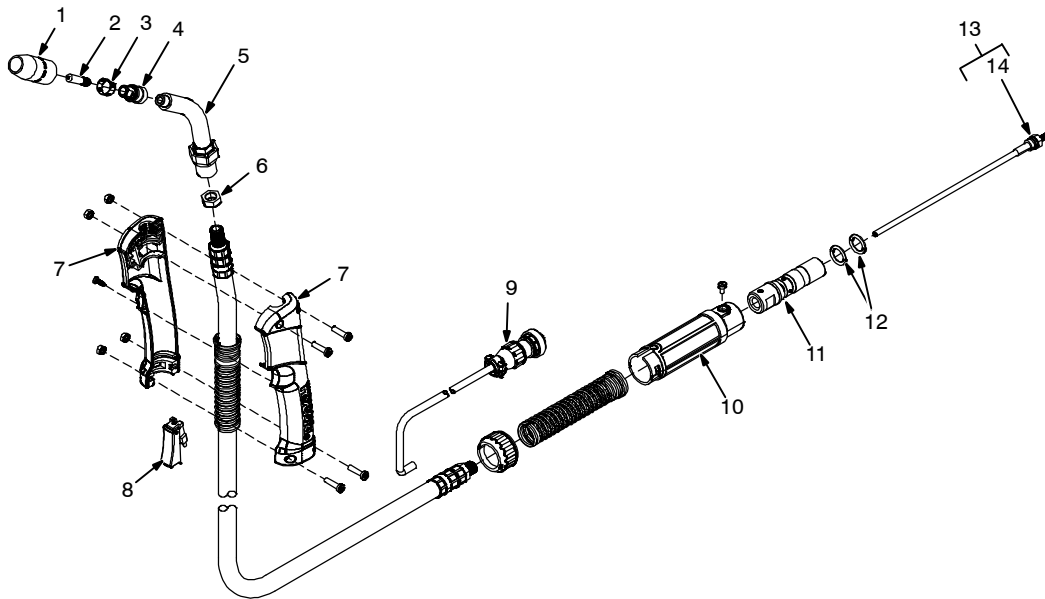


258 389-A

Figure 1-2. Wire Feed Drive Assembly

Item No.	Dia. Mkgs.	Part No.	Description	Quantity
258 389 Figure 1-2. Wire Feed Drive Assembly				
1		256 956	Cover, Motor Drive	1
2		257 420	Housing, Wire Drive	1
3		257 422	Lever,Mtg Pressure Gear	1
4		189 915	Bearing, Ball	1
5		176 869	Screw, 010-32 x 0.62	1
6		203 418	Spring, Torsion	1
7		257 790	Screw, .250-28 x .953 Shld	1
8		082 193	Screw, 010-32 x 0.37 hex hd	4
9		197 172	Screw, 006-32 x 0.37	3
10		196 895	Knob,Tension	1
11		234 200	Spring, Compression	1
12		196 896	Cup, Spring Tension	1
13		225 718	Fastener, Pinned	1
14		257 792	Screw, Shld Stl 10-32 x .60	1
15		256 960	Guide, Inlet .023-.052	1
16		257 865	Knob,T 1.00 Bar W/10-32 x .375	1
17		246 565	Roll, Drive V/VK Groove .030-.035	1
18		217 778	Motor, Gear	1
19		230 012	Fitting, Gas	1
20		196 109	Cable	1
21		602 154	Screw, .250-20 x .50	1
22		257 864	Knob, T 1.265 Bar w/.250-20 Stud .625 Lg Plstc	1

To maintain the factory original performance of your equipment, use only Manufacturer's Suggested Replacement Parts. Model and serial number required when ordering parts from your local distributor.



243 842-A

Figure 1-3. H100S4-10 Gun

Item No.	Dia. Mkgs.	Part No.	Description	Quantity
245 926 Figure 1-3. H100S4-10 Gun				
...	1	169 715	.. Nozzle, Slip Type .500 Orf Flush	1
...	1	+226 190	.. Nozzle, Flux Cored Slip Type	1
...	2	+087 299	.. Tip, Contact Scr .023 Wire X 1.125	1
...	2	+000 067	.. Tip, Contact Scr .030 Wire X 1.125	1
...	2	+000 068	.. Tip, Contact Scr .035 Wire X 1.125	1
...	2	+000 069	.. Tip, Contact Scr .045 Wire X 1.125	1
...	3	170 470	.. Ring, Retaining	1
...	4	169 716	.. Adapter, Contact Tip	1
...	5	246 373	.. Tube, Head	1
...	6	243 865	.. Nut, Jam	1
...	7	242 832	.. Handle	1
...	8	225 410	.. Switch, Trigger	1
...	9	079 878	.. Housing Plug & Pins	1
...	10	246 380	.. Housing, Power Pin	1
...	11	245 927	.. Connector, Feeder	1
...	12	197 123	.. O-Ring, .312 ID X .062 70 Duro Buna-n	2
...	13	+194 010	.. Liner, Monocoil .023/.025 Wire x 15ft (Consisting Of)	1
...	13	+194 011	.. Liner, Monocoil .030/.035 Wire x 15ft (Consisting Of)	1
...	13	+194 012	.. Liner, Monocoil .035/.045 Wire x 15ft (Consisting Of)	1
...	14	079 975	.. O-Ring, .187 ID x .103Cs Rbr	1

+OPTIONAL

To maintain the factory original performance of your equipment, use only Manufacturer's Suggested Replacement Parts. Model is required when ordering parts from your local distributor.

1-4. Optional Drive Rolls

For All Feed Head Assemblies	
PART NO.	WIRE DIAMETER INCHES (mm)
237 338	.023/.025 (.6) and .030/.035 (.8 and .9)
202 926	.030/.035 (.8 and .9) and .045 (1.2 VK Groove)
246 565	.030/.035 (.8 and .9) V/VK Grooves

1-5. Options

PART NO.	DESCRIPTION	REMARKS
770 187	Running Gear/Cylinder Rack	For One Small Gas Cylinder, 100 lb (45 kg) max.
194 776	Small Running Gear/Cylinder Rack	For One Small Gas Cylinder, 75 lb (34 kg) max.
245 926	H100S4-10 Replacement Gun	10 ft length/.030-.035 wire size
300 796	SpoolRunner 100 Spool Gun	For push/pull wire feeding
195 186	Protective Cover	Weatherproof nylon
212 492	Regulator/Flowmeter	For use with CO ₂ shielding gas, 10-50 CFH
144 108	Gas hose, 5 ft	For use with regulator/flowmeter 212 492

1-6. Consumables

ITEM	HOBART PACKAGE NO.*	MILLER PACKAGE NO.**
Contact Tips		
.023/.025 in (0.6 mm)	770 174 (5 per package)	087 299 (10 per package)
.030 in (0.8 mm)	770 177 (5 per package)	000 067 (10 per package)
.035 in (0.9 mm)	770 180 (5 per package)	000 068 (10 per package)
.045 in (1.2 mm)	770 183 (5 per package)	000 069 (10 per package)
MIG Nozzle (Standard)		
	770 404	169 715
Gasless Flux Cored Nozzle		
	770 487	226 190
Tip Adapter		
	770 402	169 716
Replacement Liners		
.023/.025 in (0.6 mm)	196 139	194 010
.030/.035 in (0.8/0.9 mm)	196 139	194 011
.035/.045 in (0.9/1.2 mm)	196 140	194 012
*Available at farm and tool supply retailers.		
**Available at Hobart/Miller welding distributors.		

Hobart Brothers Co.
An Illinois Tool Works Company
600 West Main Street
Troy, OH 45373 USA

For Assistance:
Call 1-800-332-3281

HOBART®