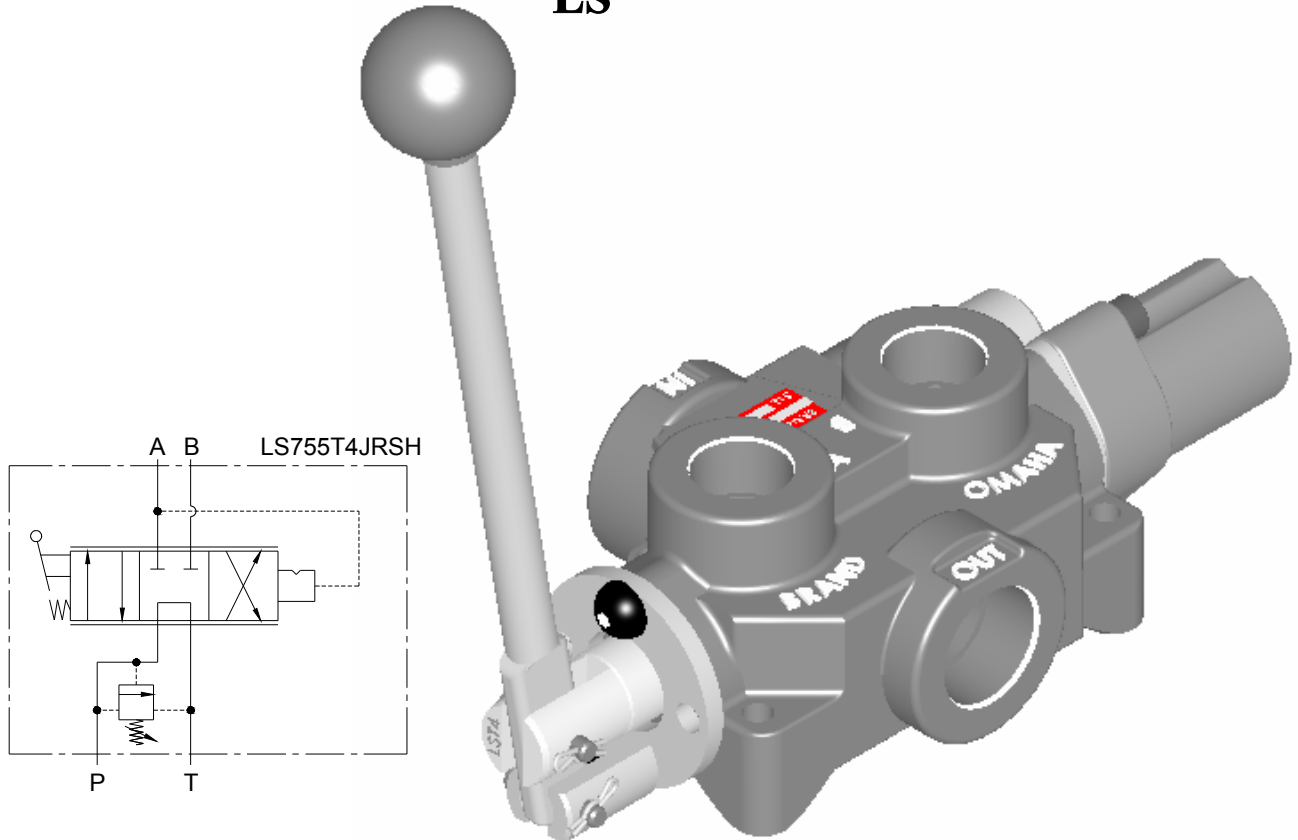


4 – WAY DIRECTIONAL CONTROL VALVE WITH HYDRAULIC KICK OUT “LS”



FEATURES:

- **STANDARD SINGLE HYDRAULIC KICK OUT** with non-adjustable kick-out.
- **OPTIONAL SINGLE HYDRAULIC KICK OUT** with adjustable kick-out.
- **OPTIONAL DOUBLE HYDRAULIC KICK OUT** is not recommended for log splitters.
- **SMALL AND COMPACT** to fit your design requirements.
- **FINE POSITIVE METERING** in either direction with the manually adjustable handle.
- **PRECISION GROUND IOSSO PLATED SPOOL** that assures long life.

SPECIFICATIONS:

- **Rated 0-18 gpm (0-68.1 lpm).**
- **Rated for 3000 psi (207 bar).**
- **Weights 5-1/2 lbs. (2.5 kg).**
- **30 – Micron filtration recommended.**
- **Standard port sizes.**
 - **Inlet/Outlet 3/4” NPT and work ports**
 - **1/2” NPT**

MATERIALS:

- **Cast Iron Body**
- **Buna N O’Rings**
- **IOSSO Plated Steel Spool**
- **Black Nylon Ball Knob**

LS – GENERAL INFORMATION:

The Brand, LS 4-way directional control valve is designed primarily for log splitters. The manual adjustable handle provides fine metering to either port. Port flow is directly proportional to the movement of the lever. The tank port must be plumbed directly back to tank.

SPOOL TYPE – The spool types we offer are tandem center 4-way (T4), open center 4-way (O4) and closed center 4-way (C4). (See chart and schematics for more information on spool types).

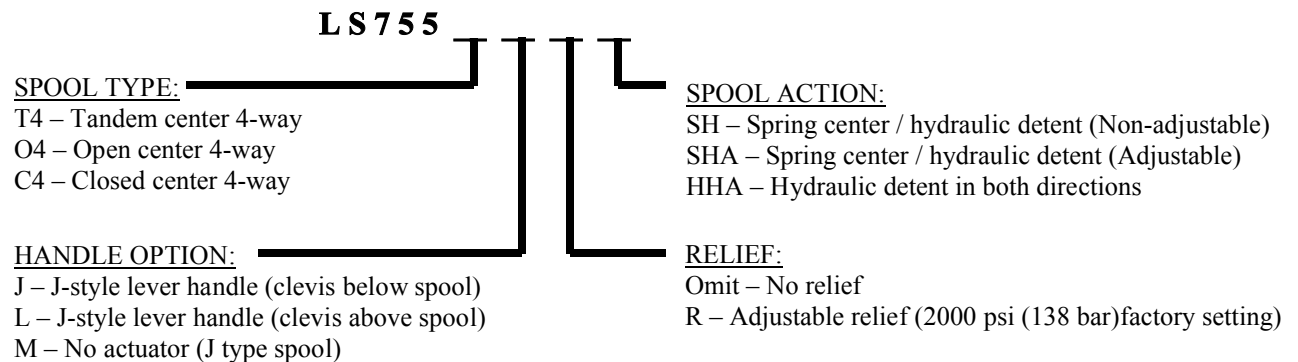
HANDLE OPTION – Lever handle (J) pressurizes A port when the handle is pushed towards the valve body (clevis below spool). Lever handle (L) pressurizes A port when the handle is pulled away from valve body (clevis above spool). No actuator (M) J type spool.

ATTACHMENTS – Spring center hydraulic detent (SH) springs back to neutral from one position and pressure release detent in the other direction when the cylinder completes its return stroke (P to A in detent and 800-1000 psi (55 to 69 bar) kick-out). Spring center hydraulic detent (SHA) springs back to neutral from one position and pressure release detent in the other direction with adjustable kick-out (P to A in detent and 800 psi kick-out setting). Hydraulic detent in both directions (HHA) pressure release detent in both directions and springs to center when out of detent (Not recommended for log splitters). Adjustable relief (R) set to 2000 psi (138 bar) at factory.

LS – EXAMPLES OF COMMON MODEL CODES:

- LS755C4JRSH** 3/4" NPT inlet/outlet, 1/2" NPT work ports, closed center 4-way spool, J-style actuator, adjustable relief set at 2000 psi (138 bar), and spring center one direction hydraulic detent in other direction with non-adjustable kick-out.
- LS755C4JRSHA** 3/4" NPT inlet/outlet, 1/2" NPT work ports, closed center 4-way spool, J-style actuator, adjustable relief set at 2000 psi (138 bar), and spring center one direction hydraulic detent in other direction with adjustable kick-out.
- LS755T4JRHHA** 3/4" NPT inlet/outlet, 1/2" NPT work ports, tandem center 4-way spool, J-style actuator, adjustable relief set at 2000 psi (138 bar), and hydraulic detent in both directions.

LS – CREATING A MODEL CODE FOR LS'S:

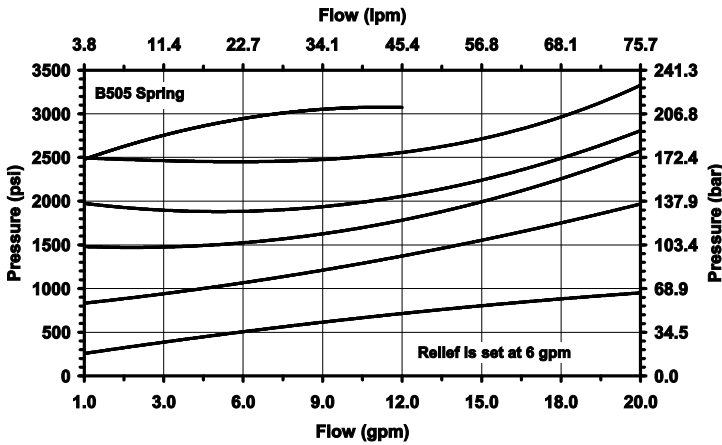


LS – COMPLETE LIST OF OPTIONS AND ACCESSORIES:

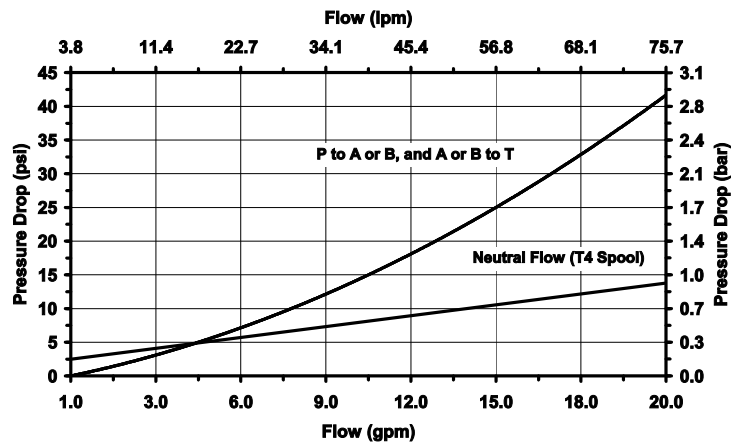
- LSJRHH-K** Seal kit for LS with HHA spool action.
- LSJRSH-K** Seal kit for LS with SHA spool action.
- LSJRS-K** Seal kit for LS with SH spool action.
- LS-RK** Kick-out assembly with spool for SH spool action.

LS – FLOW AND PRESSURE INFO:

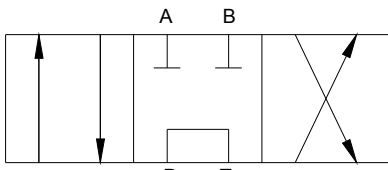
Pressure vs. Flow for LS Relief (R)



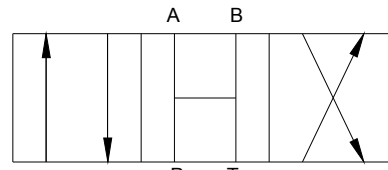
Pressure Drop vs. Flow



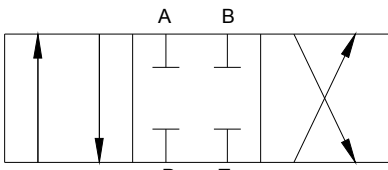
SPOOL SCHEMATICS:



Tandem Center 4-way (T4) - Powers cylinder or motor in both directions. Pump unloads to tank when spool is in neutral. Cylinder or motor blocked when spool in neutral.



Open Center 4-way (O4) - All of the ports are connected to tank when the spool is in neutral. Allows cylinder to move or motor to rotate when spool is in neutral.



Closed Center 4-way (C4) - All ports are blocked in neutral. Blocks cylinder or motor in neutral. Required for use with pressure compensated pump.

DIMENSIONAL DATA (LS755T4JRSH SHOWN): inches & [millimeters]

ADJUSTABLE RELIEF (2000 PSI (138 BAR) FACTORY SETTING)

