

Electric Meat Grinder (#168632)

Assembly and Operation Instructions

For technical questions and replacement parts, please call 1-800-556-7885.

Thank you very much for choosing a NORTHERN TOOL & EQUIPMENT CO., Product! For future reference, please complete the owner's record below:

Model: _____ Purchase Date: _____

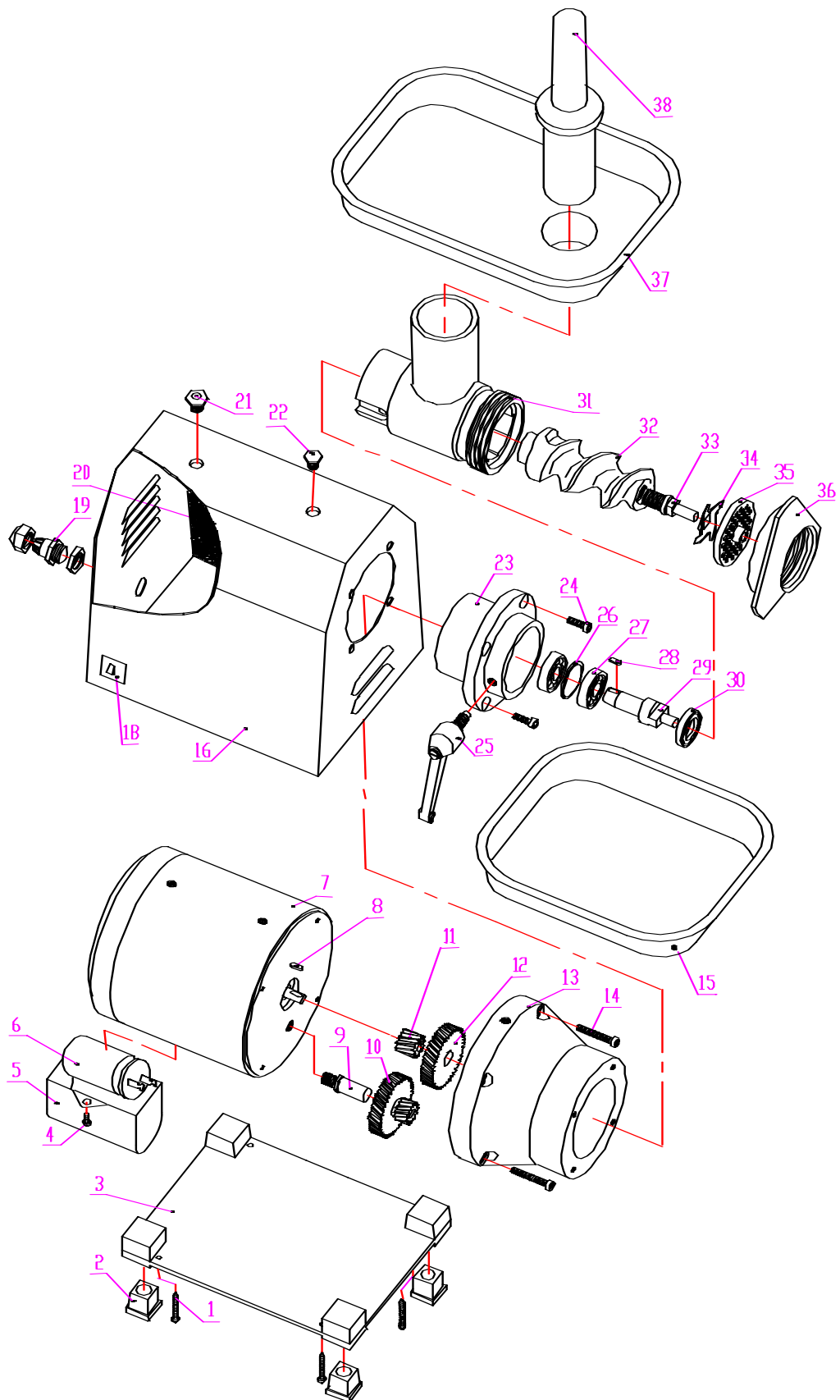
Save the receipt, warranty and these instructions. It is important that you read the Entire instruction sheet to become familiar with this product before you begin using it.



1. Operation and Maintenance

- 1) Before Use, Check that the power supply corresponds to the required by the machine, and that the external earthing wire is reliable connected.
- 2) Take off the head from the machine, wash the parts dismantled with clean water, then re-assemble them as directed in figure.
- 3) Before mincing, first turn lock-handle counter-clockwise, tighten the front nut but not too tight, or it will damage the motor and the blade.
- 4) Remove sin and bone from the meat to be minced, cut them into smaller pieces.
- 5) Feed the pieces into mincing chamber with feed-stick supplied. Never use hands instead.
- 6) Disassemble the head, and wash it with clean water immediately after each use, as to a avoid bacteria growth.
- 7) If the minced meat is not discharged smoothly or in the form of paste, the causes and remedies could be:
 - a) Front nut is tighten too much thus, the mincing blade does not contact properly with discharge plate. Rea-adjust it
 - b) The discharge plate is blocked. Clean it.
 - c) Blade edges is dull. Grind or replace it.

2. Diagram for #12 Electric Meat Grinder:



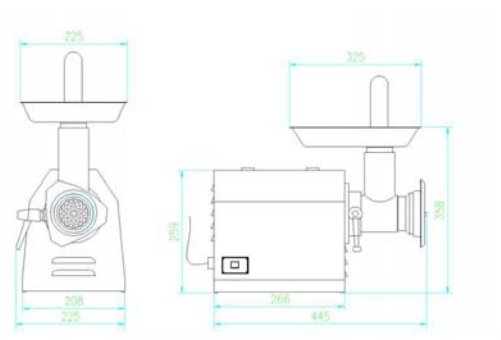
3. Parts List

Parts #	Name of Part	Q'ty
1	Screw(M5x32)	6
2	Stabilizer	4
3	Turning over Board	1
4	Screw (M4x8)	1
5	Capacitor Support	1
6	Capacitor (20uF, 450V)	1
7	Motor	1
8	Key(4x12)	1
9	Shaft	1
10	Dual Gear(II:41T III:18T)	1
11	Gear I (13T)	1
12	Gear IV(40T)	1
13	Gearbox - Case	1
14	Screw(M6x40)	4
15	Discharge Pan	1
16	Case	1
18	Combine Switch	1
19	Cable Clips	1
20	Sponge Pad	2

Parts #	Name of Part	Q'ty
21	Motor locking screw	1
22	Oil stopper	1
23	Linking seat	1
24	Screw(M6x20)	4
25	Latch	1
26	Retainer ring	1
27	Ball bearing-#60203	2
28	Key(5x10)	1
29	Shaft	1
30	Seal-Oil (B25x40x7)	1
31	Mincer head	1
32	Feed Screw	1
33	Arbor	1
34	Meat Cutter	1
35	Discharge Plate	1
36	Hand wheel	1
37	Feed pan	1
38	Feed stick	1

4. Technical Specifications

Voltage	110/120/230/240V
Power	650W
Cycle	50/60Hz
Plate Size	6, 8mm
Capacity	120kg/260lb per hour
Net Weight	25kg/55lb



5. Circuit Diagrams

