



HEAVY-DUTY WELDING CART

USER'S MANUAL



 **WARNING:**

Read carefully and understand **RULES FOR SAFE OPERATION** and instructions before operating. Failure to follow the safety rules and other basic safety precautions may result in serious personal injury.

Item # 164775

For technical questions and replacement parts, please call 1-800-222-5381.

Thank you very much for choosing a NORTHERN TOOL + EQUIPMENT CO., INC., Product! For future reference, please complete the owner's record below:

Model: _____ Purchase Date: _____

Save the receipt, warranty and these instructions. It is important that you read the entire manual to become familiar with this product before you begin using it.

This machine is designed for certain applications only. Northern Tool + Equipment strongly recommends this machine is not modified and/or used for any application other than that for which it was designed. If you have any questions relative to a particular application, DO NOT use the machine until you have first contacted Northern Tool + Equipment to determine if it can or should be performed on the product.

Features and Technical Specifications:


Overall dimensions: 39" x 20" x 39"


Max. tank diameter: 7-1/2"

Max. loading capacity: 200 LBS.

Fastening chain length: 32" x 2 pcs.

Wheels: 6" swivel front casters, 10" rigid rear casters

 **WARNING:** The warnings, cautions, and instructions discussed in this instruction manual cannot cover all possible conditions or situations that could occur. It must be understood by the operator that common sense and caution are factors which cannot be built into this product, but must be supplied by the operator.

 **WARNING:** Do not load the Welding Cart over 200 LBS.

Do not allow children to use the cart unsupervised. This cart is not a toy!

SAVE THESE INSTRUCTIONS

WORK AREA

- **Keep work area clean**, free of clutter and well lit. Cluttered and dark work areas can cause accidents.
- **Do not use your tool where there is a risk of causing a fire or an explosion;** e.g. in the presence of flammable liquids, gasses, or dust. Power tools create sparks, which may ignite the dust or fumes.
- **Keep children and bystanders** away while operating a power tool. Distractions can cause you to lose control, so visitors should remain at a safe distance from the work area.
- **Be aware of all power lines, electrical circuits**, water pipes and other mechanical hazards in your work area, particularly those hazards below the work surface hidden from the operator's view that may be unintentionally contacted and may cause personal harm or property damage.

- **Be alert of your surroundings.** Using tools in confined work areas may put you dangerously close to cutting tools and rotating parts.
- **Operate** and store the Cart on a flat, dry, level surface.
- **Do not** allow children to use the cart unsupervised. This cart is not a toy!
- **Load cannot** exceed 200 lbs.

ASSEMBLY

Tools Required: Adjustable wrench, slot screwdriver, pliers

1. Use the M6*40 bolts (#13), ϕ 6 washers (#14) and M6 nuts (#15) to attached the lower tool tray (#2) to the bottom holes on the handle (#5).
2. Attach the upper tool tray (#1) to the middle holes on the handle (#5) with M6*40 bolts (#13), ϕ 6 washers (#14) and M6 nuts (#15).
3. Attach the upper tool tray (#1) to the lower tool tray (#2) with M6*15 bolts (#16).
4. Attach tank seat (#4) to upper tool tray (#1) with the M6*15 bolts (#16).
5. Put the axel (#9) through the bottom holes of the upper tool tray (#1) and the tank seat (#4).
6. Slide one 10 in. front wheel (#8) onto one side of the axel (#9), and attach with ϕ 16 washers (#17) and ϕ 2.5*30 Pin (#18). Repeat on the other side.
7. Slide the 6 in. rear casters (#10) into the holes on the bottom of the handle (#5).
8. Attach the hardware box (#6) to the top of the upper tool tray (#1) with M6*15 bolts (#16).
9. Insert tank plate (#3) into the holes of the upper tool tray (#1), then tip over the whole cart. Use pliers to bend the 4 feet (See fig. 1) onto the upper tool tray to attach the tank plate (#3).
10. Attached big pothook (#11) and small pothook (#12) to handle (#5) with M6*40 bolts (#13), ϕ 6 washers (#14) and M6 nuts (#15).
11. Insert the chains (#7) through the holes on top of the tank plate (#3) and tank seat (#4).
12. Check to make sure every bolt and nut has been tightened.

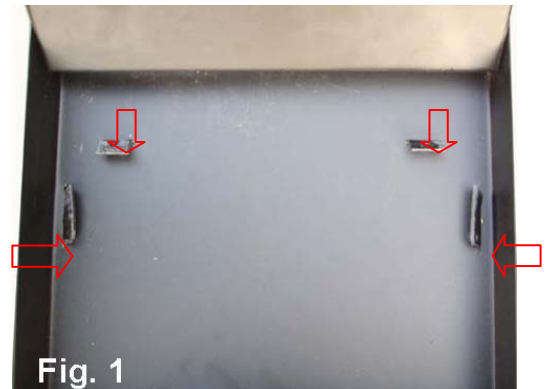


Fig. 1

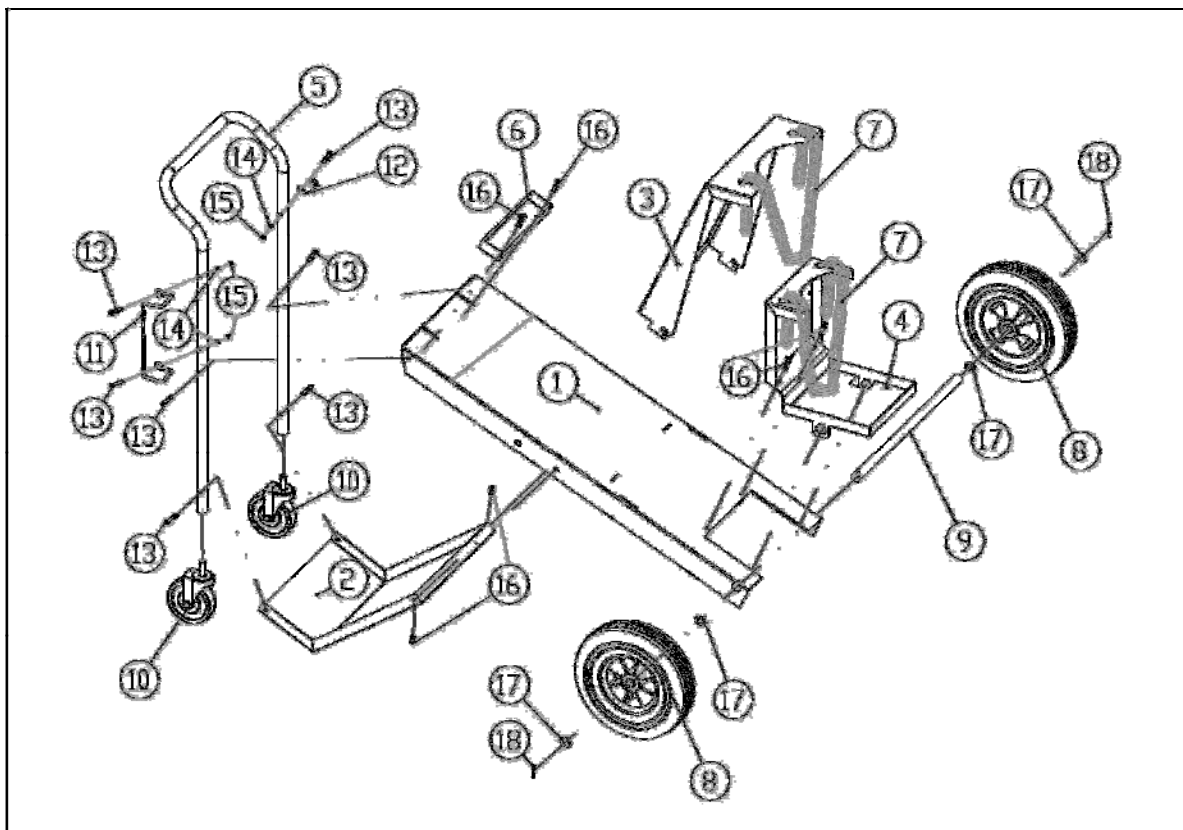
MAINTENANCE

- Maintain your cart. It is recommended that the general condition the cart be examined before it is used. Keep cart in good repair by adopting a program of conscientious repair and maintenance in accordance with the recommended procedures found in this manual. If any damage or wear is noted, have the problem corrected before further use. Have necessary repairs made by qualified service personnel.
- When not in use or during transportation, keep the product out of direct sunlight and away from chemicals and abrasive substances.

- The product should be cleaned with a dry and soft cloth. Many household cleaners can weaken the materials.

PARTS LIST & EXPLODED DIAGRAM:

Part#	Description	Qty.	Part#	Description	Qty.
1	Upper Tool Tray	1	10	6" Rear Caster	2
2	Lower Tool Tray	1	11	Big Pothook	1
3	Tank Plate	1	12	Small Pothook	1
4	Tank Seat	1	13	M6*40 Bolt	7
5	Handle	1	14	φ6 Washer	2
6	Hardware Box	1	15	M6 Nut	2
7	Chain	2	16	M6*15 Bolt	6
8	10" Front Wheel	2	17	φ16 Washer	4
9	Axel	1	18	φ2.5*30 Pin	2



WARNING

Some dust created by power sanding, sawing, grinding, drilling, and other construction activities contains chemicals known to the State of California to cause cancer, birth defects or other reproductive harm.

Some examples of these chemicals are:

- lead from lead-based paints,
- crystalline silica from bricks and cement and other masonry products, and
- arsenic and chromium from chemically-treated lumber.

Your risk from these exposures varies, depending on how often you do this type of work. To reduce your exposure to these chemicals: work in a well ventilated area, and work with approved safety equipment, such as those dust masks that are specially designed to filter out microscopic particles.



Northern Tool + Equipment Co.,
2800 Southcross Drive West
P.O. Box 1499 Burnsville, MN 5337-0499
Made in China