



A Regal Brand

Northern Tool

Catalog # : 100003.00

Product Type: AC MOTOR

Description: 3/4HP..1725RPM.56.DP.115/208-230V.1PH.60HZ.CONT.AUTOMATIC.40C.1.25SF.RIGID.GENERAL PURPOSE.A4C17DH4H

Model: A4C17DH4 H

Stock: Stock

Quote: Price:

Date: 05/01/2014



A Regal Brand

Northern Tool

Catalog # : 100003.00

Model: A4C17DH4 H

Product Type: AC MOTOR

Stock: Stock

Description: 3/4HP..1725RPM.56.DP.115/208-230V.1PH.60HZ.CONT.AUTOMATIC.40C.1.25SF.RIGID.GENERAL PURPOSE.A4C17DH4H

Engineering Data

Volts	115	Volts	208-230	Volts	
F.L. Amps	10.8	F.L. Amps	5.3-5.4	F.L. Amps	
S. F Amps	12.4	S. F Amps	6.1-6.2	S. F Amps	

RPM	1800	Hertz	60	TYPE	CD
HP	3/4	Duty	CONTINUOUS	Phase	1
KW	0.56	Serv. Factor	1.25	Code	K
Frame	S56	Design	N	Therm.Prot.	CEJ53CV
Max Amb	40	Protection	AUTOMATIC	PF	64
Insul Class	B	Eff 75%		Bearing OPE	6203
Eff 100%	70	CSA	Yes	Bearing PE	6203
UL	Y-(LEESON UL REC)	CE		Speed Range	NONE
CC Number		Inverter Type			
Load Type					

Motor Wt.	28 LB	Enclosure	DP	Lubrication	STANDARD
Nameplate	A-92005-6	Mounting	RIGID	Rotation	SELECTIVE CCW
Assembly	LO100003	Shaft Dia.	5/8 IN	Ext. Diag.	005003.52
Cust Part No		Outline	031640-700	Ext. Diag2	
Packaging	B	Outline Dash No		Winding	CE484207
Carton Label	Leeson Gen Purpose	Paint	LEESON BLUE	GROUP :	3
Iris				Test Card	

Form Factor		RMS Amps		Const TorqueSpeed Range	
Torque		Peak			
AB Code		Peak@DegC			
Resistance					
Connection					

Rework Status	Rework TYPE
---------------	-------------

Hazardous Loc
Explosion Proof
Class
Class

NONE

Temp Op Code
GROUP
GROUP

Brake Motors
FORCE
VDC
ADC

Brake Coil OHMs @25 C

Performance								
Torque UOM		OZ-FT	Inertia (WK ²)		-1 LB-FT ²			
Torque			83.6(Break Down)		82.4(Pull Up)		114(Locked Rotor)	
CURRENT (amps)			0(Break Down)		0(Pull Up)		27.3(Locked Rotor)	
Efficiency (%)			67.3(75% Load)		61.3(50% Load)		47.2(25% Load)	
PowerFactor			56.4(75% Load)		45.3(50% Load)		31.8(25% Load)	
Load Curve Data @60 HzVolts,3/4Horsepower								
Load	Amps	KW	RPM	Torque	Eff	PF	Rise By Resis	Frame Rise
0.0	4.15	0.158	1797	0.0	0.0	16.5	0.0	-
0.25	4.16	0.304	1785	9.0	47.2	31.8	0.0	-
0.5	4.42	0.462	1773	18.0	61.3	45.3	0.0	-
0.75	4.84	0.628	1760	27.0	67.3	56.4	0.0	-
1.0	5.43	0.81	1745	36.0	68.8	64.7	62.2	-
1.25	6.17	1.03	1727	45.0	67.1	72.4	0.0	-
1.5	7.1	1.218	1705	54.0	67.1	74.5	0.0	-

SOURCE: CALCULATED GROUP: 3

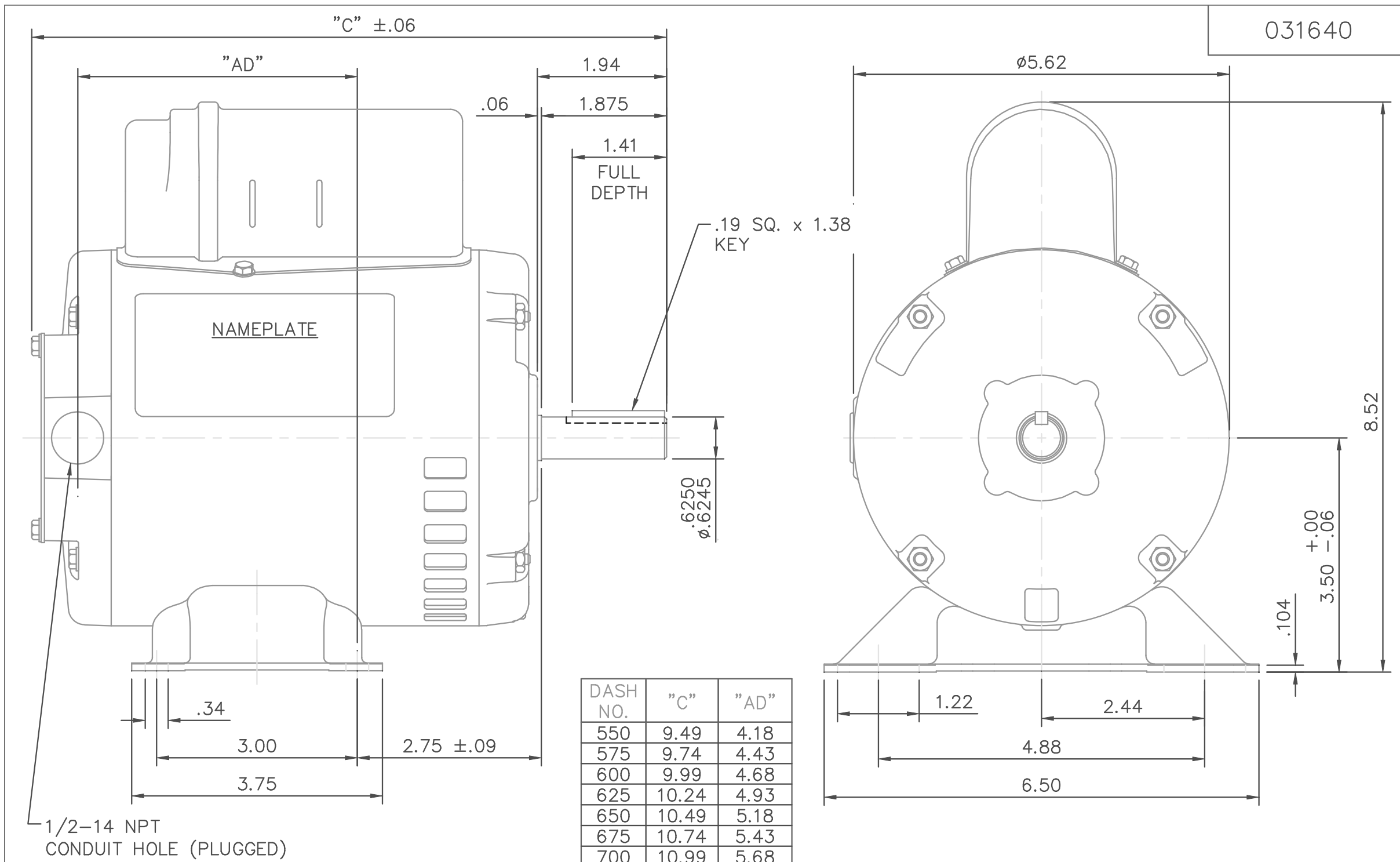
Load Curve Data @60HzVolts,3/4Horsepower

Load	Amps	KW	RPM	Torque	Eff	PF	Rise By Resis	Frame Rise
------	------	----	-----	--------	-----	----	---------------	------------

Load Curve Data Not Available

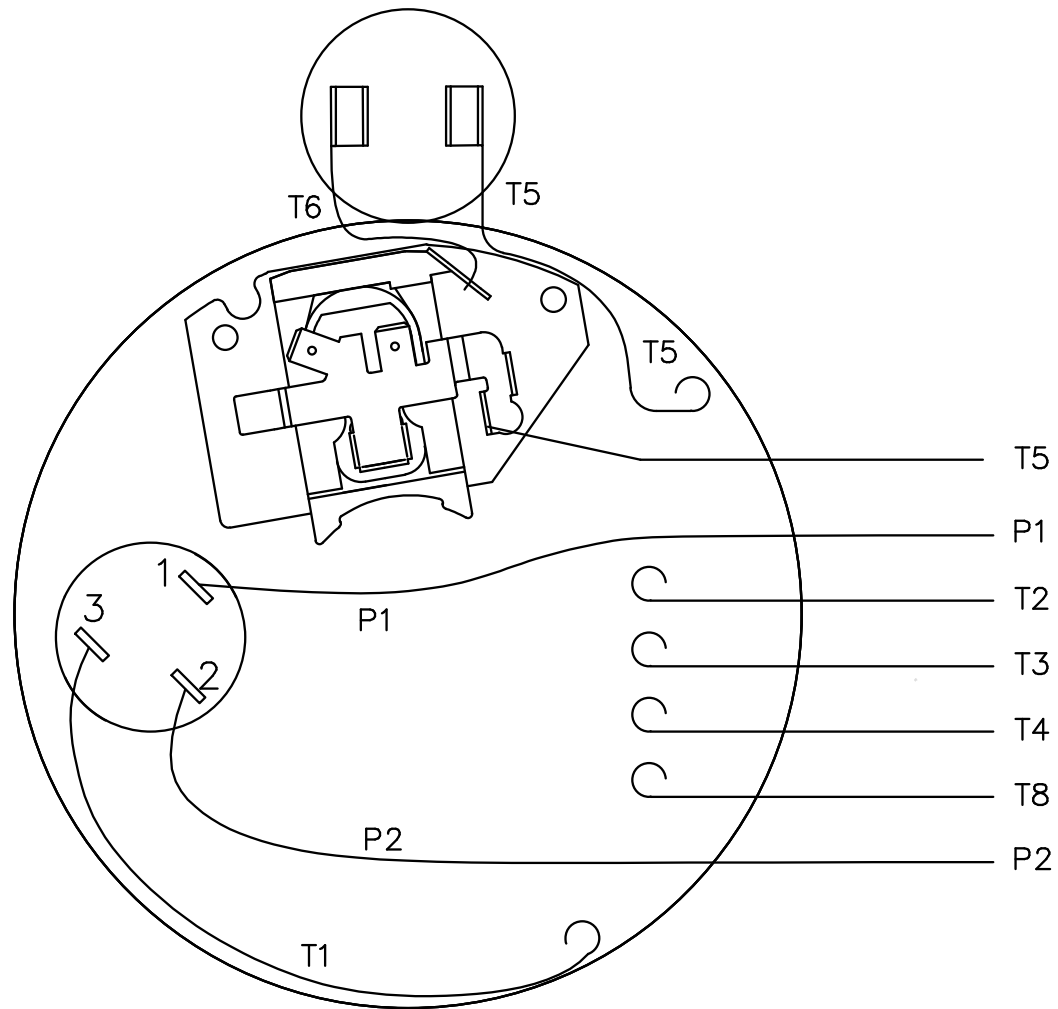
Quote: Price:

Date: 05/01/2014

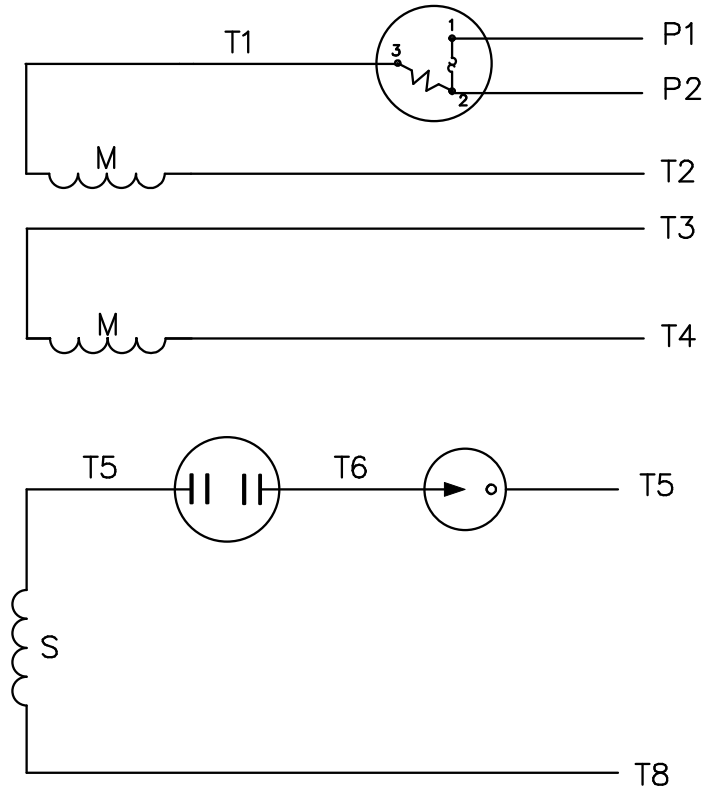


				TOLERANCES UNLESS OTHERWISE SPECIFIED			LEESON ELECTRIC CORPORATION			
				DEC.	INCHES	METRIC				
				.X	±.1	±2.5			OUTLINE - S56 FRAME	
				.XX	±.03	±.76	APPR.		RIGID MOUNT - DRIP PROOF	
				.XXX	±.005	±.127	R.F.P.		MAT'L. 1 PHASE	
NO.	REVISION	BY & DATE	CH'K'D.	.XXXX	±.0005	±.0127	SCALE	1=2		
THIS DRAWING IN DESIGN AND DETAIL IS OUR PROPERTY AND MUST NOT BE USED EXCEPT IN CONNECTION WITH OUR WORK ALL RIGHTS OF DESIGN AND INVENTION ARE RESERVED THIS IS AN ELECTRONICALLY GENERATED DOCUMENT - DO NOT SCALE THIS PRINT				FRACTIONS	±1/64		REF.	031067	FINISH	REV. DRAWING NO. 031640
				ANGLES	±1/2°		FMF	100008		

VIEW FROM OUTSIDE OF MOTOR AT SWITCH END.



LINE LEADS



	ROTATION FACING LEAD END	L1	L2	JOIN	INSULATE SEPARATELY
HIGH VOLT	C.C.W.	P1	T4 T5	T2,T3 T8	P2
	C.W.	P1	T4 T8	T2,T3 T5	P2
LOW VOLT	C.C.W.	P1	T2,T4 T5	P2,T3 T8	--
	C.W.	P1	T2,T4 T8	P2,T3 T5	--

		TOLERANCES UNLESS SPECIFIED		LEESON ELECTRIC MOTORS GEARMOTORS AND DRIVES		DRAWN PG 6/8/01			
		DEC.	INCHES	TITLE		CHK			
		.X	±.1	EXTERNAL WIRING DIAGRAM TYPE "C" W/PROTECTOR		APPD			
		.XX	±.01	MAT'L. DUAL VOLTAGE - DUAL ROTATION		SCALE 1=1			
		.XXX	±.005	FINISH DECAL - 004011		REF 005003-01			
01	MOVED T5 TO "INSIDE" SWITCH TERMINAL	PG	8/2/01	.XXXX	±.0005	FMF 100002			
NO.	REVISION	BY & DATE	CHK	ANG	±1/2"	PREV			
THIS DRAWING IN DESIGN AND DETAIL IS OUR PROPERTY AND MUST NOT BE USED EXCEPT IN CONNECTION WITH OUR WORK ALL RIGHTS OF DESIGN AND INVENTION ARE RESERVED THIS IS AN ELECTRONICALLY GENERATED DOCUMENT - DO NOT SCALE THIS PRINT				RFP	CAD FILE	00500352	SIZE	DRAWING NO.	REV.
				DIST			A	005003-52	01