



A Regal Brand

Northern Tool

Catalog # : 100002.00

Model: A4C17DH3H

Product Type: AC MOTOR

Stock: Stock

Description: ..1/2HP..1725RPM.S56.DP.115/208-230V.1PH.60HZ.CONT.40C.1.25SF.RIGID.A4C17DH3H.....GENERAL PURPOSE.AUTOMATIC.....

Quote: Price:

Date: 05/01/2014



A Regal Brand

Northern Tool

Catalog # : 100002.00

Model: A4C17DH3H

Product Type: AC MOTOR

Stock: Stock

Description: ..1/2HP..1725RPM.S56.DP.115/208-230V.1PH.60HZ.CONT.40C.1.25SF.RIGID.A4C17DH3H.....GENERAL PURPOSE.AUTOMATIC.....

Engineering Data

Volts	115	Volts	208-230	Volts	
F.L. Amps	8.8	F.L. Amps	4-4.4	F.L. Amps	
S. F Amps	9.8	S. F Amps	4.6-4.9	S. F Amps	

RPM	1800	Hertz	60	TYPE	CD
HP	1/2	Duty	CONTINUOUS		
KW					
Frame	S56	Serv. Factor	1.25	Phase	1
Max Amb	40	Design	N	Code	K
Insul Class	B	Protection	AUTOMATIC	Therm.Prot.	CEG65GV
Eff 100%	62	Eff 75%		PF	60
UL	Y-(LEESON UL REC)	CSA	Yes	Bearing OPE	6203
CC Number		CE		Bearing PE	6203
Load Type		Inverter Type	NONE	Speed Range	NONE

Motor Wt.	23 LB	Enclosure	DP	Lubrication	STANDARD
Nameplate	A-92005-6	Mounting	RIGID	Rotation	SELECTIVE CCW
Assembly	LO100002	Shaft Dia.	5/8 IN	Ext. Diag.	005003.52
Cust Part No		Outline	031619-600	Ext. Diag2	
Packaging	B	Outline Dash No		Winding	CE484206
Carton Label	Leeson Gen Purpose			GROUP :	3
Iris		Paint	LEESON BLUE	Test Card	

Form Factor		RMS Amps		Const TorqueSpeed Range	
Torque		Peak			
AB Code		Peak@DegC			
Resistance					
Connection					

Rework Status	Rework TYPE
---------------	-------------

Hazardous Loc  
Explosion Proof  
Class  
Class

NONE

Temp Op Code  
GROUP  
GROUP

Brake Motors  
FORCE  
VDC  
ADC

Brake Coil OHMs @25 C

Performance					
Torque UOM	OZ-FT		Inertia (WK <sup>2</sup> )	-1 LB-FT <sup>2</sup>	
Torque	24(Full Load)		66(Break Down)	62(Pull Up)	80(Locked Rotor)
CURRENT (amps)	4.4(Full Load)		0(Break Down)	0(Pull Up)	19.5(Locked Rotor)
Efficiency (%)	0(Full Load)		57.1(75% Load)	48.4(50% Load)	33.1(25% Load)
PowerFactor	(Full Load)		51.4(75% Load)	42.4(50% Load)	32(25% Load)

Load Curve Data @60 HzVolts,1/2Horsepower

Load	Amps	KW	RPM	Torque	Eff	PF	Rise By Resis	Frame Rise
0.0	4.0	0.197	1794	0.0	0.0	21.4	0.0	-
0.25	3.9	0.287	1784	6.0	33.1	32.0	0.0	-
0.5	4.0	0.39	1772	12.0	48.4	42.4	0.0	-
0.75	4.17	0.493	1760	18.0	57.1	51.4	0.0	-
1.0	4.41	0.606	1745	24.0	62.0	60.1	56.9	-
1.25	4.79	0.731	1730	30.0	63.1	66.4	0.0	-
1.5	5.25	0.866	1708	36.0	63.1	71.7	0.0	-

SOURCE: CALCULATED GROUP: 3

Load Curve Data @60HzVolts,1/2Horsepower

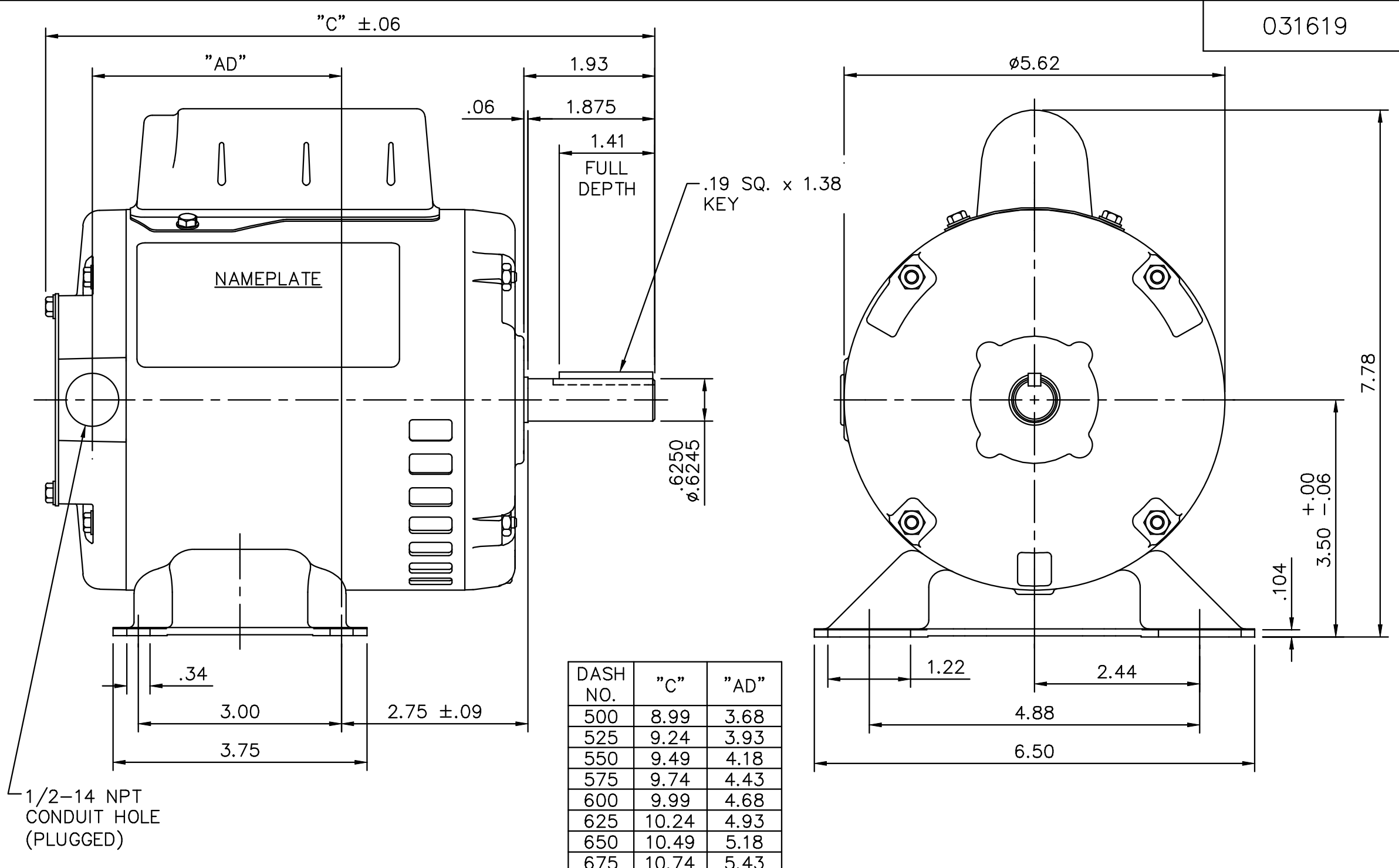
Load	Amps	KW	RPM	Torque	Eff	PF	Rise By Resis	Frame Rise
------	------	----	-----	--------	-----	----	---------------	------------

Load Curve Data Not Available

Quote: Price:

Date: 05/01/2014

031619



1/2-14 NPT  
CONDUIT HOLE  
(PLUGGED)

TOLERANCES UNLESS OTHERWISE SPECIFIED

**LEESON** ELECTRIC CORPORATION

DEC.	INCHES	METRIC
.X	±.1	±2.5
.XX	±.03	±.76
.XXX	±.005	±.127
.XXXX	±.0005	±.0127

DRAWN PG 5/24/01

TITLE  
OUTLINE - S56 FRAME  
RIGID MOUNT - DRIP PROOF

APPR.

MAT'L.  
1 PHASE

R.F.P.

SCALE 1=2

NO.	REVISION	BY & DATE	CH'K'D.

THIS DRAWING IN DESIGN AND DETAIL IS OUR PROPERTY AND MUST NOT BE USED EXCEPT IN CONNECTION WITH OUR WORK ALL RIGHTS OF DESIGN AND INVENTION ARE RESERVED THIS IS AN ELECTRONICALLY GENERATED DOCUMENT - DO NOT SCALE THIS PRINT

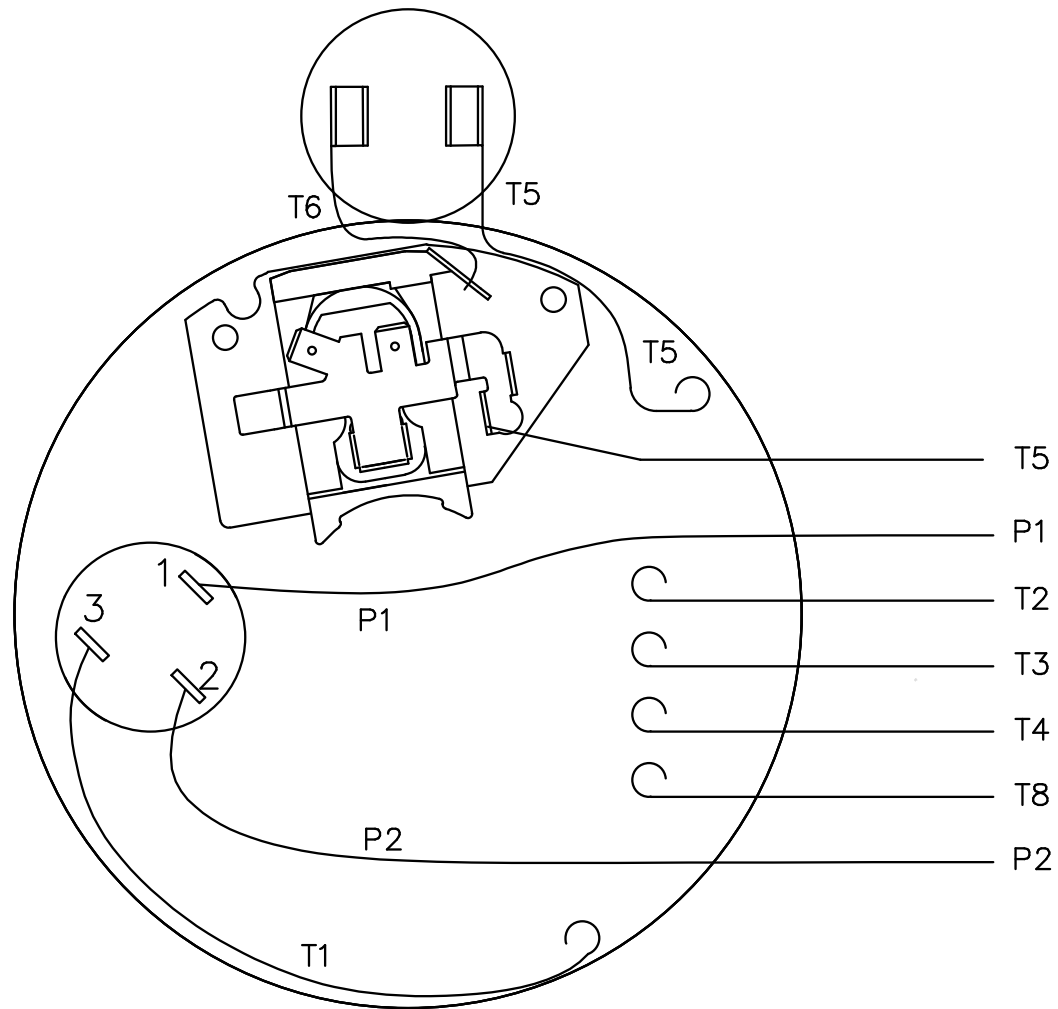
FRACTIONS	±1/64
ANGLES	±1/2°

REF.	031067
FMF	100006

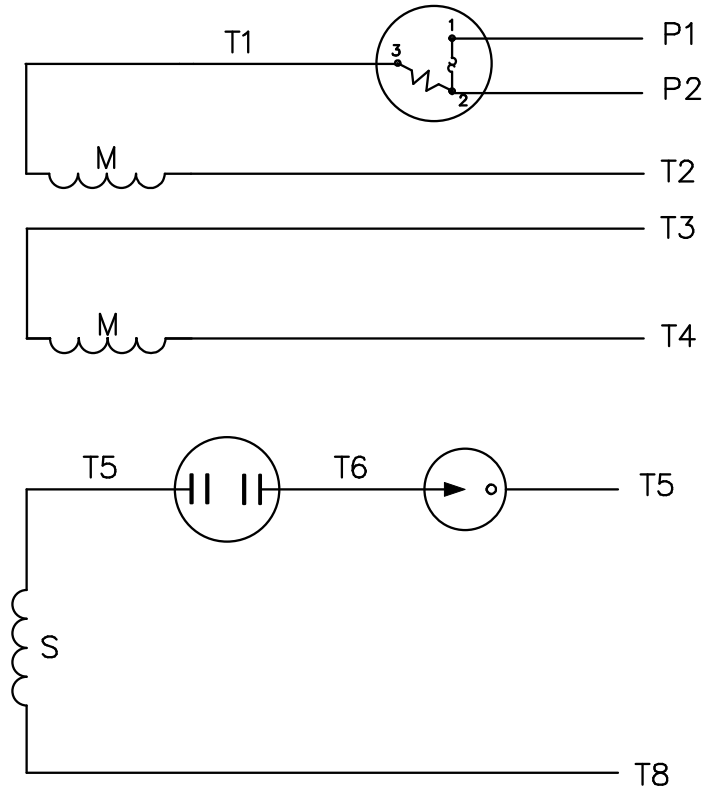
FINISH	
--------	--

REV.	
DRAWING NO.	031619

VIEW FROM OUTSIDE OF MOTOR AT SWITCH END.



LINE LEADS



	ROTATION FACING LEAD END	L1	L2	JOIN	INSULATE SEPARATELY
HIGH VOLT	C.C.W.	P1	T4 T5	T2,T3 T8	P2
	C.W.	P1	T4 T8	T2,T3 T5	P2
LOW VOLT	C.C.W.	P1	T2,T4 T5	P2,T3 T8	--
	C.W.	P1	T2,T4 T8	P2,T3 T5	--

		TOLERANCES UNLESS SPECIFIED		LEESON ELECTRIC MOTORS GEARMOTORS AND DRIVES		DRAWN PG 6/8/01	
		DEC.	INCHES	TITLE		CHK	
		.X	±.1	EXTERNAL WIRING DIAGRAM		APPD	
		.XX	±.01	TYPE "C" W/PROTECTOR		SCALE 1=1	
		.XXX	±.005	MAT'L. DUAL VOLTAGE - DUAL ROTATION		REF 005003-01	
01	MOVED T5 TO "INSIDE" SWITCH TERMINAL	PG	8/2/01	.XXXX	±.0005	FINISH DECAL - 004011	
NO.	REVISION	BY & DATE	CHK	ANG	±1/2"	PREV	
THIS DRAWING IN DESIGN AND DETAIL IS OUR PROPERTY AND MUST NOT BE USED EXCEPT IN CONNECTION WITH OUR WORK ALL RIGHTS OF DESIGN AND INVENTION ARE RESERVED THIS IS AN ELECTRONICALLY GENERATED DOCUMENT - DO NOT SCALE THIS PRINT				RFP	CAD FILE	00500352	SIZE
				DIST			DRAWING NO.
						A	005003-52
							REV.
							01