



A Regal Brand

Northern Tool

Catalog # : 100115.00

Product Type: AC MOTOR

Description: 1/4HP..1725RPM.48.DP.115/208-230V.1PH.60HZ.CONT.AUTOMATIC.40C.1.35SF.RIGID.GENERAL PURPOSE.A4C17DB1H

Model: A4C17DB1H

Stock: Stock

Quote: Price:

Date: 05/02/2014



A Regal Brand

Northern Tool

Catalog # : 100115.00

Model: A4C17DB1H

Product Type: AC MOTOR

Stock: Stock

Description: 1/4HP..1725RPM.48.DP.115/208-230V.1PH.60HZ.CONT.AUTOMATIC.40C.1.35SF.RIGID.GENERAL PURPOSE.A4C17DB1H

Engineering Data

Volts	115	Volts	208-230	Volts	
F.L. Amps	5.4	F.L. Amps	2.6-2.7	F.L. Amps	
S. F Amps	5.8	S. F Amps	2.8-2.9	S. F Amps	

RPM	1800	Hertz	60	TYPE	CD
HP	1/4	Duty	CONTINUOUS	Phase	1
KW	0.19	Serv. Factor	1.35	Code	M
Frame	48	Design	N	Therm.Prot.	CEG69GV
Max Amb	40	Protection	AUTOMATIC	PF	54
Insul Class	B	Eff 75%		Bearing OPE	6203
Eff 100%	59	CSA	Yes	Bearing PE	6203
UL	Y-(LEESON UL REC)	CE		Speed Range	NONE
CC Number		Inverter Type	NONE		
Load Type					

Motor Wt.	16 LB	Enclosure	DP	Lubrication	STANDARD
Nameplate	A-92005-6	Mounting	RIGID	Rotation	SELECTIVE CCW
Assembly	LO100115	Shaft Dia.	1/2 IN	Ext. Diag.	005003.52
Cust Part No		Outline	031621-525	Ext. Diag2	
Packaging	B	Outline Dash No		Winding	CE484209
Carton Label	Leeson Gen Purpose	Paint	LEESON BLUE	GROUP :	3
Iris				Test Card	

Form Factor		RMS Amps		Const TorqueSpeed Range	
Torque		Peak			
AB Code		Peak@DegC			
Resistance					
Connection					

Rework Status	Rework TYPE
---------------	-------------

Hazardous Loc
Explosion Proof
Class
Class

NONE

Temp Op Code
GROUP
GROUP

Brake Motors
FORCE
VDC
ADC

Brake Coil OHMs @25 C

Performance					
Torque UOM	OZ-FT		Inertia (WK ²)	-1 LB-FT ²	
Torque	12(Full Load)		0(No Load)	36.1(Pull Up)	43.2(Locked Rotor)
CURRENT (amps)	2.75(Full Load)		2.6(No Load)	7.5(Pull Up)	12(Locked Rotor)
Efficiency (%)	0(Full Load)		51(75% Load)	42(50% Load)	27(25% Load)
PowerFactor	51.5(Full Load)		45(75% Load)	37(50% Load)	30(25% Load)

Load Curve Data @60 HzVolts, 1/4Horsepower

Load	Amps	KW	RPM	Torque	Eff	PF	Rise By Resis	Frame Rise
0.0	2.55	0.13	1795	0.0	0.5	22.0	0.0	-
0.25	2.6	0.175	1785	3.0	27.0	30.0	0.0	-
0.5	2.6	0.225	1775	6.0	42.0	37.0	0.0	-
0.75	2.65	0.275	1770	9.0	51.0	45.0	0.0	-
1.0	2.75	0.325	1760	12.0	57.0	51.5	0.0	-
1.25	2.9	0.385	1745	15.0	60.5	58.0	0.0	-
1.5	3.05	0.45	1730	18.25	62.5	63.5	0.0	-
1.15	2.82	0.356	1740	13.5	58.8	54.9	0.0	-

SOURCE: CALCULATED GROUP: 3

Load Curve Data @60HzVolts, 1/4Horsepower

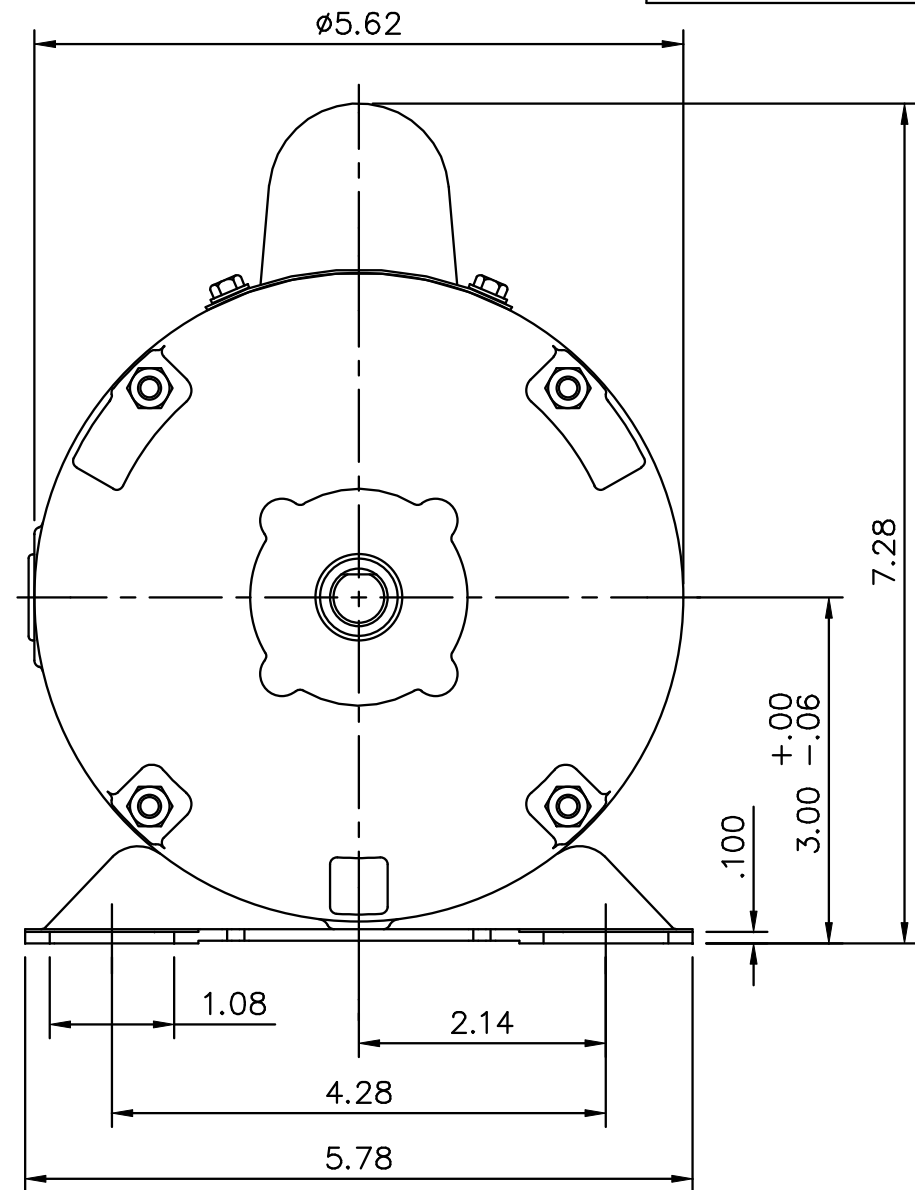
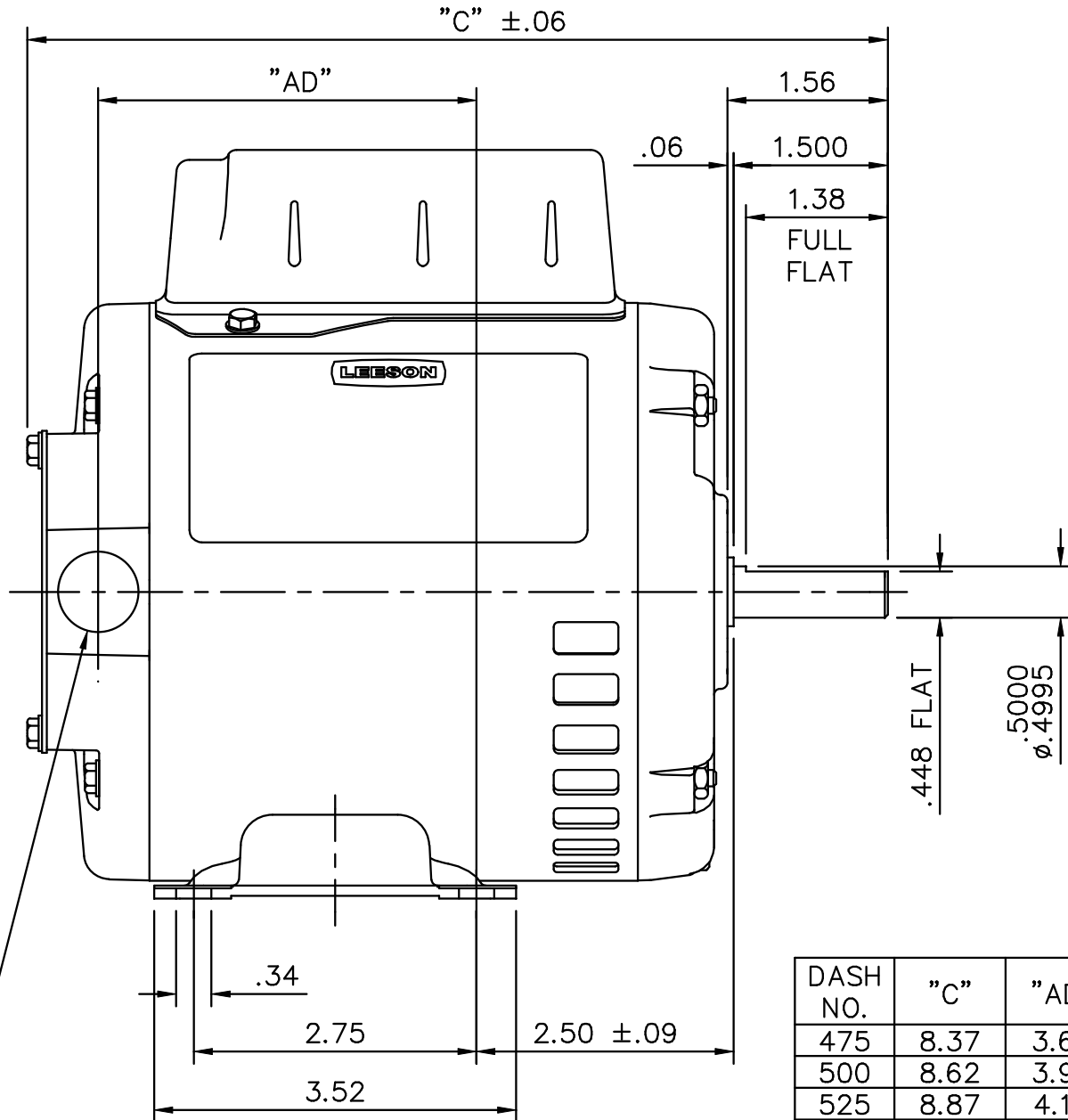
Load	Amps	KW	RPM	Torque	Eff	PF	Rise By Resis	Frame Rise
------	------	----	-----	--------	-----	----	---------------	------------

Load Curve Data Not Available

Quote: Price:

Date: 05/02/2014

031621



DASH NO.	"C"	"AD"
475	8.37	3.68
500	8.62	3.93
525	8.87	4.18
550	9.12	4.43
575	9.37	4.68
600	9.62	4.93
625	9.87	5.18
650	10.12	5.43
675	10.37	5.68

1/2-14 NPT
CONDUIT HOLE
(PLUGGED)

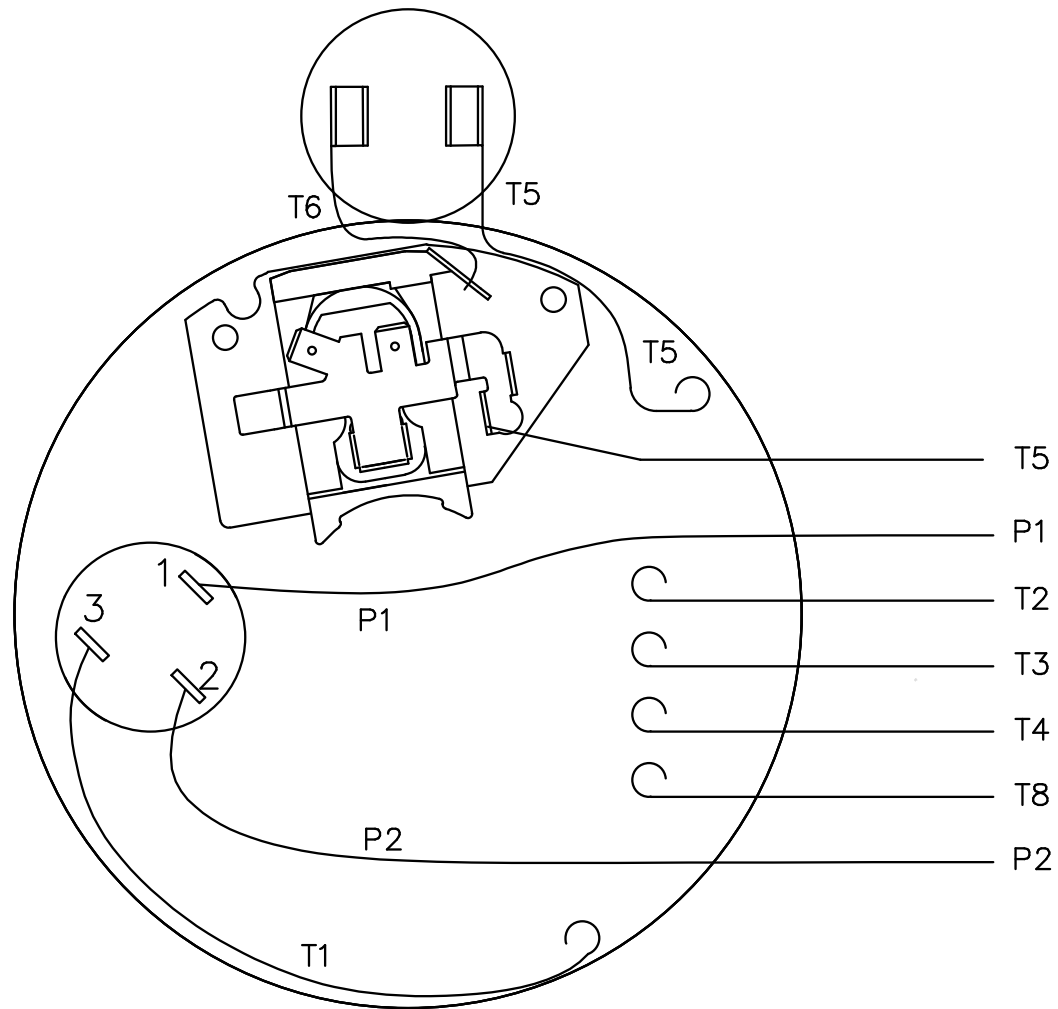
TOLERANCES UNLESS OTHERWISE SPECIFIED

LEESON ELECTRIC CORPORATION

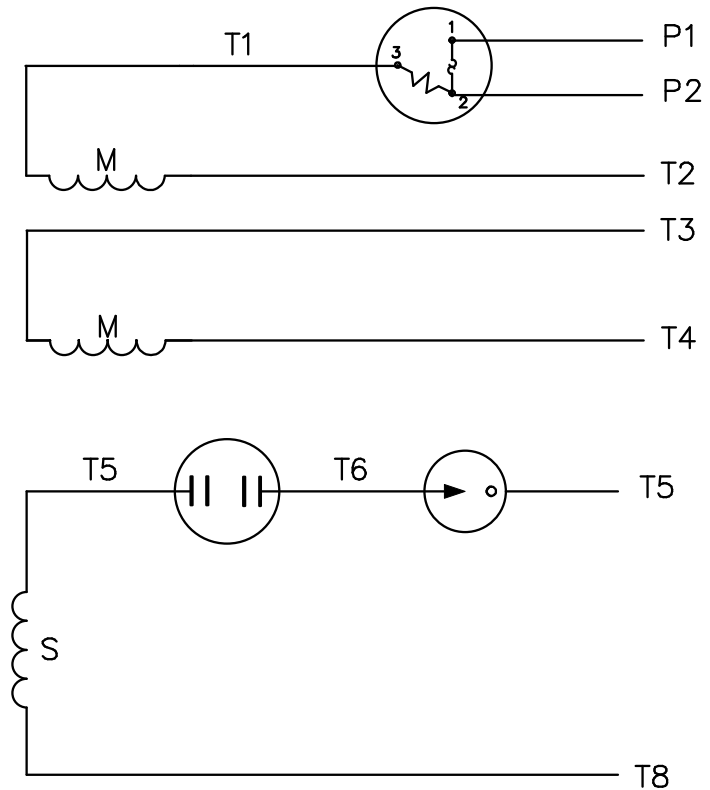
NO.	REVISION	BY & DATE	CH'K'D.	DEC.	INCHES	METRIC	DRAWN	PG	TITLE
				.X	±.1	±2.5	PG 5/24/01		OUTLINE - 48 FRAME
				.XX	±.03	±.76	APPR.		RIGID MOUNT - DRIP PROOF
				.XXX	±.005	±.127	R.F.P.		MAT'L. 1 PHASE
				.XXXX	±.0005	±.0127	SCALE	1=2	
				FRACTIONS	±1/64	REF.	031068	FINISH	REV.
				ANGLES	±1/2°	FMF	100338		DRAWING NO.
									031621

THIS DRAWING IN DESIGN AND DETAIL IS OUR PROPERTY AND MUST NOT BE USED EXCEPT IN CONNECTION WITH OUR WORK ALL RIGHTS OF DESIGN AND INVENTION ARE RESERVED THIS IS AN ELECTRONICALLY GENERATED DOCUMENT - DO NOT SCALE THIS PRINT

VIEW FROM OUTSIDE OF MOTOR AT SWITCH END.



LINE LEADS



	ROTATION FACING LEAD END	L1	L2	JOIN	INSULATE SEPARATELY
HIGH VOLT	C.C.W.	P1	T4 T5	T2,T3 T8	P2
	C.W.	P1	T4 T8	T2,T3 T5	P2
LOW VOLT	C.C.W.	P1	T2,T4 T5	P2,T3 T8	--
	C.W.	P1	T2,T4 T8	P2,T3 T5	--

		TOLERANCES UNLESS SPECIFIED		LEESON ELECTRIC MOTORS GEARMOTORS AND DRIVES		DRAWN PG 6/8/01	
		DEC.	INCHES	TITLE		CHK	
		.X	±.1	EXTERNAL WIRING DIAGRAM TYPE "C" W/PROTECTOR		APPD	
		.XX	±.01	MAT'L. DUAL VOLTAGE - DUAL ROTATION		SCALE 1=1	
		.XXX	±.005	FINISH DECAL - 004011		REF 005003-01	
01	MOVED T5 TO "INSIDE" SWITCH TERMINAL	PG	8/2/01	.XXXX	±.0005	FMF 100002	
NO.	REVISION	BY & DATE	CHK	ANG	±1/2"	PREV	
THIS DRAWING IN DESIGN AND DETAIL IS OUR PROPERTY AND MUST NOT BE USED EXCEPT IN CONNECTION WITH OUR WORK ALL RIGHTS OF DESIGN AND INVENTION ARE RESERVED THIS IS AN ELECTRONICALLY GENERATED DOCUMENT - DO NOT SCALE THIS PRINT				RFP	CAD FILE	00500352	SIZE
				DIST			DRAWING NO.
							A
							005003-52
							REV.
							01