



A Regal Brand

Northern Tool

Catalog # : 131616.00

Model: C184K34DB3B

Product Type: AC MOTOR

Stock: Stock

Description: 5HP..3500RPM.184.DP./208-230V.1PH.60HZ.CONT.NOT.40C.1.15SF.RIGID.GENERAL PURPOSE.C184K34DB3B

Quote: Price:

Date: 05/07/2014



A Regal Brand

Northern Tool

Catalog # : 131616.00

Model: C184K34DB3B

Product Type: AC MOTOR

Stock: Stock

Description: 5HP..3500RPM.184.DP./208-230V.1PH.60HZ.CONT.NOT.40C.1.15SF.RIGID.GENERAL PURPOSE.C184K34DB3B

Engineering Data

Volts	208-230	Volts	Volts
F.L. Amps	24-22	F.L. Amps	F.L. Amps
S. F Amps	27-24.5	S. F Amps	S. F Amps

RPM	3600	Hertz	60	TYPE	KD
HP	5	Duty	CONTINUOUS		
KW	3.73				
Frame	MX184T	Serv. Factor	1.15	Phase	1
Max Amb	40	Design	L	Code	G
Insul Class	F	Protection	NOT	Therm.Prot.	
Eff 100%	80	Eff 75%		PF	92
UL	Yes	CSA	Yes	Bearing OPE	6205
CC Number		CE	No	Bearing PE	6206
Load Type		Inverter Type		Speed Range	NONE

Motor Wt.	87 LB	Enclosure	DP	Lubrication	POLYREX EM
Nameplate	081285	Mounting	RIGID	Rotation	SELECTIVE CCW
Assembly	180-008	Shaft Dia.	1 1/8 IN	Ext. Diag.	005018.01
Cust Part No		Outline	035370-1050	Ext. Diag2	
Packaging	B	Outline Dash No		Winding	K8222
Carton Label	Leeson Gen Purpose			GROUP :	2
Iris		Paint	STANDARD	Test Card	01

Form Factor		RMS Amps	Const Torque	Speed Range
Torque		Peak		
AB Code		Peak@DegC		
Resistance				
Connection				

Rework Status	Rework TYPE
---------------	-------------

Hazardous Loc
Explosion Proof
Class
Class

NONE

Temp Op Code
GROUP
GROUP

Brake Motors
FORCE
VDC
ADC

Brake Coil OHMs @25 C

Performance						
Torque UOM	LB-FT		Inertia (WK ²)		.16 LB-FT ²	
Torque	7.5(Full Load)		19.2(Break Down)		16(Pull Up)	19(Locked Rotor)
CURRENT (amps)	22.2(Full Load)		0(Break Down)		0(Pull Up)	141(Locked Rotor)
Efficiency (%)	0(Full Load)		78.5(75% Load)		75.1(50% Load)	63.2(25% Load)
PowerFactor	(Full Load)		91.3(75% Load)		86.3(50% Load)	73.7(25% Load)

Load Curve Data @60 HzVolts,5Horsepower

Load	Amps	KW	RPM	Torque	Eff	PF	Rise By Resis	Frame Rise
0.0	6.9	0.492	3597	0.0	0.0	31.0	0.0	-
0.25	9.03	1.526	3574	1.9	63.2	73.7	0.0	-
0.5	12.69	2.52	3552	3.75	75.1	86.3	0.0	-
0.75	17.15	3.606	3529	5.65	78.5	91.3	0.0	-
1.0	22.2	4.68	3501	7.5	80.0	93.0	44.9	-
1.25	27.16	5.885	3470	9.4	78.8	94.1	0.0	-
1.5	33.3	7.205	3433	11.3	76.5	94.1	0.0	-

SOURCE: CALCULATED GROUP: 2

Load Curve Data @60HzVolts,5Horsepower

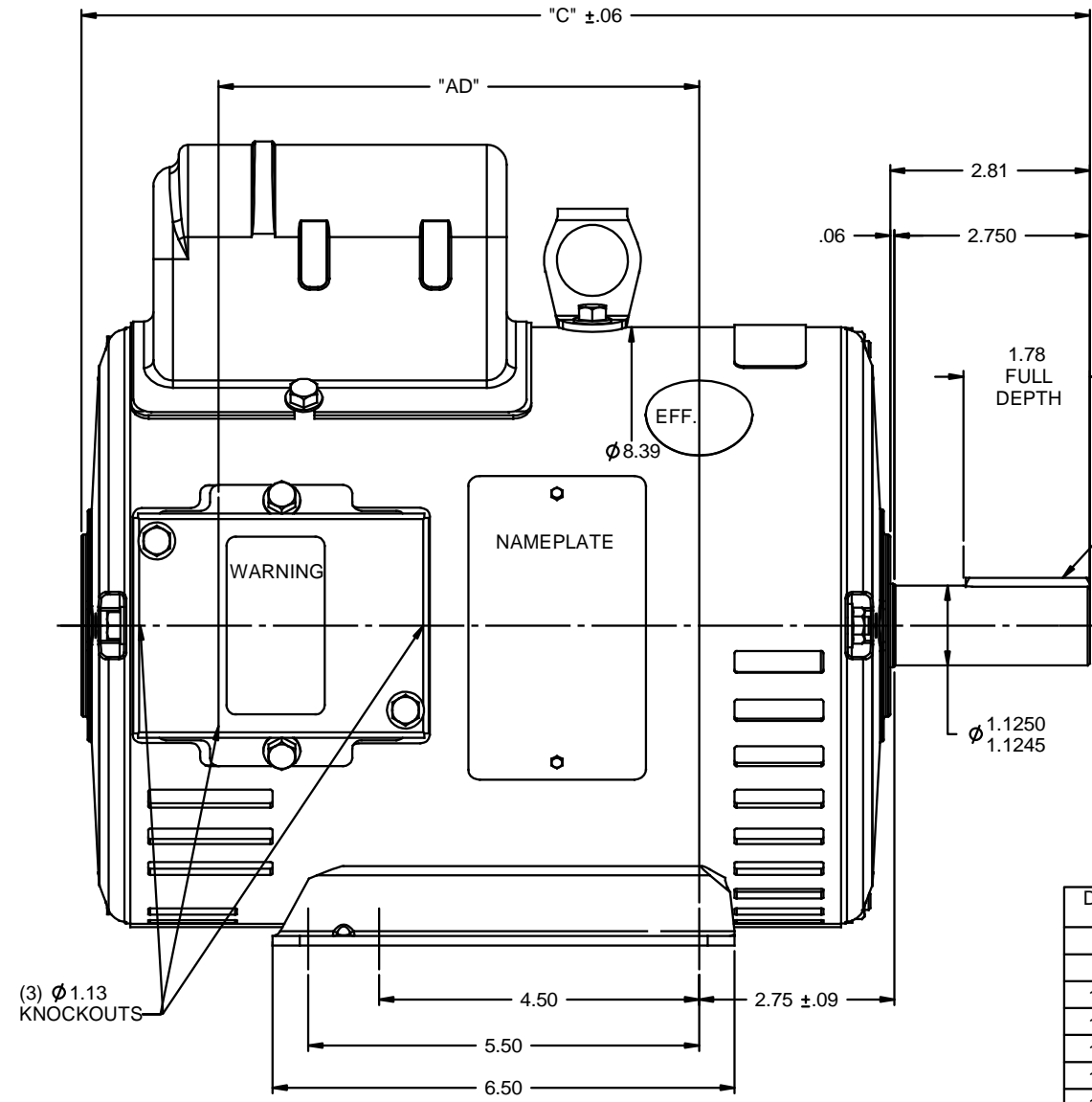
Load	Amps	KW	RPM	Torque	Eff	PF	Rise By Resis	Frame Rise
------	------	----	-----	--------	-----	----	---------------	------------

Load Curve Data Not Available

Quote: Price:

Date: 05/07/2014

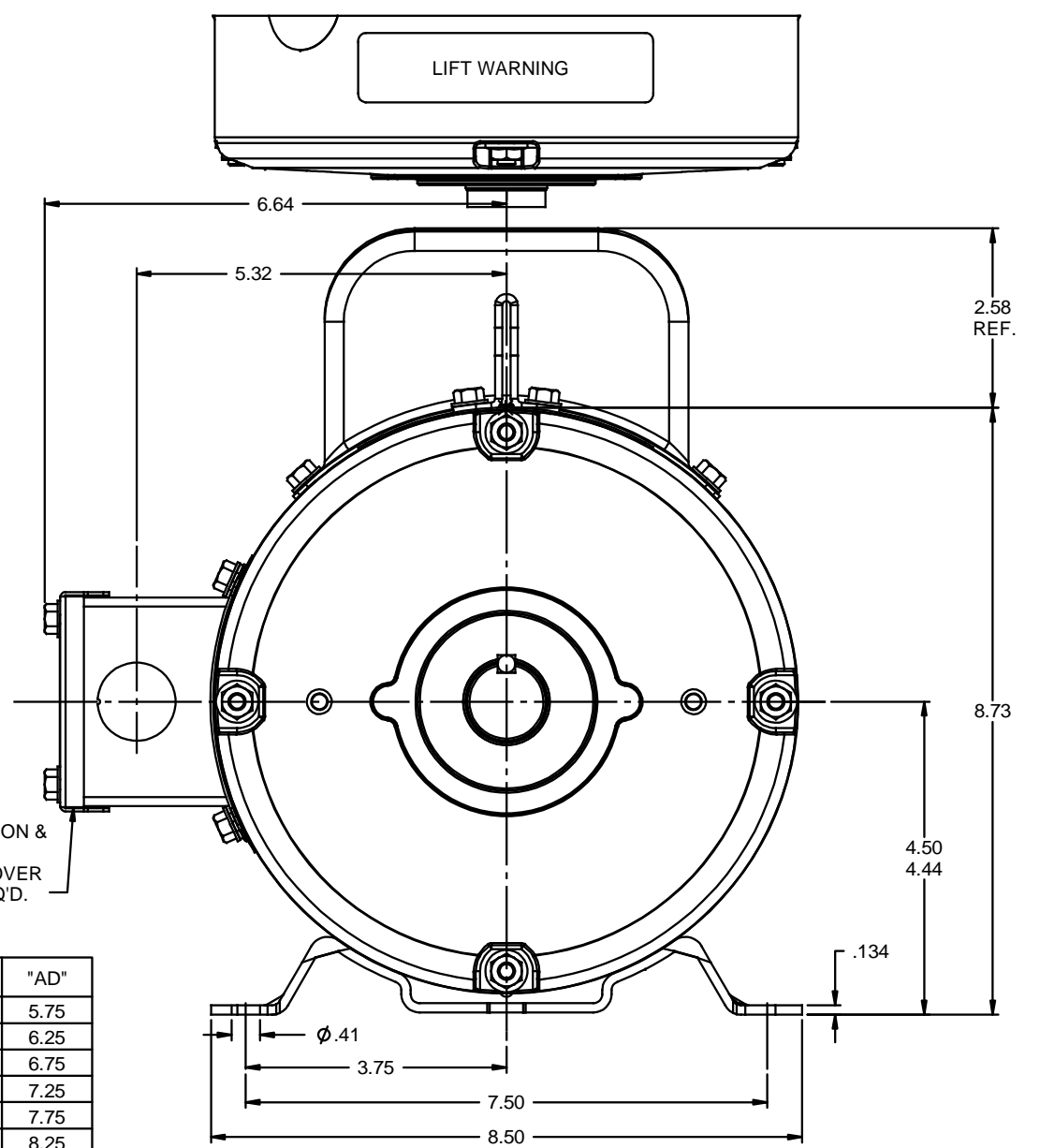
RBC PROPRIETARY AND CONFIDENTIAL INFORMATION
 This document is the property of REGAL BELOIT CORPORATION ("RBC") including its subsidiaries and divisions and contains proprietary information of RBC. This document is loaned on the express condition that neither it nor the information contained therein shall be disclosed to others without the express written consent of RBC, and that the information shall be used by the recipient only as approved expressly by RBC. This document shall be returned to RBC upon its request. This document may be subject to certain restrictions under U.S. export control laws and regulations.



.25 SQ. X 1.75 KEY

DECAL-
CONNECTION &
T'STATS.
UNDER COVER
WHEN REQ'D.

DASH NO.	"C"	"AD"
900	13.19	5.75
950	13.69	6.25
1000	14.19	6.75
1050	14.69	7.25
1100	15.19	7.75
1150	15.69	8.25
1200	16.19	8.75
1250	16.69	9.25



GASKETS THROUGHOUT

REVISION		BY & DATE	CHK	ANG	FINISH	PREV	SIZE	DRAWING NO	REV
-	UPDATED & REDRAWN IN SOLIDWORKS	LST 12/23/2009	XX	XXX	±.0005	MATL	B	035370	-



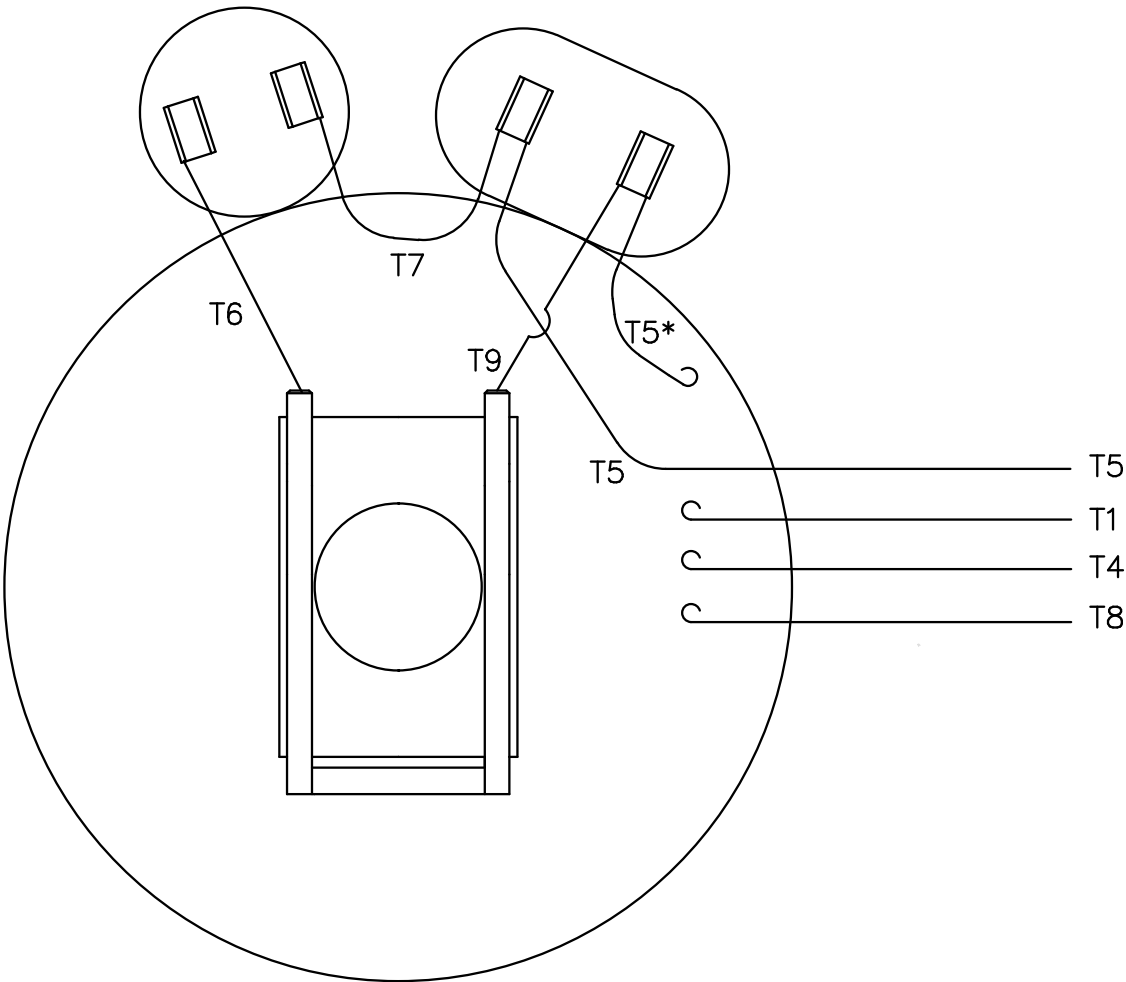
TITLE OUTLINE - 180T FRAME
 DRIP PROOF - RIGID MOUNT

DRAWN PG 10/02/97
 CHK
 APPR
 SCALE 1:2
 REF
 FMF
 PAGE OF

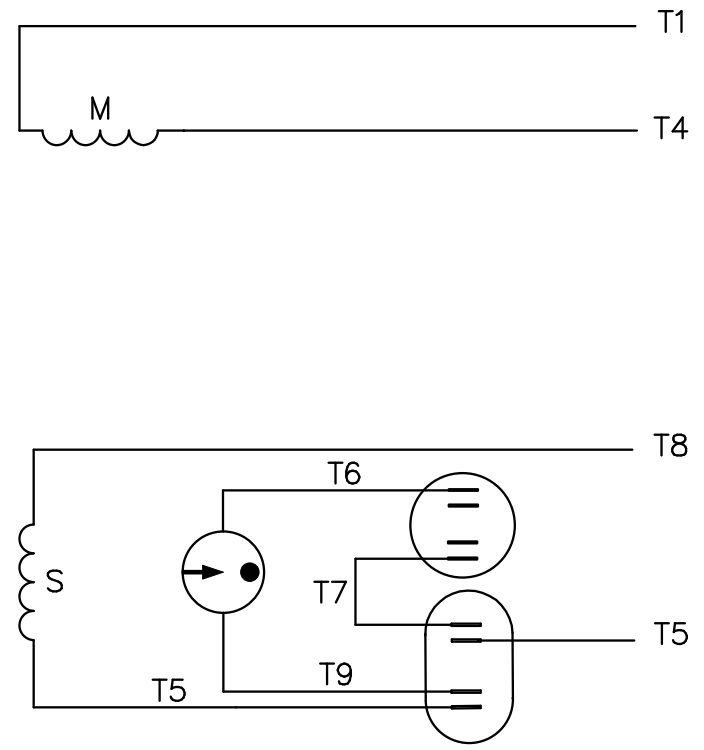


NETWORK FILE NAME

VIEW FROM OUTSIDE OF MOTOR AT SWITCH END.



LINE LEADS



ROTATION FACING LEAD END	L1	L2
C.C.W.	T1,T8	T4,T5
C.W.	T1,T5	T4,T8

* THIS LEAD MAY BE WHITE

		TOLERANCES UNLESS SPECIFIED		ELECTRIC MOTORS GEARMOTORS AND DRIVES		DRAWN ADH 02/19/74			
		DEC.	INCHES			CHK WRK 02/20/74			
			.X	±.1		APPD JCW 02/20/74			
20	ALTERNATE T5 LEAD MARKING WAS RED	RLW 7/22/02	KH	.XX	±.01	SCALE 1=1			
19	ADDED ALTERNATE T5 LEAD MARKING	RLW 5/31/02	KH	.XXX	±.005	REF			
18	REDRAWN ON CAD	DBT 06/24/97		.XXXX	±.0005	FMF			
NO.	REVISION	BY & DATE	CHK	ANG	±1/2"	PREV			
THIS DRAWING IN DESIGN AND DETAIL IS OUR PROPERTY AND MUST NOT BE USED EXCEPT IN CONNECTION WITH OUR WORK ALL RIGHTS OF DESIGN AND INVENTION ARE RESERVED THIS IS AN ELECTRONICALLY GENERATED DOCUMENT - DO NOT SCALE THIS PRINT				RFP	CAD FILE	00501801	SIZE	DRAWING NO.	REV.
				DIST	BRF-NLV		A	005018-01	20