



Parts Information

T30 MODEL 2545 TWO STAGE INDUSTRIAL AIR COMPRESSOR

Parts Information



Save These Instructions



Only allow **Ingersoll Rand** trained Technicians to perform maintenance on this product. For additional information contact **Ingersoll Rand** factory or nearest Distributor.

The use of other than genuine **Ingersoll Rand** replacement parts may result in safety hazards, decreased performance and increased maintenance and may invalidate all warranties.

Refer all communications to the nearest **Ingersoll Rand** Office or Distributor.

TABLE OF CONTENTS

PARTS ORDERING INFORMATION	3
COMPRESSOR PUMP ASSEMBLY DRAWING (VIEW - 1)	4
COMPRESSOR PUMP ASSEMBLY DRAWING (VIEW - 1) PARTS LIST	5
COMPRESSOR PUMP ASSEMBLY DRAWING (VIEW - 2)	6
COMPRESSOR PUMP ASSEMBLY (VIEW - 2) PARTS LIST	7
LOW PRESSURE (FIRST STAGE) VALVE PLATE ASSEMBLY DRAWING AND PARTS LIST	9
HIGH PRESSURE (SECOND STAGE) VALVE PLATE ASSEMBLY DRAWING AND PARTS LIST	10
INTER COOLER ASSEMBLY DRAWING AND PARTS LIST	11
TYPICAL BASEPLATE MOUNTED ELECTRIC PACKAGES	12
TYPICAL SIMPLEX HORIZONTAL RECEIVER MOUNTED ELECTRIC PACKAGES	13
TYPICAL VERTICAL RECEIVER MOUNTED ELECTRIC PACKAGES	14
TYPICAL DUPLEX RECEIVER MOUNTED PACKAGES	15
TYPICAL WIRE BELTGUARD	16
TYPICAL BELTGUARD & AIR COOLED AFTERCOOLER	17
RECOMMENDED PARTS LIST	18
AIR COOLED AFTERCOOLER ADDITION KITS	18
AUTOMATIC DRAIN VALVE TIMER KITS	19
AUTOMATIC DRAIN VALVE ADDITION KITS	19
Maintenance paks	19
Vibration isolator pads	20
Crankcase heater kits	20
Compressor lubricant	20
START-UP-KITS	20
Step saver kits	20

PARTS ORDERING INFORMATION

These products are designed and constructed to provide long, trouble-free service. In time it may be necessary to order and install new parts to replace those that have been subjected to wear.

For your convenience and future reference it is recommended that the following information be recorded.

Model Number _____

Serial Number _____

Date Purchased _____

When ordering replacement parts, please specify the following:

1. Complete model number and serial number as it appears on the data (name) plate.
2. Part number(s) and part description as shown in this manual.
3. Quantity required.

NOTICE

- Continuing improvement and advancement of design may cause changes to this equipment which are not included in this manual. Manuals are periodically revised to incorporate changes. Always check the manual edition number on the front cover for the latest issue.
- Sections of this manual may not apply to your product.
- Using other than genuine **Ingersoll Rand** replacement parts may invalidate the warranty.

■ Return Goods Policy

Ingersoll Rand will not accept any returned goods for warranty or service work unless prior arrangements have been made and written authorization has been provided from the location where the goods were purchased.

Products which have been modified without **Ingersoll Rand** approval, mishandled or misused will not be repaired or replaced under warranty. A printed copy of the warranty which applies to this product is provided inside the back cover of this manual.

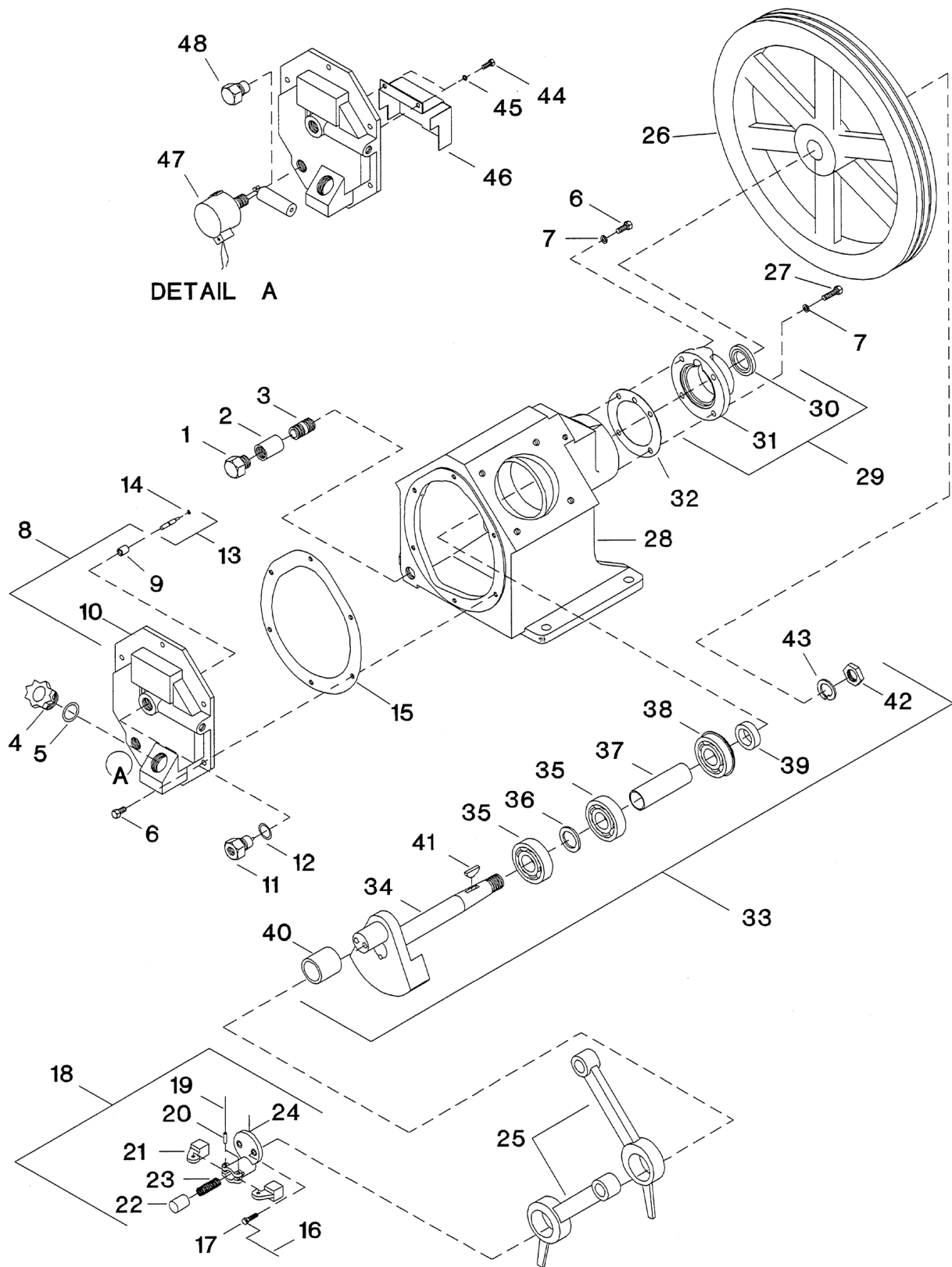
■ Disposal



When the life of the product has expired, it is recommended that it be disassembled, degreased and parts separated as to materials so that they may be recycled.

Refer all communications to the nearest **Ingersoll Rand** Office or Distributor.

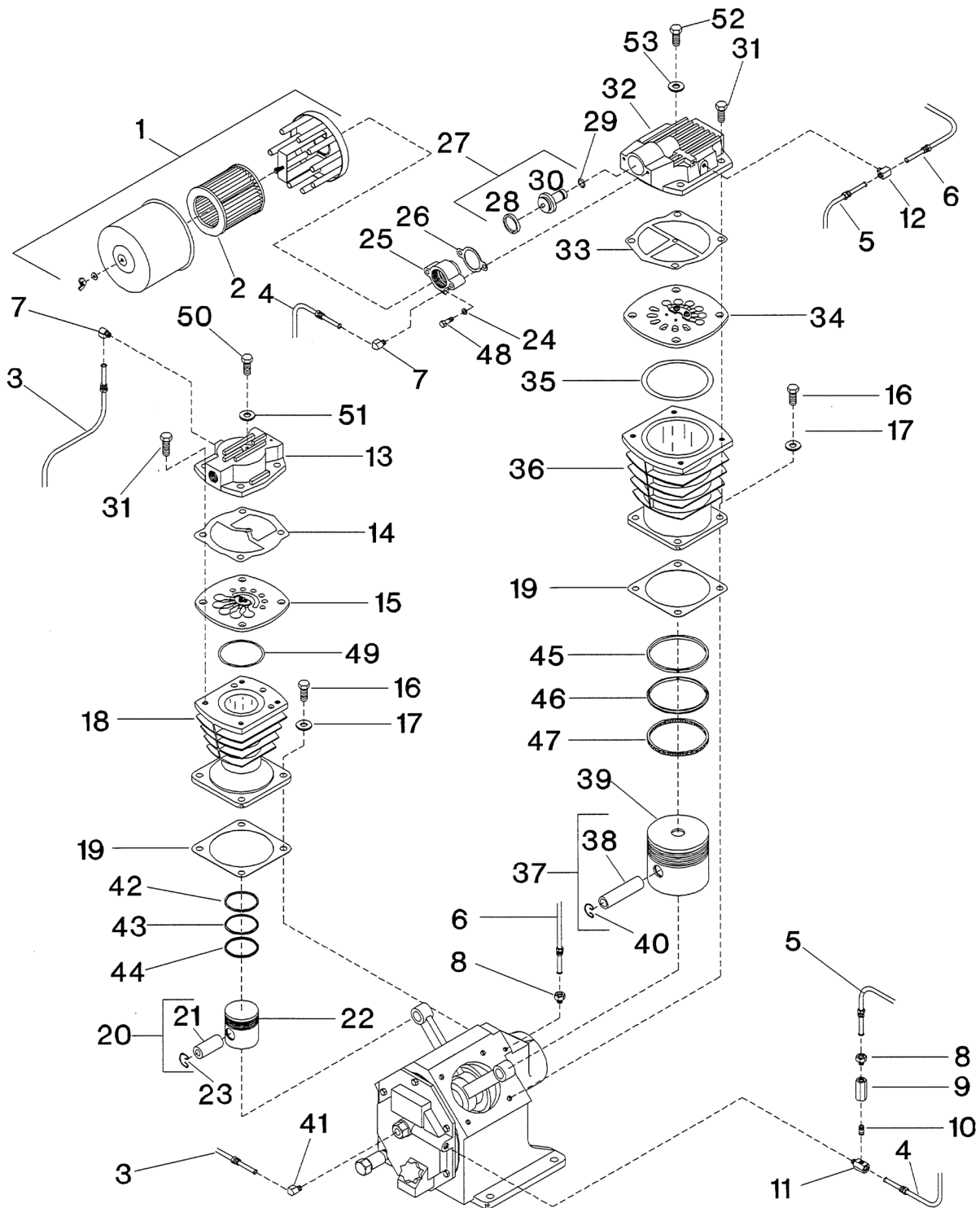
COMPRESSOR PUMP ASSEMBLY DRAWING (VIEW - 1)



COMPRESSOR PUMP ASSEMBLY DRAWING (VIEW - 1) PARTS LIST

REF. NO.	PART NO.	DESCRIPTION	QTY.	SPARES		
				1	2	3
1	95344651	PLUG, PIPE - HEX HEAD 1/2"	1			
2	32179061	COUPLING, PIPE 1/2"	1			
3	95273330	NIPPLE, PIPE	1			
4	32247843	PLUG, OIL FILL	1			
5	32247850	O-RING, OIL FILL PLUG	1	1	1	2
6	95105250	CAP SCREW, HEX HEAD, 5/16 - 18X1"	8			
7	95674651	WASHER, COPPER	2			
8	32293938	ASSEMBLY, FRAME END COVER	1			
9	37127057	• BUSHING, PILOT VALVE	1			
10	NSS	• COVER, FRAME END	1			
11	37113701	VALVE, PILOT	1		1	1
12	30346597	WASHER, COPPER - 7/8"	1			
13	32028698	ASSEMBLY, THRUST PIN	1			
14	95210225	• O - RING, THRUST PIN	1	1	1	2
15	32294035	GASKET, FRAME END COVER	1	1	1	2
16	90799289	LOCK WIRE, 12 GAUGE - 5"	1			
17	30278667	CAP SCREW, LOCK - 3/8-16 X 7/8"	2			
18	30289110	ASSEMBLY, CRANKPIN CAP	1			
19	32006587	• LOCK WIRE -12 GAUGE 4"	1			
20	30215008	• PIN, CENTRIFUGAL UNLOADER WEIGHT	2			
21	30221725	• WEIGHT, CENTRIFUGAL UNLOADER	2			
22	30216113	• PLUNGER, CENTRIFUGAL UNLOADER	1			
23	30416978	• SPRING, CENTRIFUGAL UNLOADER	1			1
24	30210447	• BODY, CRANK PIN CAP	1			
25	32198160	ROD, CONNECTING	2		2	2
26	32496440	BELT WHEEL	1			
27	95079984	CAP SCREW, HEX HEAD, 5/16 X 18-1/4"	2			
28	32203192	FRAME, COMPRESSOR	1			
29	32498008	ASSEMBLY, SHAFT END COVER	1			
30	32497810	• SEAL, OIL	1		1	2
31	NSS	• COVER, SHAFT END	1			
32	32294027	GASKET, SHAFT END COVER	1	1	1	2
33	32294431	ASSEMBLY, CRANKSHAFT	1			
34	NSS	• ASSEMBLY, DISK & SHAFT	1			
35	95200770	• BEARING, BALL	2			
36	32203218	• SPACER, INNER BEARING	1			
37	32203226	• SPACER, OUTER BEARING	1			
38	95305546	• BEARING, BALL - WITH SNAP RING	1			
39	37127941	• RING BEARING RETAINER	1			
40	30210165	• BUSHING, CRANK PIN	1			
41	95433173	• KEY, WOODRUFF	1			
42	95098315	• NUT, BELT WHEEL - 7/8-14	1			
43	95043162	• LOCK WASHER, SPRING - 7/8"	1			
DETAIL A						
44	95053070	CAP SCREW, HEX HEAD - 1/4-20 X 1/2"	2			
45	95043196	LOCK WASHER, SPRING - 1/4"	2			
46	32270654	BAFFLE, LOW OIL LEVEL SWITCH	1			
47	32276313	SWITCH, LOW OIL LEVEL	1			
48	97330245	OIL, SIGHT GLASS (IF LOW OIL LEVEL SWITCH IS NOT USED)	1			

COMPRESSOR PUMP ASSEMBLY DRAWING (VIEW - 2)



COMPRESSOR PUMP ASSEMBLY (VIEW - 2) PARTS LIST

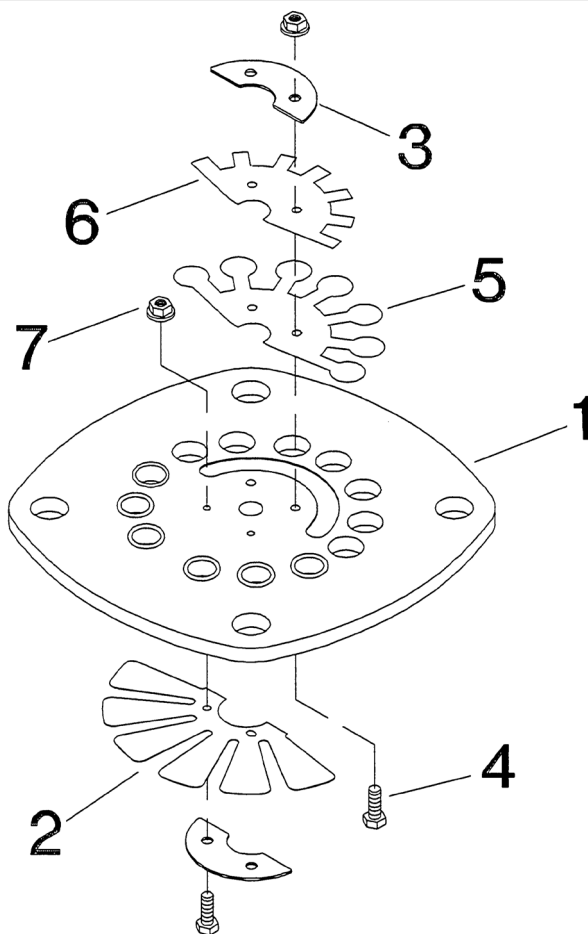
REF. NO.	PART NO.	DESCRIPTION	QTY.	SPARES		
				1	2	3
1	32230542	FILTER, AIR INLET - COMPLETE	1			
2	32012957	• ELEMENT, FILTER - 10 MICRON	1	1	1	1
3	32293953	ASSEMBLY, TUBE - PILOT VALVE/HIGH PRESSURE HEAD	1			
4	32201444	ASSEMBLY, TUBE - FRAME END COVER TEE/INLET	1			
5	32293961	ASSEMBLY, TUBE - FEC CHECK VALVE/LOW PRESSURE HEAD	1			
6	32293946	ASSEMBLY, TUBE - BREATHER	1			
7	95031860	ELBOW, TUBE - 5/16 X 1/8"	2			
8	95082483	CONNECTOR, TUBE - 5/16 X 1/8"	2			
9	32001141	VALVE, CHECK	1			
10	95796017	NIPPLE, CLOSE - 1/8 X 3/4"	1			
11	32203242	CONNECTOR, MALE - 5/16 X 1/4"	1			
12	95007522	TEE, MALE BRANCH - 5/16 X 1/8"	1			
13	32294084	HEAD, HIGH PRESSURE	1			
14	32294043	GASKET, HEAD - HIGH PRESSURE	1	1	1	2
15	32293904	ASSEMBLY, VALVE PLATE - HIGH PRESSURE	1			
16	95053567	CAPSCREW, HEX-1/2-13X1-1/4"	8			
17	95674701	GASKET, COPPER WASHER - 1/2"	8			
18	32295248	CYLINDER - 2-3/4"-2ND STAGE	1			
19	32294019	GASKET, FLANGE	2	2	2	4
20	32496614	COMPLETE, PISTON/PIN - HIGH PRESSURE	1		1	1
21	32182818	• PIN, PISTON	1			
22	NSS	• PISTON - 2-3/4"	1			
23	30287791	• RING, LOCK	2			
24	95043188	LOCKWASHER, SPRING - 5/16"	2			
25	32230633	COVER, UNLOADER	1			
26	32182826	GASKET, UNLOADER COVER	1	1		
27	32256265	ASSEMBLY, PISTON UNLOADER	1	1	1	2
28	32254740	• SEAL - UNLOADER PISTON	1	1	1	2
29	32188385	• O-RING UNLOADER PISTON	1	1	1	2
30	NSS	• PISTON, UNLOADER	1			
31	95104188	CAPSCREW, HEX HEAD 1/2-13X3/4"	8			
32	32499899	HEAD - LOW PRESSURE	1			
33	32294050	GASKET, HEAD, LOW PRESSURE	1	1	1	2
34	32293912	ASSEMBLY, VALVE PLATE - LOW PRESSURE	1			
35	32294076	O-RING, VALVE PLATE	1	1	1	2
36	32295271	CYLINDER 5" - 1ST STAGE	1			
37	32496580	COMPLETE, PISTON/PIN - LOW PRESSURE	1	1	1	2
38	30297022	• PIN, PISTON	1			
39	NSS	• PISTON, LOW PRESSURE (5")	1			
40	30287791	• RING, LOCK	2		1	1
41	95110441	ELBOW, TUBE, 5/16 - 1/4"	1			
42	32294167	SET, HIGH PRESSURE (2.75") PISTON RINGS	1			

EN

COMPRESSOR PUMP ASSEMBLY (VIEW - 2) PARTS LIST

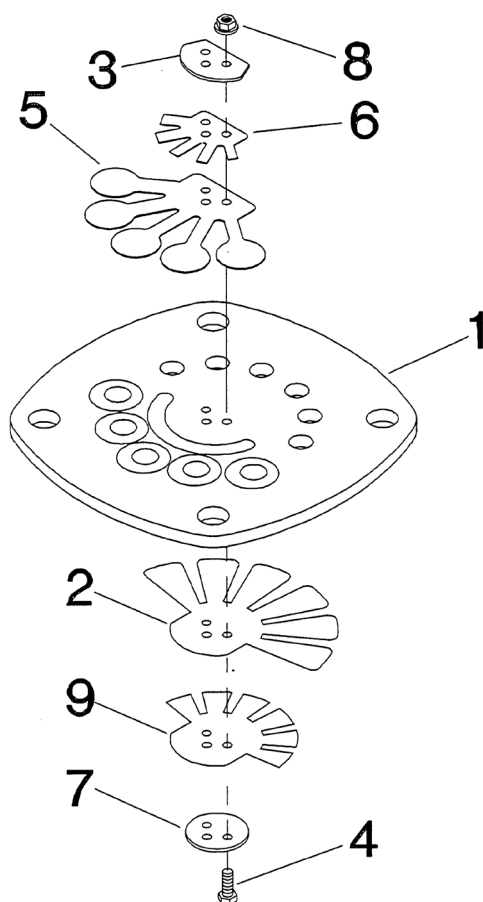
43	32294175	RING, SCRAPER (2.75")	1			
44	32295792	RING-OIL CONTROL (2.75")	1			
45	32294209	SET - LOW PRESSURE (5") PISTON RINGS	1			
46	32294217	RING-SCRAPER (5")	1			
47	32295784	RING, OIL CONTROL (5")	1			
48	95079927	CAP SCREW, HEX HEAD, 5/16-18 X 1-3/4"	2			
49	32294068	O-RING, HOGH PRESSURE VALVE PLATE	1	1	1	2
50	95318978	CAP SCREW, HEX HEAD, 28X2-1/4"	1			
51	95674677	WASHER, COPPER - 3/8"	1			
52	32294373	CAP SCREW, HEX HEAD, 3/8-24 X 3-1/2"	1			
53	32255903	WASHER, COPPER - 1/4"	1			

LOW PRESSURE (FIRST STAGE) VALVE PLATE ASSEMBLY DRAWING AND PARTS LIST



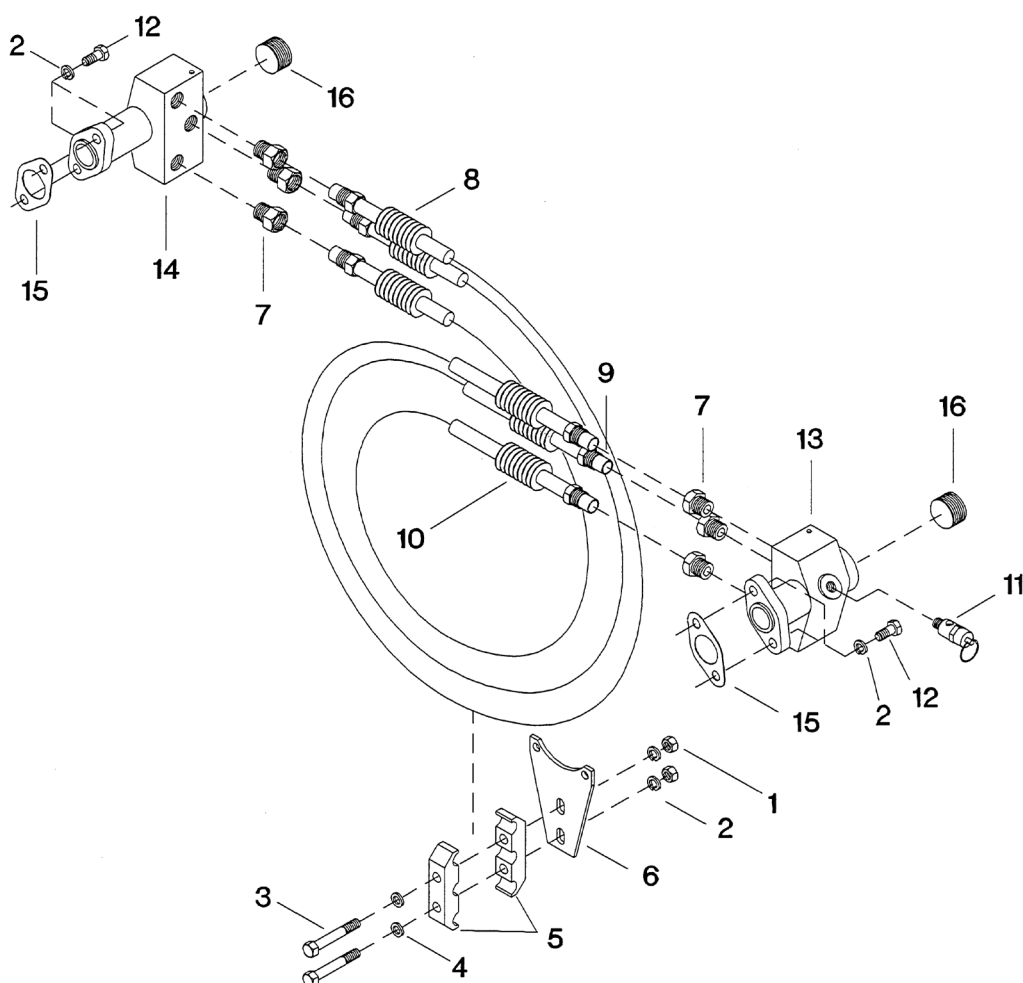
REF. NO.	PART NO.	QTY	DESCRIPTION
REF.	32293912	1	ASSEMBLY, LOW PRESSURE (5") VALVE PLATE
1	32294274	1	PLATE, LOW PRESSURE VALVE
2	32294324	1	VALVE, LOW PRESSURE INTAKE FINGER
3	32294340	2	RETAINER, LOW PRESSURE INTAKE & DISCHARGE VALVES
4	32247512	4	SCREW, M4X12, HEX HEAD
5	32294332	1	VALVE, LOW PRESSURE DISCHARGE FINGER
6	32294365	1	DAMPER, LOW PRESSURE DISCHARGE VALVE
7	32248171	4	NUT, M4 HEX

HIGH PRESSURE (SECOND STAGE) VALVE PLATE ASSEMBLY DRAWING AND PARTS LIST



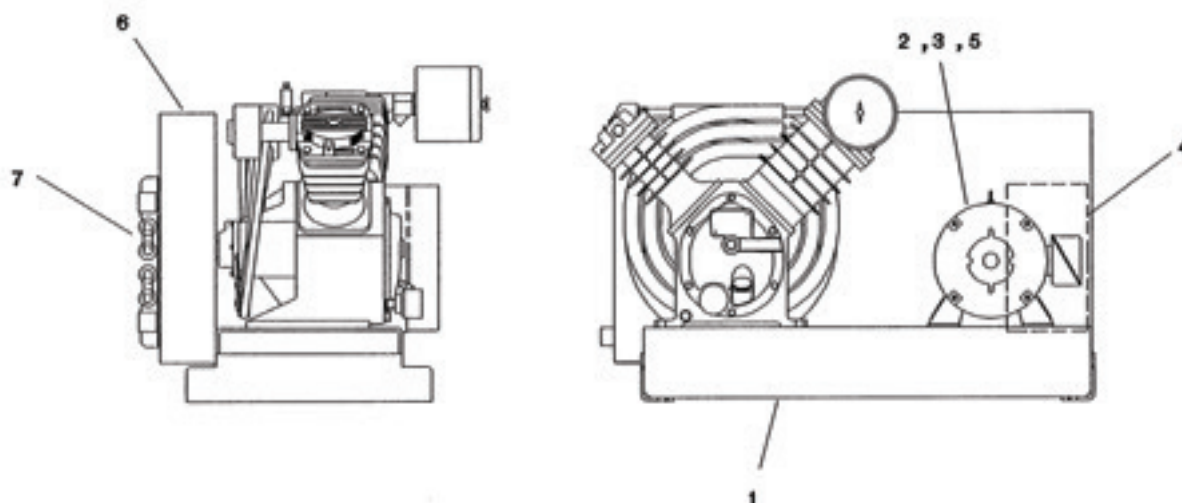
REF. NO.	PART NO.	QTY	DESCRIPTION
REF.	32293904	1	ASSEMBLY, HIGH PRESSURE (2.75") VALVE PLATE
1	32294266	1	PLATE, HIGH PRESSURE VALVE
2	32294282	1	VALVE, HIGH PRESSURE INTAKE FINGER
3	32294316	1	RETAINER, HIGH PRESSURE DISCHARGE VALVE
4	97511042	3	SCREW, M3X16M HEX HEAD
5	32294290	1	VALVE, HIGH PRESSURE DISCHARGE
6	32294357	1	DAMPER, HIGH PRESSURE DISCHARGE VALVE
7	32294308	1	RETAINER, HIGH PRESSURE INTAKE VALVE
8	37511059	3	NUT, M3 HEX WITH LOCK WASHER
9	32295826	1	DAMPER, VALVE

INTER COOLER ASSEMBLY DRAWING AND PARTS LIST



REF. NO.	PART NO.	DESCRIPTION	QTY.	SPARES		
				1	2	3
REF.	32188666	ASSEMBLY, INTERCOOLER	1			
1	95077764	NUT, HEX - 3/8-16	2			
2	95081857	LOCKWASHER, SPRING - 3/8"	6			
3	95079646	CAPSCREW, HEX - 3/8-16X2-1/2"	2			
4	95069597	WASHER, FLAT - 3/8"	2			
5	32294159	CLAMP, INTERCOOLER CLAMP	2			
6	32294142	BRACKET, INTERCOOLER CLAMP	1			
7	95083226	CONNECTOR, MALE - 5/8X1/2"	6			
8	32211708	ASSEMBLY, TUBE - #3 INTERCOOLER	1		1	2
9	32211690	ASSEMBLY, TUBE - #2 INTERCOOLER	1		1	2
10	32211682	ASSEMBLY, TUBE - #1 INTERCOOLER	1		1	2
11	72062185	VALVE, RELIEF - 80PSIG	1			2
12	95468443	CAPSCREW, HEX - 3/8-16X1"	4			
13	32185787	MANIFOLD, HEAD - LP	1			
14	32185795	MANIFOLD, HEAD - HP	1			
15	32188377	GASKET, MANIFOLD	2	2	2	4
16	95101457	PLUG, PIPE - SQUARE COUNTERSUNK - 1"	2			

TYPICAL BASEPLATE MOUNTED ELECTRIC PACKAGES



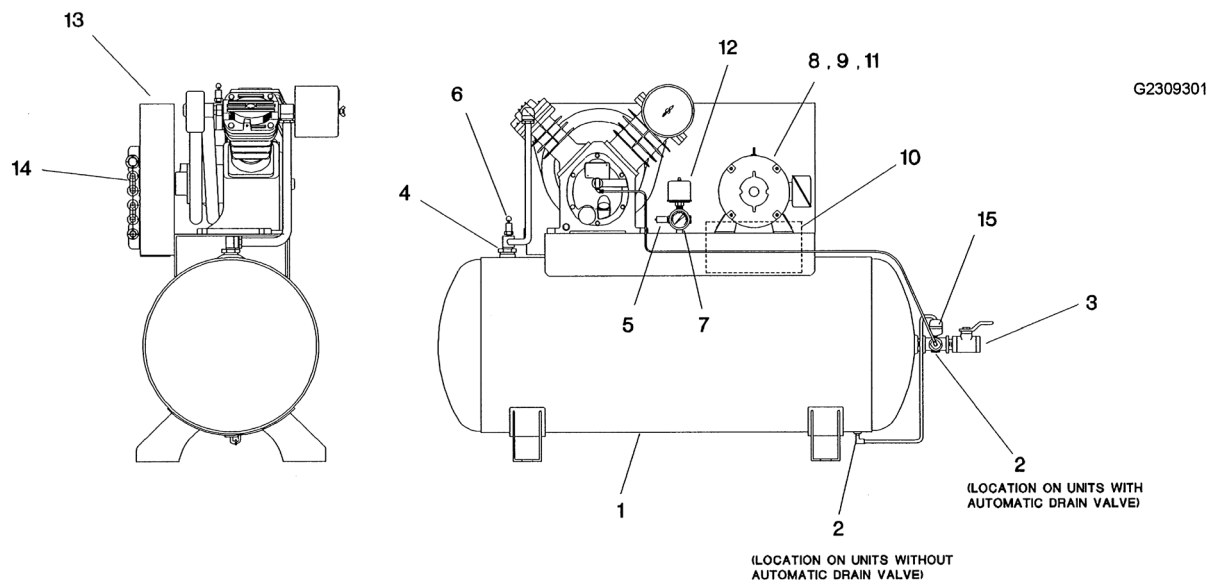
REF. NO.	PART NO.			QTY	DESCRIPTION
	2545X5	2545X7.5	2545X10		
1	32195232	32195232	32195232	1	ASSEMBLY, SUBBASE
2	32036857**	32036972**	97331193**	1	MOTOR, ELECTRIC - 230-3-60
3	32138836**	32121683**	32202395**	1	PULLEY, MOTOR
4	32496903**	32245359**	32496937**	1	STARTER (IF SUPPLIED) - 230-3-60
5	95099552**	32189284**	95099560**	2	BELT, DRIVE
6	REF.	REF.	REF.	1	BELT GAUARD - SHEET METAL TYPE (SEE FIG 11, PG. 18)
6	REF.	REF.	REF.	1	BELT GAUARD - WIRE TYPE (SEE FIG 10, PG. 17)
7	REF.	REF.	REF.	1	AFTER COOLER, AIR COOLED (SEE FIG. 11, PG. 18)
8	32170797	32170797	32170797	1	VALVE, AUXILIARY

**= PART NUMBER VARIES. SUPPLY MODEL NUMBER, SERIAL NUMBER AND COMPLETE MOTOR NAMEPLATE DATA WHEN ORDERING.

REF. = REFERENCE PAGE NUMBER (S) GIVEN IN DESCRIPTION COLUMN.

NOTE: AIR COOLED AFTERCOOLER CANNOT BE MOUNTED ON WIRE BELTGUARD.

TYPICAL SIMPLEX HORIZONTAL RECEIVER MOUNTED ELECTRIC PACKAGES



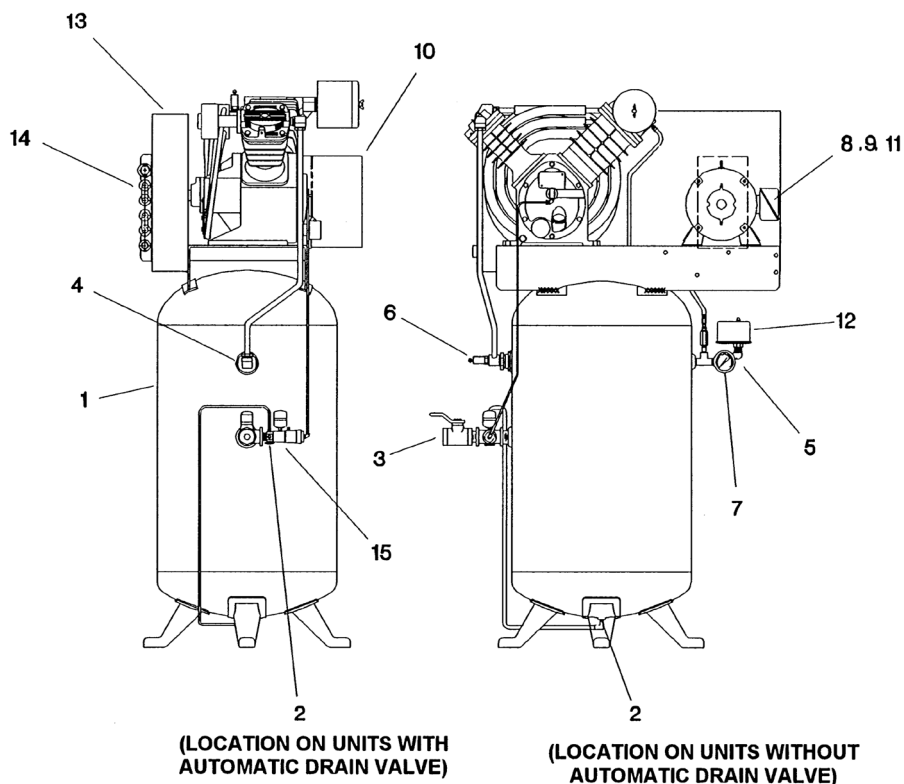
REF. NO.	PART NO.						QTY.	DESCRIPTION
	2545D5	2545D7.5	2545E7.5	2545D10	2545E10	2545E10V		
1	97335772	97335772	32498636	97335772	32498636	32498636	1	ASSEMBLY, RECEIVER-175 PSIG UNITS
2	32027120	32027120	32027120	32027120	32027120	32027120	1	VALVE, MANUAL DRAIN
3	32223596	32223596	32223596	32223596	32106569	32106569	1	VALVE, BALL-SERVICE VALVE
4	32306953	32306953	32306953	32306953	32306953	97331235	1	VALVE, CHECK
5	31385693	31385693	31385693	31385693	31385693	31385693	1	VALVE, SAFETY/RELIEF-RECEIVER 200 PSIG
6	32174286	32174286	32174286	32174286	32174286	32174286	1	VALVE, SAFETY/RELIEF-DISCHARGE 325 PSIG
7	32013872	32013872	32013872	32013872	32013872	32013872	1	GAUGE, PRESSURE-300 PSIG
8	32036857**	32036972**	32036972**	97331193**	97331193**	97331193**	1	MOTOR, ELECTRIC 230/460-3-60 NEMA 1
9	32138836**	32121683**	32121683**	32202392**	32202392**	97331573**	1	PULLY, MOTOR
10	32496903**	32245359**	32245359**	32496937**	32496937**	32496937**	1	STARTER (IF SUPPLIED) 230-3-60 NEMA 1
11	95099552**	32189284**	32189284**	95099560**	95099560**	95100178**	3	BELT, DRIVE
12	32496887**	32496867**	32496867**	32496887**	32496887**	32307043**	1	SWITCH, PRESSURE-NEMA1
13	REF.	REF.	REF.	REF.	REF.	REF.	1	BELTGAURD, COMPLETE-SHEET METAL TYPE (SEE FIG.11, PG. 18)
13	REF.	REF.	REF.	REF.	REF.	REF.	1	BELTGAURD, COMPLETE-WIRE TYPE (SEE FIG.10, PG. 17)
14	REF.	REF.	REF.	REF.	REF.	REF.	1	AFTERCOOLER, AIR COOLED (SEE FIG.11, PG. 18)
15	REF.	REF.	REF.	REF.	REF.	REF.	1	VALVE, AUTOMATIC DRAIN (IF SUPPLIED) (SEE FIG.12, PG.20)
NI	32170797	32170797	32170797	32170797	32170797	-	1	VALVE, AUXILIARY-NEMA 1

**= PART NUMBER VARIES. SUPPLY MODEL NUMBER, SERIAL NUMBER AND COMPLETE MOTOR NAMEPLATE DATA WHEN ORDERING.

REF. = REFERENCE PAGE NUMBER (S) GIVEN IN DESCRIPTION COLUMN.

NOTE: AIR COOLED AFTERCOOLER CANNOT BE MOUNTED ON WIRE BELTGUARD.

TYPICAL VERTICAL RECEIVER MOUNTED ELECTRIC PACKAGES



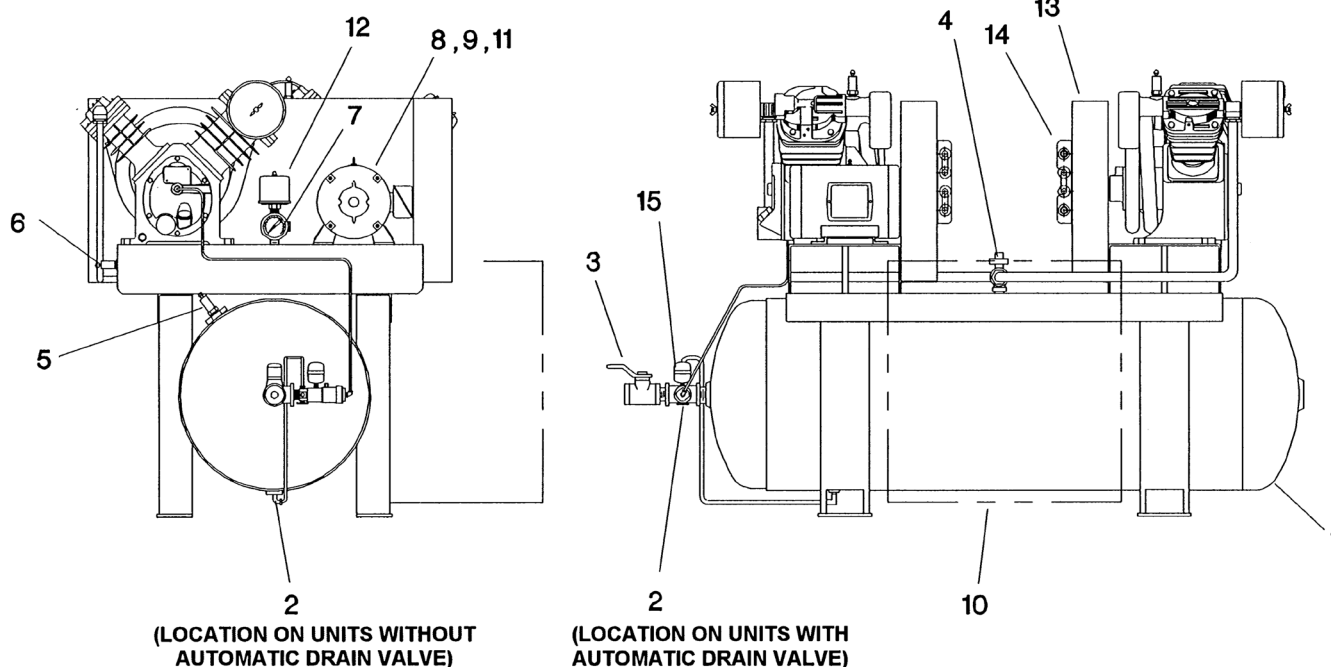
REF. NO.	PART NO.				QTY	DESCRIPTION
	2545N7.5	2545K7.5	2545N10	2545K10		
1	32234395	32234411	32234395	32234411	1	ASSEMBLY, RECEIVER-175 PSIG UNITS
2	32027120	32027120	32027120	32027120	1	VALVE, MANUAL DRAIN
3	32106569	32223604	32106569	32223604	1	VALVE, BALL-SERVICE VALVE
4	32306953	32306953	32306953	32306953	1	VALVE, CHECK
5	31385693	31385693	31385693	31385693	1	VALVE, SAFETY/RELIEF-RECEIVER 200 PSIG
6	32174286	32174286	32174286	32174286	1	VALVE, SAFETY/RELIEF-DISCHARGE 325 PSIG
7	32013872	32013872	32013872	32013872	1	GAUGE, PRESSURE-300 PSIG
8	32036972**	32036972**	97331193**	97331193**	1	MOTOR, ELECTRIC 230-3-60
9	32121683**	32121683**	32202392**	32202392**	1	PULLY, MOTOR
10	32245359**	32245359**	32496937**	32496937**	1	STARTER (IF SUPPLIED) 230-3-60
11	32189284**	32189284**	95099560**	95099560**	3	BELT, DRIVE
12	32496887**	32496887**	32496867**	32496887**	1	SWITCH, PRESSURE-NEMA 1
13	REF.	REF.	REF.	REF.	1	BELTGAURD, COMPLETE-SHEET METAL TYPE (SEE FIG.11, PG. 18)
13	REF.	REF.	REF.	REF.	1	BELTGAURD, COMPLETE-WIRE TYPE (SEE FIG.10, PG. 17)
14	REF.	REF.	REF.	REF.	1	AFTERCOOLER, AIR COOLED (SEE FIG.11, PG. 18)
15	REF.	REF.	REF.	REF.	1	VALVE, AUTOMATIC DRAIN (IF SUPPLIED) (SEE FIG.12, PG.20)
NI	32170797	32170797	32170797	32170797	1	VALVE, AUXILIARY

**= PART NUMBER VARIES. SUPPLY MODEL NUMBER, SERIAL NUMBER AND COMPLETE MOTOR NAMEPLATE DATA WHEN ORDERING.

REF. = REFERENCE PAGE NUMBER (S) GIVEN IN DESCRIPTION COLUMN.

NOTE: AIR COOLED AFTERCOOLER CANNOT BE MOUNTED ON WIRE BELTGUARD.

TYPICAL DUPLEX RECEIVER MOUNTED PACKAGES



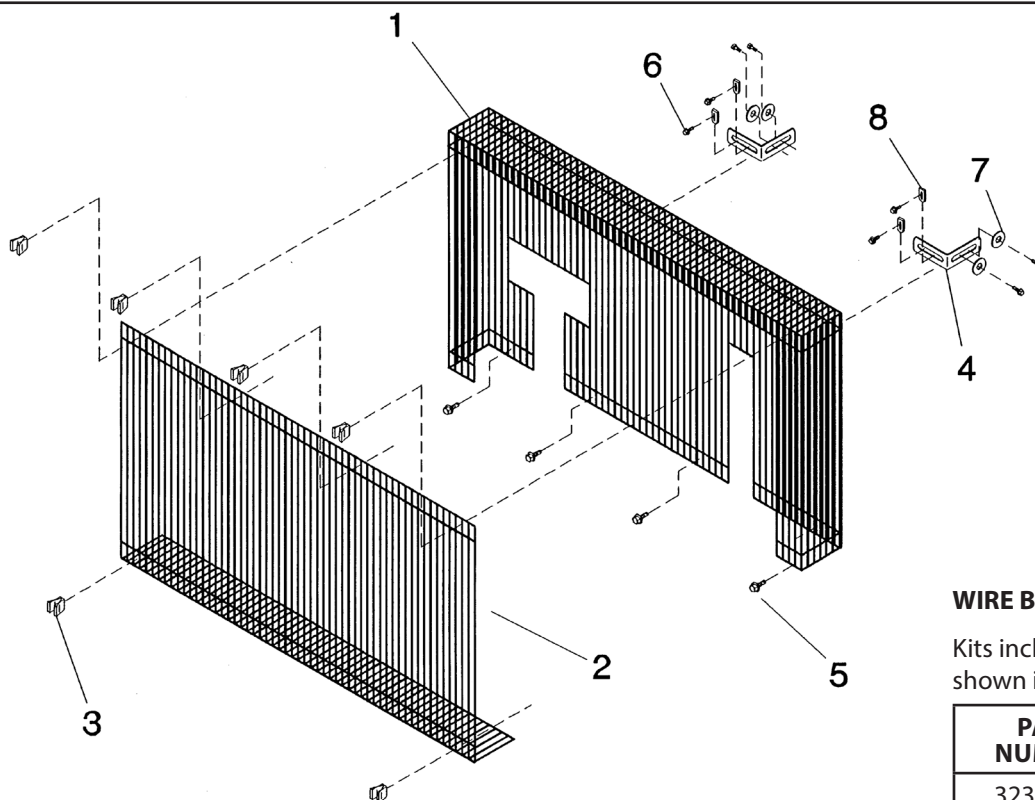
REF. NO.	PART NO.				QTY	DESCRIPTION
	2545N7.5	2545K7.5	2545N10	2545K10		
1	32239915	32243693	32239915	32243693	1	ASSEMBLY, RECEIVER
2	32027120	32027120	32027120	32027120	1	VALVE, MANUAL DRAIN
3	32223604	32223604	32223604	32223604	1	VALVE, BALL-SERVICE VALVE
4	32306953	32306953	32306953	32306953	1	VALVE, CHECK
5	31385693	31385693	31385693	31385693	1	VALVE, SAFETY/RELIEF-RECEIVER
6	32174286	32174286	32174286	32174286	2	VALVE, SAFETY/RELIEF-DISCHARGE
7	32013872	32013872	32013872	32013872	1	GAUGE, PRESSURE-300 PSIG
8	32036972**	32036972**	97331193**	97331193**	2	MOTOR, ELECTRIC 230-3-60
9	32121683**	32121683**	32202392**	32202392**	2	PULLY, MOTOR
10	32237141**	32237141**	32237141**	32237141**	1	STARTER (IF SUPPLIED) 230/3/60
11	32189284**	32189284**	95099560**	95099560**	6	BELT, DRIVE
12	37005907**	37005907**	37005607**	37005907**	2	SWITCH, PRESSURE-NEMA1
13	REF.	REF.	REF.	REF.	2	BELTGAURD, COMPLETE-SHEET METAL TYPE (SEE FIG.11, PG. 18)
13	REF.	REF.	REF.	REF.	2	BELTGAURD, COMPLETE-WIRE TYPE (SEE FIG.10, PG. 17)
14	REF.	REF.	REF.	REF.	2	AFTERCOOLER, AIR COOLED (SEE FIG.11, PG. 18)
15	REF.	REF.	REF.	REF.	1	VALVE, AUTOMATIC DRAIN (IF SUPPLIED) (SEE FIG.12, PG.20)
NI	32170797	32170797	32170797	32170797	1	VALVE, AUXILIARY

**= PART NUMBER VARIES. SUPPLY MODEL NUMBER, SERIAL NUMBER AND COMPLETE MOTOR NAMEPLATE DATA WHEN ORDERING.

REF. = REFERENCE PAGE NUMBER (S) GIVEN IN DESCRIPTION COLUMN.

NOTE: AIR COOLED AFTERCOOLER CANNOT BE MOUNTED ON WIRE BELTGUARD.

TYPICAL WIRE BELTGUARD



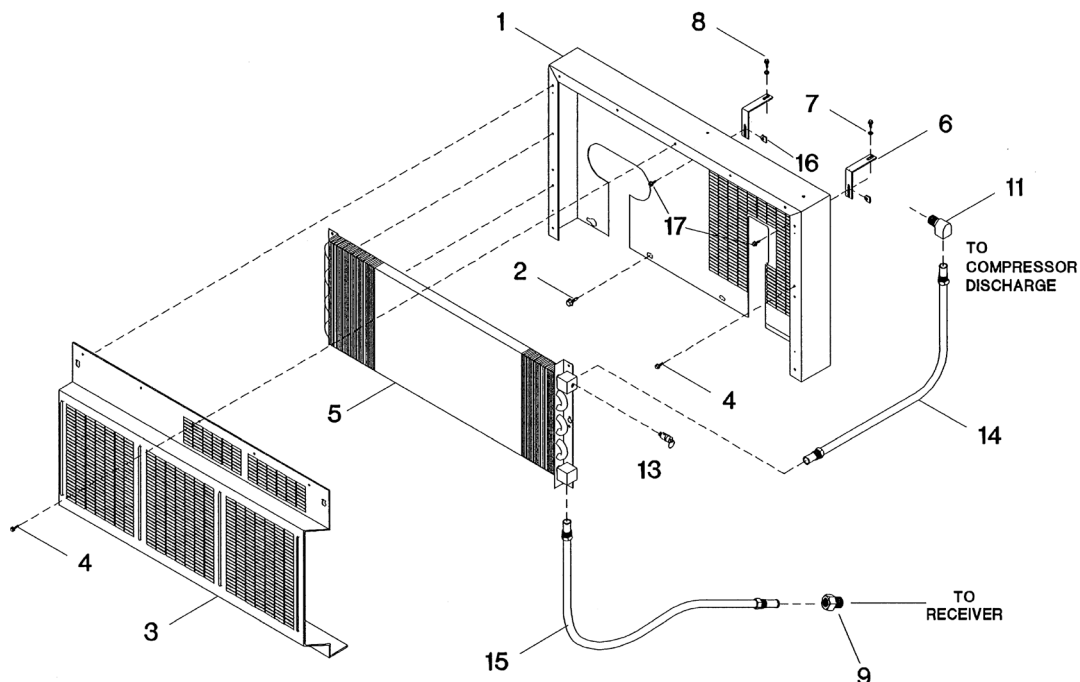
WIRE BELTGUARD KITS

Kits include everything shown in figure 10.

PART NUMBER	MODEL
32323362	2545E10V

REF. NO.	PART NO.	QTY	DESCRIPTION
1	97331219	1	BACK, BELTGUARD-WIRE TYPE BELTGUARD
2	97331201	1	COVER, BELTGUARD-WIRE TYPE BELTGUARD
3	32496093	6	CLIP, PLASTIC-WIRE TYPE BELTGUARD
4	32188518	2	BRACE, BELTGUARD-WIRE TYPE BELTGUARD
5	32000705	4	SCREW, SELF-TAPPING-3/8-16X3/4"
6	32175564	8	CAPSCREW, SERRATED WASHER HEAD-1/4-20X3/4"
6	97007447	4	WASHER, FLAT-1/4"
7	32241200	4	FASTENER, "U" TYPE

TYPICAL BELTGUARD & AIR COOLED AFTERCOOLER



REF. NO.	PART NO.							DESCRIPTION
	2545X5 2545X7.5 2545X10	2545D5 2545D7.5 2545D10	2545E7.5 2545E10V	2545N7.5 2545E10V	2545K7.5 2545K10	2-2545E7.5 2-2545E10	2-2545A7.5 2-2545A10	
1	32315590 (1)	32315590 (1)	32315590 (1)	32315590 (1)	32315590 (1)	32315590 (2)	32315590 (2)	BACK, BELTGUARD
2	32000705 (4)	32000705 (4)	32000705 (4)	32000705 (4)	32000705 (4)	32000705 (8)	32000705 (8)	SCREW, TAPPING-3/8-16X3/4"
3	32244808 (1)	32244808 (1)	32244808 (1)	32244808 (1)	32244808 (1)	32244808 (2)	32244808 (2)	COVER, AFTERCOOLER
4	32187056 (17)	32187056 (17)	32187056 (17)	32187056 (17)	32187056 (17)	32187056 (34)	32187056 (34)	SCREW, SELF-DRILLING-1/4-14
5	32498057 (1)	32498057 (1)	32498057 (1)	32498057 (1)	32498057 (1)	32498057 (2)	32498057 (2)	COIL, AFTERCOOLER
6	32188518 (2)	32188518 (2)	32188518 (2)	32188518 (2)	32188518 (2)	32188518 (4)	32188518 (4)	BRACE, BELTGUARD
7	97007447 (2)	97007447 (2)	97007447 (2)	97007447 (2)	97007447 (2)	97007447 (4)	97007447 (4)	WASHER, FLAT-1/4"
8	97173595 (2)	97173595 (2)	97173595 (2)	97173595 (2)	97173595 (2)	97173595 (4)	97173595 (4)	CAPSCREW, SELF-TAPPING-1/4-20X1/2"
9	-	32306953 (1)	32306953 (1)	32306953 (1)	32306953 (1)	32306953 (2)	32306953 (2)	VALVE, CHECK
10	32186421 (1)	95245320 (1)	95245320 (1)	-	95245320 (1)	95245320 (2)	95245320 (2)	BUSHING, REDUCING
11	95031761 (1)	95031761 (1)	95031761 (1)	95031761 (1)	95031761 (2)	95031761 (2)	95031761 (2)	ELBOW, TUBE-3/4"X3/4"
12	-	-	-	-	-	-	-	CONNECTOR-3/4"X3/4"
13	32174286 (1)	32174286 (1)	32174286 (1)	32174286 (1)	32174286 (1)	32174286 (2)	32174286 (2)	VALVE, RELIEF-325 PSIG
14	32308074 (1)	32308074 (1)	32308074 (1)	32308074 (1)	32308074 (1)	32308074 (2)	32308074 (2)	ASSEMBLY, TUBE-COMPRESSOR TO AFTERCOOLER
15	-	32496713 (1)	32497133 (1)	32498073 (1)	32498081 (1)	32498131 (2)	32498131 (2)	ASSEMBLY, TUBE-AFTERCOOLER TO RECEIVER
16	32241200 (2)	32241200 (2)	32241200 (2)	32241200 (2)	32241200 (2)	32241200 (4)	32241200 (4)	CLIP U
17	32175564 (2)	32175564 (2)	32175564 (2)	32175564 (2)	32175564 (2)	32175564 (4)	32175564 (4)	CAPSCREW, 1/4-20X3/4"
NI	95083275 (1)	95083275 (1)	95083275 (1)	-	-	95083275 (2)	95083275 (2)	CONNECTOR, TUBE-3/4X3/4"

RECOMMENDED PARTS LIST

■ AIR COOLED AFTERCOOLER ADDITION KITS

Air cooled after cooler addition kits allow for the addition of an air cooled after cooler to your unit. Kits include front and back cover, after cooler coil, safety/relief valve, silencer, tubing and mounting hardware.

PART NUMBER	MODEL
32323354	2545E10V

The automatic drain valve removes condensed water and oil from compressed air system without restricting air flow, creating pressure drops or opening the system to the atmosphere. Its unique design maintains systems pressure and volume during operation, and increases productivity.

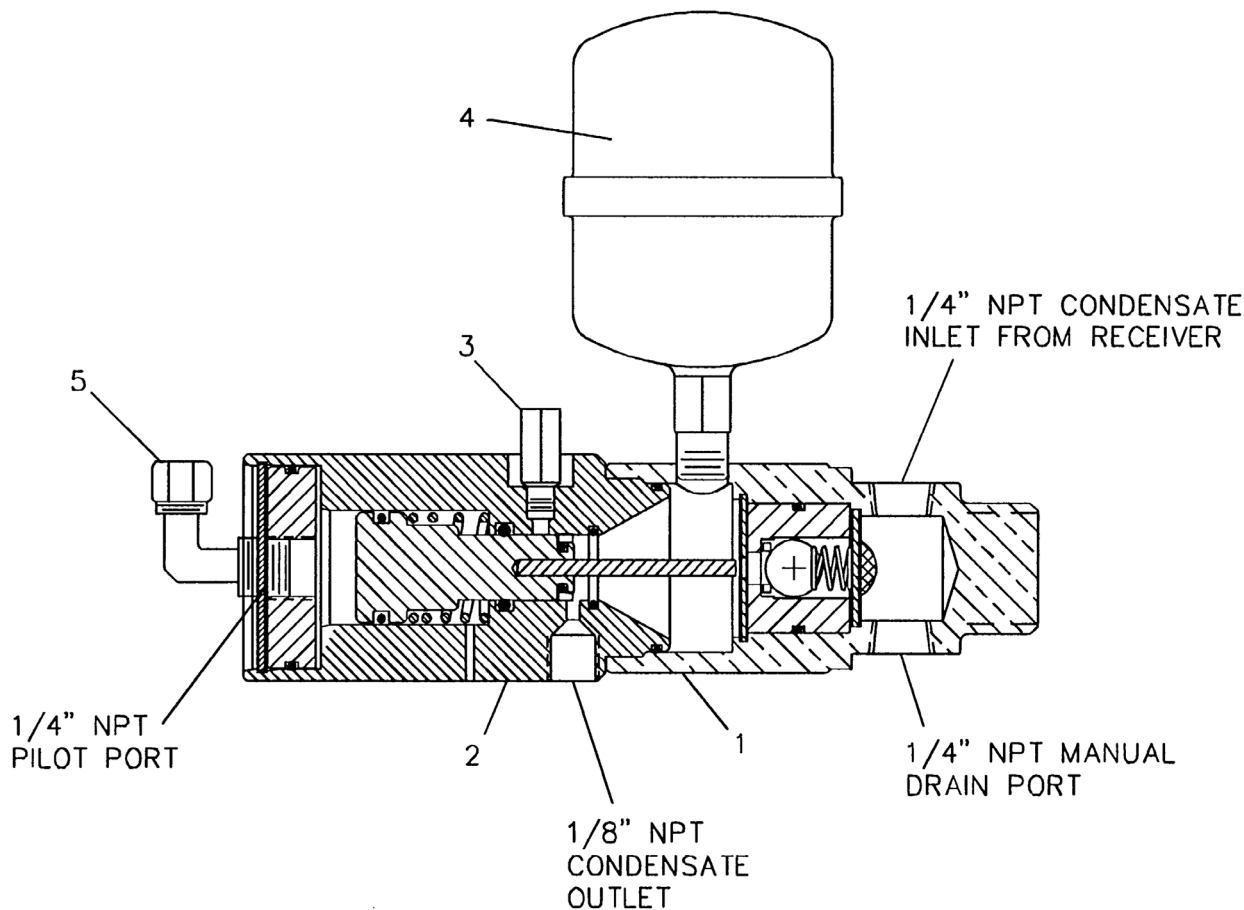
REF. NO.	PART NUMBER	DESCRIPTION
REF.	32310690	VALVE, AUTOMATIC DRAIN (SIMPLEX & DUPLEX UNITS)
1	32310971	KIT, WATER CAP ASSEMBLY
2	32296246	KIT, BODY/PISTON ASSEMBLY
3	32310997	KIT, ONE WAY VALVE
4	32496317	RESERVOIR, STANDARD CAPACITY
4	32496309	RESERVOIR, HIGH CAPACITY
5	32311060	ELBOW, TUBE-1/4"

- The high capacity reservoir gives the automatic drain valve twice as much condensate storage capacity during the pumping cycle. This larger reservoir is available as an upgrade. A larger reservoir is recommended for use on heavily-loaded simplex compressors with long pumping cycles and/or operation in extremely humid environments. If the pumping cycle exceeds one hour, then an electric timer kit should be used.

■ AUTOMATIC DRAIN VALVE TIMER KITS

- An automatic drain valve timer kit resolves application problems in which an existing automatic drain valve cycles too infrequently. A timer generates the pneumatic signals for actuating the automatic drain valve. With a timer, the automatic drain valve operates independently of the compressor upload cycles.

PART NUMBER	DESCRIPTION
47743031001	KIT, ELECTRIC DRAIN - 80 GAL VERTICAL TANK
47743032001	KIT, ELECTRIC DRAIN - 120 GAL VERTICAL TANK
47743033001	KIT, ELECTRIC DRAIN - HORIZONTAL TANKS



AUTOMATIC DRAIN VALVE REPLACEMENT PARTS.

■ AUTOMATIC DRAIN VALVE ADDITION KITS

An automatic drain valve addition kit allows you to add an automatic drain valve to simplex electric packages.

PART NUMBER	DESCRIPTION
32311219	KIT, ADDITION-AUTOMATIC DRAIN VALVE

■ MAINTENANCE PAKS

Maintenance paks contain all the parts necessary for one complete routine maintenance service of your compressor. All-season T30 select lubricant, air filter elements, gaskets, drive belts, and instructions are standard with all maintenance paks.

PART NUMBER	DESCRIPTION
38485082	PAK, MAINTENANCE-2545E10
38485082	PAK, MAINTENANCE-2545E10V

■ VIBRATION ISOLATOR PADS

Vibration isolator pads are designed to absorb 40%-60% of the sound and vibration of your compressor.

PART NUMBER	DESCRIPTION
32320681	PAD, VIBRATION ISOLATOR-4"X4" SP-NR
32320699	PAD, VIBRATION ISOLATOR-5"X5" SP-NR
32321002	PAD, VIBRATION ISOLATOR-4"X4" NRC
32321028	PAD, VIBRATION ISOLATOR-5"X5" NRC
32321010	PAD, VIBRATION ISOLATOR-6"X6" NRC

SP-NR: steel plate bonded between a NR pad and a non-skid oil-resistant ribbed neoprene top pad.

NRC: Two ribbed neoprene pads bonded to ½" cork pad.

■ CRANKCASE HEATER KITS

Crankcase heaters are recommended when ambient temperatures are consistently below 32°F (0°C). An easy-to-install external crankcase heater kit is intended for aftermarket use. Two kits may be required for some applications.

PART NUMBER	DESCRIPTION
97330385	KIT, CRANKCASE HEATER

■ COMPRESSOR LUBRICANT

All season T30 select is an all-temperature diester synthetic lubricant that is formulated for exceptional lubricant at low, normal and high operating temperatures.

PART NUMBER	DESCRIPTION
32318875	LUBRICANT, ALL SEASON T30 SELECT-QUART
32318883	LUBRICANT, ALL SEASON T30 SELECT-CASE OF 12 QUARTS

■ START-UP-KITS

Each start-up kit contains the necessary quantities of all season T30 select lubricant and air filter element(s) to start-up and maintain your compressor for the first year. Start-up kits for gasoline engine driven models also include a replacement engine air filter, engine oil filter, and engine lubricant. See the engine manufacturer's instructions for more detailed engine care information.

PART NUMBER	DESCRIPTION
32305898	KIT, START-UP

■ STEP SAVER KITS

Step saver kits provided all of the parts required to perform common repair or scheduled maintenance tasks, such as piston ring replacement or valve replacement.

PART NUMBER	DESCRIPTION	CONTENTS
32307118	32307118	valve wearing parts and head gaskets that are destroyed in replacing valve parts.
32307084	32307084	Complete set of piston rings, a crankshaft seal, and gaskets that are destroyed in breaking the unit down to replace the rings.
32204307	32204307	Set of connecting rods, main bearing, and a crankpin bushing. A gasket set is recommended with this kit.
32307126	32307126	Complete set of gaskets that are destroyed in breaking the unit down for service. Recommended with bearing/connecting rod kit or as spare gaskets.
32319477	32319477	All of the above for complete overhaul service.



A series of horizontal lines spanning the width of the page, providing a template for writing.



A series of horizontal lines spanning the width of the page, providing a template for writing.



A series of horizontal lines spanning the width of the page, providing a template for writing.

