
“Trailblazer Deluxe”

with Spring assisted level Lever System

“Trailblazer Deluxe”

with Spring assisted lever Lever System

Lever system assembly:

1. Using wood blocks, raise lift bar and remove U-bolt using open end wrench. see figure # 1
2. Attach U-bolt to bottom hole of lever and then mount lever to unit using two 5” bolts. *Remove these bolts from the tow bar mount and re-insert thru the T-shaped lever bracket and then back thru the tow bar mount. See figure # 2*

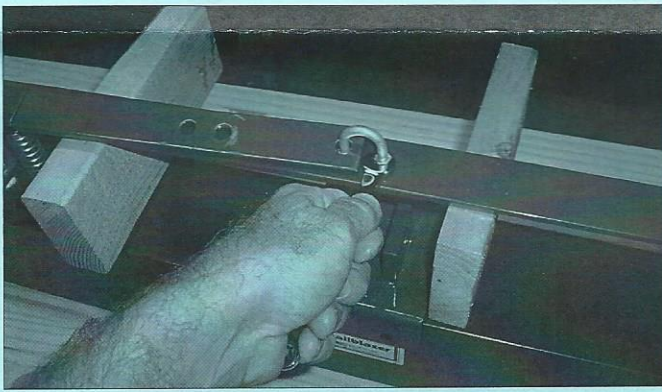


figure 1



figure 2

***The unit is now ready to be mounted on forklift or vehicle. Follow tow bar mounting instructions on other side of instruction sheet if towing behind vehicle.**

To release load: simply push lever down and debris will drop to ground. see figure # 3

When towing the Trailblazer, a pin is used to hold the release system in a raised position when releasing the load. see figure # 4 This allows the magnet to be pulled away from the debris without attracting steel particles back onto the base of sweeper. Drive away from the scrap particles and then lower magnet back into place. You're ready to start sweeping again.

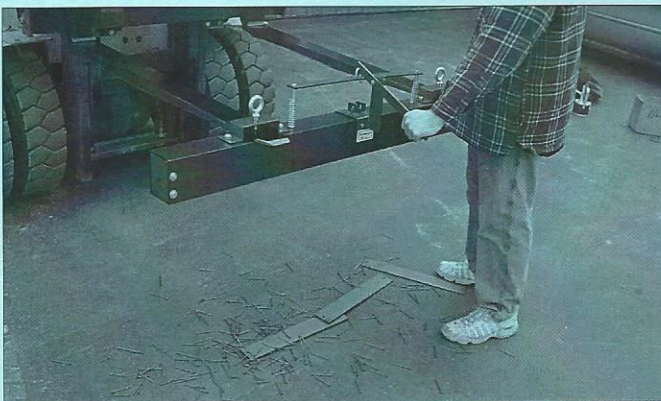


figure 3

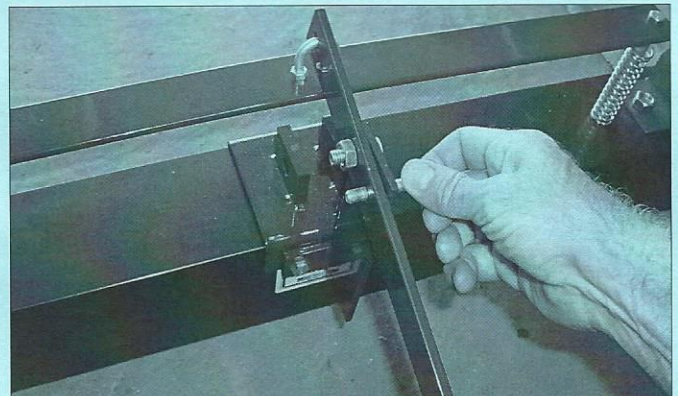
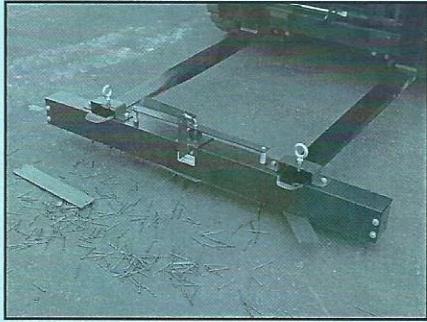


figure 4

“Trailblazer” Instructions



mount on forklift

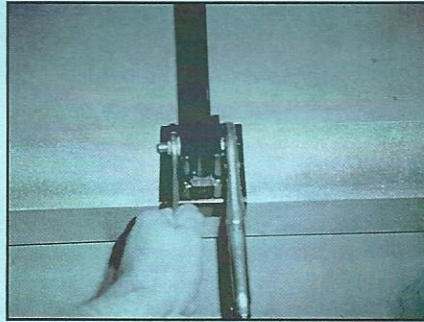


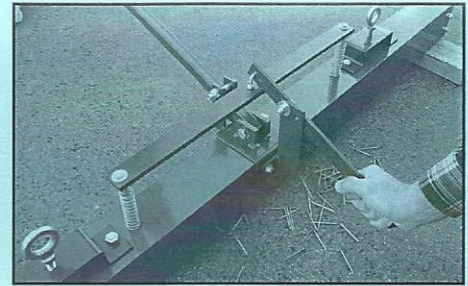
figure 2



mount on vehicle

ASSEMBLY INSTRUCTIONS FOR TOWING:

1. Mount tow bar to the sweeper (use 1/2" x 2.75" bolt) Leave the tow bar loose until the unit is connected to vehicle.
2. Mount wheels onto the end plates using 5/8" bolts.
3. After attaching the tow bar to vehicle, level out the sweeper. Lift handle to release load. When the unit is level, tighten the tow bar securely between the mounting flats. (see figure #2) **The tow bar must be attached firmly between the flat mounts or the unit will tilt back and forth while operating.**



push lever to release load

Forklift Use:

Simply center forks between mounts and tighten to unit with the eyebolts.
Operate approximately 2"-3" from ground.

Suspended from vehicle: Use chain or cable and mount sweeper 2"-3" from ground.

OPERATING INSTRUCTIONS:

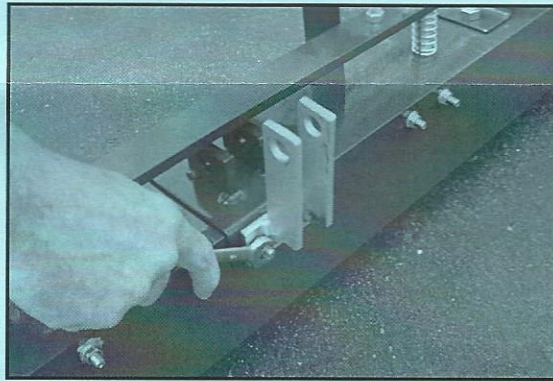
1. Recommended operating speed =3-8 mph. Depending on surface conditions. Obviously, the faster the operator drives, the less material the sweeper will attract.
2. To clean: Simply press the center handle and the unit will drop the load. Note: Some material may need to be removed manually if the release handle feels like it's "locked".

CAUTION:

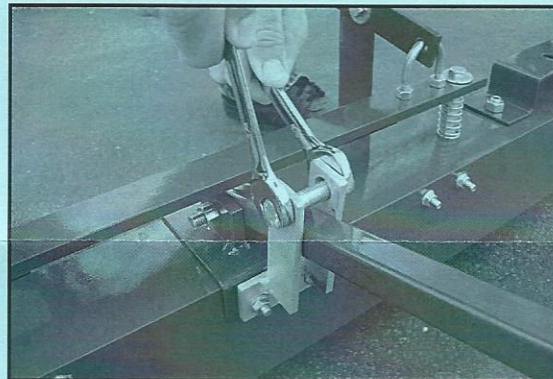
Do not exceed 10 mph when towing the sweeper.
Excessive banging from rough surfaces could damage the unit's internal magnet.

Tow Bar Clamp

We have added a tow bar clamp to prevent the unit from rotating while towing.



Mount the clamp to the unit.



Connect to the tow bar to the vehicle and level out the sweeper.
Fasten the 1/2" bolt, so the clamp tightens firmly around the tow bar.