

**ILLUSTRATED PARTS LIST**

**MODEL NUMBER HU800AWD**

**PRODUCT NUMBER 961 45 00-11**

**MFG. ID. NUMBER 96145001102**

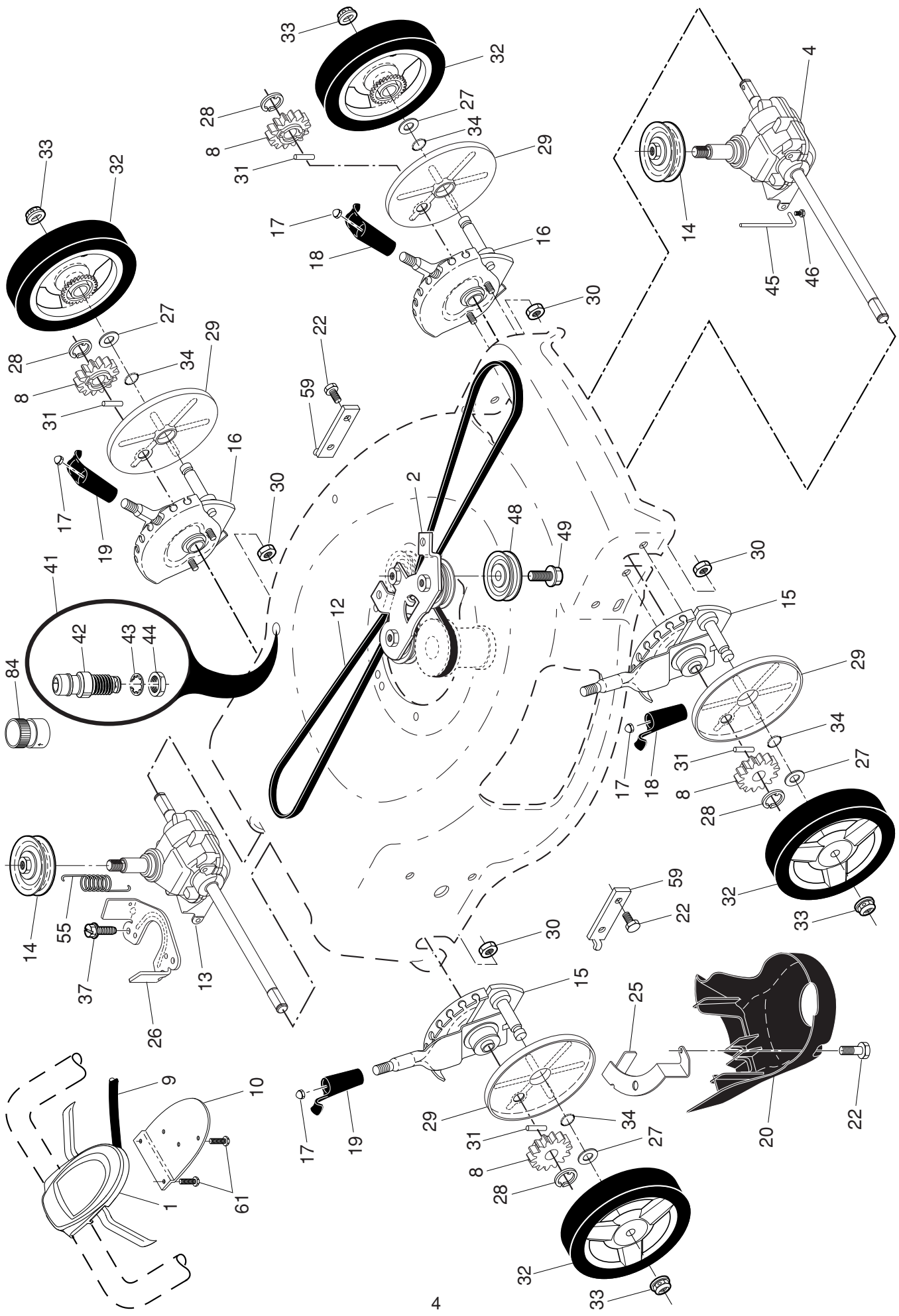


# HUSQVARNA ROTARY LAWN MOWER - MODEL NO. HU800AWD (96145001102) PRODUCT NO. 961 45 00-11

KEY NO.	PART NO.	DESCRIPTION	KEY NO.	PART NO.	DESCRIPTION
1	580 63 87-06	Upper Handle Assembly	43	532 19 17-30	Nut, Hex
2	532 42 74-97	Cable, Engine Zone Control	44	581 70 83-01	Kit, Lawn Mower Housing
3	532 43 00-34	Bracket, Upstop	45	532 17 56-50	Rod, Hinge
6	532 18 23-98	Handle Knob, Star	46	581 85 15-01	Blade Adapter / Pulley
7	532 17 88-48	Screw #10-16 x 5/8	47	580 24 40-01	Blade, 22"
8	580 84 91-02	Control Bar, Overmolded	48	532 85 10-74	Washer, Hardened
9	532 43 13-90	Rear Door Assembly	49	532 85 02-63	Washer, Helical
11	532 42 55-75	Hairpin, Door/Handle Pivot	50	532 85 10-84	Screw, Machine, Hex Head 3/8-24 x 1-3/8 Grade 8
12	532 19 19-38	Handle Knob, Standard	51	581 23 89-01	Front Baffle
13	532 43 75-16	Plug, Lower Handle Bar	53	817 00 05-10	Screw
17	581 78 21-01	Rear Baffle	56	817 41 13-12	Screw, Hex Washer Head #13 x 3/4
18	581 91 26-01	T-Knob	57	532 15 53-77	Nut, Hex
19	581 90 21-01	Rope Guide	58	532 44 11-97	Lower Handle
20	532 44 45-01	Rear Skirt	59	532 19 15-74	Handle Bolt
21	532 41 99-49	Spring, Rear Door, LH, Black	52	532 40 47-63	Decal, Warning, Cut Finger
22	532 14 18-41	Screw, Panhead, Torx #20	64	---	Engine, Honda, Model Number GCV190-LAS3L (For engine service and replacement parts, call Honda Engines at 1-800-426-7701)
24	532 41 99-48	Spring, Rear Door, RH, Grey	83	532 75 00-97	Screw, Hex Washer Head
26	532 41 99-45	Screw, Rear Door/Handle Pivot	84	532 42 81-24	Fastener, Push
28	<b>586 21 25-01</b>	Bolt, Carriage 5/16-18 x 5/8	85	532 43 45-30	Mounting Bracket, Rear Skirt
30	580 94 34-02	Grassbag	96	532 19 79-91	Clip, Cable
31	<b>585 05 47-02</b>	Frame, Grass Catcher	99	580 99 29-01	Front Shroud Assembly
32	532 44 11-92	Latch, Mulcher Door	104	580 29 00-01	Shroud, Engine
33	532 41 99-27	Mulcher Door	105	580 76 87-01	Mounting Screw, Engine Shroud
34	532 43 81-34	Bracket, Grassbag	114	581 25 36-01	Bumper, Side
36	532 17 57-35	Bracket, Hinge	115	581 33 00-01	Screw
37	584 29 94-01	Screw	117	532 42 88-67	Bolt
38	532 42 61-29	Discharge Deflector	--	115 63 54-32	Operator's Manual, English / French
39	585 90 07-03	Handle Bracket, LH	--	115 63 54-46	Operator's Manual, Spanish
40	585 90 08-03	Handle Bracket, RH			
41	532 15 04-06	Screw, Dogpoint 3/8-16 x 1-1/8			
42	532 19 30-00	Spring, Hinge			

**NOTE:** All component dimensions given in U.S. inches. 1 inch = 25.4 mm. **IMPORTANT:** Use only Original Equipment Manufacturer (O.E.M.) replacement parts. Failure to do so could be hazardous, damage your lawn mower and void your warranty.

**HUSQVARNA ROTARY LAWN MOWER - MODEL NO. HU800AWD (96145001102) PRODUCT NO. 961 45 00-11**



# HUSQVARNA ROTARY LAWN MOWER - MODEL NO. HU800AWD (96145001102) PRODUCT NO. 961 45 00-11

KEY NO.	PART NO.	DESCRIPTION	KEY NO.	PART NO.	DESCRIPTION
1	581 95 05-05	Drive Control Assembly (Includes Cable)	28	812 00 00-58	E-Ring 7/16
2	580 36 42-02	Mounting Bracket, Idler Pulleys	29	581 84 04-01	Cover, Dust, Wheel
4	585 30 57-01	Gearcase Assembly, Front, Complete	30	532 43 81-30	Nut, Hex
8	532 40 48-35	Pinion	31	532 40 48-45	Pawl, Drive
9	581 95 21-01	Cable, Drive	32	580 36 53-01	Wheel & Tire Assembly
10	532 43 27-90	Mounting Bracket, Drive Control	33	532 40 91-48	Nut, Flangelock 3/8-16
12	<b>586 07 28-02</b>	Belt, Drive	34	532 19 74-80	O-Ring
13	581 68 08-01	Gearcase Assembly, Rear, Complete	37	532 16 34-09	Screw, Hi-Lo Thread, #12 x 5/8
14	<b>586 03 84-01</b>	Pulley, Drive	41	532 43 84-89	Kit, Water Washout Assembly
15	581 75 88-01	Wheel Adjuster Assembly, RH	42	532 43 49-94	Fitting, Water Washout
16	581 75 88-02	Wheel Adjuster Assembly, LH	43	532 41 55-85	Washer, Lock, Internal Tooth
17	532 41 38-08	Pushnut	44	532 41 55-86	Locknut, Hex, with O-Ring
18	532 42 61-88	Knob, Front Wheel Adjuster	45	581 24 13-01	Belt Keeper, Gearcase, Front
19	532 42 61-89	Knob, Rear Wheel Adjuster	46	<b>584 29 94-01</b>	Screw
20	580 80 69-01	Debris Shield	48	581 90 40-01	Pulley Assembly, Idler
22	817 00 05-10	Screw, Hex Head 1/4-20	49	581 33 45-01	Screw, Mounting, Idler Pulley
25	532 42 60-65	Mounting Bracket, Debris Shield	55	581 35 13-01	Spring, Tension
26	581 15 25-02	Belt Keeper, Gearcase, Rear	59	532 44 21-13	Support Bracket
27	532 06 77-25	Washer, Flat	61	532 18 16-98	Screw
			84	532 41 64-05	Adapter, Quick-Connect Coupling

**NOTE:** All component dimensions given in U.S. inches. 1 inch = 25.4 mm. **IMPORTANT:** Use only Original Equipment Manufacturer (O.E.M.) replacement parts. Failure to do so could be hazardous, damage your lawn mower and void your warranty.