

For Service Assistance

Phone Toll Free

1-800-433-0708

**JohnDow Industries, Inc.
151 Snyder Ave.
Barberton, OH. 44203**



Air Evacuation Kit

Kit No. JDI-EK

(For Model No. JDI-LP4
Low-Profile Oil Drain)

Owners Manual



REV 10/16

Assembly Instructions & Operating Instructions

Checklist Of Components

Your air-evacuation kit was shipped with the following components. Please be sure you receive them as listed below. Contact us if anything is missing.

Item No.	Description	Qty.
1	Safety Relief Valve	1
2	10' Discharge Hose	1
3	3/4" x 2" Tank Bushing	1
4	3/4" Female Quick Coupler	1
5	3/4" Male Quick Coupler	1
6	1/4" Close Nipple	1
7	Air Pressure Regulator	1
8	3/4" x Close Nipple	1
9	2" Plug	1
10	3/4" Elbow	1

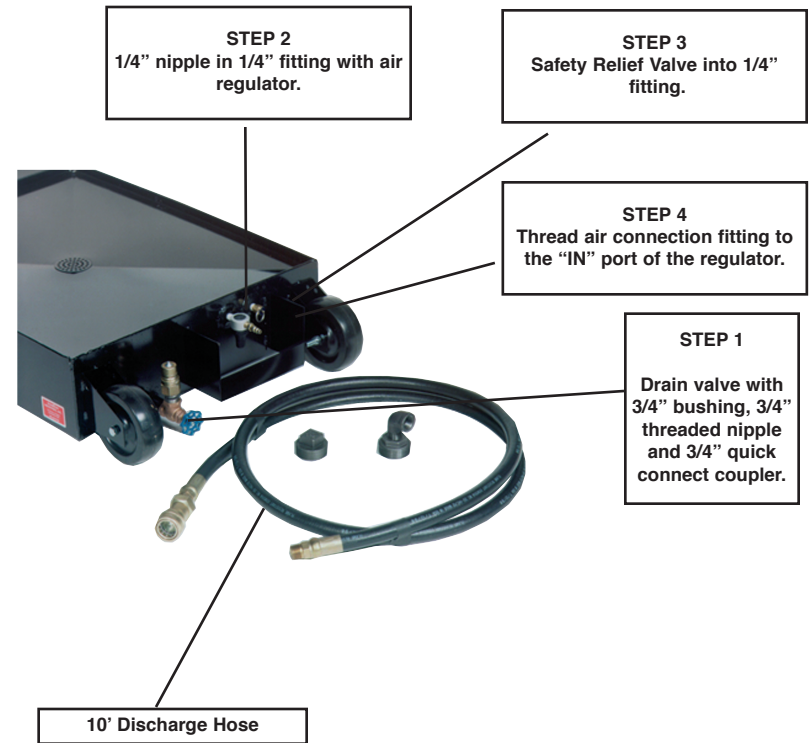
Quick Coupler Assembly - Into the 3/4" drain valve (included with oil drain) located on the back of the drain (1) thread the 3/4" x 1/2" bushing; (2) followed by the 1/2" Male Quick Coupler. See Step 1 on the illustration.

Air Regulator Assembly - Remove both of the 1/4" plugs from the 1/4" fittings on the back of the drain. Into the 1/4" fitting closest to the center of the drain (1) thread the 1/4" nipple into the 1/4" fitting; (2) followed by the Air
NOTE: "IN" maybe stamped next to air inlet port. Please refer to the air regulator instructions provided.

Safety Relief Valve - Thread the Safety Relief Valve into the other 1/4" fitting. See Step 3 on the illustration.

Discharge Hose Assembly - The discharge hose can be permanently mounted to a 2" coupling on your oil storage tank with the parts provided. (1) Thread the 2 x 3/4" bushing into any available 2" inlet on the oil storage tank.; (2) followed by the 3/4" street elbow; (3) thread one end of the discharge hose into the 3/4" street elbow; (4) attach the female quick disconnect coupler onto the other end of the discharge hose.

WARNING: Do Not Fill Tank Beyond The 2" Plug Opening If Using Evacuation Kit. Tank Will Expand When Pressurized.



Operating Instructions To Evac Drain

1. Position the oil drain next to the storage receptacle.
2. Thread the 2" plug into the 2" opening in the top center of the oil drain and the 1/4" air vent plug in the 1/4" opening in the front of the drain pan.
3. Attach the discharge hose to the quick coupler.
4. Open the drain valve by turning counter-clockwise.
5. Attach air supply to the air hose connector to begin the evacuation process.
6. When all the oil has been discharged, disconnect the air supply and close the drain valve.
7. Disconnect the discharge hose and remove the 2" plug.