



***Blackhawk
Automotive***TM

Blackhawk Automotive is a Licensed Trade Mark

Made by ©SFA Companies, Kansas City MO

Heavy Duty Hydraulic Service Jacks

Operating Instructions & Parts Manual

Model Number	Capacity
BH6025	2 ½ Ton
BH6034	3 Ton

SFA Companies ©2004
10939 N. Pomona Ave. Kansas City, MO 64153
816-891-6390
sales@blackhawk-automotive.com

- Before using this product, read this manual and follow all its Safety Rules and Operating Instructions

Made in PRC

TABLE OF CONTENTS

Warranty	P2
Save These Instructions	P3
Product Description	P3
Specifications	P3
Safety Instructions	P4
Assembly	P4
Operation	P4
Maintenance	P5
Troubleshooting	P5
Replacement Parts	P6



ONE YEAR LIMITED WARRANTY

For a period of one (1) year from date of purchase, SFA Companies will repair or replace, at its option, without charge, any of its products which fails due to a defect in material or workmanship, or which fails to conform to any implied warranty not excluded hereby.

Performance of any obligation under this warranty may be obtained by returning the warranted product, freight prepaid, to SFA Companies Warranty Service Department, 10939 N. Pomona Ave., Kansas City, MO 64153. Except where such limitations and exclusions are specifically prohibited by applicable law:

- (1) THE CONSUMER'S SOLE AND EXCLUSIVE REMEDY SHALL BE THE REPAIR OR REPLACEMENT OF DEFECTIVE PRODUCTS AS DESCRIBED ABOVE.
- (2) SFA COMPANIES SHALL NOT BE LIABLE FOR ANY CONSEQUENTIAL OR INCIDENTAL DAMAGE OR LOSS WHATSOEVER.
- (3) THE DURATION OF ANY AND ALL EXPRESSED AND IMPLIED WARRANTIES, INCLUDING WITHOUT LIMITATION, ANY WARRANTIES OF MERCHANTABILITY AND FITNESS FOR A PARTICULAR PURPOSE, IS LIMITED TO A PERIOD OF ONE (1) YEAR FROM DATE OF PURCHASE.

Some states do not allow limitations on how long an implied warranty lasts, so the above limitation may not apply to you. Some states do not allow the exclusion or limitation of incidental or consequential damages, so the above limitation or exclusion may not apply to you. This warranty gives you specific legal rights, and you may also have other rights which vary from state to state.

SAVE THESE INSTRUCTIONS

For your safety, *read, understand, and follow* the information provided with and on this jack. The owner and operator of this equipment shall have an understanding of this jack and safe operating procedures before attempting to use. The owner and operator shall be aware that use and repair of this product may require special skills and knowledge. Instructions and safety information shall be conveyed in the operator's native language before use of this jack is authorized. If any doubt exists as to the safe and proper use of this jack, remove from service immediately.

Inspect before each use. Do not use if there are broken, bent, cracked, or damaged parts (including labels). Any jack that appears damaged in any way, operates abnormally or is missing parts, shall be removed from service immediately. If the jack has been or suspected to have been subjected to a shock load (a load dropped suddenly, unexpectedly upon it), immediately discontinue use until jack has been checked by a Blackhawk authorized service center. It is recommended that an annual inspection be done by qualified personnel. Labels and Operator's Manuals are available from manufacturer.

PRODUCT DESCRIPTION

Blackhawk Hydraulic Service Jacks are designed to lift, **not** sustain, rated capacity loads. They are designed to be used in conjunction with jack stands. **Intended use:** To lift one wheel or one axle of a vehicle for the purpose of service and/or repair of vehicle components. After lifting, loads must be immediately supported by appropriately rated jack stands. Check with vehicle owner's manual for proper lift points. Always refer to the Product Label and Operator's Manual to establish rated capacity.

SPECIFICATIONS

Model	Capacity	Jack Size (L X W X H)	Min. Height	Max. Height
BH6025	2 1/2 Ton	25 3/8" x 13 1/8" x 6 1/2"	5 1/2"	19 1/2"
BH6034	3 Ton	27 1/2" x 13 3/8" x 6 3/8"	5 1/2"	19"

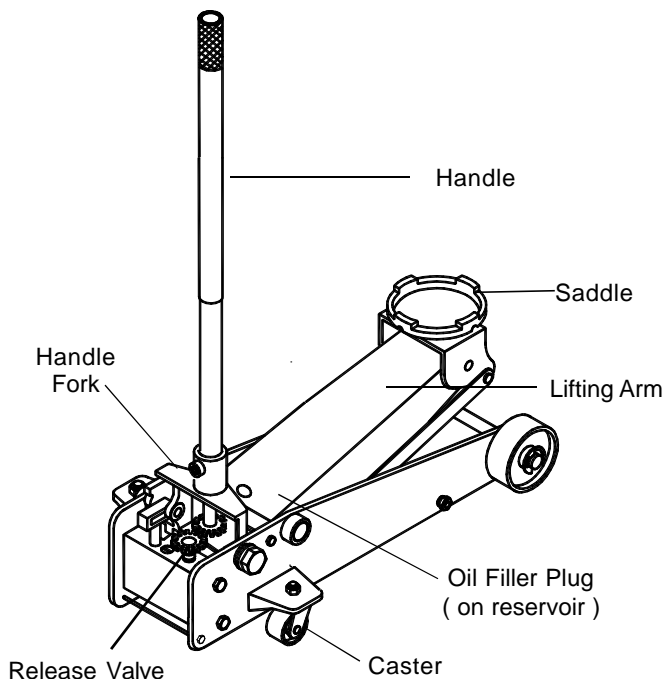


Figure 1 - Model BH6025 Components

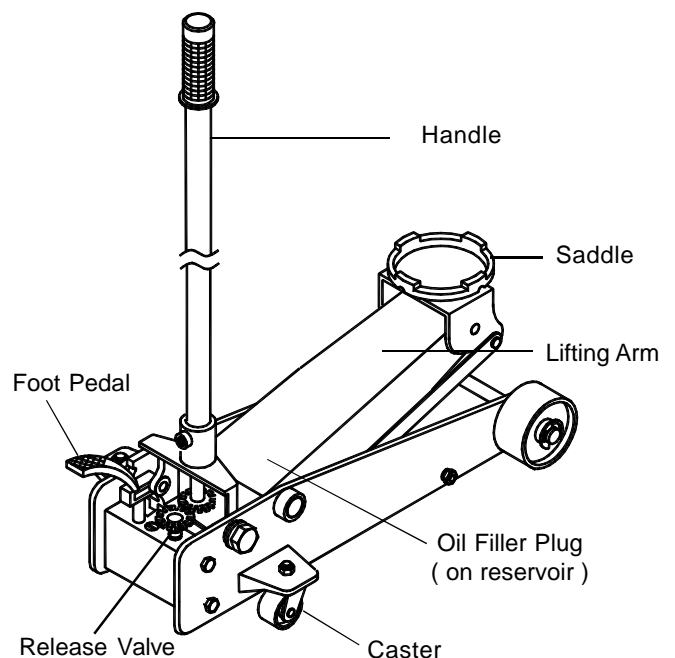


Figure 2 - Model BH6034 Components

SAFETY INSTRUCTIONS (refer to Figure 1 for location of components)

BEFORE USE

1. Verify that the product and the application are compatible, if in doubt call Blackhawk Automotive Technical Service (816) 891-6390.
2. Read the operator's manual completely and familiarize yourself thoroughly with the product, its components and recognize the potential hazards associated with its use **before** using this product.
3. Assemble handle, then secure it in the handle fork with the provided bolt. Open the release valve by turning the handle counterclockwise (no more than 2 full turns).
4. With saddle fully lowered, locate and remove the oil filler plug. Pump the handle 6 to 8 full strokes. Ensure the oil level is within ~ 3/16" from the inner cylinder as viewed from the oil filler plug. Reinstall the oil filler plug. Close release valve by turning the handle clockwise until firm resistance is felt.
5. Check to ensure that jack rolls freely, that the pump and release valve operates smoothly, raises and lowers the unloaded saddle throughout the advertised lift range before putting into service.
6. Replace worn or damaged parts and assemblies with Blackhawk Replacement Parts only. (See Replacement Parts Section). Lubricate as instructed in Maintenance Section.

⚠ WARNING



To avoid crushing and related injuries:
NEVER work on, under or around a load supported only by a jack. ALWAYS use adequately rated jack stands. Immediately transfer the load to adequately rated jack stands.

⚠ WARNING

- Study, understand, and follow all instructions provided with and on this device before use.
- Do not exceed rated capacity.
- Lift only on areas of the vehicle as specified by the vehicle manufacturer.
- Do not use adapters or accessories that are not provided initially.
- This is a lifting device only. After lifting, immediately transfer the load to appropriately rated vehicle stands.
- Never work on, under, or around a load supported by this device.
- Use only on hard, level surfaces capable of sustaining rated capacity loads.
- Do not move or dolly loads with this device.
- Do not modify this device.
- Failure to heed these markings may result in personal injury and/or property damage.

ASSEMBLY

Little, if any, assembly is required of these jacks. Always secure the handle into the handle fork by means of the bolt and lock washer provided. Tighten securely to prevent accidental removal of handle while in use. Familiarize yourself with the illustrations in the operator's manual. Know your jack and how it operates before attempting to use.

OPERATION

Lifting

1. Place vehicle in park gear, with emergency brake on and wheels securely chocked to prevent inadvertent vehicle movement.
2. Locate and close release valve by turning handle clockwise, firmly. Center jack saddle under lift point.
3. Verify lift point, then use handle pump to contact lift point. To lift, pump handle until load reaches desired height.
4. Transfer the load immediately to appropriately rated jack stands.

Lowering

1. Raise load high enough to clear the jack stands, then carefully remove jack stands (**always** used in pairs).

ADVERTENCIA

- Leer, comprender, y seguir las instrucciones antes de utilizar el aparato.
- El manual de instrucciones y la información de seguridad deben estar comunicados en lengua del operador antes del uso.
- No seguir estas indicaciones puede causar daños personales o materiales.

! Safety Messages !

Be sure all tools and personnel are clear before lowering load. Only attachments and/or adapters supplied by the manufacturer shall be used. Lift only on areas of the vehicle as specified by the vehicle manufacturer.

2. Slowly turn the handle counterclockwise, but no more than 1/2 turn.

If the load fails to lower:

- a. Use another jack to raise the vehicle high enough to reinstall jack stands.
- b. Remove the malfunctioning jack and then the stands.
- c. Using the functioning jack, lower the load by turning the operating handle counterclockwise, but no more than 1/2 turn.

MAINTENANCE

Important: Use only a good grade hydraulic jack oil. Avoid mixing different types of fluid and **Never** use brake fluid, turbine oil, transmission fluid, motor oil or glycerin. Improper fluid can cause failure of the jack and the potential for sudden and immediate loss of load. We recommend Hein-Werner HW93291 hydraulic oil or equivalent.

Adding oil

1. With saddle fully lowered set jack in its upright, level position. Locate and remove oil filler plug.
2. Fill with oil until ~3/16" above the inner cylinder as seen from the oil filler plug hole. Reinstall the oil filler plug.

Changing oil

For best performance and longest life, replace the complete fluid supply at least once per year.

1. With saddle fully lowered, remove the oil filler plug.
2. Lay the jack on its side and drain the fluid into a suitable container.

Note: Dispose of hydraulic fluid in accordance with local regulations.

3. Fill with oil until ~3/16" above the inner cylinder as seen from the oil filler plug hole. Reinstall the oil filler plug.

Lubrication

A coating of light lubricating oil to pivot points, axles and hinges will help to prevent rust and assure that wheels, casters and pump assemblies move freely.

Cleaning

Periodically check the pump piston and ram for signs of rust or corrosion. Clean as needed and wipe with an oily cloth.

Note: Never use sandpaper or abrasive material on these surfaces !

Storage

When not in use, store the jack with saddle fully lowered.

TROUBLESHOOTING

Symptom	Possible Causes	Corrective Action
Jack will not lift load	<ul style="list-style-type: none"> • Release valve not tightly closed 	<ul style="list-style-type: none"> • Ensure release valve tightly closed
Jack bleeds off after lift	<ul style="list-style-type: none"> • Release valve not tightly closed • Hydraulic unit malfunction 	<ul style="list-style-type: none"> • Ensure release valve tightly closed • Contact Blackhawk Tech. Service
Jack will not lower after unloading	<ul style="list-style-type: none"> • Reservoir overfilled • Linkages binding 	<ul style="list-style-type: none"> • Drain fluid to proper level • Clean and lubricate moving parts
Poor lift performance	<ul style="list-style-type: none"> • Fluid level low • Air trapped in system 	<ul style="list-style-type: none"> • Ensure proper fluid level • With ram fully retracted, remove oil filler plug to let pressurized air escape, reinstall oil filler plug
Will not lift to full extension	<ul style="list-style-type: none"> • Fluid level low 	<ul style="list-style-type: none"> • Ensure proper fluid level

REPLACEMENT PARTS

Available Parts: Please refer to the Parts drawing when ordering parts. Not all components of the jack are replacement items, but are illustrated as a convenient reference of location and position in the assembly sequence. When ordering parts, give Model number, serial number and description on page 7 & 8. Call or write for current pricing: SFA Companies 10939 N. Pomona Ave. Kansas City, MO 64153, U.S.A. Tel:(816)891-6390 Fax:(816)891-6599 E-Mail: sales@blackhawk-automotive.com

Item #	Part #	Description	Qty.
1	F361-30030-0000	Oil Filler Plug	1
2	G489-40003-1000	Release Valve Gear	1
3	G489-10002-0421	Lift Arm Return Spring	1
4	G95L-12000-0000	Saddle	1
5	G48900-0006	Rear Caster Assembly	2
6	G48900-0005	Front Wheel Assembly	2
7	G48900-0004	Handle Assembly	1
8	G48900-0007	Hydraulic Unit	1
9	G489-20008-0410	Handle Fork Return Spring	1
10	G48900-0003	Handle Fork Assembly	1
-	G48900-0002	Repair Kit	-
-	BH6025-L0	Label(s) (not shown)	-
-	BH6025-M0	Manual	1

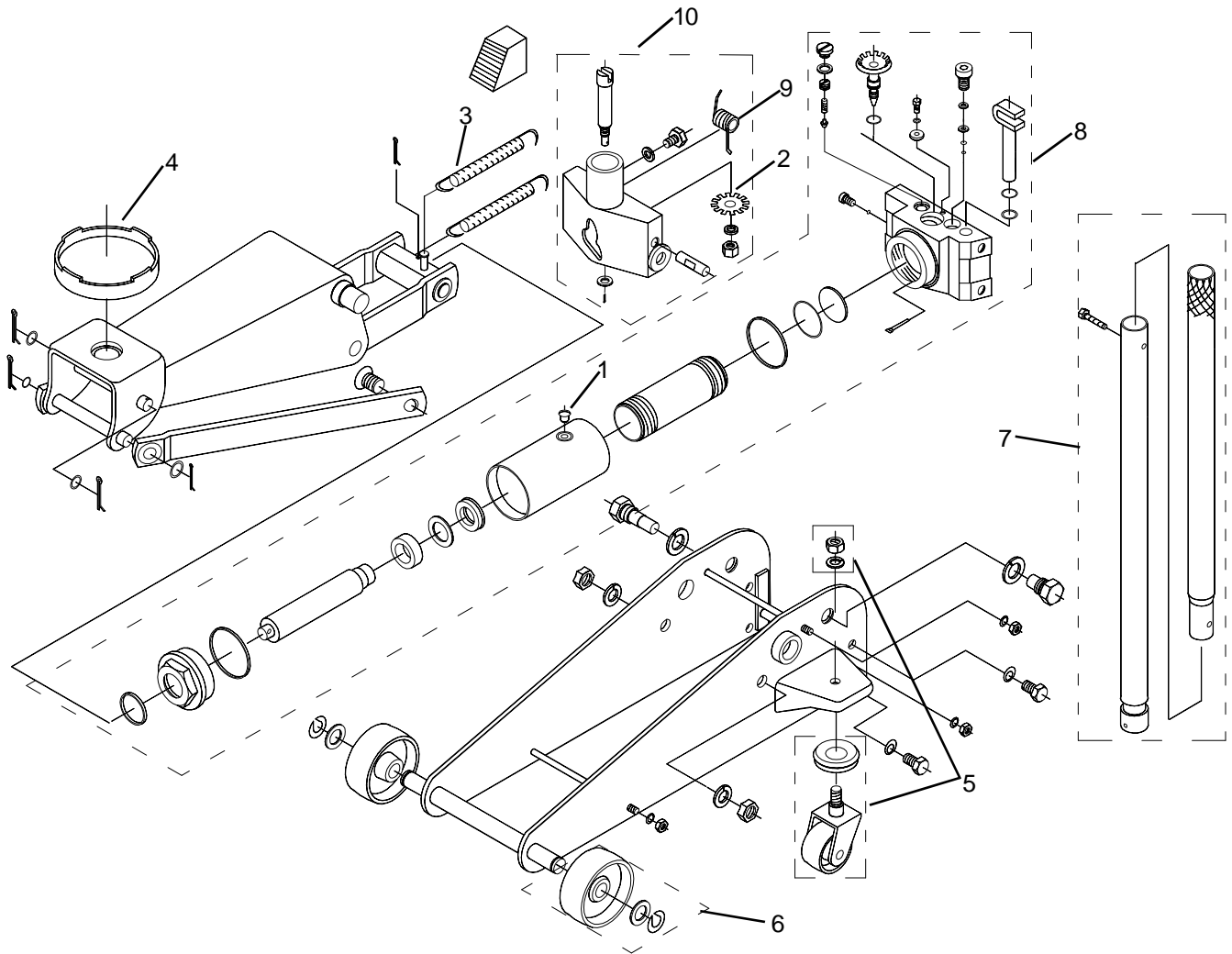


Figure 3 - Replacement Parts Illustration for Model BH6025

Item #	Part #	Description	Qty.
1	590-5-0010-0000	Oil Filler Plug	1
2	G93-1-0800-2000	Release Valve Gear	1
3	G93-1-0000-3000	Lift Arm Return Spring	1
4	G93-P-0100-0000	Saddle	1
5	G931-05000-000	Rear Caster Assembly	2
6	G931-00005-000	Front Wheel	2
7	G89-0-9003-7K03	Handle Assembly	1
8	G93-P-0000-1000	Foot Pedal	1
9	G49-3-0200-000	Complete Hydraulic Unit	1
10	G93-1-0000-3000	Handle Fork Return Spring	1
-	BH6034-L0	Label(s)(not shown)	1
-	BH6025-M0	Manual	1

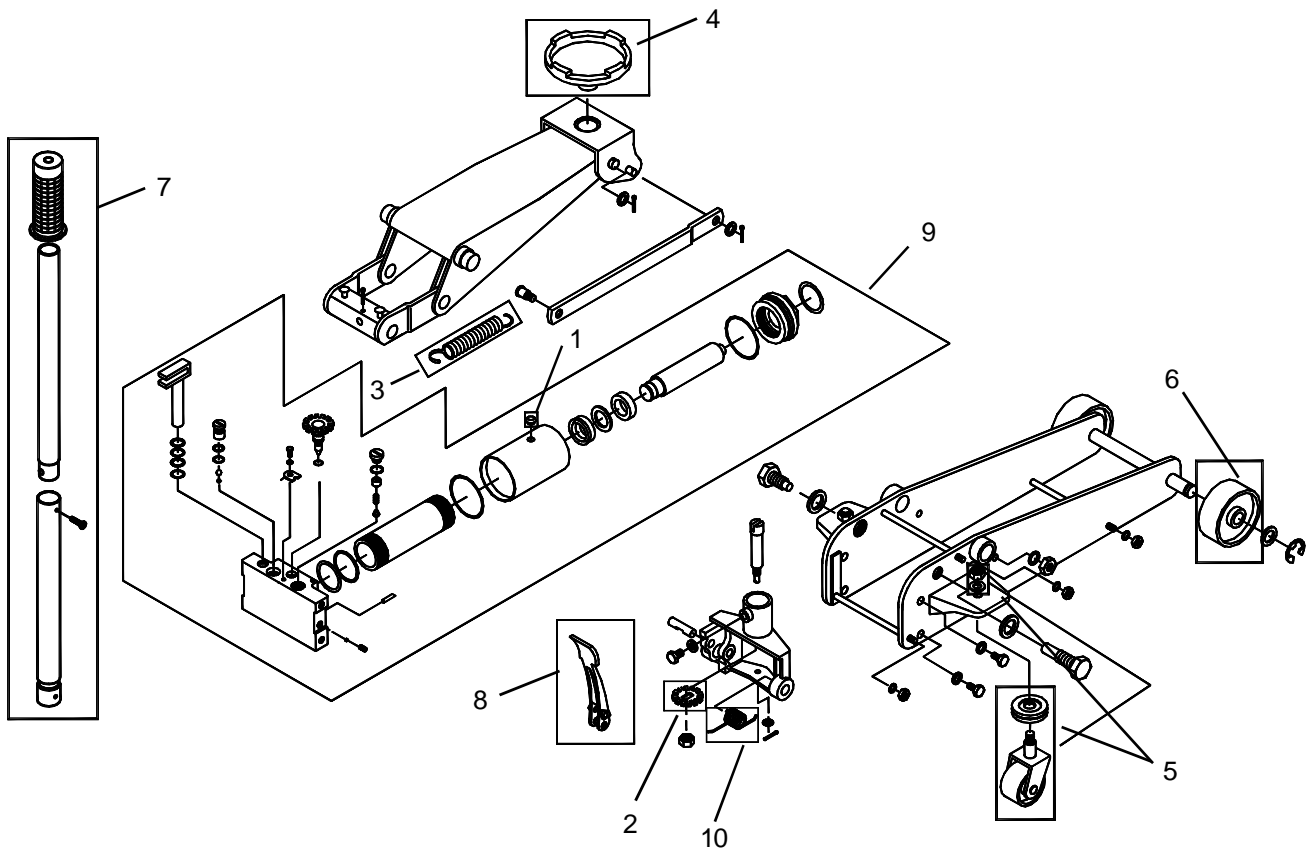


Figure 4 - Replacement Parts Illustration for Model BH6034