

**Genie Industries**



# **Genie® Instruction Sheet**

---

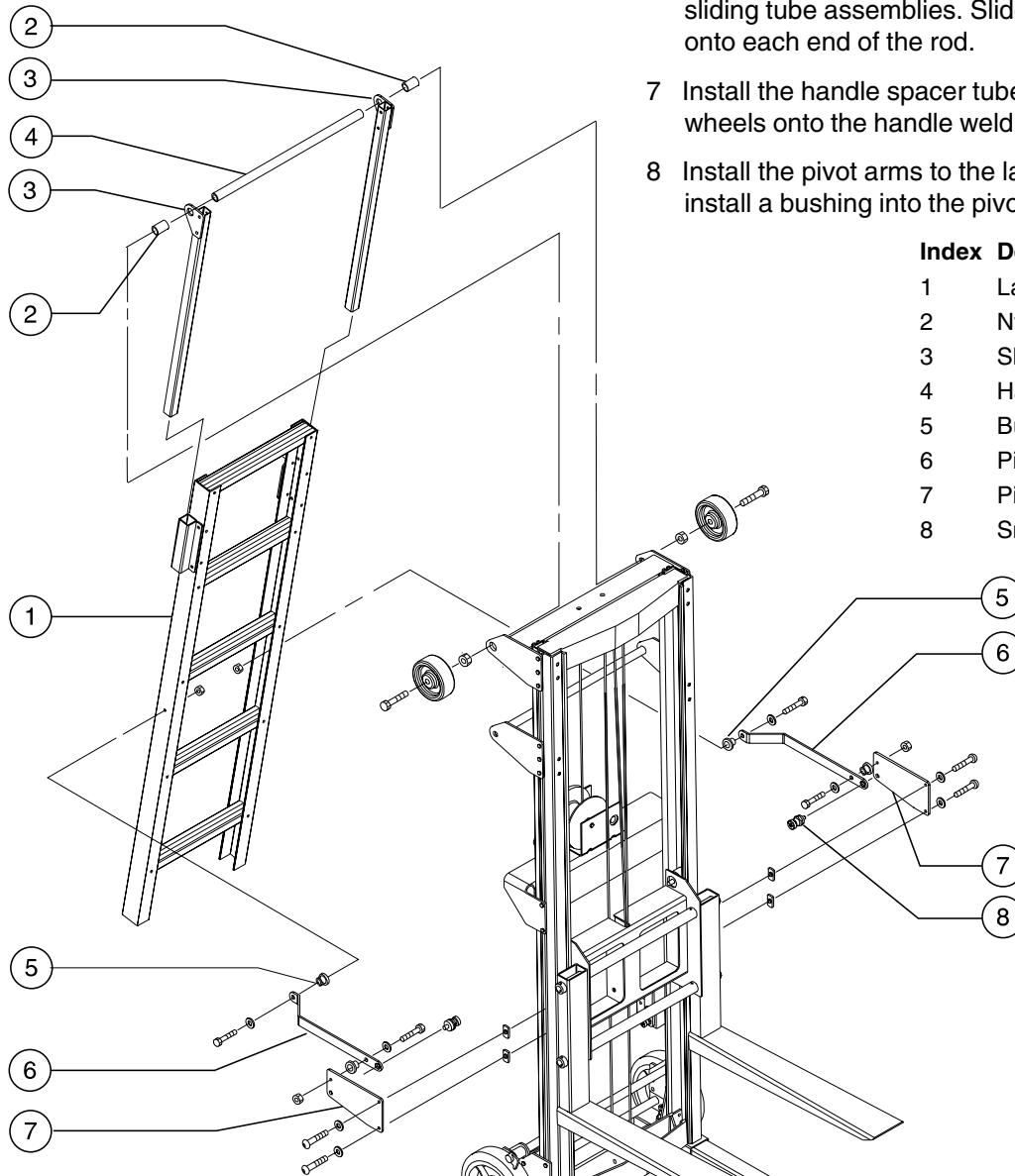
## **Ladder Option Installation**

First Edition, First Printing  
Part No. 37172



## Ladder Option Installation Instructions

- 1 Mount a pivot plate to each side of the outer frame. Use the weld nut contained in the channel and the bolts included in the kit. Do not tighten the fasteners. Be sure the decals face away from the machine.
- 2 Measure 20 inches up from the bottom of the outer channel and place a mark there. Position the pivot plates with the bottom of the plate on the mark. Tighten the mounting fasteners.
- 3 Install a pivot arm and a snap pin to each pivot plate. Be sure to install a bushing into the pivot arm.
- 4 Install the sliding tube assemblies into the ladder.
- 5 Remove the mounting fasteners from the loading wheels. Then remove the handle spacer tube.
- 6 Slide the handle spacer tube through the ladder sliding tube assemblies. Slide a nylon spacer onto each end of the rod.
- 7 Install the handle spacer tube and loading wheels onto the handle weldment.
- 8 Install the pivot arms to the ladder. Be sure to install a bushing into the pivot arm.



Index	Description
1	Ladder
2	Nylon spacer
3	Sliding tube assembly
4	Handle spacer tube
5	Bushing
6	Pivot arm
7	Pivot plate
8	Snap pin