



Poly and Steel Strapping Cart

OWNER'S MANUAL



WARNING:

Read carefully and understand all **INSTRUCTIONS** before operating. Failure to follow the safety rules and other basic safety precautions may result in serious personal injury.

Item #143460

Thank you very much for choosing a NORTHERN TOOL + EQUIPMENT CO., INC. Product!
For future reference, please complete the owner's record below:

Model: _____ Purchase Date: _____

Save the receipt, warranty and these instructions. It is important that you read the entire manual to become familiar with this product before you begin using it.

This machine is designed for certain applications only. Northern Tool + Equipment cannot be responsible for issues arising from modification. We strongly recommend this machine is not modified and/or used for any application other than that for which it was designed. If you have any questions relative to a particular application, DO NOT use the machine until you have first contacted Northern Tool + Equipment to determine if it can or should be performed on the product.

For technical questions please call **1-800-222-5381**.

For use with steel and poly strapping

- **Width: 16"x3", 16"x6" and 8"x8" steel or poly strapping.**

ASSEMBLY AND OPERATION INSTRUCTION

1. Use washer (#21) and split pin (#17) to fix 2pcs wheels (#3) on the body frame (#1) ;
2. Use washer (#21) and split pin (#17) to fix plate (#2) on the body frame (#1) ;
3. Use M6x45 Bolt (#20) , nut (#19) , big spring (#8), M10x45 bolt (#9) , nut (#11) and fixed tube (#10) to make the brake system fix on the body frame (Ref. Fig1, Fig2, Fig3);

Note: Brake system includes brake shaft (#12), brake bracket (#7), 5pcs rubber blocks (#22), blocks (#13, #14, #15), and 2pcs small springs (#18).



Fig.1

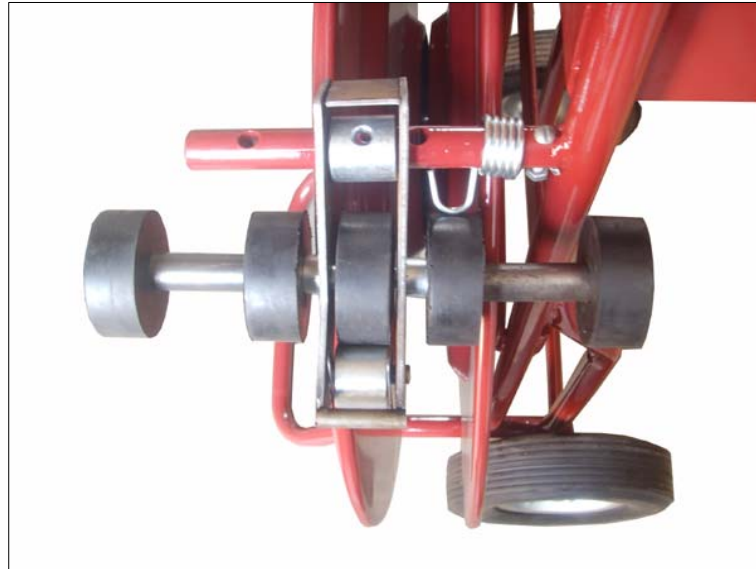


Fig.2

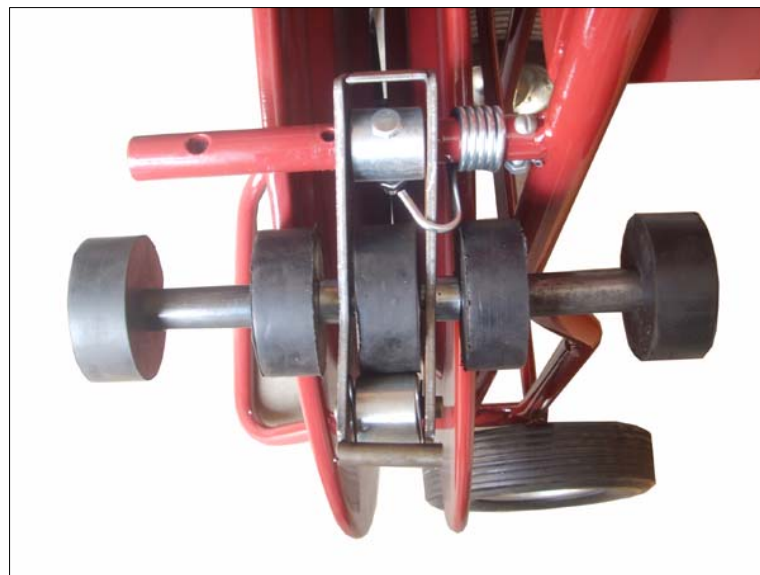


Fig.3

4. Mount 16"x3" strapping;
5. Mount plate (#4) , and use nut (#6) to fix;
6. If operator wants to mount 16"x6" or 8"x8" strapping, please conform the following instructions:
 - (1) Connect the long thread shaft(#5)with the plate; Adjust the long thread shaft to suitable place ; Then use M6x10 bolt (#23) to fix (Ref. Fig4);

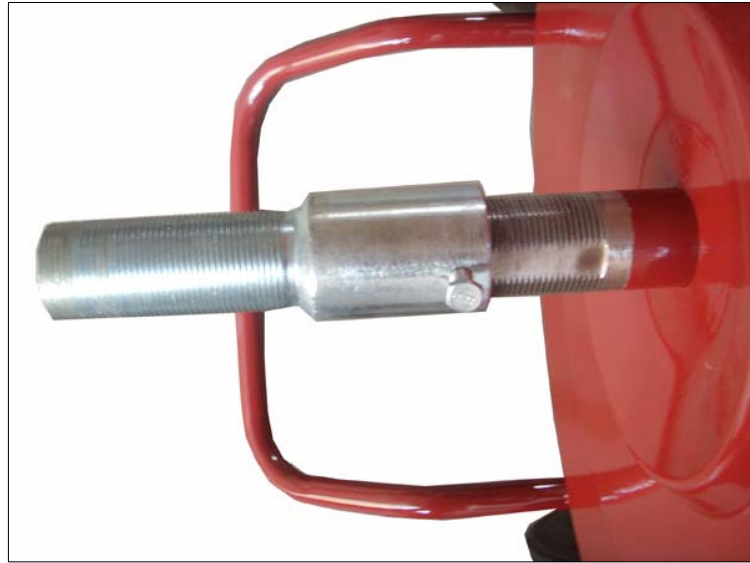


Fig.4

(2) Adjust the brake system position (Ref. Fig5);

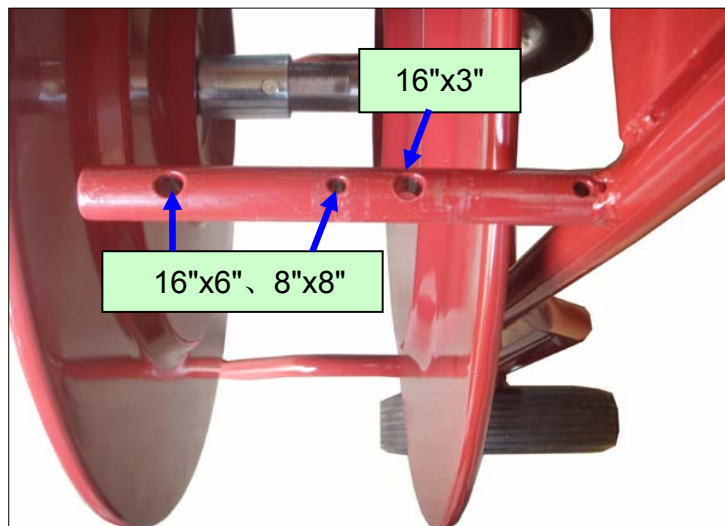
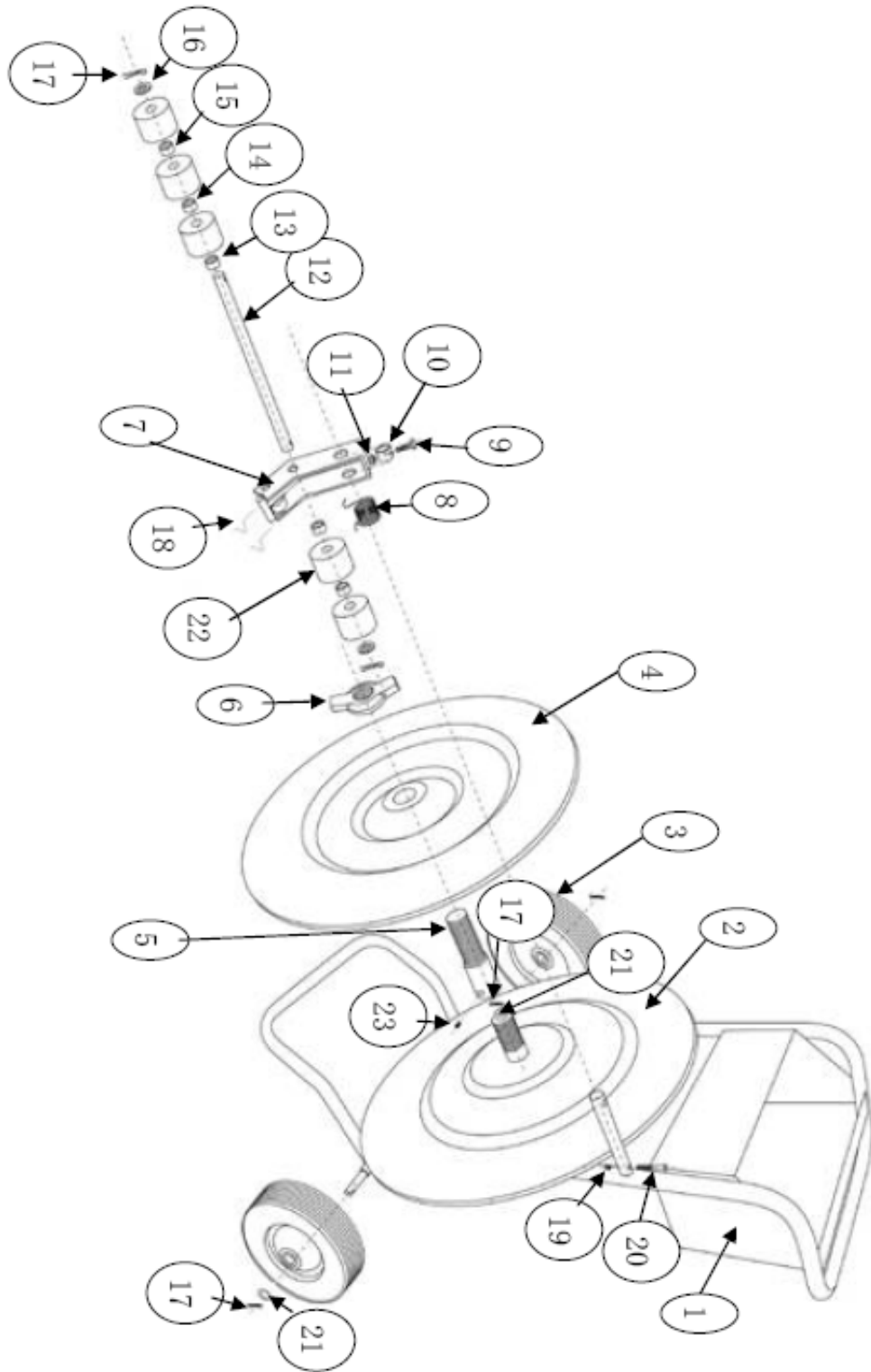


Fig.5

(3) Mount 16"x6" or 8"x8" strapping;

(4) Mount plate (#4) and use nut (#6) to fix.

DIAGRAM & PARTS LIST



Part#	Description	Qty.	Part#	Description	Qty.
1	Body Frame	1	13	φ12x5 block	2
2	Plate	1	14	φ12x10 block	2
3	Wheel	2	15	φ12x50 block	2
4	Plate	1	16	φ12 Washer	2
5	Long thread shaft	1	17	φ3 split pin	4
6	Nut	1	18	Small spring	2
7	Brake holder	1	19	M6 Nut	1
8	Big spring	1	20	M6x45 Bolt	1
9	M10x45 Bolt	2	21	φ16 Washer	3
10	Fixed tube	2	22	Rubber Block	5
11	M10 Nut	1	23	M6x10 Bolt	1
12	Brake shaft	1			



WARNING

Some dust created by power sanding, sawing, grinding, drilling, and other construction activities contains chemicals known to the State of California to cause cancer, birth defects or other reproductive harm. Some examples of these chemicals are:

- lead from lead-based paints,
- crystalline silica from bricks and cement and other masonry products, and
- arsenic and chromium from chemically-treated lumber.

Your risk from these exposures varies, depending on how often you do this type of work. To reduce your exposure to these chemicals: work in a well ventilated area, and work with approved safety equipment, such as those dust masks that are specially designed to filter out microscopic particles.



Northern Tool + Equipment Co.,
2800 Southcross Drive West
P.O. Box 1499 Burnsville, MN 55337-0499
Made in China.