

! WARNING

Some dust created by power sanding, sawing, grinding, drilling, and other construction activities contains chemicals known to the State of California to cause cancer, birth defects or other reproductive harm. Some examples of these chemicals are:

- Lead from lead-based paints
- Crystalline silica from bricks and cement and other masonry products, and arsenic and chromium from chemically-treated lumber.

Your risk from these exposures varies, depending on how often you do this type of work. To reduce your exposure to these chemicals: work in a well ventilated area, and work with approved safety equipment, such as those dust masks that are specially designed to filter out microscopic particles.



Northern Tool + Equipment Co.,
2800 Southcross Drive West
P.O. Box 1499 Burnsville, MN 55337-0499
Made in China



ATV LOG-SKIDDING ARCH & HOLDER OWNER'S MANUAL



! WARNING

Read carefully and understand **RULES FOR SAFE OPERATION** and instructions before operating. Failure to follow the safety rules and other basic safety precautions may result in serious personal injury.

ITEM#119010

Thank you very much for choosing a NORTHERN TOOL + EQUIPMENT CO., INC., Product! For future reference, please complete the owner's record below:

Model: _____ Purchase Date: _____

Save the receipt, warranty and these instructions. It is important that you read the entire manual to become familiar with this product before you begin using it.

This machine is designed for certain applications only. Northern Tool + Equipment strongly recommends this machine is not modified and/or used for any application other than that for which it was designed. If you have any questions relative to a particular application, DO NOT use the machine until you have first contacted Northern Tool + Equipment to determine if it can or should be performed on the product.

For technical questions and replacement parts, please call 1-800-222-5381.

Features and Technical Specifications:

Handle logs up to 20-ft. long, 24" diameter and 1000 lbs.
 Wheels: Four 16" x 6.50-8 pneumatic turf tires
 Coupler: 1-7/8" ball, 2" channel, rated capacity 2000 lbs.

⚠ WARNING: The warnings, cautions, and instructions discussed in this instruction manual cannot cover all possible conditions or situations that could occur. It must be understood by the operator that common sense and caution are factors which cannot be built into this product, but must be supplied by the operator.

⚠ WARNING: Do not handle logs over 20-ft. long, 24" diameter or 1000 lbs.

ASSEMBLY

1. Use Sleeves (#17) to connect the Left Arm (#4) and Right Arm (#8) together, and fix with Hex Bolt (#7), Nut (#11), Spring Washer (#10) and Flat Washer (#6).
2. Attach the Pulling Rod (#9) to the Left/Right Arm (#4, #8) and Towing Tongue (#14). Secure with Hex Bolt (#7, #15), Nut (#11), Spring Washer (#10) and Flat Washer (#6).
3. Use Sleeves (#17) to connect the Front Arms (#13) to the Left/Right Arm (#4, #8), and also attach the Mud Removers (#18) to the Sleeves (#17), then fix with Hex Bolt (#12), Nut (#11), Spring Washer (#10) and Flat Washer (#6).
4. Attach the Front Arms (#13) to the Towing Tongue (#14), and fix with Hex Bolt (#15), Nut (#11), Spring Washer (#10) and Flat Washer (#6).
5. Attach the Front Wheels (#2) to the Left Arm (#4) and Right Arm (#8), and secure with Axle (#3), Flat Washer (#16) and Nut (#1).
6. Attach the Rear Wheels (#22) to the Rear Log Holder (#24) and secure with Bolt (#20) and Washer (#21).
7. Connect the ATV Log-Skidding Arch & Holder to your ATV with the Coupler (#19) provided.

OPERATION:

1. Place the log under the Skidding Arch, and hold the end of log with Timber jack (not provided).
2. Wrap the log with Front Chain (#5) and fix it with the lock of the chain. See Fig. A.
3. Hold the other end of the log with timber jack (not provided) to load it on to the Rear Log Holder (#24);
4. Wrap the log with Rear Chain (#23) and fix it with the lock of the chain. See Fig. B.



Fig. A

NOTE: Logs will be easier to move and stay mud free with less snagging if you use the Rear Log Holder (#24) to hold the logs. However, if the transporting distance is short, or the log is not big, you can use the Log Skidding Arch alone to hold and skid the log.

MAINTENANCE

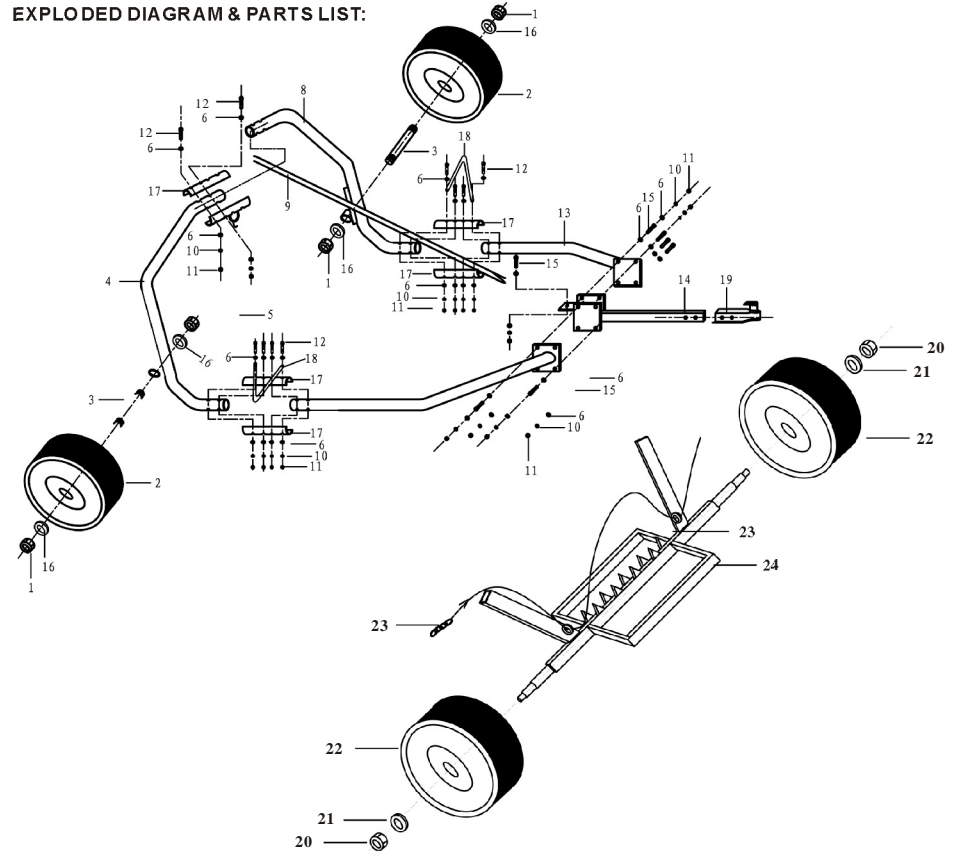
1. It is recommended that the general condition the product be examined before it is used. Keep the product in good repair by adopting a program of conscientious repair and maintenance in accordance with the recommended procedures found in this manual. If any damage or wear is noted, have the problem corrected before further use. Have necessary repairs made by qualified service personnel.



Fig. B

2. Before using, make sure all the Bolts & Nuts have been secured.
3. The products should be cleaned with a dry and soft cloth. Many household cleaners can weaken the materials.
4. Keep the product dry. Prevent exposure to water or corrosive materials, which may rust or damage components of the Log-Skidding Arch & Holder.
5. When not in use, store the product in a safe area out of reach of children and unauthorized persons.
6. Occasionally apply some light oil to screw threads to prevent rust.

EXPLODED DIAGRAM & PARTS LIST:



Part No.	Description	Qty.
1	Nut M20	4
2	16" Front Wheel	2
3	Axle	2
4	Left Arm	1
5	Front Chain	1
6	Flat Washer	48
8	Right Arm	1
9	Pulling Rod	1
10	Spring Washer	25
11	Nut M10	23
12	Hex Bolt M10x75	14
13	Front Arm	2

Part No.	Description	Qty.
14	Towing Tongue	1
15	Hex Bolt M10x30	11
16	Flat Washer	4
17	Sleeve	6
18	Mud Remover	2
19	Coupler	1
20	Nut M20	2
21	Washer M20	2
22	16" Rear Wheel	2
23	Rear Chain	1
24	Rear Log Holder	1