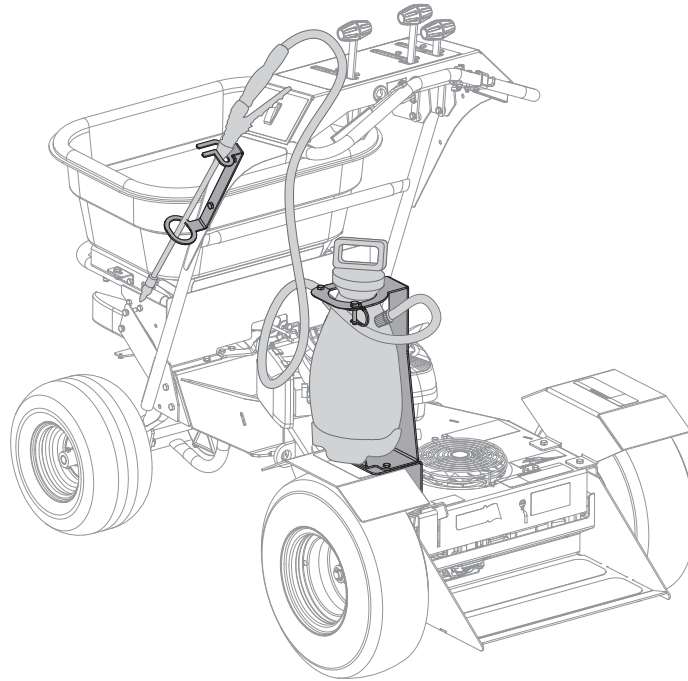




OPERATOR'S MANUAL

KSP17-SSB1 Spot Spray Mounting Kit



Spyker Spreaders

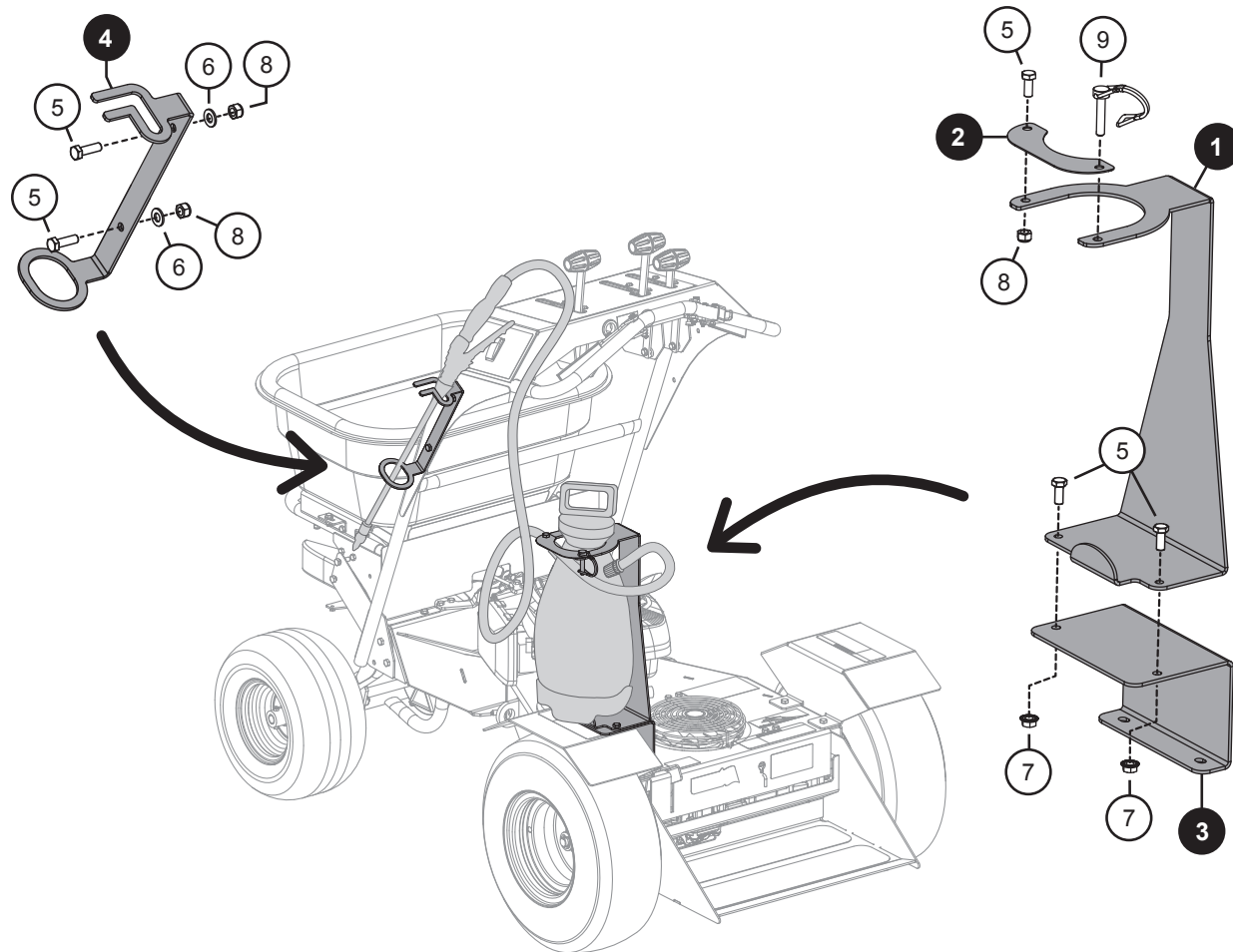
Contact us at 800.972.6130
www.spyker.com

▲ IMPORTANT

**This manual contains information for the safety of persons and property.
Read it carefully before assembly and operation of the equipment!**

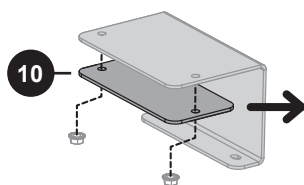
Parts

DO NOT RETURN PRODUCT IF YOU ARE MISSING PARTS. PLEASE CALL: 1 (800) 972-6130



No.	Part #	Description	Qty
1	1019580-10	Spot Sprayer Bracket	1
2	1019609-10	Collar Bracket	1
3	1019602-10	Fender Shelf Bracket	1
4	1019586-10	Wand Guide	1
10	1019736	Fender Spacer; (Optional)	1

1019587		Hardware Bag	1
5	2M1012P	Bolt; Hex Head, 5/16" x 3/4"	5
6	45M1111P	Washer; Flat, 5/16"	2
7	B-4355	Nut; Whiz Lock, 5/16" -18	2
8	B-4786	Nut; Nylon Lock, 5/16" -18	3
9	1019612	Clevis Pin; Wire-Lock	1



Optional Fender Spacer

This part is not necessary for all models, but it has been included as a spacer for the fender.

KSP17-SSB1 - Designed for use with Spyker and Lesco Ride-On Spreaders while attaching a Lesco 2 Gallon Sprayer or Smith Max 2 Gallon Sprayer.
(Models: 190594, 190596 & 190216)

Assembly

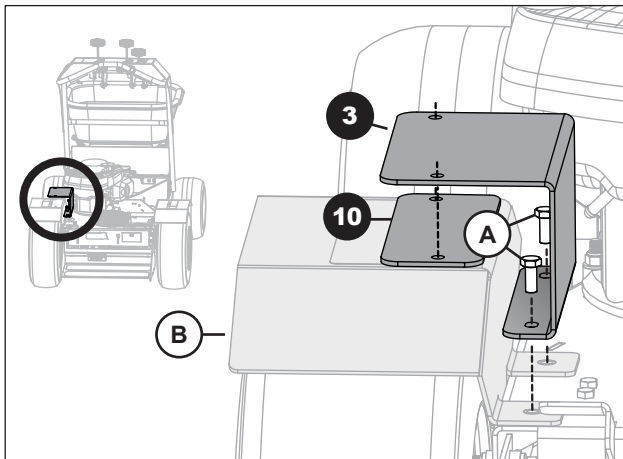
NOTE: The back left tire can be removed for ease of assembly on steps 1-3, however, it is not necessary.

1. Attaching the Sprayer Bracket

On your Spreader: Find and temporarily remove the two bolts (A) at the base of your left fender (B).

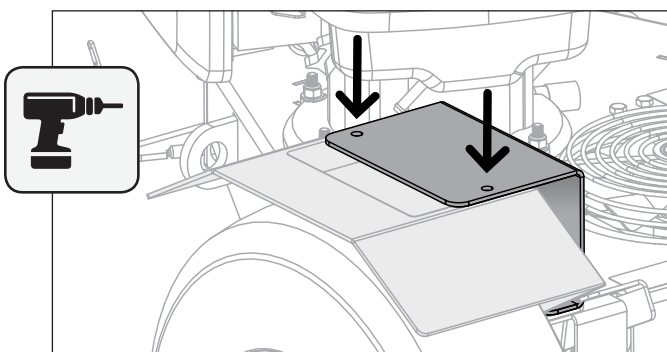
Align the new fender shelf bracket (3) at this location as illustrated. *NOTE: If there appears to be a gap between the fender and bracket, an optional fender spacer (10) has been provided.*

Secure with the same two bolts (A) that originally held the fender in place.



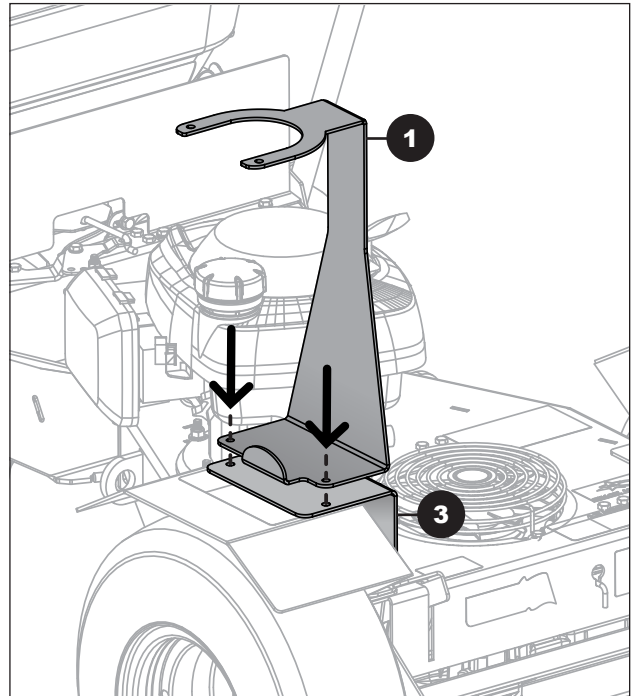
2. Protect your tire: Slide a temporary protective barrier between the tire and fender.

Using the fender shelf bracket (3) as a guide, drill the two holes using a 21/64" (or 3/8") drill bit.



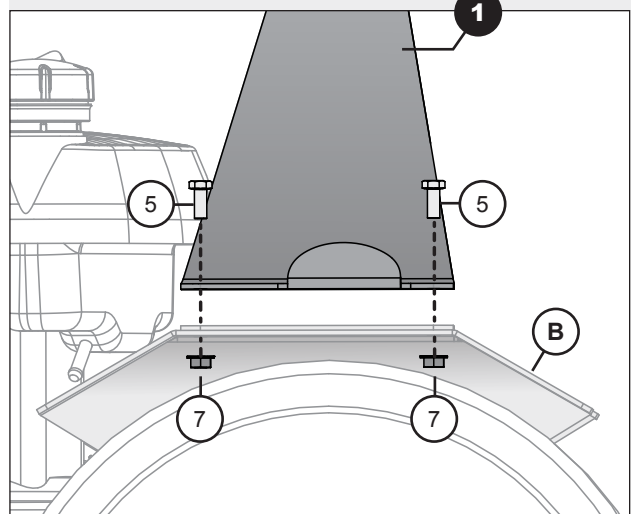
NOTE: Newer ROS models will already have these holes and drilling will be unnecessary.

3. Align the openings at the base of the spot sprayer bracket (1) with the fender shelf bracket (3) as illustrated below.



To secure these two brackets (1 & 3) to your spreader fender (B), run two 5/16" x 3/4" Hex Head Bolts (5) through and secure below with a 5/16"-18 Whiz Lock Nut (7).

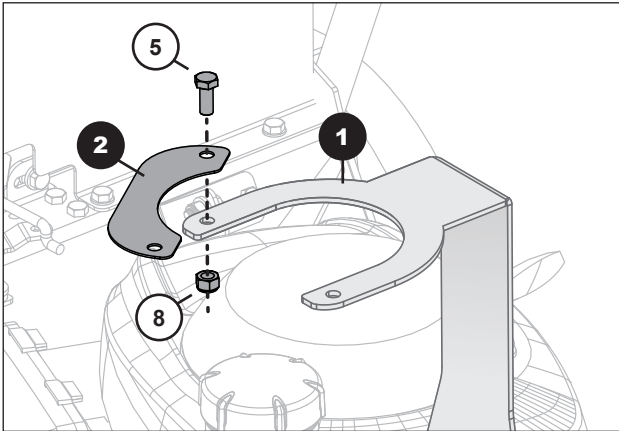
Side View / Detail:



Assembly

- Align the sprayer collar bracket (2) with the top left extension of the sprayer bracket (1) as illustrated below.

Secure with a 5/16" x 3/4" hex head bolt (5) and 5/16" nylon lock nut (8).



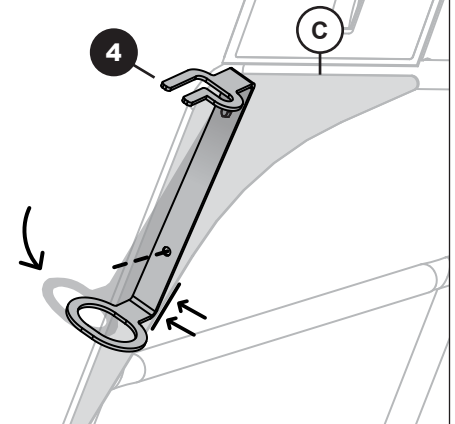
- Rotate the Wand Guide (4) until the bottom corner is flush against the edge of the spreader gusset panel (B).

Using the Wand Guide (4) as a template, drill through the remaining hole through the gusset panel (C).

NOTE: Newer ROS models will already have these holes and drilling will be unnecessary.



*IMAGE NOTE:
Miscellaneous parts excluded from this image for visual clarity.*

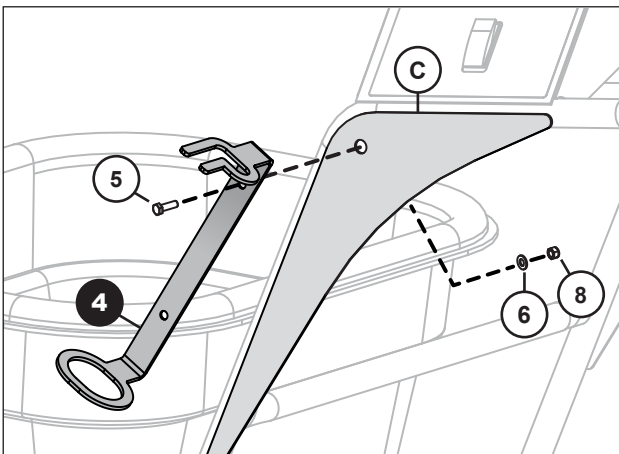


5. Drilling for the Wand Guide

On the left side of the spreader handle, find the flat, triangular gusset panel (C).

Align the top hole of the Wand Guide (4) against the existing hole on this panel. *See Illustration.*

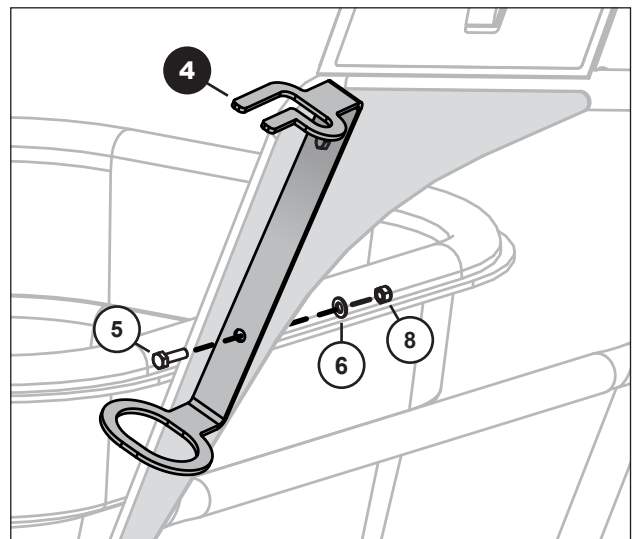
Allowing Movement: Loosely attach the Wand Guide (4) by adding a 5/16" Hex Head Bolt (5), a 5/16" Flat Washer (6) and a 5/16" Nylon Lock Nut (8).



- Insert a 5/16" Hex Head Bolt (5), as illustrated.

Secure the wand guide (4) to the spreader by adding a 5/16" Flat Washer (6) and 5/16" Nylon Lock Nut (8).

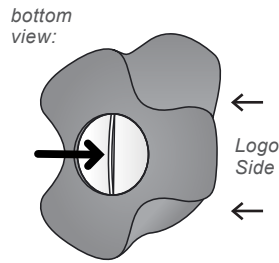
NOTE: Fully tighten the bolt added on Step 5.



Assembly / Operation

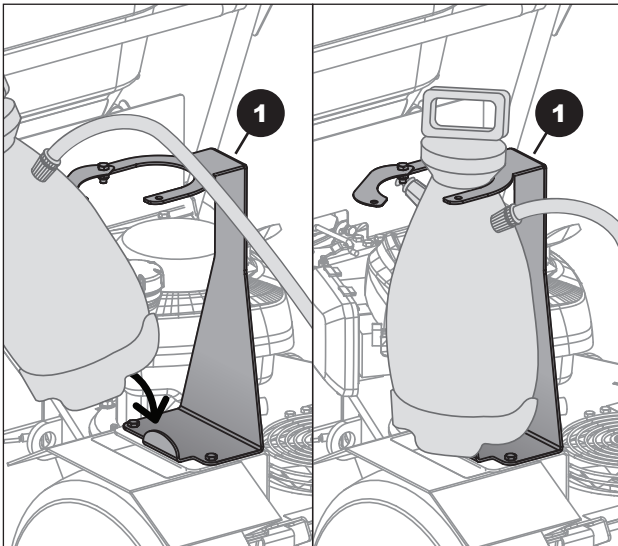
8. Attaching the Sprayer

The underside of your spot sprayer has a small tab extending from the center.

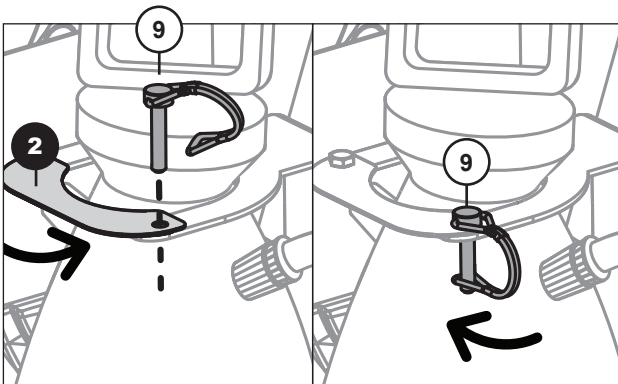


NOTE: Facing the Sprayer Logo toward the bracket will ensure the most stable fit.

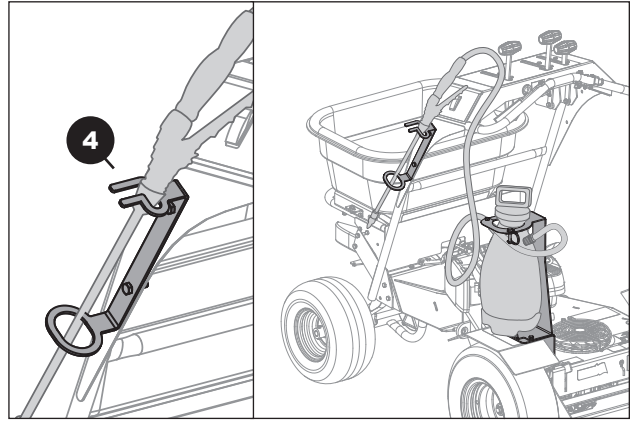
Using this tab, tilt your sprayer, hooking the tab at the base just over the lip of the newly added sprayer bracket (1) as illustrated. Then pivot the top of the sprayer into the bracket arms.



9. Rotate the collar bracket (2) to close around the sprayer neck and secure with the clevis pin (9).



10. Slide the sprayer handle into the wand guide (4).



Assembly is complete.

Operation

BEFORE OPERATING:

Read the manuals of the vehicle and sprayer.

Be thoroughly familiar with the controls and the proper use of the equipment. Know how to stop the vehicle and disengage the controls quickly.

- The spreader and sprayer are intended for use in lawn care and snow/ice melt applications only.
- Do not use for applications other than those intended by the manufacturer.
- Do not load more weight than the bracket is intended to carry. Doing so could potentially damage the spreader fender.
- Keep hands, feet, clothing, hair, and loose items away from any moving parts. Failure to check could cause personal injury.
- When sprayer is attached to vehicle, be aware that handling characteristics of vehicle may be affected. To prevent loss of control when sprayer is attached to the vehicle.



WARRANTY

1 YEAR LIMITED WARRANTY

This is warranted to the original purchaser only. Spyker will replace parts with defects in materials and workmanship, for a period of one year from the date of purchase.

Spyker Spreaders will not be liable for any loss, damage or expense including, but not limited to, consequential or incidental damages, arising from the operation, condition or use of the item. The sole and exclusive remedy against Spyker Spreaders being the replacement of the defective parts. This warranty gives you specific legal rights, and you may also have other rights which vary from state to state.

This express warranty, which is applicable only to the original purchase, is in lieu of and excludes all other warranties, whether expressed or implied by operation of law or otherwise, including any warranty of merchantability or fitness for particular purpose.

SPYKER SPREADERS
Jeffersonville, IN 47130 USA
Phone: 800.972.6130
www.spyker.com